

Invitation

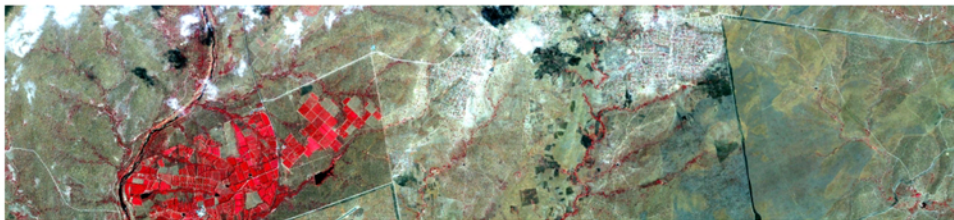
**Belgian
Earth Observation Day**

April 28, 2009

Maaseik, Belgium

BELGIAN SCIENCE POLICY





INTRODUCTION

In 2001 year, the Belgian Government launched the programme "STEREO: Support to the exploitation and research of earth observation data". Since the launch of the programme annual meetings have been organised intended as a forum where the Belgian players in the field of remote sensing could meet, present and discuss their work.

The main goal of the Belgian Earth Observation Day is to make professionals and researchers concerned by remote sensing aware of the projects realized in Belgium in the framework of the STEREO II programme and to offer the possibility for networking. An invited international speaker will open the morning session with a presentation.

STEREO II

Support to Exploitation and Research in Earth Observation

The objective of this programme is to develop an autonomous Belgian earth observation expertise of international level as a contribution to its knowledge economy. The first call for scientific proposals of the programme took place in 2006. The 14 projects selected will be presented.

Scientific research

Research focusses on following topics:

- Global monitoring of vegetation and changes in large terrestrial ecosystems
- Environmental management (water, soil, forests, agriculture, coastal areas, urban areas and suburban areas)
- Health and humanitarian aid
- Security and risk management

Three types of projects are financed: large thematic networks, smaller satellite projects and development of products and services.

Exploitation

STEREO II puts a lot of emphasis on the promotion of its scientific results and of remote sensing as a whole. The Earth Observation HelpDesk is the hub of this activity. Its website (<http://eo.belspo.be>), is both a user-friendly tool for the teams involved in the programme and an open door to the general public and international scientific community.

PRELIMINARY PROGRAMME

- 8:45 Registration
- 9:15 Conference Opening
Invited speaker
- 9:45 First session: Final results of small research projects (call 2006)
- 9:45 Mapping malaria vectors in South East Asia: combining remote sensing and ecological niche model analysis (**Obsomer V.**, Defourny P., Bogaert P., Coosemans M.)
 - 10:05 Development of a spatio-temporal segmentation algorithm for satellite time series to monitor forest condition (**Verstraeten W., Van der Zande D.**, Lhermitte S., Verbesselt J., Coppin P.)
 - 10:25 Development of a remote sensing based tool to monitor natural ecosystems in Kenya (**De Wulf R.**, Westra T., Swinnen E., Bydekerke L., Lambrechts C.)
- 10:45 Coffee break
- 11:05 The Raganello catchment: airborne imaging spectroscopy and laser scanning as an aid for archaeological research and site reconstruction (**De Laet V.**, Bertels L., Raymaekers D., Paulissen E., Van Leusen M., Knaeps E, Feiken R.)
 - 11:25 Monitoring soil organic carbon in croplands using imaging spectroscopy (**Stevens A., Denis A.**, Udelhoven T., van Wesemael B., Tychon B., Hoffmann L., Lioy R.)
 - 11:45 REmote sensing for Seasonal and Overseas Retrieval of TSM (**Knaeps E.**, Sterckx S.)
 - 12:05 Uses of DINEOF algorithm (Data Interpolation with Empirical Orthogonal Functions) for reconstruction and analysis of incomplete satellite databases over the North Sea and the Mediterranean, synthesis from the RECOLOUR project. (**Sirjacobs D.**, Alvera-Azcárate A., Barth A., Lacroix G., Park Y., Nechad B., Ruddick K., Beckers J-M.)
 - 12:15 **Presentation of the EUFAR 2009 Call (Reusen I.)**
- 12:20 Presentation of posters
- 12:50 Lunch
- 14:20 Second session: Mid-term results of large thematic projects
- 14:20 Optical remote sensing of marine and inland waters (**Ruddick K.**, Astoreca R., Borges A., Brando V., Dekker A., Delille A., Doxaran D., Knaeps E., Lahet F., Lancelot C., Nechad B., Neukermans G., Park Y., Rousseau V., Sterckx S.)
 - 14:40 Monitoring top soil moisture through remote sensing to aid hydrologic modelling (**Verhoest N., Lievens H.**, Hoffmann L., Matgen P., Montanari M., Vanclooster M., Lambot S., Minet J., De Baets B., Vernieuwe H., De Keyser E., Pauwels V., Plaza D.)
 - 15:00 Measuring and modelling urban dynamics for the Greater Dublin Area (**Van de Voorde T.**, van der Kwast J.)
- 15:20 Coffee break
- 15:50 HABISTAT: A classification framework for HABitAt STATus reporting with remote sensing methods (**Haest B.**, Delalieux S., Paelinckx D., Vanden Borre J., Cheung-Wai Chan J., Ma J., Scheunders P., Thoonen G., Schmidt A., Kooistra L.)
 - 16:10 Integrating remote sensing data in an agent-based model applied to spatial epidemiology (**Dion E.**, Vanhuysse S., Lambin E., Wolff E.)
 - 16:30 Agriculture monitoring by multi-sensors observations and crop growth modeling in Europe, China and Ethiopia. (**Defourny P.**, Piccard I., Tychon B., Meulenberghs F.)
- 16:50 Presentation of award for best presentation
- 16:55 Closure of the workshop

GENERAL INFORMATION

Location of the venue

The meeting will take place in the Castle Wurfeld, Kapelweg 6, 3680 Maaseik. The castle is located in enclosed grounds near the city of Maaseik in a rural setting.



How to get there

By car:

Follow the E314 motorway and take exit 32 (for Genk Oost) in the direction of Maaseik.

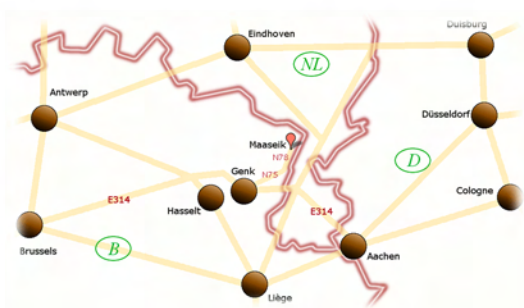
Follow the N75 in the direction of Maaseik.

Keep following this road until you get to a T-junction with the N78. At the traffic lights, turn left.

Pass the villages of Dilsen, Rotem and Elen. Leave the N78 where it goes sharply right and carry straight on.

Take the first road on the left (Wurfeldermolenweg). Continue following it until you reach a Y-junction.

The Castle is straight ahead.



By public transportation:

Take the train until the station of Hasselt. There, a shuttle service will be available.

You can register for this shuttle service via our online web form (see below).

REGISTRATION

Participants must register **before April 22nd** as the number of participants is limited.

Participation is free of charge.

You can register through our online registration form: <http://eo.belspo.be/ExpertZone>

For more information, please contact:

Chantal Oudaert
Belgian Science Policy Office
Wetenschapsstraat 8 rue de la Science
1000 Brussels
Tel: +32 2 23 83 410 - e-mail: maaseik@belspo.be

Participants wanting to stay overnight can book a room at the Castle.