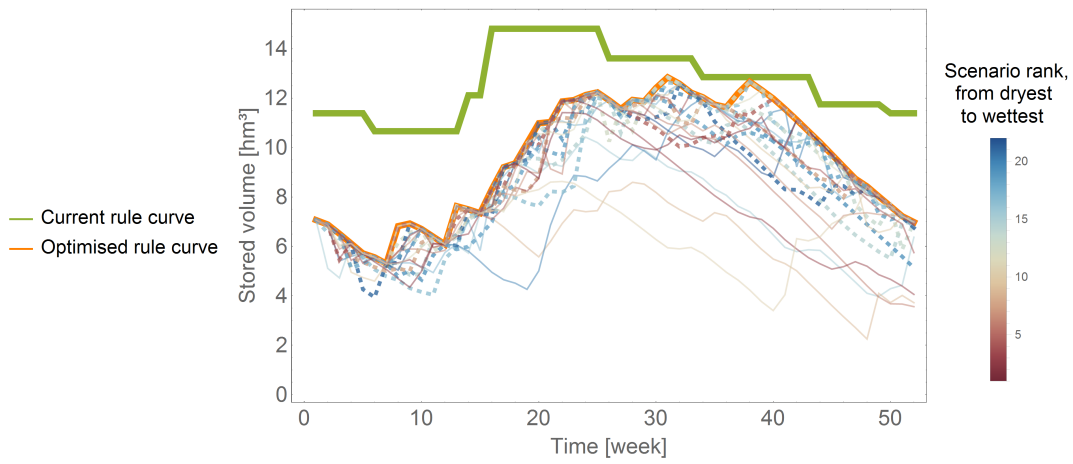
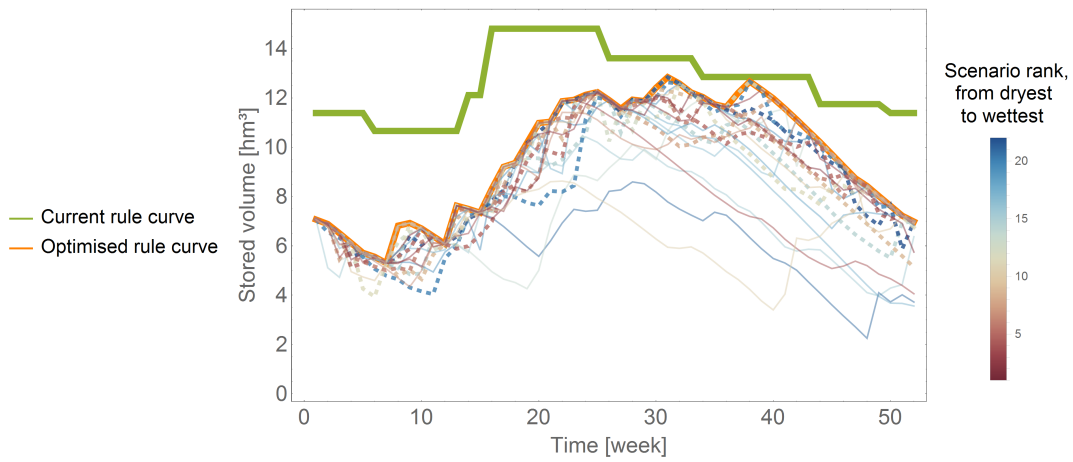


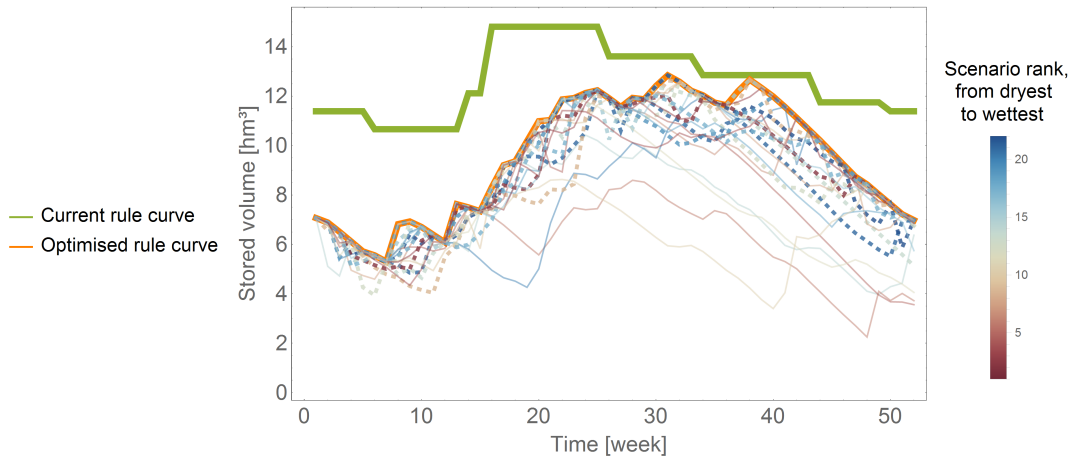
Online resource 4



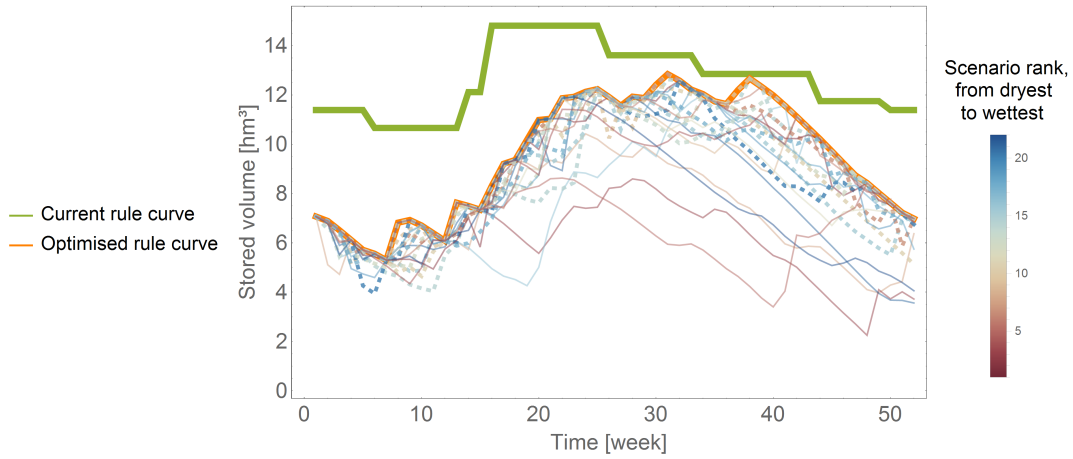
(a) The colours correspond to the average discharge during *the driest three-month period*.



(b) The colours correspond to the average discharge during *the driest six-month period*.



(c) The colours correspond to the average discharge during *the dry season* (May-September).



(d) The colours correspond to the average discharge during *the wet season* (October-April).

Figure A3: Impact of the scenarios on the solution for a stochastic solver (here, merging is depicted, without MPC). The optimisation curves (i.e. the result of the optimisation and the scenarios) correspond to a 2-year scenario; each of them is plotted against the original rule curve for the first year. The colour scales are relative: dark blue indicates the wettest scenario, dark-red the driest scenario. A dashed line indicates a support scenario.

These figures provide supplementary analysis with respect to the main text. More precisely, they complement Figures 6a and 6b.