

Joint programme : a tool in cooperation for development

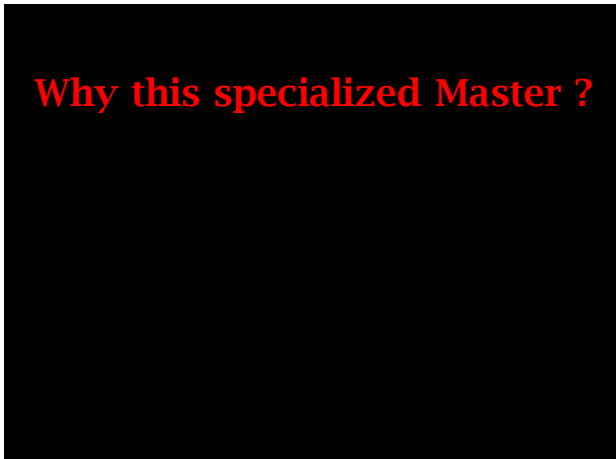
The example of the specialized Master in Risk and Disaster Management

Pierre Ozer

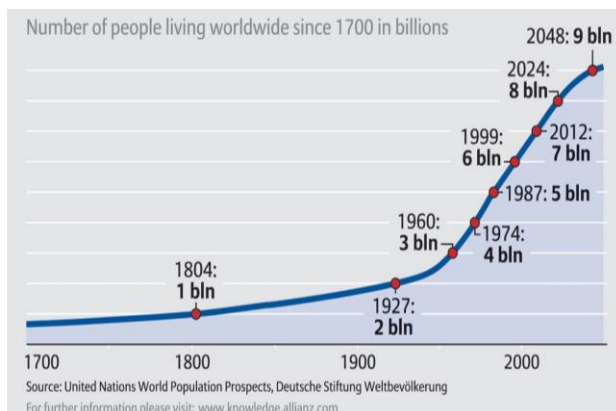


The Hugo Observatory
Environment, Migration, Politics

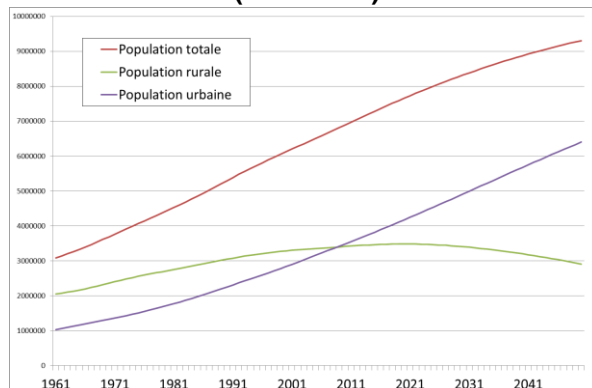
ERASMUS Staff Training in Liège, Université de Liège, 8-12 May 2017



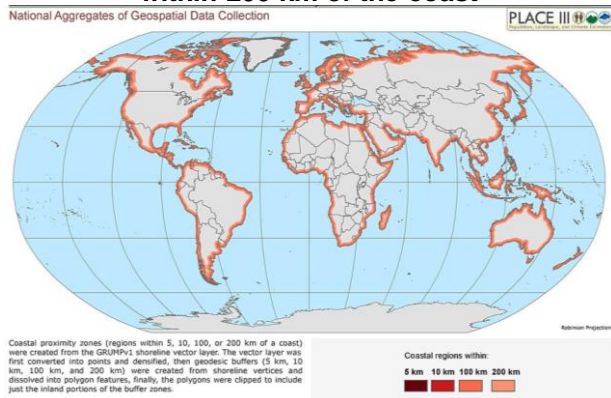
Human population of the Earth



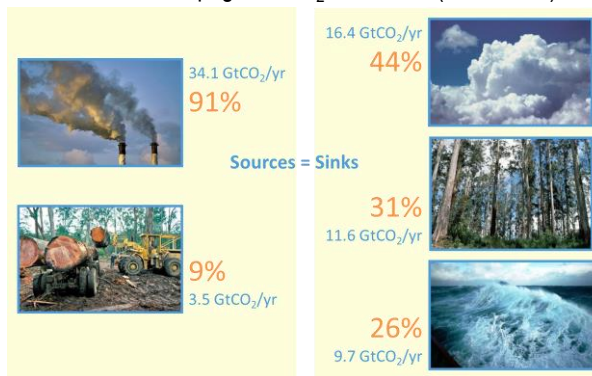
World population (1961-2015) and projections (2016-2050)



48% of the world population lives within 200 km of the coast

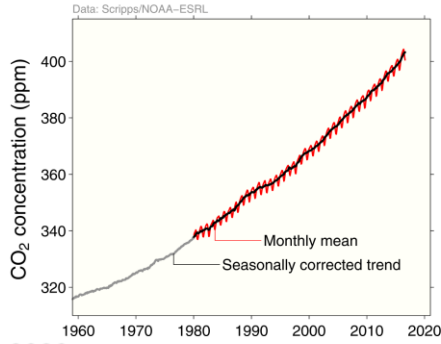


Fate of anthropogenic CO₂ emissions (2006-2015)

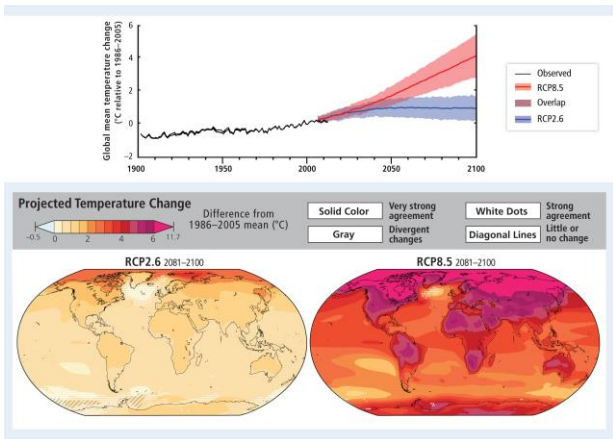
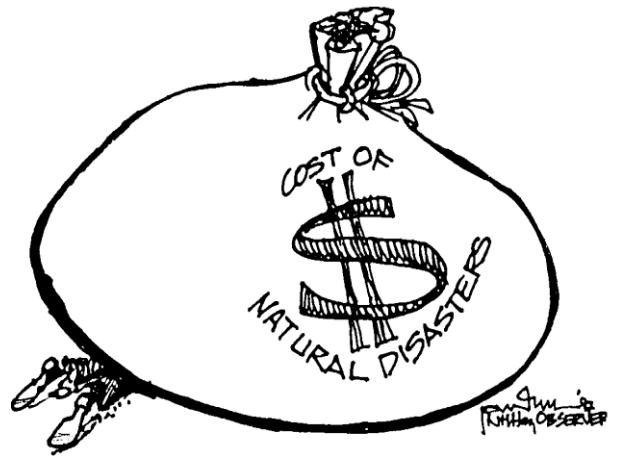
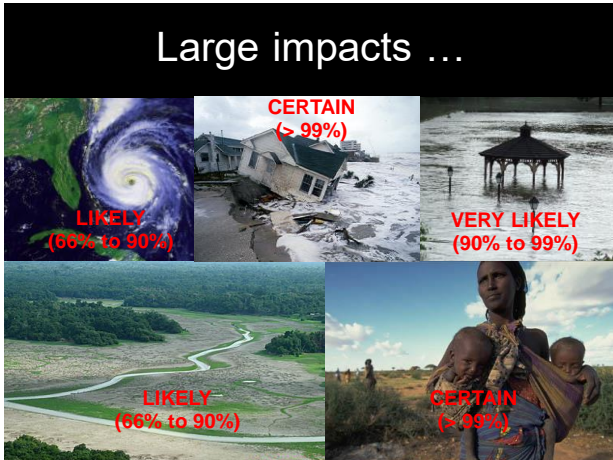
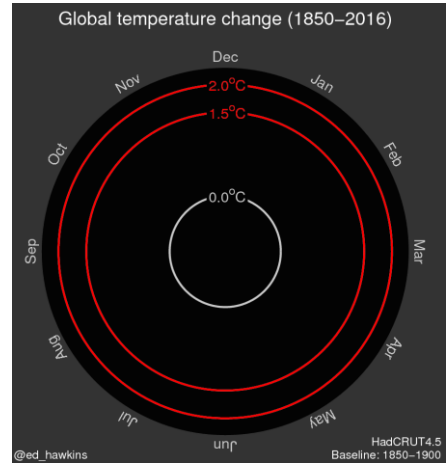


Global Carbon Project 2016

Atmospheric concentration



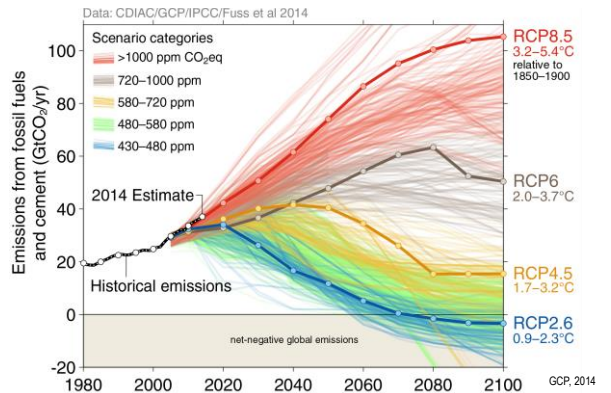
Global Carbon Project 2016



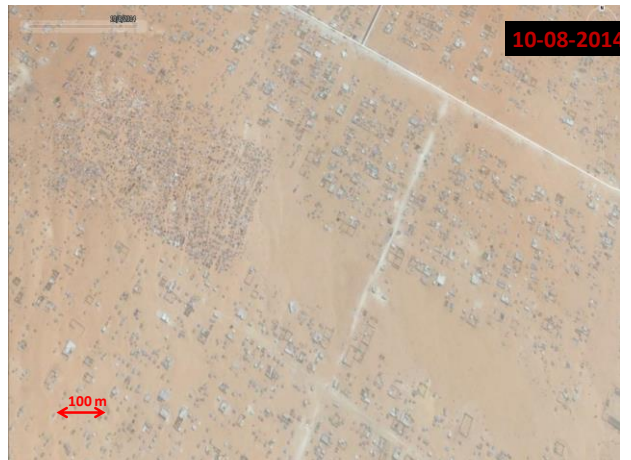
Source: AR5 WGII GIEC 2014

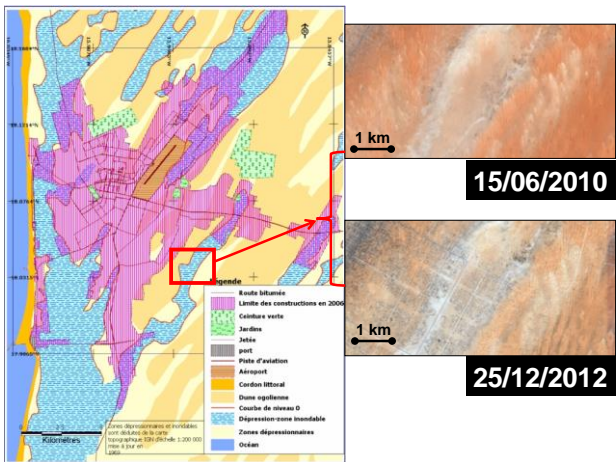
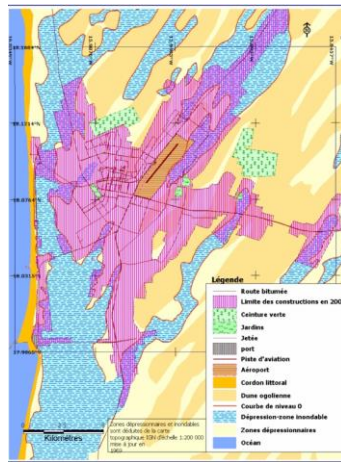
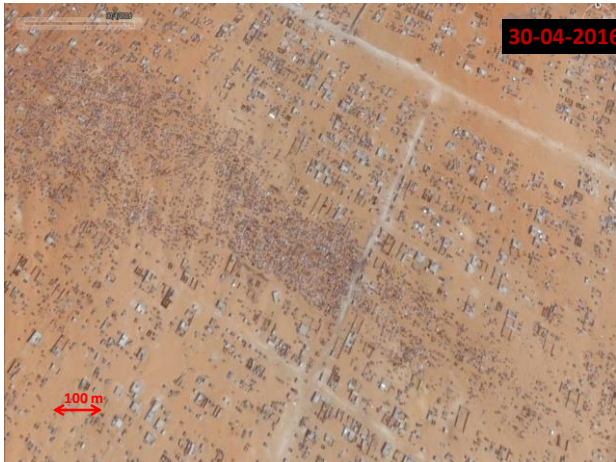
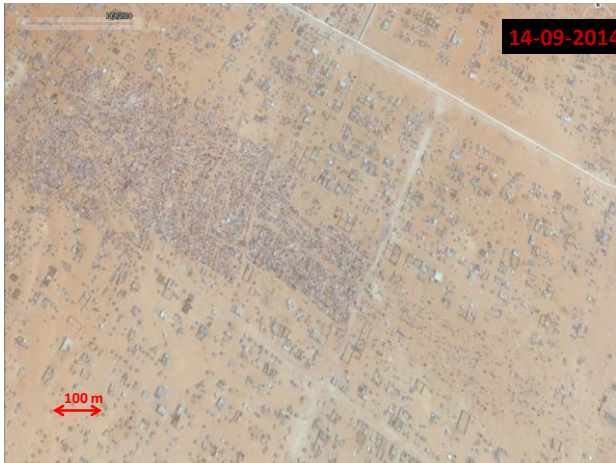
Fossil fuel CO₂ emissions vs IPCC scenarios

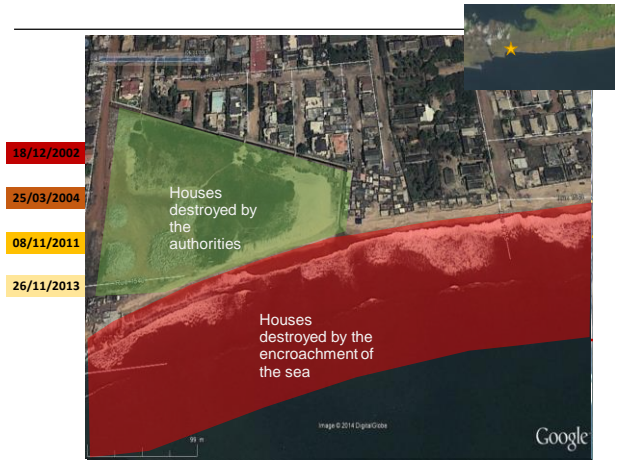
Emissions are heading to a 3.2-5.4°C "likely" increase in temperature



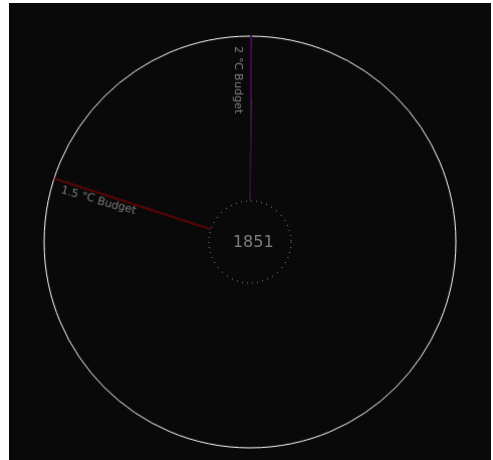
During this time...





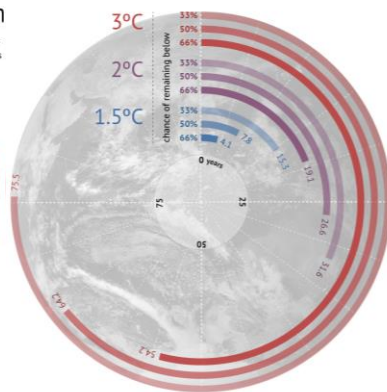


At the end...



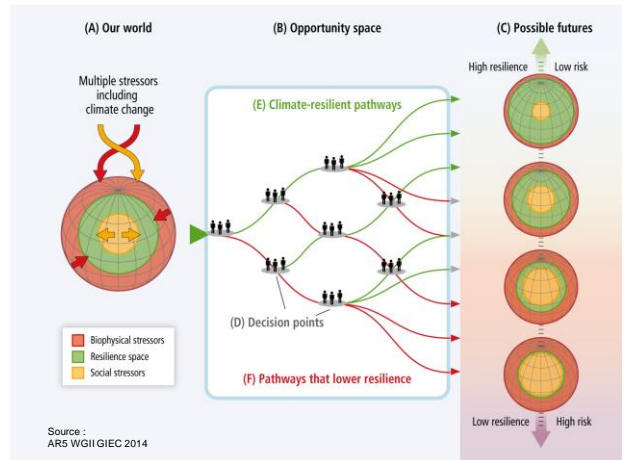
Carbon Countdown

How many years of current emissions would use up the IPCC's carbon budgets for different levels of warming?



CarbonBrief

Photo credit: Nicky Goldford/Space Weather Center
Diagram credit: T. Don Williams/CarbonBrief



Source: ARS WGII GIEC 2014

About this specialized Master in Risk and Disaster Management



Created in 2000

270 students from 20 different countries

Currently with Université catholique de Louvain

Long-term hub for the creation of new expertise in Belgium, Europe and abroad :

- students
- PhD's
- research programmes
- education programmes and tools
- together with NGOs, public administrations and international organisations

Cycle view of the study programme

	BI	Q1	Q2	TA	Pr	OK	Gr
Compulsory courses (BI : 60Cr)							
STFE2002-1 Final work - COLLEGIALITE	BI	TA	-	-	-	-	15
Multidisciplinary teaching related to natural hazards and disasters							
RISQ2014-1 Introduction to risks and disasters - Sébastien BAUNET, Pierre OZER, Nathalie SCHOFFINO	BI	Q1	36	-	-	-	3
RISQ2015-1 Natural risks and disasters - Alain DASSARQUES, Benjamin DERWALS, Hans-Balder HAVENITH, Aurelia HUBERT, Pierre OZER - [40 FW]	BI	TA	48	-	-	-	[+] 6
RISQ2016-1 Technical / technological risks and disasters - Jean-François DEMONCEAU, Benjamin DERWALS	BI	Q1	24	-	-	-	2
RISQ2017-1 Sanitary risks and disasters - N...	BI	Q2	24	-	-	-	2
<i>Notice : South Chair expert</i>							
Analytical, preventative and risk and emergency management tools.							
RISQ2018-1 Roles of geographic information systems and geomatics techniques in risks and disasters management - Robert BILLON, Pierre HALLOT	BI	Q1	24	36	-	-	5
RISQ2019-1 Early warning system - Bakary Diaw, Bernard TROCK	BI	Q1	24	24	-	-	4
RISQ2020-1 Land planning and risk and disaster prevention - Pierre OZER - [20 FW]	BI	Q2	8	-	-	-	[+] 2
RISQ2021-1 Education, awareness, communication, perception - Marianne VON FRIENCKELL	BI	Q2	24	-	-	-	2
Disaster management : from emergency to resilience							
RISQ2022-1 Public action theory and case study on emergency and crisis planning in Belgium - Nathalie SCHOFFINO	BI	Q1	-	30	-	-	5
RISQ2023-1 Emergency and crisis planning in developing countries - Pierre OZER, Nicolas TUTT, Sébastien VAN BELLEGHEM	BI	Q2	-	60	-	-	4
<i>Notice : Exercise of simulation on the premises of the Civil protection / B-FAST in Crisnée.</i>							
RISQ2024-1 Crisis communication, media and social networks - Catherine FALLON, Marc MÈLOU, Sandrine ROGZINSKY, Marc WIERSE	BI	Q1	12	24	-	-	3
RISQ2025-1 Migration and displaced persons - François GENÈRE	BI	Q2	24	-	-	-	2
RISQ2026-1 Governance, resilience and adaptation - Dominique PERREN, Gautier PASCOTTE - [1d FW]	BI	Q2	24	-	-	-	[+] 3
RISQ2027-1 Feedback - Pierre OZER - [16h SEM, 1d FW]	BI	TA	-	-	-	-	[+] 2



The Hugo Observatory

Environment, Migration, Politics

[HOME PAGE](#)
[ABOUT](#)
[PROJECTS](#)
[PUBLICATIONS](#)
[COURSES](#)
[EVENTS](#)
[STUDENTS](#)
[JOIN US](#)

Courses

Migration and displaced persons

By François Genère

Risk management and health

By Sébastien Baunet and others

- Part 1: Introduction to risk management
- Part 2: Monological risks

Theory and concepts of crisis management and emergency planning

By Nathalie Schoffino and others

Topics covered:

- Introduction to concepts
- The tasks of a state employee in charge of emergency planning through the risk cycle
- Planning philosophy
- Plans theory and methodology
- Exercises: methodological elements
- Natural, technological and industrial risks

Introduction to natural hazards

By Pierre Ozer

Natural hazards threatening the earth: an introduction to what they are and how they can be reduced.

The Hugo Observatory

Environment, Migration, Politics

[HOME PAGE](#)
[ABOUT](#)
[PROJECTS](#)
[PUBLICATIONS](#)
[COURSES](#)
[EVENTS](#)
[STUDENTS](#)
[JOIN US](#)

Local Correspondents

Maxine Burkett

Professor of Law at the William E. Richardson School of Law, University of Hawai'i

Amina Said Chire

Geographer, researcher and lecturer at the University of Djibouti

Olivia Dun

Postdoctoral Fellow in the School of Geography, University of Melbourne, Australia

Apollinaire Essémirivo Chokpon

PhD Candidate at the University of Liège (Belgium) and the University of Akron (Ohio), Beem

Associate Members

Richard Betts

Chair in Climate Impacts at the University of Exeter, UK and Head of Climate Impacts in the Met Office Hadley Centre



Julia Blocher

Research Officer at the United Nations University Office in the United States in New York



Jan Borras

Professor of Agrarian Studies at the International Institute of Social Studies (IISD) of Erasmus University Rotterdam



Mikael Carnota

Associate professor at the Faculty of International Relations at the University of Economics of Bratislava



Pierre Ozer
pozer@ulg.ac.be
<http://labos.ulg.ac.be/hugo>

