

RESEARCH ARTICLE

Structural models of the different trimers present in the core of phycobilisomes from *Gracilaria chilensis* based on crystal structures and sequences

Jorge Dagnino-Leone¹✉, Maximiliano Figueroa¹✉, Claudia Mella¹, María Alejandra Vorpal¹, Frédéric Kerff², Aleikar José Vásquez¹, Marta Bunster^{1*}, José Martínez-Oyanedel^{1*}

1 Departamento de Bioquímica y Biología Molecular, Facultad de Ciencias Biológicas, Universidad de Concepción, Concepción, Chile, **2** Centre d'Ingénierie des Protéines, Université de Liège, Liège, Belgium

✉ These authors contributed equally to this work.

* mbunster@udec.cl (MB); jmartine@udec.cl (JMO)



OPEN ACCESS

Citation: Dagnino-Leone J, Figueroa M, Mella C, Vorpal MA, Kerff F, Vásquez AJ, et al. (2017) Structural models of the different trimers present in the core of phycobilisomes from *Gracilaria chilensis* based on crystal structures and sequences. PLoS ONE 12(5): e0177540. <https://doi.org/10.1371/journal.pone.0177540>

Editor: Jiajie Diao, University of Illinois at Urbana-Champaign, UNITED STATES

Received: February 2, 2017

Accepted: April 28, 2017

Published: May 18, 2017

Copyright: © 2017 Dagnino-Leone et al. This is an open access article distributed under the terms of the [Creative Commons Attribution License](https://creativecommons.org/licenses/by/4.0/), which permits unrestricted use, distribution, and reproduction in any medium, provided the original author and source are credited.

Data Availability Statement: All protein structure files are available from the PDB database (accession code 5TJF).

Funding: This work was supported by FONDECYT 113.0256 grant to MB, FONDECYT Doctoral grant 21120260 to JDL, CONICYT scholarship to JDL and CR_Lab Biofísica Molecular 2015-2016. The funders had no role in study design, data collection and analysis, decision to publish, or preparation of the manuscript.

Abstract

Phycobilisomes (PBS) are accessory light harvesting protein complexes that directionally transfer energy towards photosystems. Phycobilisomes are organized in a central core and rods radiating from it. Components of phycobilisomes in *Gracilaria chilensis* (*Gch*) are Phycobiliproteins (PBPs), Phycoerythrin (PE), and Phycocyanin (PC) in the rods, while Allophycocyanin (APC) is found in the core, and linker proteins (L). The function of such complexes depends on the structure of each component and their interaction. The core of PBS from cyanobacteria is mainly composed by cylinders of trimers of α and β subunits forming heterodimers of Allophycocyanin, and other components of the core including subunits α^{II} and β^{18} . As for the linkers, Linker core (L_C) and Linker core membrane (L_{CM}) are essential for the final emission towards photoreaction centers. Since we have previously focused our studies on the rods of the PBS, in the present article we investigated the components of the core in the phycobilisome from the eukaryotic algae, *Gracilaria chilensis* and their organization into trimers. Transmission electron microscopy provided the information for a three cylinders core, while the three dimensional structure of Allophycocyanin purified from *Gch* was determined by X-ray diffraction method and the biological unit was determined as a trimer by size exclusion chromatography. The protein sequences of all the components of the core were obtained by sequencing the corresponding genes and their expression confirmed by transcriptomic analysis. These subunits have seldom been reported in red algae, but not in *Gracilaria chilensis*. The subunits not present in the crystallographic structure were modeled to build the different composition of trimers. This article proposes structural models for the different types of trimers present in the core of phycobilisomes of *Gch* as a first step towards the final model for energy transfer in this system.

Competing interests: The authors have declared that no competing interests exist.

Introduction

Aquatic organisms, such as cyanobacteria, eukaryotic red alga and cryptophyta, present accessory light harvesting protein complexes called phycobilisomes (PBS) [1]. The structure of PBS allows the energy to be transferred directionally to photosystem II (PSII), thus improving the use of the 400-650nm range of wavelengths. Phycobilisomes are organized in a central core and rods radiating from it. Components of phycobilisomes in *Gracilaria chilensis* are Phycobiliproteins (PBP): Phycoerythrin (PE), and Phycocyanin (PC) in the rods, Allophycocyanin (APC) is found in the core, and linker proteins (L) present along the whole system. PBPs are chromophorylated proteins that share a general architecture. They are organized as heterodimers ($\alpha\beta$), which assembly themselves into trimers or hexamers. The subunits of PBPs are mono or multi chromophorylated with linear tetrapyrroles covalently bound to cysteine residues. Efficient energy transfer is achieved through a combination of position and geometry of the chromophores and the protein environment [1–3]. In the present article, we focused on the principal component of the phycobilisomes' core, the phycobiliprotein Allophycocyanin or APC. The Allophycocyanin is organized as cylinders, and different numbers of these cylinders have been reported for the core of PBS including bicylindrics, tricylindrics and pentacylindrics, being the tricylindric the most common in cyanobacteria and red alga [4–6]. The tricylindrical core has been proposed to be formed by a foundation of two cylinders associated to membrane and a third cylinder is located at the top of the base forming a pyramid [7]. Four subunits have been identified for APC in the core: α , β , α^{II} and β^{18} , which are codified by *apcA*, *apcB*, *apcD* and *apcF* genes, respectively [8]. Studies reported on *Synechococcus* show that subunits α^{II} and β^{18} are expressed in minor quantities, which make difficult to study the expressed proteins in native conditions [9,10]. Indeed, studies of the same nature in eukaryotic red alga are still missing.

Besides PBPs, the two linkers Core (L_C) and core-membrane (L_{CM}) have been identified in the core [1]. The L_C of 7.8 kDa is codified by the *apcC* gene. This linker is associated to APC trimers in cylinders, suggesting a specific role on stability and energy transfer [9,11–13]. The structure of L_C has been determined by X-ray diffraction as a complex with APC trimer in *Mastigocladus laminosus* (PDB ID: 1B33) [14]. The L_{CM} , codified by the *apcE* gene, in a tricylindrical core is a 90kDa chromophorylated linker protein that has been proposed as the final acceptor of the light harvested by the PBS, besides its role in the anchoring of the PBS to the photosynthetic membrane [9,12,13,15,16]. Different domains have been identified in the linker core-membrane; for example, the N-terminal region, called PB domain, is homologous to PBP alpha subunits, and shows 30% similarity with α subunit of APC, and also contains a phycocyanobilin chromophore. This PB domain presents an insertion of 50 residues (PB loop). The PB loop in cyanobacteria has been associated to fluorescence quenching by its interaction with the orange carotenoid protein (OCP) [17], which has not been detected in eukaryotic alga. Zhao and his group [15] produced a recombinant chromophorylated PB domain in absence of lyases, a fact that induced the authors to propose an autocatalytic binding of phycocyanobilin to L_{CM} . Due to their similarity, the PB domain can replace the α subunit and form a $PB\beta$ heterodimer, which can associate itself to other $\alpha\beta$ heterodimers to form a trimer.

Different trimers composition present in a tricylindrical core have been reported for *Synechocystis* [18] APC ($\alpha_3\beta_3$), APC_1 ($\alpha\alpha_3\beta_3L_C$), APC_2 ($\alpha_2\alpha^{\text{II}}\beta_3L_C$) and APC_3 ($\alpha_2PB\beta_2\beta^{18}$). Watanabe and Ikiushi [19], in an interesting review proposed also a model for the position of each type of trimer in the three cylinders core, which in *Gracilaria chilensis* has not been assessed yet.

Gracilaria chilensis (Rhodophyta, Gigartinales) (*G.ch*) [20] is one of the economically important red macroalga in the South Pacific. Our research on the structure and function of

the PBS in this algae has been focused on understanding how the organization, *i.e.* composition, structure or component interactions of the PBS provides the frame for the high efficiency of the energy transfer towards PSII. Until now, the structure of PE and PC from *Gch* has been reported previously by our group [21,22], as well as information about interaction between hexamers in a rod and its role in the function of energy transfer [23]. In this article, we report i) the three cylinders nature of the core of the PBS in *Gch*, ii) the sequences of the subunits components of the core, iii) the sequence analysis and iv) the X-ray structure for Allophycocyanin from *Gch* ($\alpha\beta$)₃. This structure was used to model the rest of the subunits, which may also form a functional Allophycocyanin, and thereby to build the trimers proposed for the core in cyanobacteria, as our first approach to the analysis of the contribution of both the subunits in the core and L_C to the energy transfer pathways in an eukaryotic red alga.

Material and methods

Purification of phycobilisomes

PBS were purified using the condition presented in [S1 File](#), from 200g of intertidal *G.ch* collected at Coliumo Bay (36° 32'S, 072° 56' W). The fraction containing complete PBS was identified by its spectroscopic properties (emission at 660nm after excitation at 566nm) and was used for Electron Microscopy.

Electron microscopy: The micrographs were obtained in a Philips Tecnai 12 Bio Twin EM (120kv) at the Pontificia Universidad Católica de Chile facility, using the methodology described [23] for complete phycobilisomes.

The sequences of the subunits

Primers design. The primers were designed by sequence alignment of the genes reported in literature, using the sequences displayed on [S2 File](#). The primers were designed manually considering the conserved sequences, the %GC, T_m and the size of the oligonucleotides. The design was verified with Oligonucleotide PrimerCheck (<http://depts.washington.edu/bakerpg/primertemp/primermelttemp.html>) and synthesized by IDT. The primers used were:

α subunit Sense: 5' atgagtattattactaaatcaatcgtaaagctgatgcagaagctcgg
3'

Antisense: 3' ttactgcattgcacctaataatgataatcaaaataaaatcct 5'

β subunit

Sense: 5' atgcaagatgctattacttctgtaattaatgcagctgatgtacaagg 3'

Antisense: 3' cttagcttaaacagaaacaaatataatcaaaatataactccc5'

α^{II} subunit

Sense: 5' atgagcttagttagccaaattatttttaaatgcagataatgaattaagat 3'

Antisense: 3' ttatgacataccttgattataaaatcaaagtagggttct 5'

β^{18}

Sense: 5' atgcaagacgctattactacaatttttaaatcgatatgatttaacaggaaa 3'

Antisense: 3' ttagatatcttcttcgcttaagtttttaattatattgaaatggttcaa
5'

Sequencing of the genes codifying for the subunits of Allophycocyanin. RNA was extracted from 0.1g of fresh washed and frozen alga, ground in a mortar with TRI-Reagent (Molecular Research Center) using the protocol recommended by the supplier. cDNA was obtained using Reverse Transcriptase RevertAidTM kit (Fermentas) according to recommendations of suppliers. The cDNA was used for the amplification assays by PCR according to [S3 File](#). The sequences translated to proteins were used for the resolution of the 3D structure of Allophycocyanin and for the molecular modeling of the subunits α^{II} and β^{18} .

The sequence of the linkers associated to the CORE. The PB domain of the L_{CM} :Primers were designed according to the sequences reported for L_{CM} of the red algae *Chondrus crispus* [24] and *Gracilaria tenuistipitata* [25]. The sequencing and the amplification methodology were similar to the methodology described above for α and β subunits of APC.

The L_C : The sequence of the Linker core of *Gracilaria chilensis* was obtained from a direct analysis of the transcriptome (AN: SRX1507975) [26].

Purification of Allophycocyanin

APC was obtained as reported in [S4 File](#). The pure protein was characterized by its spectroscopic properties of absorption ($\lambda_{max}^A = 651\text{nm}$) and emission ($\lambda_{max}^E = 660\text{nm}$) and the relationship A_{651}/A_{280} as purity index. This sample was used for the determination of the oligomerization state of Allophycocyanin, the spectroscopic studies and for crystallization.

Determination of the oligomerization state

50 μL of 1 mg/mL of purified APC was separated in a Superdex200 HR/30 column (Amersham Biosciences), equilibrated with 5mM phosphate buffer pH7, and associated to a Merck-Hitachi FPLC with a flux of 0.5ml/min provided by a L6210 Intelligent Pump with a L-4250 UV-Vis Detector. For the calibration, BioRad standards were used. The elution of the proteins was followed at 651 and 280nm.

Protein crystallization

A general screening was performed in the robotic unit at Universidad de Chile. The final crystallization conditions were 2mg/mL protein concentration, 300mM NaCl, 20% v/v PEG 6000, and 100mM MES pH7.

Determination of the three dimensional structure of APC

Crystals were diffracted at Soleil Synchrotron up to 2.3 Å resolution. The phases were obtained by molecular replacement using the data of 1KN1 [27] and the software Phenix [28]. The final model was built in Coot [29] and refined by Phenix Refine [30].

Molecular models for the different trimers present in the core

The trimer for APC was obtained by crystallographic symmetry (P321). The different subunits were modeled with Modeller v 9.1 [31]. The templates were the α subunit of APC from the structure reported here (PDB ID: 5TJF), the PB domain in 4XXI [32], and the β subunit of 5TJF for α^{II} , PB domain and β^{18} , respectively. Trimers APC_1, APC_2, APC_3 were built by substitution of the corresponding subunits followed by a molecular dynamics protocol for steric rearrangement of residues. L_C was modelled also with Modeller using the chain O of the reported structure for *Mastigocladus laminosus* (PDB ID: 1B33) [14] as template, and a docking procedure was performed between the L_C and $(\alpha\beta)_3$ or $(\alpha^{\text{II}}\alpha_2\beta_3)$ using ClusPro [33] without restrictions. Each final model was evaluated with PROSA [34] and RAMPAGE [35].

Results and discussion

The phycobilisome's core of *G. chilensis* is tricylindrical

The PBS enriched fractions were analyzed by electron microscopy. The absorption spectrum ([Fig 1A](#)) showed the assembly of the PBS. Upon excitation at 566nm corresponding to the absorption maximum of PE (Phycocerythrin). The only emission corresponded to the emission

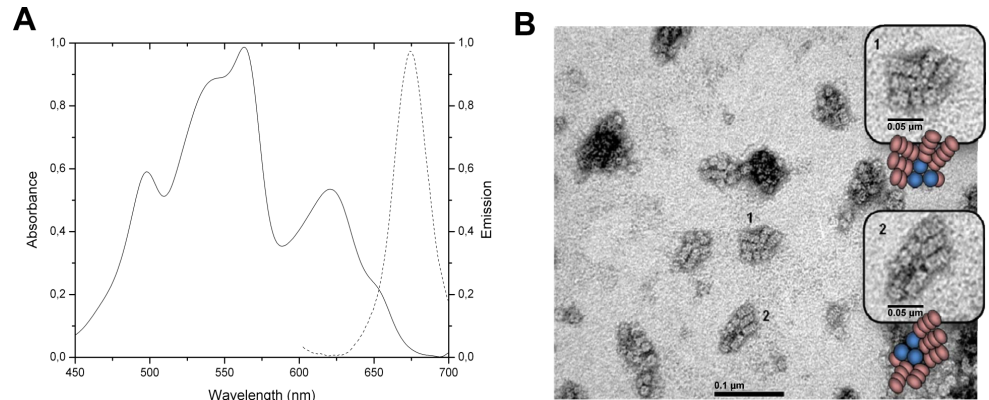


Fig 1. Characterization of phycobilisomes of *Gracilaria chilensis*. A) Absorption(-) and emission(..) spectra. B) Transmission electron micrograph of purified phycobilisomes. The inserts show amplified images. Schematic drawings of PBS are also shown.

<https://doi.org/10.1371/journal.pone.0177540.g001>

of APC, which means that the assembly was intact. Moreover, the energy has been transferred through the complex to emit at 660nm. The micrograph (TEM) for the PBS is shown in Fig 1B. The image clearly showed three cylinders core of phycobilisomes, which are compatible with the presence of 90kDa L_{CM} , and 5–6 rods formed by the piling of 3–4 hexamers. This is the first time that a photomicrograph of a phycobilisome of *Gracilaria chilensis* is reported, and at least in shape and organization resembles the PBS from prokaryotes [2].

Allophycocyanin is mainly present as trimer $(\alpha\beta)_3$, despite the transcription of other subunits

The absorption and emission spectra of the purified samples of Allophycocyanin are shown in Fig 2A. This sample was used to determine the oligomerization state using size exclusion chromatography (Fig 2B).

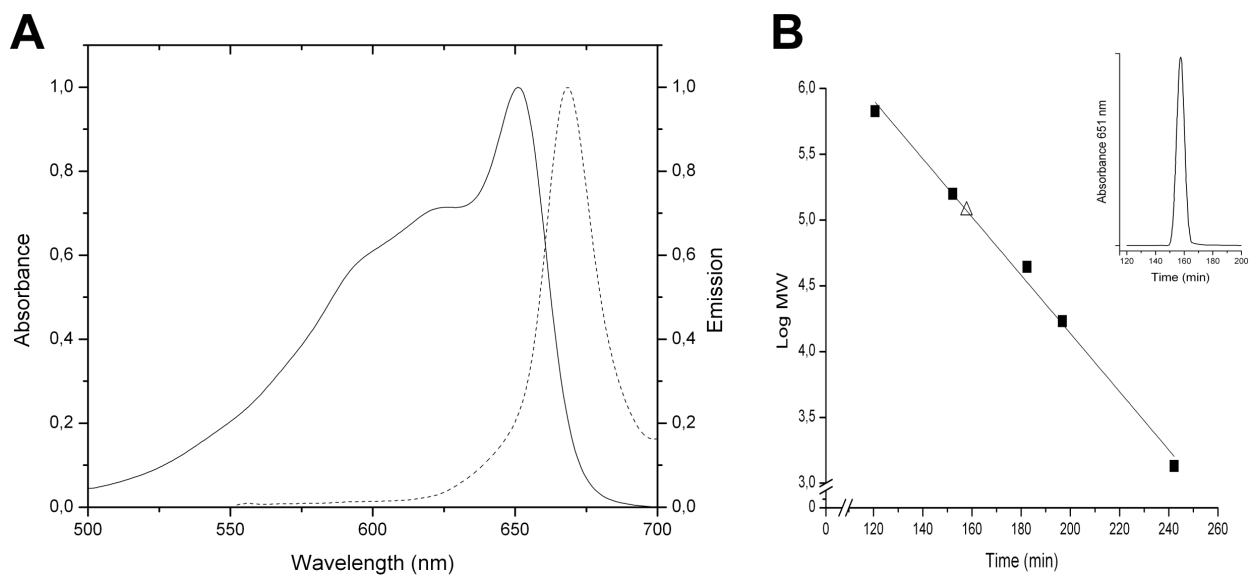


Fig 2. Spectroscopic characterization and oligomerization state of Allophycocyanin. A) Absorption (-) and emission (–) spectra of purified Allophycocyanin. B) Molecular sieve chromatogram; the standards and the sample are indicated.

<https://doi.org/10.1371/journal.pone.0177540.g002>

The result showed that Allophycocyanin from *Gracilaria chilensis* was purified in an oligomeric state $(\alpha\beta)_3$. The purified APC was shown to contain only α and β subunits by mass spectrometry experiments. Studies reported in *Synechocystis* [19] and our results from the sequencing of the genes of the phycobiliproteins in the core of *Gracilaria chilensis*, revealed that they also contain α^{II} and β^{18} , which are not present in the Allophycocyanin purified. Therefore, in this article the sequences of these two additional subunits are also reported (Fig 3). The sequences for *apcA*, *apcB*, *apcD* and *apcF* genes (corresponding to α , β , α^{II} and β^{18} subunits, respectively) are shown in S5 File. Fig 3 shows the amino acid sequence of the α and β subunits corresponding to the *apcA* and *apcB* genes, respectively, and comparison with sequences of their homologous subunits α^{II} and β^{18} (genes *apcD* and *apcF*, respectively). The sequence of the PB domain and the L_C used for this work are also displayed. These sequences were confirmed by transcriptomics analysis [26].

The analysis of the sequences showed that α and α^{II} subunits have 161 residues. They shared 41% identity and the position of the cysteines is conserved (Cys81) in both molecules. β and β^{18} subunits have 161 and 169 residues, respectively. They share 43% identity and the position of cysteines are also conserved (81 and 82, respectively). The sequence of α subunit and the fragment of the linker core-membrane used for modeling (PB domain) shared 22% identity (Fig 3), with an insertion of 55 amino acids in the PB domain. Cys81 in α subunit is replaced by Ser153 in the sequence alignment, but the chromophore is bound to Cys191 in the sequence of PB domain according to the reported recombinant structure reported (PDB ID: 4XXI) [32].

The X-ray structure of Allophycocyanin from *G. chilensis* showed a high structural conservation

The purified APC was used for crystallization experiments. The statistics and the refinement data are shown in Table 1. The coordinates have been deposited at the Protein Data Bank under the accession code 5TJF.

The crystal structure of Allophycocyanin from *G. chilensis* was determined in the space group P321 with one heterodimer $\alpha\beta$ per asymmetric unit using molecular replacement. The final structure was refined to 2.3Å resolution with a final R-work and R-free of 25.7 and 28.69 respectively (Table 1). The resolution allowed the chromophores to be clearly defined in the electron density map ($|2F_o - F_c|$) (Fig 4B).

The structure of the $(\alpha\beta)$ heterodimer is shown in Fig 4A. Indeed, α and β subunits contained one phycocyanobilin bound to cysteine 81 and are stabilized by Asn71, Arg83 and Asp84 in α subunit, and by methyl-Asn71 (Asm71) and Asp84 in β subunit. The biological unit is a trimer of heterodimers as it was determined by size exclusion chromatography. The structure reported in this article is very similar to the structures of APC previously reported, 1B33 that contains the L_C [14] and 1KN1 from the rhodophyta *Porphyra yezoensis* [27].

The environment of the chromophore phycocyanobilin is highly conserved among different subunits

Subunits α^{II} , β^{18} and PB domain were modeled and analyzed. A comparison among subunits in APC of *M. laminosus* [14], *P. yezoensis* [27], *G. chilensis* (PDB IDs 1B33, 1KN1, and 5TJF (this paper), respectively) and the α^{II} model showed that the residues interacting with the phycocyanobilin chromophore are highly conserved (S1 Table). There is also high degree of conservation for the conformation of the chromophore (ASA) [36, 37], which is confirmed by the distances between rings A and D in the phycocyanobilin (Fig 5A and S1 Table). Instead the PB domain presents a SSA conformation that could account for the different spectroscopic

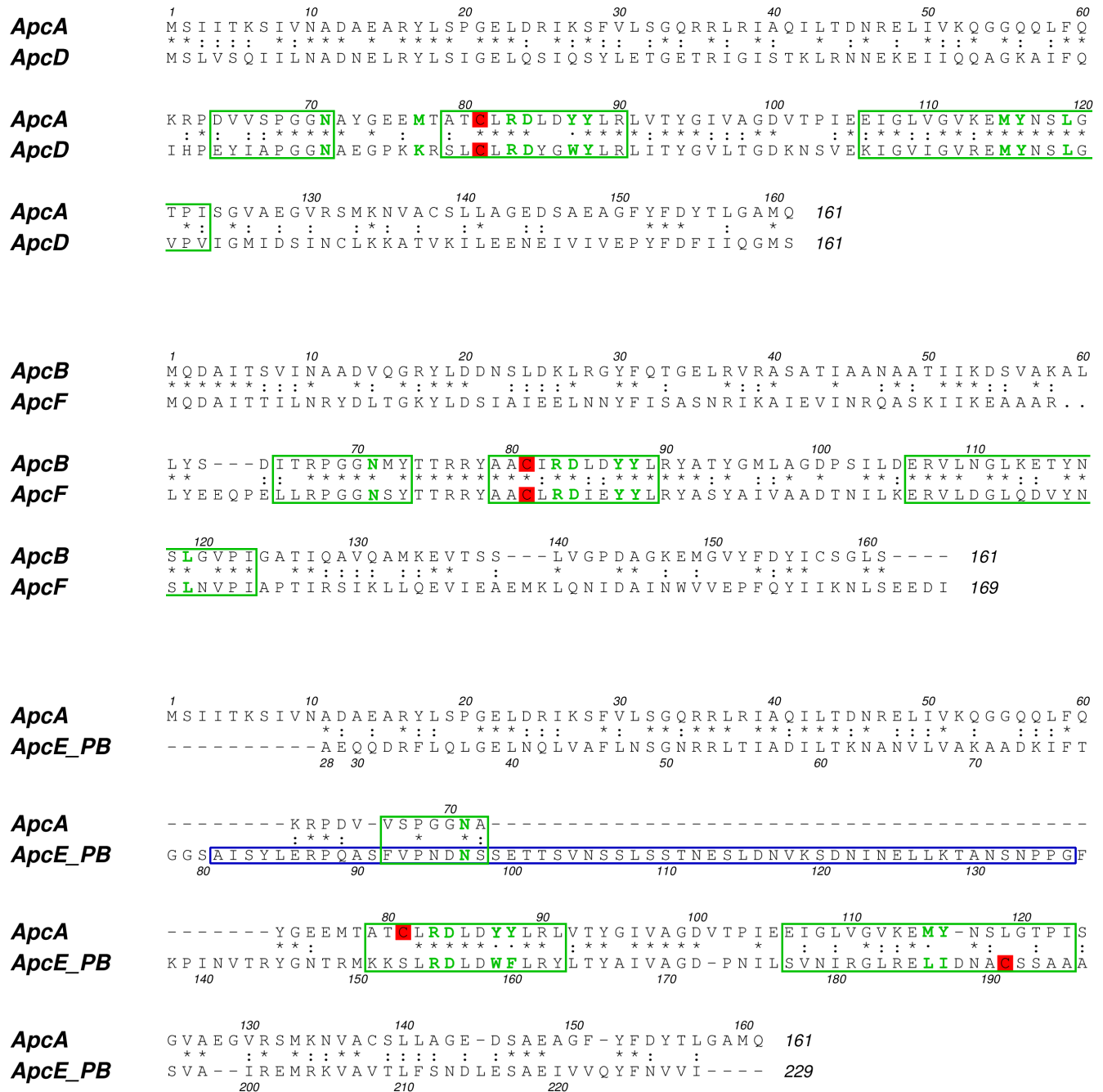


Fig 3. Sequence comparison between α and α^{II} (ApcA and ApcD), β and β^{18} (Apcb and Apcf) and α and the PB_domain of the L_{CM} (ApcA and ApcE). Chromophore binding region are enclosed in green rectangles, and the conserved residues are highlighted in green. The cysteine residues that bind the chromophores are shown in red background. The PB-loop sequence is enclosed in blue lines.

<https://doi.org/10.1371/journal.pone.0177540.g003>

characteristics of the L_{CM} . A comparison between the β and β^{18} subunit is also shown in Fig 5B. In general, there are not important differences between β and β^{18} subunits and between α and α^{II} subunits as it was expected by the sequence identity.

The same comparison was performed between α subunit of 5TJF, the structure reported for the PB domain from *Nostoc sp.* (PDB ID: 4XXI) [32], and the model for the PB domain in

Table 1. Information on the data collection and refinement for the determination of the three dimensional structure of Allophycocyanin from *Gracilaria chilensis*.

Data collection	Allophycocyanin
Space Group	P321
<i>Cell Dimensions</i>	
a, b, c (Å)	97.41, 97.41, 63.83
α, β, γ (°)	90, 90, 120
Resolution range (Å)	42.18–2.3 (2.38–2.30)
Rmerge	0.1303 (0.3568)
$I / \sigma I$	6.18 (2.16)
Completeness (%)	97 (97)
Redundancy	2.9(2.6)
<i>Refinement</i>	
Resolution (Å)	2.3
N° reflections/N° reflections used	84722(7757)/29317(2937)
Rwork / Rfree	25.70/28.65
N° atoms	3035
Protein	2422
Ligand/ion	135
Water	478
B-factors	31.75
Protein	32.01
Ligand	29.65
Water	31.04
<i>r.m.s. deviation</i>	
Bond lengths (Å)	0.004
Bond angles (°)	1.56

The values in parenthesis correspond to the last resolution shell.

<https://doi.org/10.1371/journal.pone.0177540.t001>

Gracilaria chilensis. The PB domain can replace an α subunit in a trimer of heterodimers. Nevertheless, there are obvious differences, such as the insertion of 55 residues between residues 81–136 in the PB domain; 58% of this sequence was recognized as intrinsically disordered by Disprot [38] and also contains 12 Ser, 4 Thr and 1 Tyr, all hydroxylated residues. Four of these residues (Ser98, Ser99, Thr101 and Thr102) were recognized as phosphorylation sites by PROSITE and one of them (Thr101) in a motif recognized by protein kinase C. In prokaryote, this peptide segment has been described as an interaction region for the Orange Carotenoid Protein (OCP), which has not been reported in eukaryotes yet, and also a site for regulation by phosphorylation [39], fact that has not been tested in eukaryotic red algae for potential significance.

Attention is drawn to the fact that the L_{CM} and its chromophore have been proposed to be responsible for the final transfer of energy towards chlorophylls in Photosystems. In this regard, it was important to analyze the differences in the binding site of phycocyanobilins in α subunit, the modeled PB domain and the structure reported at the PDB ID: 4XXI [32]. The position of Cys81 in the alignment (Fig 3), which binds the PCB in all the other α subunits, is occupied by Ser153 in the PB domain. The Cys191 is the residue that binds to the phycocyanobilin. In our model, the chromophore was stabilized by Asp156, Arg155, Trp159, and Phe160 (S1 Table). Besides the difference in the cysteine residue, it is possible to see minor differences in the stabilization of the ligand (Fig 5A and S1 Table). Considering the binding site and the

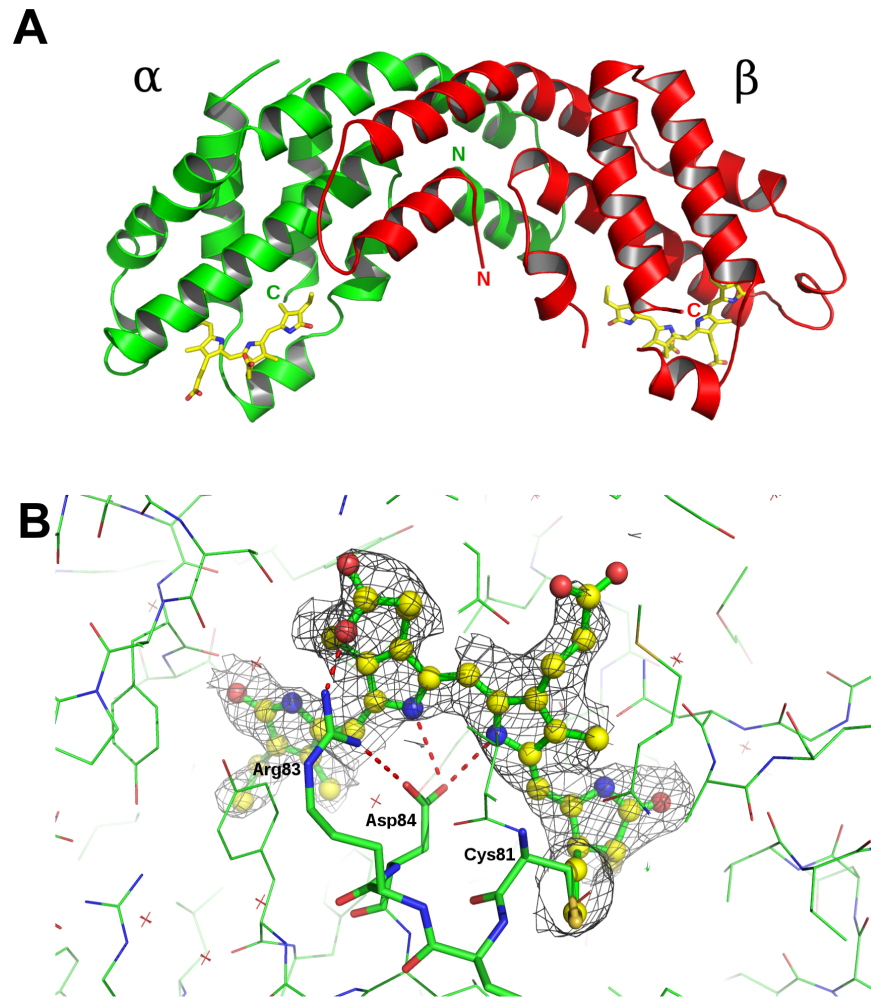


Fig 4. Crystallographic structure of Allophycocyanin from *Gracilaria chilensis*. A) Ribbon representation of the asymmetric unit, the heterodimer. B) A section of the [2F-Fo] omit electron density map is shown for phycocyanobilin in a α subunit. The residues interacting with the chromophore are also shown.

<https://doi.org/10.1371/journal.pone.0177540.g004>

conformation of the chromophore, the phycocyanobilin in the PB domain has a SSA conformation instead of ASA for the chromophore in the α subunit [36, 37]. This conformation is the same in the crystal structure of PB domain from *Nostoc* sp. (PDB ID: 4XXI) [32]. The absorption spectrum, calculated for phycocyanobilin in the model of the PB domain of *Gch*, using Gaussian 09[40] with a ZINDO-MN semiempirical approach [40], gave the $\lambda_{\max}^{\text{Abs}} = 661\text{nm}$, which agreed with the maximum absorption of the PB domain reported for *Nostoc* sp. Other relevant difference is that Cys 81 of α subunit binds from the top of PCB, while Cys 165 binds from the bottom in the PB domain (See Fig 5). This difference may be related to the fact that PCB needs a specific cysteine lyase to be bound to Cys 81 in α subunit. However, it has been reported that for L_{CM} , the process of binding the chromophore would be autocatalytic [15]. It has been also reported a mechanism for the addition of PCB to Cys 155 in Phycocyanin in cyanobacteria. It involves the presence of an aspartic acid participating in the formation of an acylimmonium cation on ring A of the phycocyanobilin. After that, the addition reaction to cysteine is produced with the assistance of a tyrosine residue. The authors also report that after the addition, a conformational change is produced in the chromophore. The PB domain

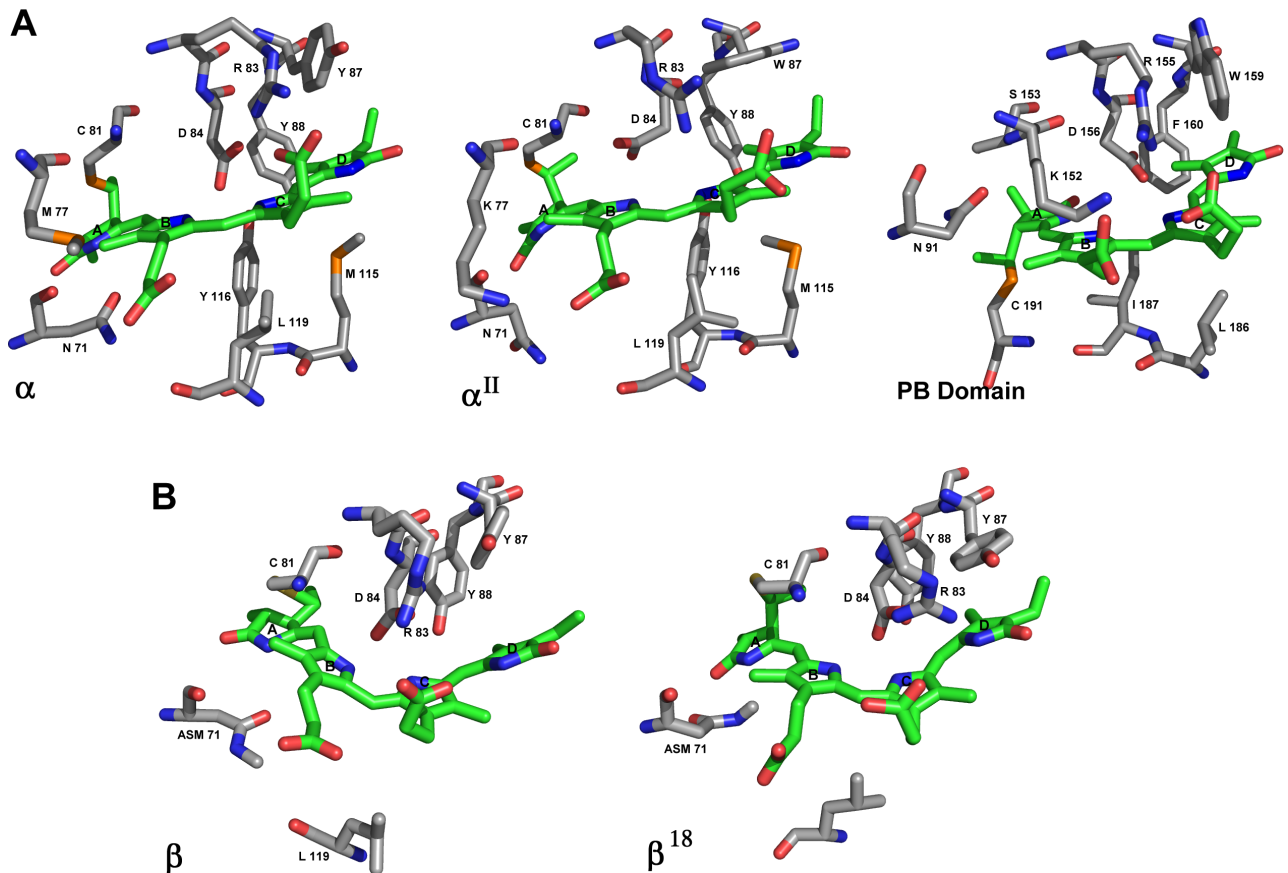


Fig 5. Binding sites of phycocyanobilin. A) Sticks representation of binding site of phycocyanobilin in a subunit of 5TJF (this paper), α^{II} and the PB domain in APC_3. The chromophores are represented in green. B) Sticks representation of β subunit in 5TJF and β^{18} in APC_3. The chromophores are also in green.

<https://doi.org/10.1371/journal.pone.0177540.g005>

model from *Gch* locates also a tyrosine and an aspartic acid in the vicinity of the phycocyanobilin; however the position of the functional groups seems to be located too far in the binding state. It is possible that before the reaction to occur and the positioning of the chromophores, these residues could be part of the catalysis, and after the binding their location changes to the final position in the molecule.

The crystal structure of Allophycocyanin allowed the building of the different type of trimers present in the core

Fig 6 shows the models created for APC, APC_1, APC_2 and APC_3 using the structure of APC reported here, with the corresponding substitution of subunits as is shown.

Each trimer was analyzed considering the number and type of interactions among subunits, the interaction surfaces on each trimer as a whole and considering the substitutions. (The data is shown in S2 Table). A comparison between trimers as follows:

1. APC/APC_1: The presence of the Lc (Chain G) did not affect the interaction surface (aprox. 1450 \AA^2) between subunits, yet the number of hydrogen bonds between heterodimers decreases. The Lc interacted mainly with the β (chains B, D and F) subunits by hydrogen bonding.

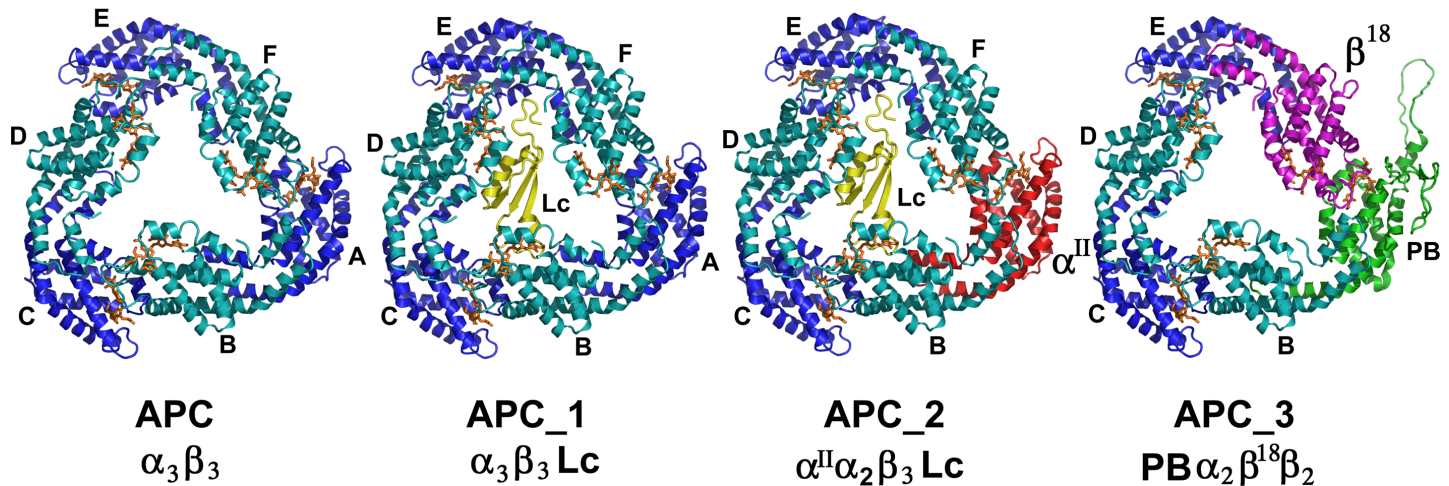


Fig 6. Structural models proposed for each trimer of Allophycocyanin. A) Schematic representation of the different composition trimers. B) Structure of APC, APC₁, APC₂, and APC₃.

<https://doi.org/10.1371/journal.pone.0177540.g006>

2. *APC₁/APC₂*: Both trimers contained the Lc, but APC₂ has the substitution of α by α^{II} (Chain A). The interactions of Lc in both oligomers were very similar with β chains, especially with chain D.
3. *APC/APC₃*: The substitution of chain A (α) by PB domain and chain F (β) by β^{18} produced a trimer that contained these two special subunits in neighbor heterodimers. The $\alpha\beta$ heterodimers conserved the interactions (H-bonds/salt bridges), but less salt bridges were observed in heterodimers with the substitutions. The interaction surfaces in both trimers are similar (aprox 1450\AA^2), except for the lower value measured for the interaction between subunits F and E (1154\AA^2)

The structural analysis of the models proposed in this article allowed to arrange them face to face to form hexamers, which interact back to back with other hexamers to organize the cylinders present in the core as it was proposed for *Synechococcus* [41].

The experimental data available so far, for the subunit composition of trimers proposed in this article, indicated that L_{CM} (PB_{domain}) and β^{18} were not in the same heterotrimer with α^{II} [41]. According to spectroscopic data obtained by Kuzminov *et al* [42], β^{18} should transfer energy to the L_{CM}, a fact that could be accomplished only if they are in the same trimer but neighboring heterodimers. Finally, they propose that β^{18} is a mediator in the energy transfer towards the final emitter, with the chromophore present in the L_{CM} (PB_{domain}).

The modeling of the 55 extra residues (PB_{loop}) and the analysis of the sequence (Fig 3) indicated a very disordered region that is probably interacting with other proteins. Cross-linking experiments involving cyanobacterial phycobilisomes [43] do not provide information on the possible interactions of this segment of PB domain.

The model for the Linker core fits very well the space in the center of APC; clearly, this small molecule contributes to give asymmetry to allophycocyanin. It has been reported that the L_C modifies the spectroscopic properties of the PCB in APC₁ and APC₂. According to our results and those from Reuter *et al* [14], in the trimeric state, one explanation is the different environment of the chromophore upon binding of L_C.

Future perspectives

Our work on the structure of the phycobilisome components of an eukaryotic algae such as *Gracilaria chilensis*, including the study of the components of its core in this article, pretends to fill a gap produced by the enormous amount of information published in prokaryotes, especially *Synechocystis* and the small amount of information produced about this system in eukaryotic organisms. From the beginning, the purpose of our study on Phycobilisomes was to understand how the structure of this super complex supported the high efficiency of the energy transfer towards the photosystems. In this article, we are reporting new pieces of the big puzzle.

Supporting information

S1 File. Methodology for phycobilisomes purification.

(DOCX)

S2 File. Species and sequences used to design the primers for PCR.

(DOCX)

S3 File. Methodology for amplification assays.

(DOCX)

S4 File. Methodology for Allophycocyanin purification.

(DOCX)

S5 File. Sequence of the genes codifying for the proteins present in the core of a phycobilisome of *Gracilaria chilensis*.

(DOCX)

S1 Table. Comparison of the PCB binding sites for α subunits.

(DOCX)

S2 Table. Interface characteristics of different trimers of Allophycocyanin. Interface area, numbers of hydrogen bonds and salt bridges between subunits in different trimers.

(DOCX)

Acknowledgments

We would like to thanks to the Soleil Synchrotron and its beamline Proxima 1 for the x-ray data collection. Also, we would like to thanks to the Robotic Unit at Universidad de Chile for the initial screening of crystallization conditions.

Author Contributions

Conceptualization: MB JDL MF JMO.

Data curation: JDL.

Formal analysis: JDL MF.

Funding acquisition: MB.

Investigation: MAV AJV CM JDL MF FK.

Methodology: MF JDL MB JMO.

Project administration: MB.

Resources: MB JMO.

Software: JMO MF JDL.

Supervision: JMO MB.

Validation: JDL MF.

Visualization: JMO JDL MF.

Writing – original draft: JMO JDL MF MB.

Writing – review & editing: JMO JDL MF MB.

References

1. Glazer AN. Light guides. Directional energy transfer in a photosynthetic antenna. *J Biol Chem.* 1989; 264: 1–4. PMID: [2491842](#)
2. MacColl R. Cyanobacterial Phycobilisomes. *J Struct Biol.* 1998; 124: 311–334. <https://doi.org/10.1006/jsbi.1998.4062> PMID: [10049814](#)
3. Adir N. Elucidation of the molecular structures of components of the phycobilisome: reconstructing a giant. *Photosynth Res.* 2005; 85: 15–32. <https://doi.org/10.1007/s11120-004-2143-y> PMID: [15977057](#)
4. Sun L, Wang S, Zhao M, Fu X, Gong X, Chen M, et al. Phycobilisomes from Cyanobacteria. *Handbook on Cyanobacteria: Biochemistry, Biotechnology and Applications.* Nova Science Publishers; 2009. pp. 105–160.
5. Sidler WA. Phycobilisome and Phycobiliprotein Structures. In: Bryant DA, editor. *The Molecular Biology of Cyanobacteria.* Springer Netherlands; 1994. pp. 139–216.
6. MacColl R. Allophycocyanin and energy transfer. *Biochim Biophys Acta BBA—Bioenerg.* 2004; 1657: 73–81.
7. Arteni AA, Ajlani G, Boekema EJ. Structural organisation of phycobilisomes from *Synechocystis* sp. strain PCC6803 and their interaction with the membrane. *Biochim Biophys Acta BBA—Bioenerg.* 2009; 1787: 272–279.
8. Hagopian JC, Reis M, Kitajima JP, Bhattacharya D, Oliveira MC de. Comparative Analysis of the Complete Plastid Genome Sequence of the Red Alga *Gracilaria tenuistipitata* var. *liui* Provides Insights into the Evolution of Rhodoplasts and Their Relationship to Other Plastids. *J Mol Evol.* 2004; 59: 464–477. <https://doi.org/10.1007/s00239-004-2638-3> PMID: [15638458](#)
9. Lundell DJ, Glazer AN. Molecular architecture of a light-harvesting antenna. Core substructure in *Synechococcus* 6301 phycobilisomes: two new allophycocyanin and allophycocyanin B complexes. *J Biol Chem.* 1983; 258: 902–908. PMID: [6401721](#)
10. Maxson P, Sauer K, Zhou J, Bryant DA, Glazer AN. Spectroscopic studies of cyanobacterial phycobilisomes lacking core polypeptides. *Biochim Biophys Acta BBA—Bioenerg.* 1989; 977: 40–51.
11. Houmar J, Capuano V, Colombano MV, Coursin T, Marsac NT de. Molecular characterization of the terminal energy acceptor of cyanobacterial phycobilisomes. *Proc Natl Acad Sci.* 1990; 87: 2152–2156. PMID: [2107546](#)
12. Gao X, Wei T-D, Zhang N, Xie B-B, Su H-N, Zhang X-Y, et al. Molecular insights into the terminal energy acceptor in cyanobacterial phycobilisome. *Mol Microbiol.* 2012; 85: 907–915. <https://doi.org/10.1111/j.1365-2958.2012.08152.x> PMID: [22758351](#)
13. Mullineaux CW. Phycobilisome-reaction centre interaction in cyanobacteria. *Photosynth Res.* 2008; 95: 175. <https://doi.org/10.1007/s11120-007-9249-y> PMID: [17922214](#)
14. Reuter W, Wiegand G, Huber R, Than ME. Structural analysis at 2.2 Å of orthorhombic crystals presents the asymmetry of the allophycocyanin-linker complex, AP LC7. 8, from phycobilisomes of *Mastigocladus laminosus*. *Proc Natl Acad Sci.* 1999; 96: 1363–1368. PMID: [9990029](#)
15. Zhao K-H, Su P, Böhm S, Song B, Zhou M, Bubenzer C, et al. Reconstitution of phycobilisome core-membrane linker, LCM, by autocatalytic chromophore binding to ApcE. *Biochim Biophys Acta BBA—Bioenerg.* 2005; 1706: 81–87.
16. Adir N, Dines M, Klartag M, McGregor A, Melamed-Frank M. Assembly and Disassembly of Phycobilisomes. In: Shively JM, editor. *Complex Intracellular Structures in Prokaryotes.* Springer Berlin Heidelberg; 2006. pp. 47–77.

17. Jallet D, Gwizdala M, Kirilovsky D. ApcD, ApcF and ApcE are not required for the Orange Carotenoid Protein related phycobilisome fluorescence quenching in the cyanobacterium *Synechocystis* PCC 6803. *Biochim Biophys Acta BBA—Bioenerg.* 2012; 1817: 1418–1427.
18. Capuano V, Braux AS, Marsac NT de, Houmard J. The “anchor polypeptide” of cyanobacterial phycobilisomes. Molecular characterization of the *Synechococcus* sp. PCC 6301 apce gene. *J Biol Chem.* 1991; 266: 7239–7247. PMID: [1901865](#)
19. Watanabe M, Ikeuchi M. Phycobilisome: architecture of a light-harvesting supercomplex. *Photosynth Res.* 2013; 116: 265–276. <https://doi.org/10.1007/s11120-013-9905-3> PMID: [24081814](#)
20. Bird CJ, McLachlan J, Oliveira EC de. *Gracilaria chilensis* sp.nov. (Rhodophyta, Gigartinales), from Pacific South America. *Can J Bot.* 1986; 64: 2928–2934.
21. Contreras-Martel C, Matamala A, Bruna C, Poo-Caamaño G, Almonacid D, Figueroa M, et al. The structure at 2 Å resolution of Phycocyanin from *Gracilaria chilensis* and the energy transfer network in a PC–PC complex. *Biophys Chem.* 2007; 125: 388–396. <https://doi.org/10.1016/j.bpc.2006.09.014> PMID: [17118524](#)
22. Contreras-Martel C, Martínez-Oyanedel J, Bunster M, Legrand P, Piras C, Vernede X, et al. Crystallization and 2.2 Å resolution structure of R-phycoerythrin from *Gracilaria chilensis*: a case of perfect hemihedral twinning. *Acta Crystallogr D Biol Crystallogr.* 2001; 57: 52–60. PMID: [11134927](#)
23. Figueroa M, Martínez-Oyanedel J, Matamala AR, Dagnino-Leone J, Mella C, Fritz R, et al. In silico model of an antenna of a phycobilisome and energy transfer rates determination by theoretical Förster approach. *Protein Sci.* 2012; 21: 1921–1928. <https://doi.org/10.1002/pro.2176> PMID: [23047609](#)
24. Collén J, Porcel B, Carré W, Ball SG, Chaparro C, Tonon T, et al. Genome structure and metabolic features in the red seaweed *Chondrus crispus* shed light on evolution of the Archaeplastida. *Proc Natl Acad Sci.* 2013; 110: 5247–5252. <https://doi.org/10.1073/pnas.1221259110> PMID: [23503846](#)
25. Guan X, Qin S, Zhao F, Zhang X, Tang X, others. Phycobilisomes linker family in cyanobacterial genomes: divergence and evolution. *Int J Biol Sci.* 2007; 3: 434–445. PMID: [18026567](#)
26. Vorphal MA, Gallardo-Escárate C, Valenzuela-Muñoz V, Dagnino-Leone J, Vásquez JA, Martínez-Oyanedel J, et al. De novo transcriptome analysis of the red seaweed *Gracilaria chilensis* and identification of linkers associated with phycobilisomes. *Mar Genomics.* 2017; 31: 17–19. <https://doi.org/10.1016/j.margen.2016.11.001> PMID: [27843115](#)
27. Liu J-Y, Jiang T, Zhang J-P, Liang D-C. Crystal Structure of Allophycocyanin from Red Algae *Porphyra yezoensis* at 2.2-Å Resolution. *J Biol Chem.* 1999; 274: 16945–16952. PMID: [10358042](#)
28. Adams PD, Afonine PV, Bunkóczi G, Chen VB, Davis IW, Echols N, et al. PHENIX: a comprehensive Python-based system for macromolecular structure solution. *Acta Crystallogr D Biol Crystallogr.* 2010; 66: 213–221. <https://doi.org/10.1107/S0907444909052925> PMID: [20124702](#)
29. Emsley P, Cowtan K. Coot: model-building tools for molecular graphics. *Acta Crystallogr D Biol Crystallogr.* 2004; 60: 2126–2132. <https://doi.org/10.1107/S0907444904019158> PMID: [15572765](#)
30. Afonine PV, Grosse-Kunstleve RW, Echols N, Headd JJ, Moriarty NW, Mustyakimov M, et al. Towards automated crystallographic structure refinement with phenix.refine. *Acta Crystallogr D Biol Crystallogr.* 2012; 68: 352–367. <https://doi.org/10.1107/S0907444912001308> PMID: [22505256](#)
31. Webb B, Sali A. Comparative Protein Structure Modeling Using MODELLER. *Current Protocols in Bioinformatics.* John Wiley & Sons, Inc.; 2002.
32. Tang K, Ding W-L, Höppner A, Zhao C, Zhang L, Hontani Y, et al. The terminal phycobilisome emitter, LCM: A light-harvesting pigment with a phytochrome chromophore. *Proc Natl Acad Sci.* 2015; 112: 15880–15885. <https://doi.org/10.1073/pnas.1519177113> PMID: [26669441](#)
33. Comeau SR, Gatchell DW, Vajda S, Camacho CJ. ClusPro: a fully automated algorithm for protein–protein docking. *Nucleic Acids Res.* 2004; 32: W96–W99. <https://doi.org/10.1093/nar/gkh354> PMID: [15215358](#)
34. Wiederstein M, Sippl MJ. ProSA-web: interactive web service for the recognition of errors in three-dimensional structures of proteins. *Nucleic Acids Res.* 2007; 35: W407–W410. <https://doi.org/10.1093/nar/gkm290> PMID: [17517781](#)
35. Lovell SC, Davis IW, Arendall WB, de Bakker PIW, Word JM, Prisant MG, et al. Structure validation by α geometry: ϕ , ψ and $C\beta$ deviation. *Proteins Struct Funct Bioinforma.* 2003; 50: 437–450.
36. Tu P, Yao Y, Li Y, Liu B. Conformational flexibility of phycocyanobilin: Monte-Carlo and DFT study. *J Mol Struct THEOCHEM.* 2009; 894: 9–13.
37. Göller AH, Strehlow D, Hermann G. Conformational Flexibility of Phycocyanobilin: An AM1 Semiempirical Study. *ChemPhysChem.* 2001; 2: 665–671. [https://doi.org/10.1002/1439-7641\(20011119\)2:11<665::AID-CPHC665>3.0.CO;2-O](https://doi.org/10.1002/1439-7641(20011119)2:11<665::AID-CPHC665>3.0.CO;2-O) PMID: [23686901](#)

38. Piovesan D, Tabaro F, Mičetić I, Necci M, Quaglia F, Oldfield CJ, et al. DisProt 7.0: a major update of the database of disordered proteins. *Nucleic Acids Res.* 2017; 45: D1123–D1124. <https://doi.org/10.1093/nar/gkw1279> PMID: 27965415
39. Harris D, Tal O, Jallet D, Wilson A, Kirilovsky D, Adir N. Orange carotenoid protein burrows into the phycobilisome to provide photoprotection. *Proc Natl Acad Sci.* 2016; 113: E1655–E1662. <https://doi.org/10.1073/pnas.1523680113> PMID: 26957606
40. Frisch MJ, Trucks GW, Schlegel HB, Scuseria GE, Robb MA, Cheeseman JR, et al. Gaussian 09 Revision A.1.
41. Tal O, Trabelcy B, Gerchman Y, Adir N. Investigation of Phycobilisome Subunit Interaction Interfaces by Coupled Cross-linking and Mass Spectrometry. *J Biol Chem.* 2014; jbc.M114.595942.
42. Kuzminov FI, Bolychevtseva YV, Elanskaya IV, Karapetyan NV. Effect of APCD and APCF subunits depletion on phycobilisome fluorescence of the cyanobacterium *Synechocystis* PCC 6803. *J Photochem Photobiol B.* 2014; 133: 153–160. <https://doi.org/10.1016/j.jphotobiol.2014.03.012> PMID: 24727864
43. Chang L, Liu X, Li Y, Liu C-C, Yang F, Zhao J, et al. Structural organization of an intact phycobilisome and its association with photosystem II. *Cell Res.* 2015; 25: 726–737. <https://doi.org/10.1038/cr.2015.59> PMID: 25998682