

# REGULATION REGIMES FOR THE DEVELOPMENT OF HYBRID PLACES REGARDING URBAN SPRAWL AND FRAGMENTATION : A CROSS-EUROPEAN COMPARATIVE ANALYSIS.

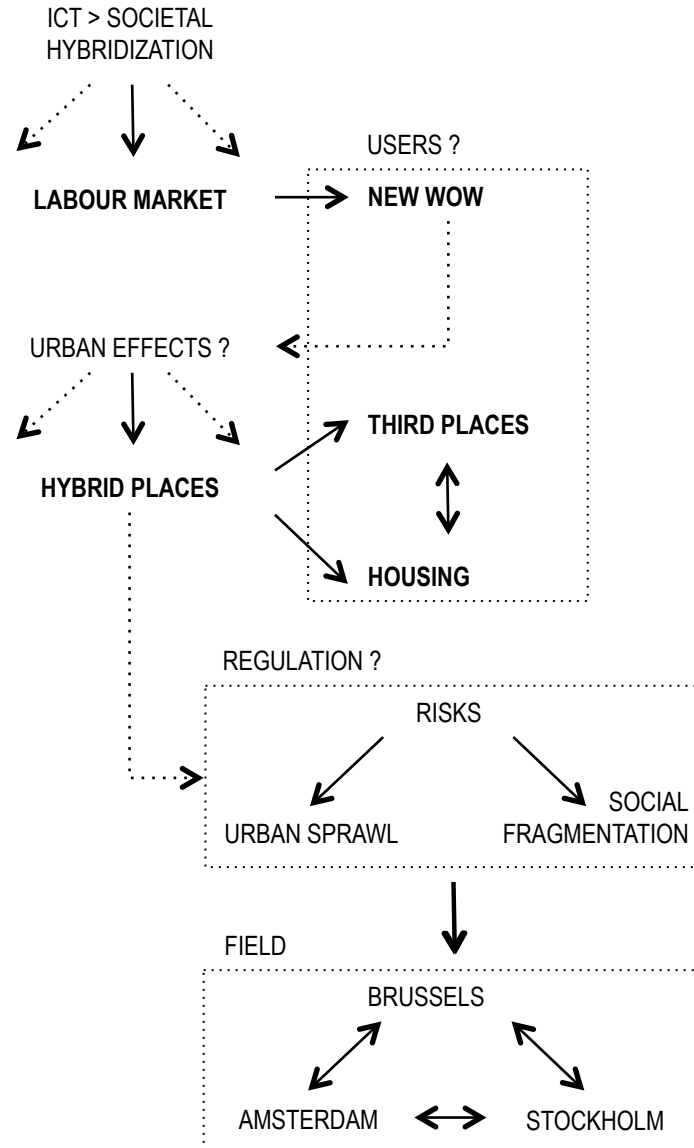


[DS2BE 27 04 2017] CONCEPTUAL FRAMEWORK / **CONSTANCE UYTTEBROUCK**

# CONTENTS

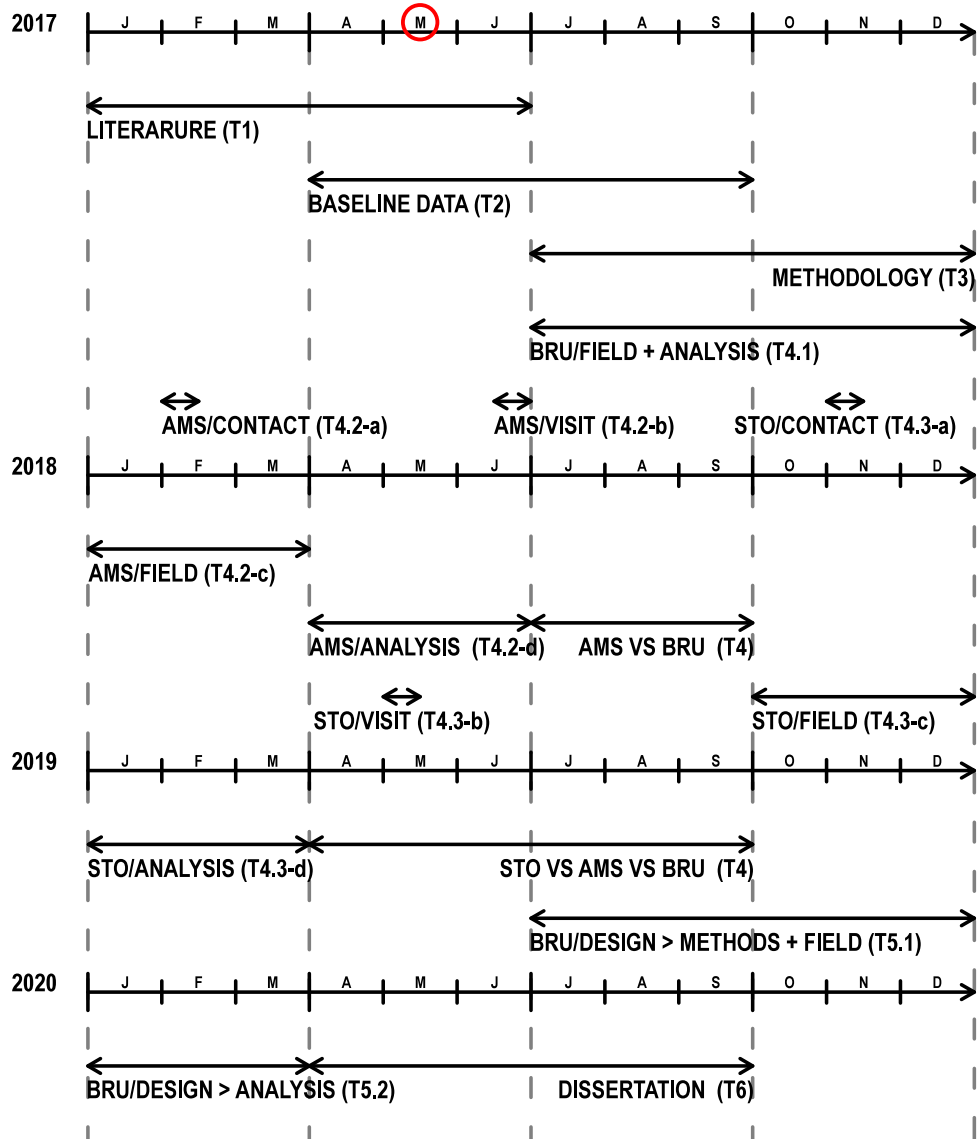
2

- TIMELINE
- CONTEXT
- HYBRID PLACES ?
- RESEARCH QUESTION
- RISKS & OBJECTIVES
- METHODOLOGY



# TIMELINE

3



## ■ LABOUR MARKET EVOLUTION

**TELEWORK**  
**HOMEWORKING**

**ICT**  
**DIGITALISATION**

**MOBILE WORK**  
**« NWOW »**

WORK-LIFE BALANCE

DEREGULATION  
LABOUR VALUE  
RELATIONSHIPS

NOMADISM  
**PRECARIOUSNESS**  
POROSITY



© <http://www.smartindianwomen.com>



© <http://bizblog.btireland.ie>



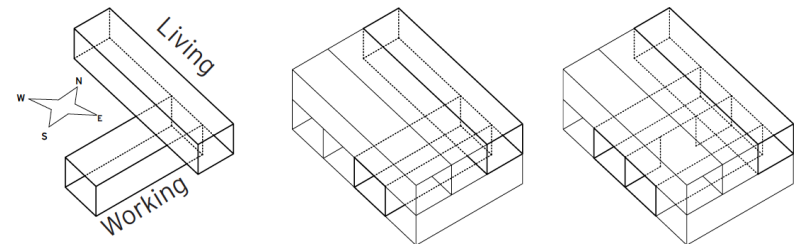
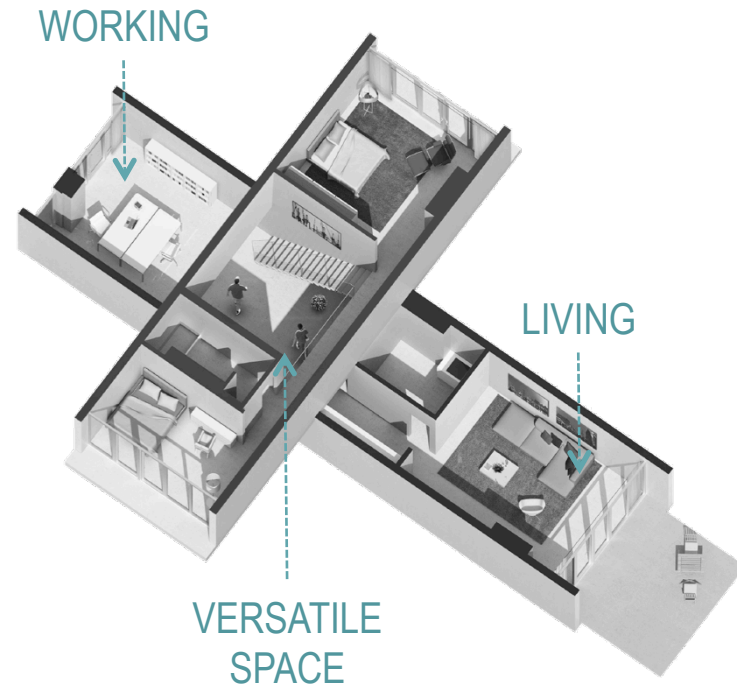
© <http://elmarplatense.com>

# HYBRID PLACES ?

5

LEMA

- HYBRID PLACES =
  - PROFESSIONAL + LIVING
  - BUILDING (UNIT)
  - NEW DEVELOPMENTS >< RECONVERSIONS, ADAPTATIONS
  - ORIGINALLY >< LIFE CYCLE
  - FORMAL >< INFORMAL
  
- AT THE DWELLING SCALE > INCREASING FLEXIBILITY



# HYBRID PLACES ?

6

LEMA

- // **THIRD PLACES**
  - COWORKING, INCUBATORS, FABLABS, PUBLIC SPACES,...
  - AMENITIES, DEVICES
  - SYNERGY, INNOVATION

**GREENBIZZ BRUXELLES**



© <http://www.greenbizz.brussels>

**WEWORK AMSTERDAM**



© <https://www.wework.com>

**WORKAROUND STOCKHOLM**



© <https://www.workaround.se>

# HYBRID PLACES ?

- **ISSUES AT THE CITY SCALE/ NEW GEOGRAPHICAL DIVISION OF LABOUR**
- **MOBILITY / APPROPRIATE NETWORKS**
- **URBAN SPRAWL / JOBS-HOUSING BALANCE**
- **ACCES TO HOUSING / MARKET AND HOUSING POLICY**



© <https://eu-smartcities.eu>



© <https://urbanist.co>



© <https://accesstohousing.simcoe.ca>

# RESEARCH QUESTION

8

LEMA

“WHAT KIND OF **REGULATION** REGIMES CAN BE SET UP TO MITIGATE **HYBRID PLACES** DEVELOPMENT REGARDING ITS IMPACT ON **URBAN SPRAWL AND FRAGMENTATION** ? ”



# RISKS & OBJECTIVES

9

LEMA

## RISKS

1. **URBAN SPRAWL &  
INNER CITY  
REDEVELOPMENT**



## OBJECTIVES

**HYBRID STOCK AT  
THE URBAN REGION  
SCALE**

2. **URBAN & SOCIAL  
FRAGMENTATION**



**PUBLIC HOUSING  
POTENTIAL**



**REGULATION  
REGIMES**

- **COMPARATIVE ANALYSIS** [BRUSSELS / AMSTERDAM / STOCKHOLM]
  - MAP HYBRID STOCK > EXTENT
    - INDICATORS : LOCATION, FORMAL/INFORMAL, USERS' PROFILE
  - INTERVIEWS > STAKEHOLDERS
  - SCENARIO WORKSHOPS > FEEDBACK
  
- **IN-DEPTH ANALYSIS** [BRUSSELS > PUBLIC HOUSING]
  - TYPOLOGIES > DECISION SUPPORT
  - COST-BENEFITS ANALYSIS > SCENARIO VALIDATION

**THANK YOU FOR YOUR ATTENTION**



**[DS2BE 27 04 2017] CONCEPTUAL FRAMEWORK / [CONSTANCE UYTTEBROUCK](#)**