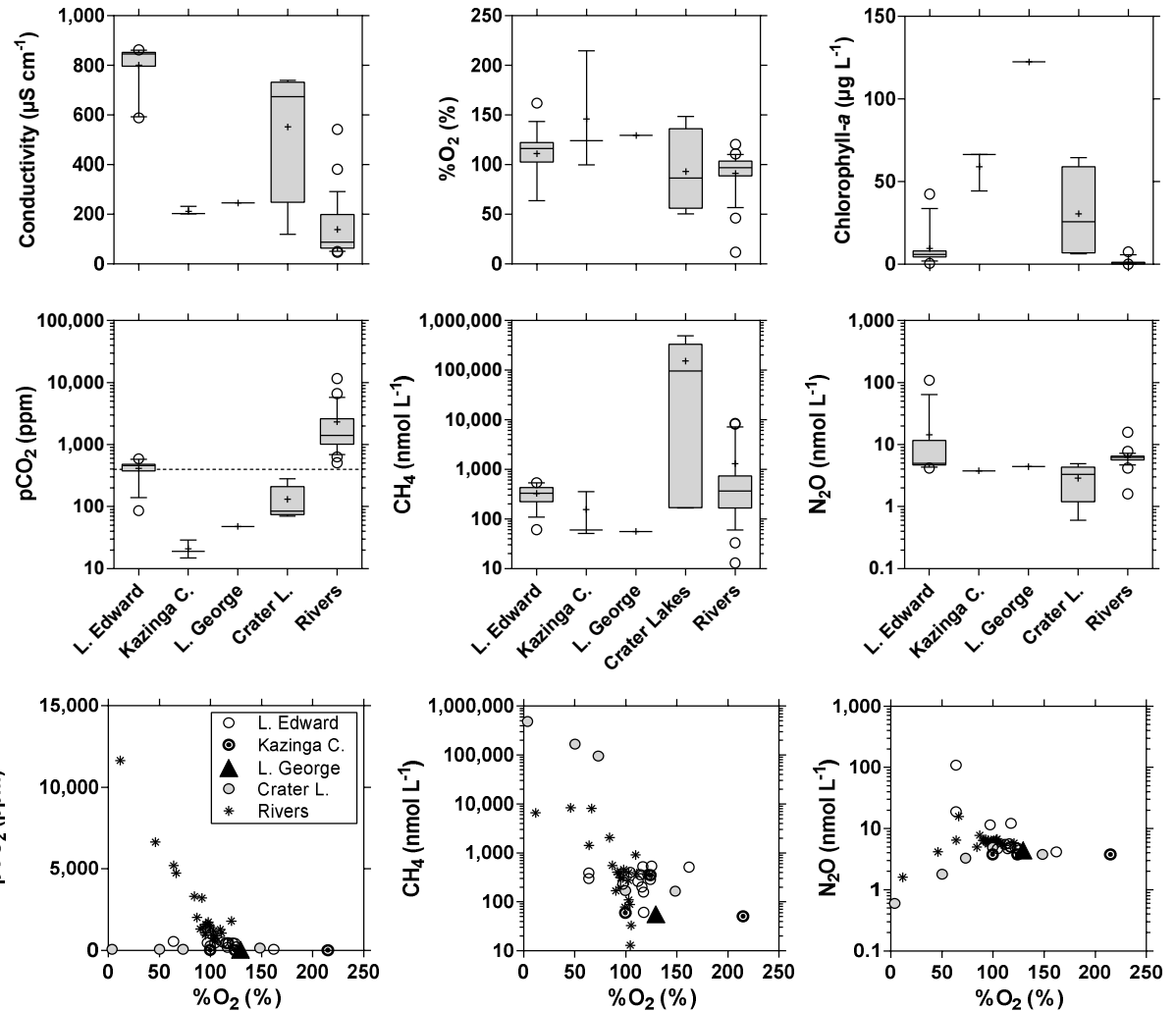
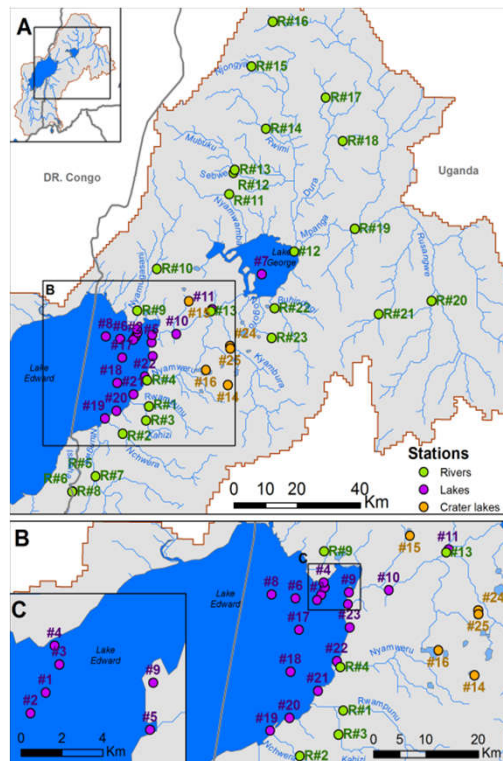


Distribution of dissolved green-house gases (CO₂, CH₄, N₂O) in Lakes Edward and George: Results from the first field cruise of the HIPE project

Alberto V. Borges¹, Cédric D.T. Morana², Thibault Lambert¹, William Okello³, Steven Bouillon²

(1) University of Liège (Belgium) (alberto.borges@ulg.ac.be), (2) KULeuven (Belgium), (3) National Fisheries Research Institute (Ouganda)

Water samples were obtained in Lake Edward (n=14), Lake George (n=1), crater lakes (n=5) and rivers (n=25) during the first HIPE cruise (October 2016). Lake George and the crater lakes were strongly under-saturated in CO₂ and over-saturated in CH₄ owing to high phytoplanktonic production (cyanobacteria). Lake Edward was moderately over-saturated in both CO₂ and CH₄. Rivers showed CO₂ and CH₄ within the range previously reported in Africa. All systems were under-saturated in N₂O owing to sedimentary denitrification.



www.co2.ulg.ac.be/hipe/

