

Tom.Gheldof@kuleuven.be



KU LEUVEN

DARIAH-BE: Towards an ecosystem of Digital Humanities Research Centres in Belgium



DHLabs2016

be.dariah.eu | @DARIAHbe

DARIAH in Europe



- **DARIAH-EU:**
 - **Digital Research Infrastructure for the Arts and Humanities**
 - ✓ aims to enhance and support digitally-enabled research and teaching across the arts & humanities
 - ✓ brings together national activities from its Member countries
 - ✓ offers a network of tools and services

Working Groups: Text and Data Analytics, Training and Education, Guidelines and Standards, ...

➤ <http://www.dariah.eu>



DHLabs2016

Digital Humanities Centres: Experiences and Perspectives

Warsaw – December 8, 2016

DARIAH in Belgium



- **DARIAH-BE:**
 - **founded in 2015**

A screenshot of the DARIAH-EU website's Belgium country profile page. The header features the DARIAH-EU logo and the text "Digital Research Infrastructure for the Arts and Humanities". Below the header is a navigation menu with orange and red buttons for "About", "What we do", "Contributions", "News", and "Service". The main content area includes a breadcrumb trail: "Home / About / Our Partners / Country profile". The title "Belgium" is prominently displayed. Below the title, the following information is listed: "Representing Entity: Belgian Science Policy Office (BELSPO)", "National Representative: Chris De Loof", "National Coordinating Institution: Ghent Centre for Digital Humanities (University of Ghent)", and "National Coordinator: Christophe Verbruggen". The DARIAH-BE logo is also visible on the right side of the page.

➤ <http://be.dariah.eu>



DHLabs2016

Digital Humanities Centres: Experiences and Perspectives

Warsaw – December 8, 2016

DARIAH in Belgium

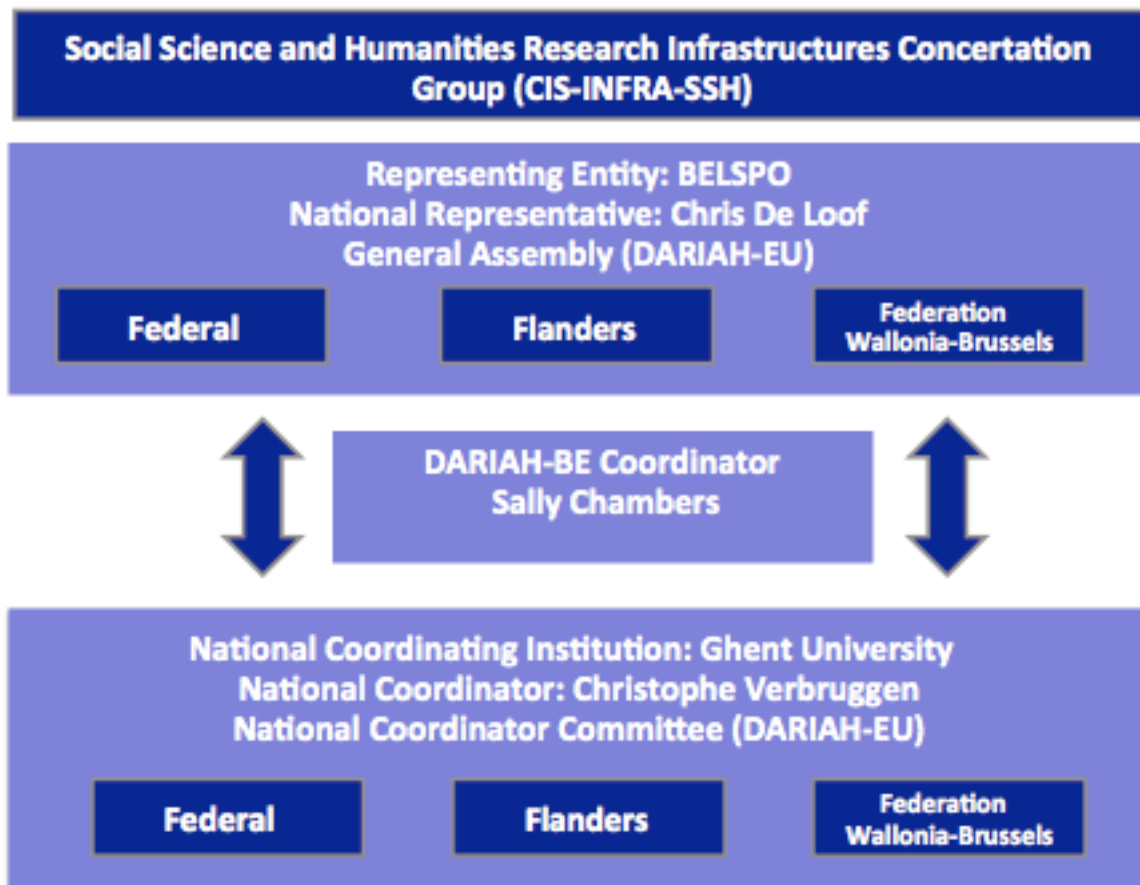


- **DARIAH-BE:**

***DARIAH in Flanders
= DARIAH-VL**

***DARIAH in Federation
Wallonia-Brussels
= DARIAH-FWB**

***Federal Scientific
Institutions in DARIAH
= DARIAH-FED**



Centre Informatique de Philosophie et Lettres



- **CIPL**
 - **created in 1983**
 - @ **ULg, Faculty of Arts & Philosophy**
 - **promote and coordinate the use of IT**

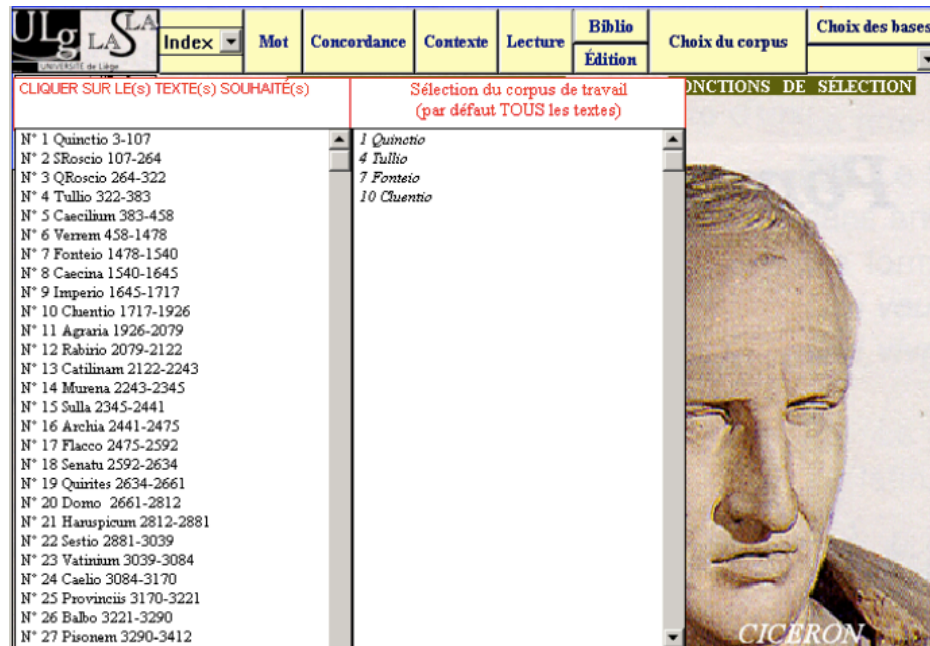


Services

- **Research**
- **Coordination**
- **Technical support (+ programming/web design)**
- **Education**
- **Maintenance of IT infrastructure**
- **Mediation between users and services**



- CIPL is linked with
 - **LASLA** (Laboratoire d'analyse statistique des langues anciennes)
 - publication of **RISSH**, French journal about humanities computing
 - development of unique databases in Latin and Ancient Greek



The screenshot shows the LASLA web interface. At the top, there is a navigation bar with tabs: Index, Mot, Concordance, Contexte, Lecture, Biblio, and Choix du corpus. Below the navigation bar, there is a search area with a dropdown menu for 'Index' and a search box. The main content area is divided into three columns. The left column contains a list of Latin texts with their numbers and titles. The middle column contains a selection of works, with a red box around the text 'Sélection du corpus de travail (par défaut TOUS les textes)'. The right column contains a large image of a bust of Cicero, with the name 'CICÉRON' written below it.

Index	Mot	Concordance	Contexte	Lecture	Biblio	Choix du corpus	Choix des bases
CLIQUER SUR LE(S) TEXTE(S) SOUHAITÉ(S)		Sélection du corpus de travail (par défaut TOUS les textes)		FONCTIONS DE SELECTION			
N° 1 Quintio 3-107						1 Quintio	
N° 2 SRoscio 107-264						4 Tullio	
N° 3 QRoscio 264-322						7 Fonteio	
N° 4 Tullio 322-383						10 Cluentio	
N° 5 Caecilium 383-458							
N° 6 Verrem 458-1478							
N° 7 Fonteio 1478-1540							
N° 8 Caecina 1540-1645							
N° 9 Imperio 1645-1717							
N° 10 Cluentio 1717-1926							
N° 11 Agraria 1926-2079							
N° 12 Rabirio 2079-2122							
N° 13 Catilinam 2122-2243							
N° 14 Murena 2243-2345							
N° 15 Sulla 2345-2441							
N° 16 Archia 2441-2475							
N° 17 Flacco 2475-2592							
N° 18 Senatu 2592-2634							
N° 19 Quirites 2634-2661							
N° 20 Domo 2661-2812							
N° 21 Hauspicum 2812-2881							
N° 22 Sestio 2881-3039							
N° 23 Vatrinum 3039-3084							
N° 24 Caelio 3084-3170							
N° 25 Provinciis 3170-3221							
N° 26 Balbo 3221-3290							
N° 27 Pisonem 3290-3412							



Centre Informatique de Philosophie et Lettres



- **CIPL is member of:**
 - **CenterNet**
 - **Humanistica**
- **Future ambitions:**
 - **reinforce connections with the Liège Game Lab**
 - <http://www.lemme.ulg.ac.be/lgl/>
 - **connect to Cléo (founders of OpenEdition.org)**
& **IFRES (institute of higher education teaching formation)**
 - **connect to DARIAH!**
- <http://web.philo.ulg.ac.be/cipl/>



Ghent Centre for Digital Humanities



- GhentCDH
 - **created @ UGhent, Faculty of Arts & Philosophy**
 - inter-disciplinary research centre facilitating digitally-enabled research in the arts and humanities at Ghent University and beyond
 - 1. digital research infrastructures
 - 2. training and education
 - 3. research support and coordination



ghentCDH



➤ <http://www.ghentcdh.ugent.be>



DHLabs2016

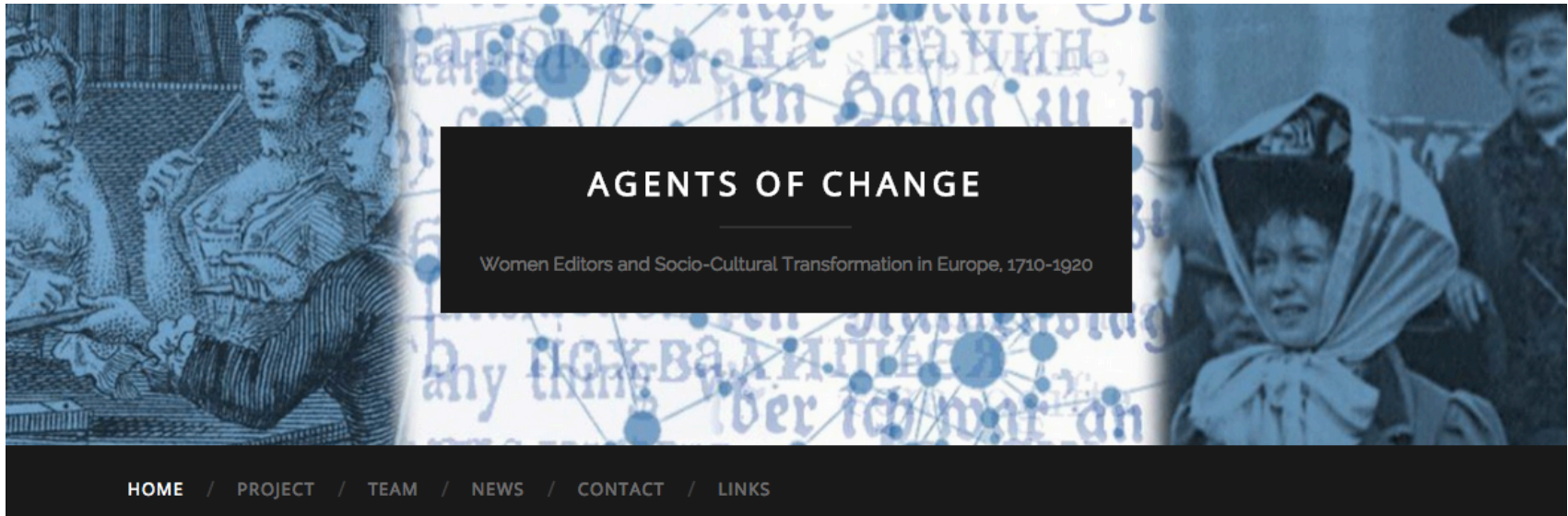
Digital Humanities Centres: Experiences and Perspectives

Warsaw – December 8, 2016

Ghent Centre for Digital Humanities



- GhentCDH
 - development of:
 - Virtual Research Environment Service Infrastructure (VRE-SI)



➤ <http://www.wechanged.ugent.be>

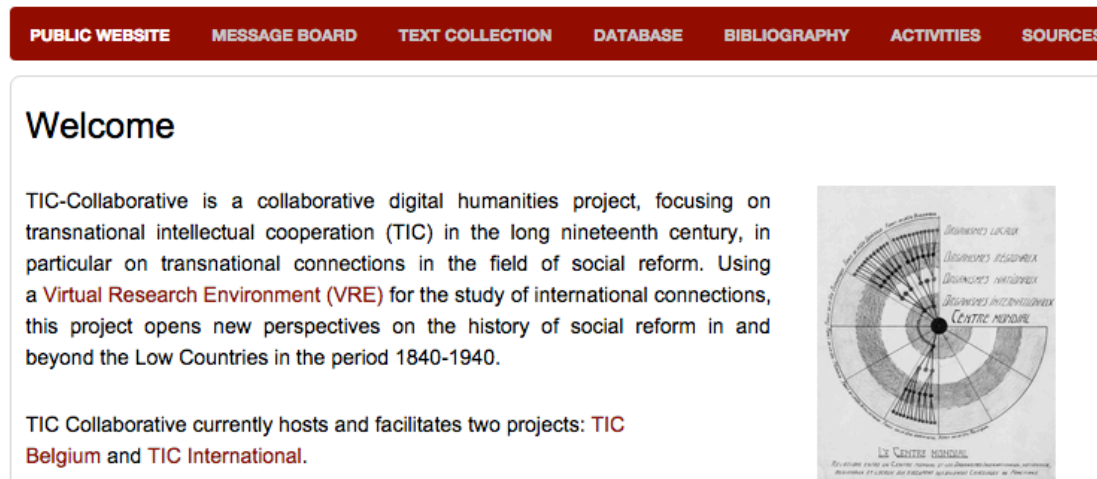


DHLabs2016

Digital Humanities Centres: Experiences and Perspectives

Warsaw – December 8, 2016

- GhentCDH
 - development of:
 - Virtual Research Environment Service Infrastructure (VRE-SI)

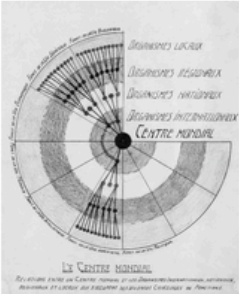


The screenshot shows the website's navigation bar with links: PUBLIC WEBSITE, MESSAGE BOARD, TEXT COLLECTION, DATABASE, BIBLIOGRAPHY, ACTIVITIES, SOURCES. Below the navigation bar is a 'Welcome' section with a paragraph of text and a small circular diagram.

Welcome

TIC-Collaborative is a collaborative digital humanities project, focusing on transnational intellectual cooperation (TIC) in the long nineteenth century, in particular on transnational connections in the field of social reform. Using a **Virtual Research Environment (VRE)** for the study of international connections, this project opens new perspectives on the history of social reform in and beyond the Low Countries in the period 1840-1940.

TIC Collaborative currently hosts and facilitates two projects: **TIC Belgium** and **TIC International**.



➤ <http://www.tic.ugent.be>



- GhentCDH is linked with
 - Library Lab (offers DH training)



Topic Modelling Workshop

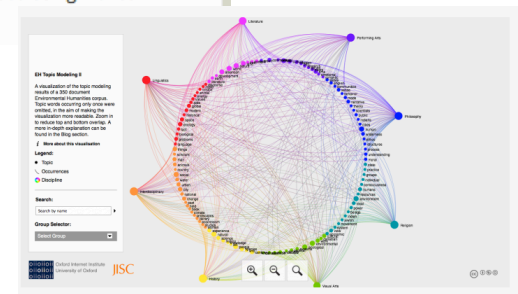
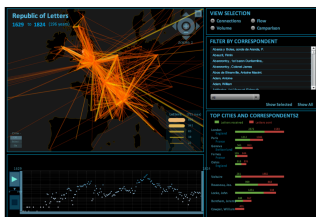
Submitted by Sally Chambers on Tue, 10/02/2015 - 16:37

Event-Date: Wednesday, 25 February, 2015 - 11:00 to 16:30

Location: Library Lab, Faculty Library of Arts and Philosophy, Rozier 44, 9000 Ghent

Topic modelling is a way of exploring large textual corpora. A 'topic' is a cluster of words that frequently occur together. With the help of contextual clues, 'topic models' can be created, by connecting words with similar meanings. The aim of the workshop is to gain an insight into using topic modelling and related methods, to understand what kind of results can be expected and how they can be interpreted. The workshop will use practical examples to demonstrate how to put together a suitable digital corpus for processed using Mallet (<http://mallet.cs.umass.edu/>) and how the results can be analysed.

Mapping the Republic of Letters



➤ <http://www.ugent.be/lw/nl/diensten/bibliotheek/libraylab>



Leuven Centre for Digital Humanities



- **LCDH**

- new hub for DH researchers at KU Leuven
 - Task Force Digital Humanities @ Faculty of Arts



- plans for 2017:

- ✓ bring together DH researchers from the Humanities @ KU Leuven
- ✓ organise training & education (workshop, DH Summer School, ...)
- ✓ facilitate collaboration between DH researchers (cross-faculty)
- ✓ support project applications from DH researchers
- ✓ work closely together with Artes library (for Humanities)

➤ <http://www.arts.kuleuven.be/digitalhumanities/>



Leuven Centre for Digital Humanities



- LCDH
 - collaboration with newly founded ARTES Library
 - ✓ DH meeting point
 - ✓ DH services (photo dome, ...)
 - ✓ DH workshops
 - ✓ DH lectures
 - ✓ develop long-term preservation strategy for DH datasets



➤ <http://bib.kuleuven.be/english/artes>



DHLabs2016

Digital Humanities Centres: Experiences and Perspectives

Warsaw – December 8, 2016

FUNDING?

- **Research Foundation Flanders (FWO)**
→ Dutch-speaking community
- **Fund for Scientific Research (FNRS)**
→ French-speaking community
- **Belgian Science Policy Office (BELSPO)**
→ **Federal Scientific Institutions:**
 - National museums
 - Federal Archive
 - National Library
- **Opportunities: Research Community DH Flanders, BRAIN, ...**
- **DARIAH-BE: ecosystem of DH Centres in Belgium**



DH CENTRE



Researchers



IT services



Libraries



CONCLUSIONS

- **Inter-institutional:**
 - Complex (funding) landscape
 - Opportunities for collaboration
- **Intra-institutional:**
 - 2 existing DH centres (Ghent & Liège)
 - 1 to be found DH centre in Leuven
 - Future hubs?
- **Bridge gap between researchers, libraries and IT services to collaborate within and outside institution**



**DARIAH-BE: Towards an ecosystem of
Digital Humanities Research Centres
in Belgium**



Questions?

Sally.Chambers@ugent.be

Katrien.Deroo@ugent.be

BO.Dozo@ulg.ac.be

Tom.Gheldof@kuleuven.be

