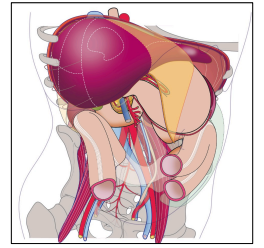


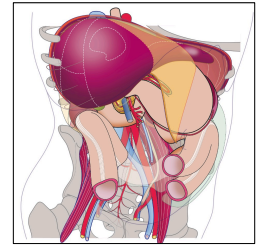
Transplantation hépatique à Liège: 1986 - 2016

Service de Chirurgie Abdominale & Transplantation
CHU Liège

30 ans



- Première greffe foie 20 juin 1986
- 700 transplantations



NCBI Resources ▾ How To ▾

PubMed.gov
US National Library of Medicine
National Institutes of Health

PubMed ▾ liver transplantation and liege
Create RSS Create alert Advanced

Article types
Clinical Trial
Review
Customize ...

Text availability
Abstract
Free full text
Full text

PubMed Commons
Reader comments
Trending articles

Publication dates
5 years
10 years
Custom range...

Species
Humans
Other Animals

Summary ▾ 20 per page ▾ Sort by Most Recent ▾ Send to: ▾

Search results
Items: 1 to 20 of 106

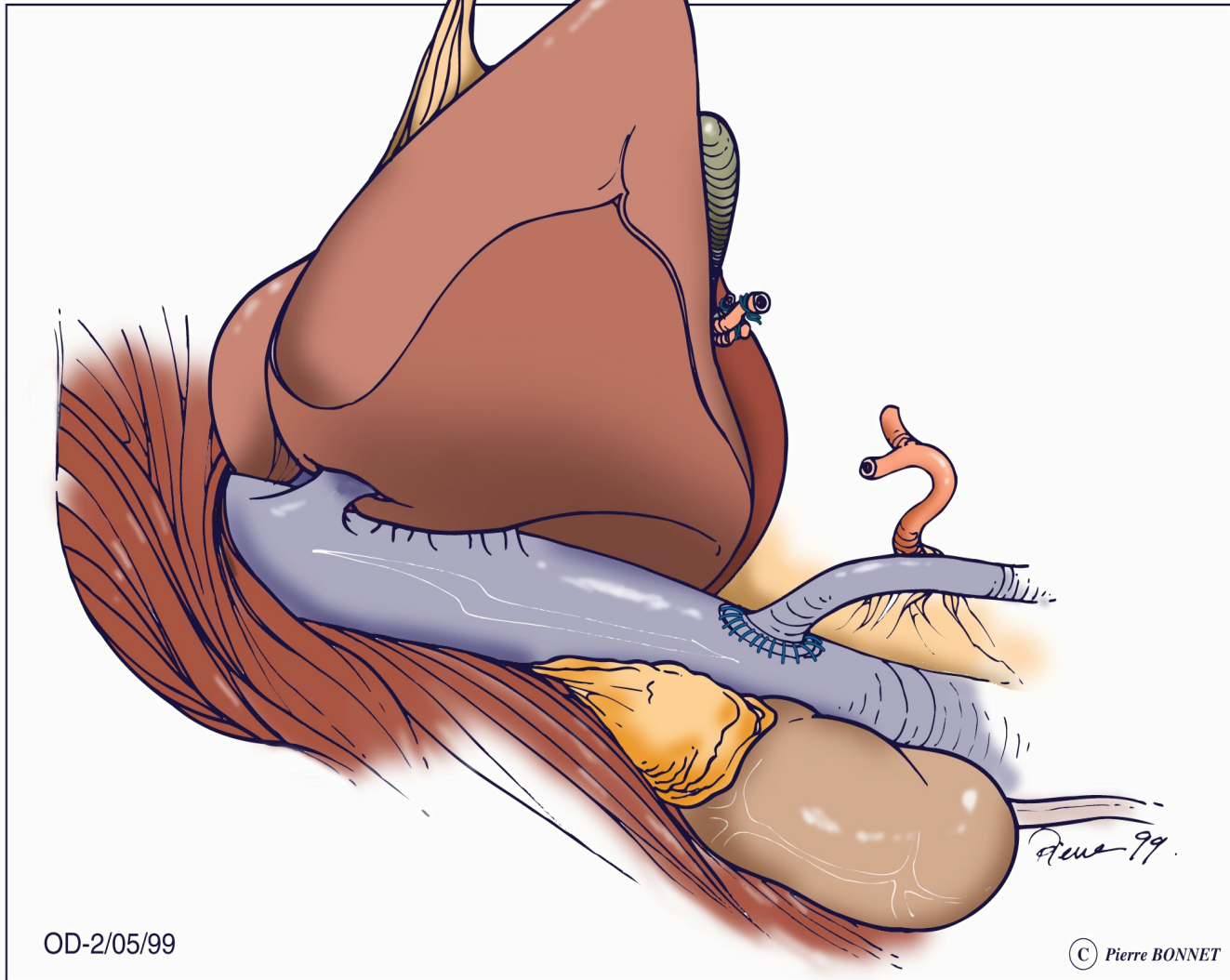
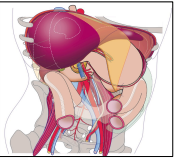
<< First < Prev Page 1 of 6 Next > Last >>

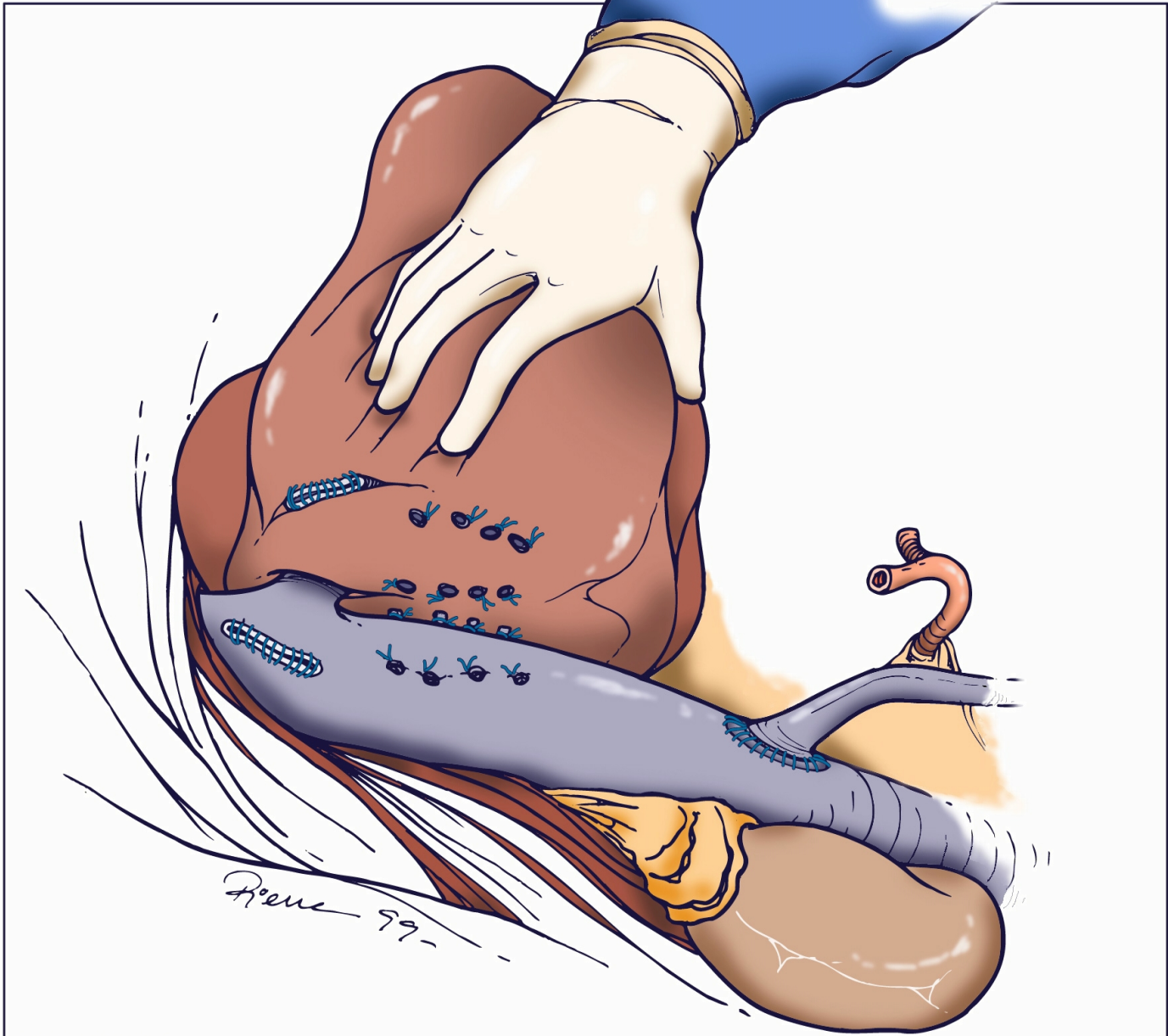
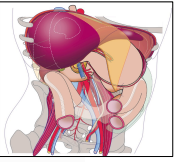
☐ [Long-term results of liver transplantation from donation after circulatory death.](#)

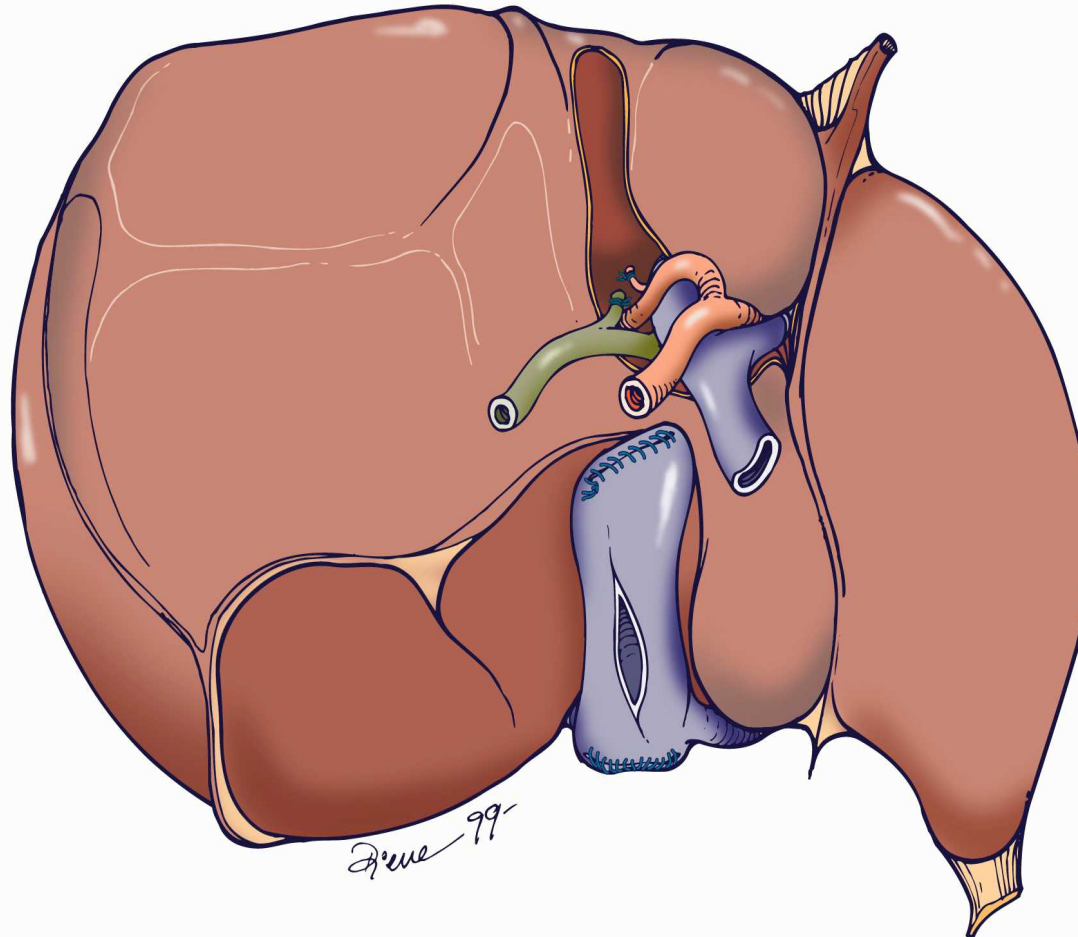
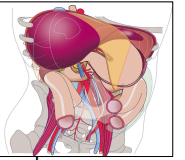
1. Blok JJ, Detry O, Putter H, Rogiers X, Porte RJ, van Hoek B, Pirenne J, Metselaar HJ, Lerut JP, Ysebaert DK, Lucidi V, Troisi RI, Samuel U, Claire den Dulk A, Ringers J, Braat AE; Eurotransplant Liver Intestine Advisory Committee (ELIAC). **Liver** Transpl. 2016 Mar 30. doi: 10.1002/lt.24449. [Epub ahead of print]
PMID: 27028896
[Similar articles](#)

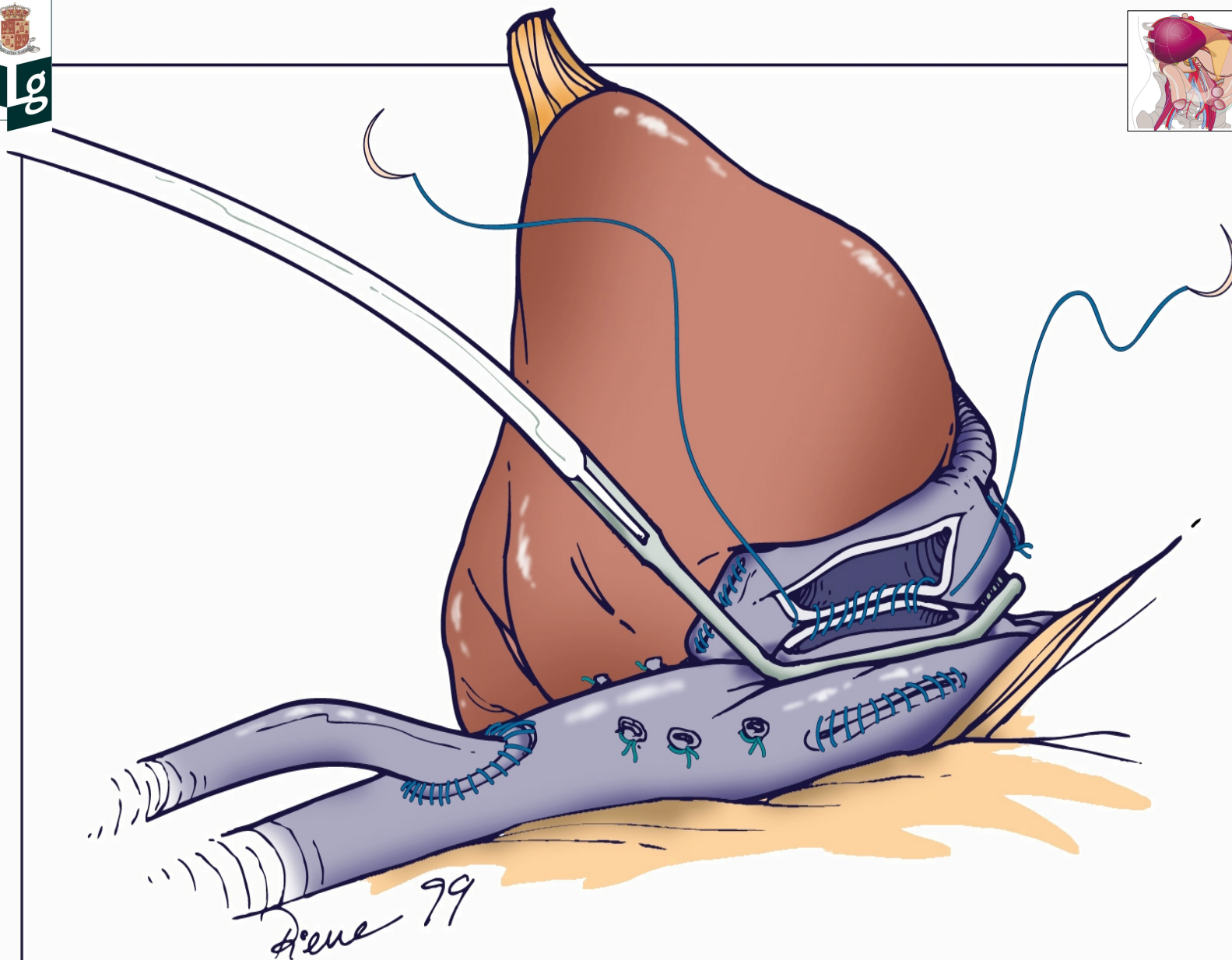
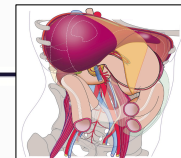
☐ [Incidence and risk factors for early renal dysfunction after liver transplantation.](#)

2. Wiesen P, Massion PB, Joris J, Detry O, Damas P. **World J Transplant.** 2016 Mar 24;6(1):220-32. doi: 10.5500/wjt.v6.i1.220.
PMID: 27011921 **Free PMC Article**
[Similar articles](#)



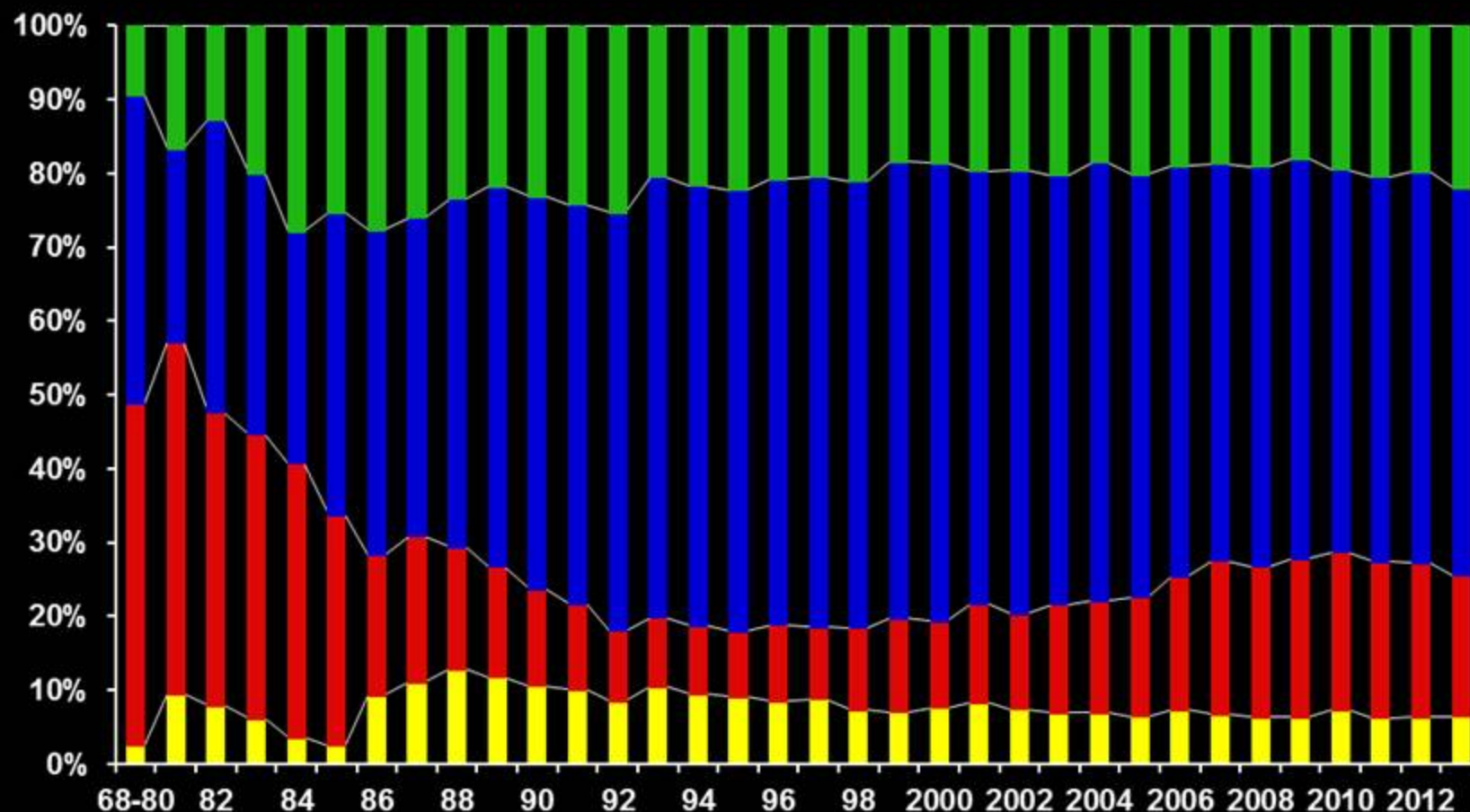






Evolution of Primary Diseases leading to Liver Transplantation in Europe

05/1968 - 12/2013



■ Acute hepatic failure : 7931

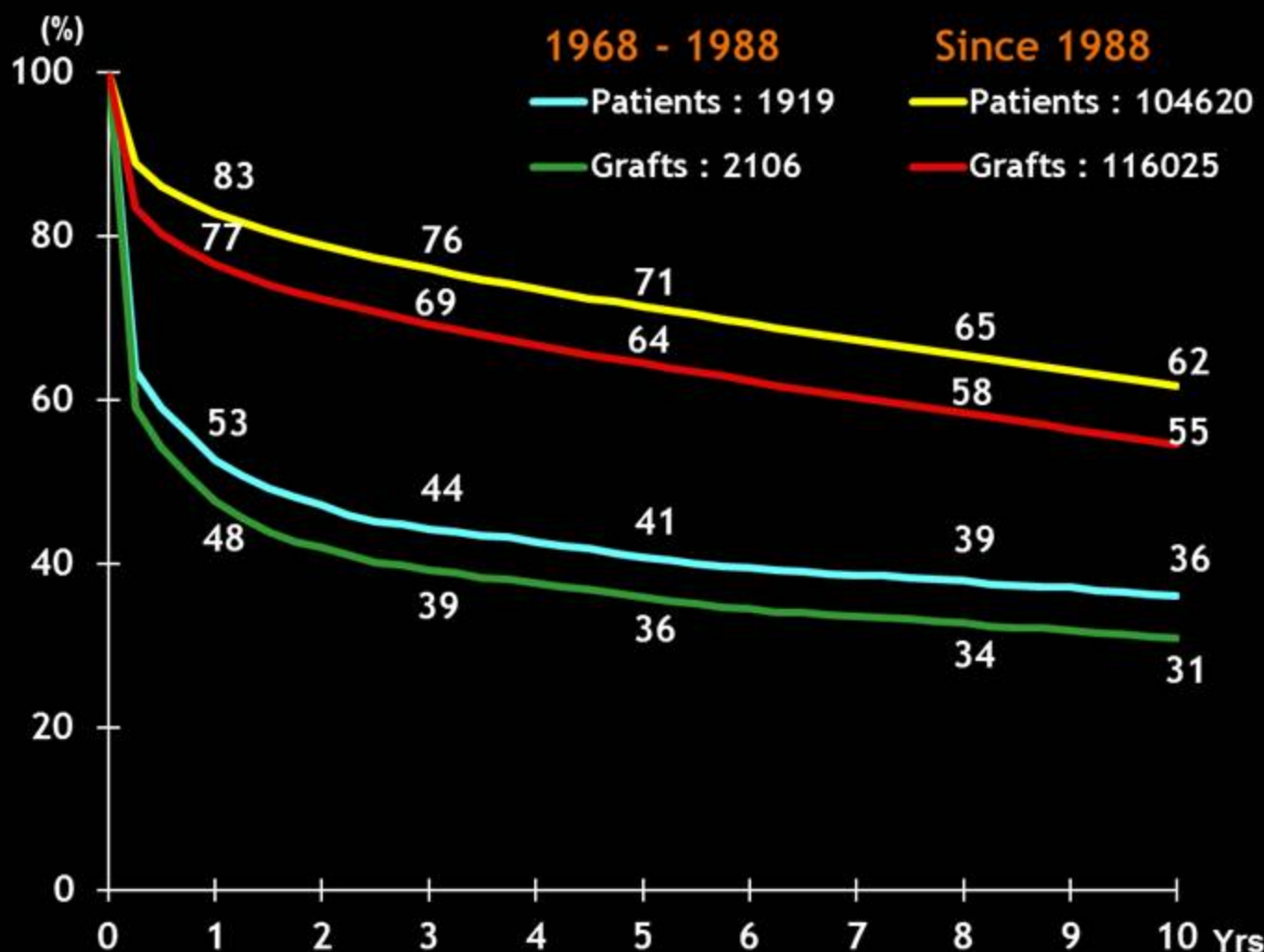
■ Cancers : 16643

■ Cirrhosis : 59072

■ Others : 21132

Patient and Graft Survival following Liver Transplantation

05/1968 – 12/2013



Patient Survival according to Adult Recipient Age

01/1988 - 12/2013

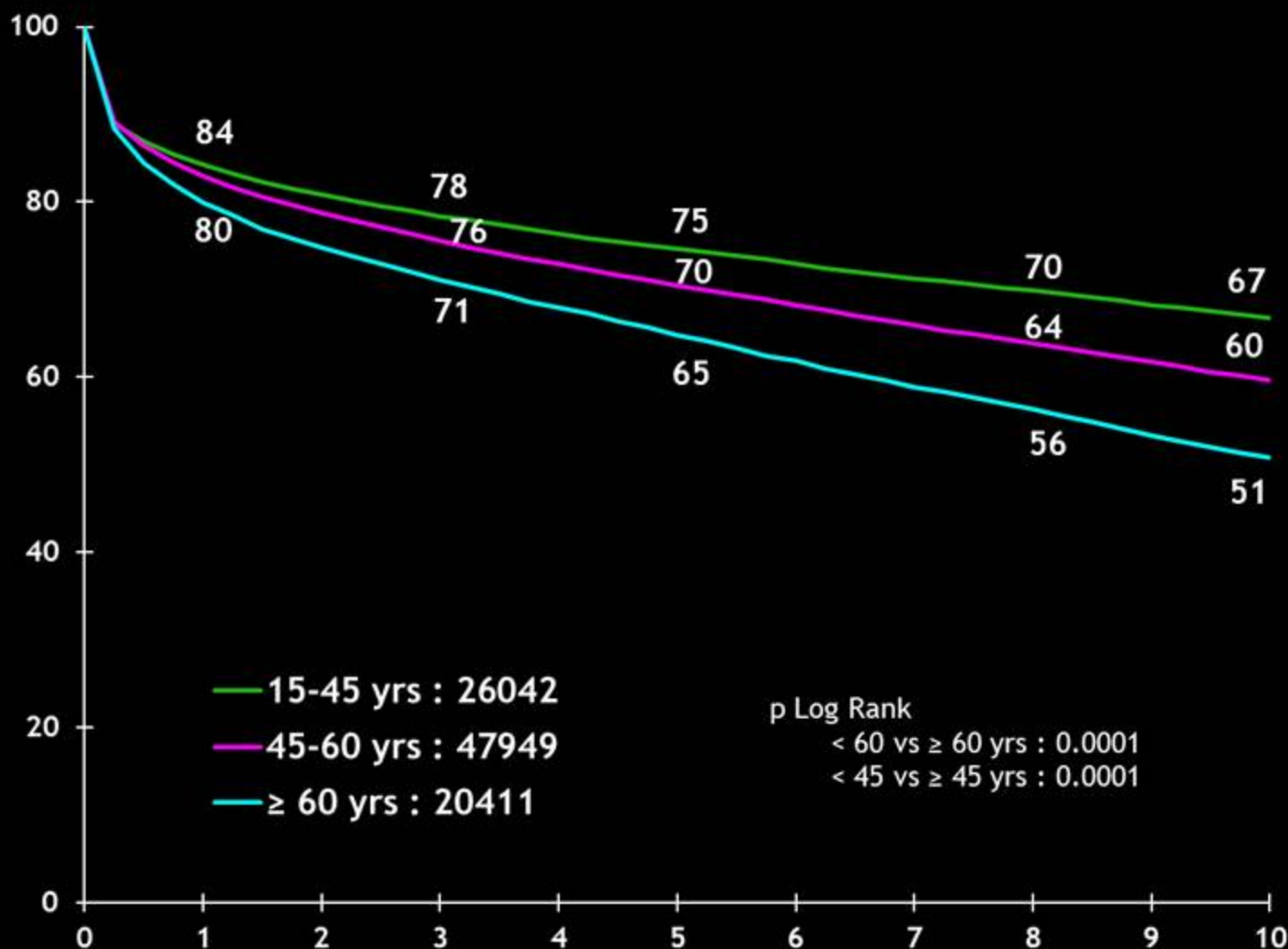


Figure 4.6 Median age of transplant recipients (deceased donor transplants)

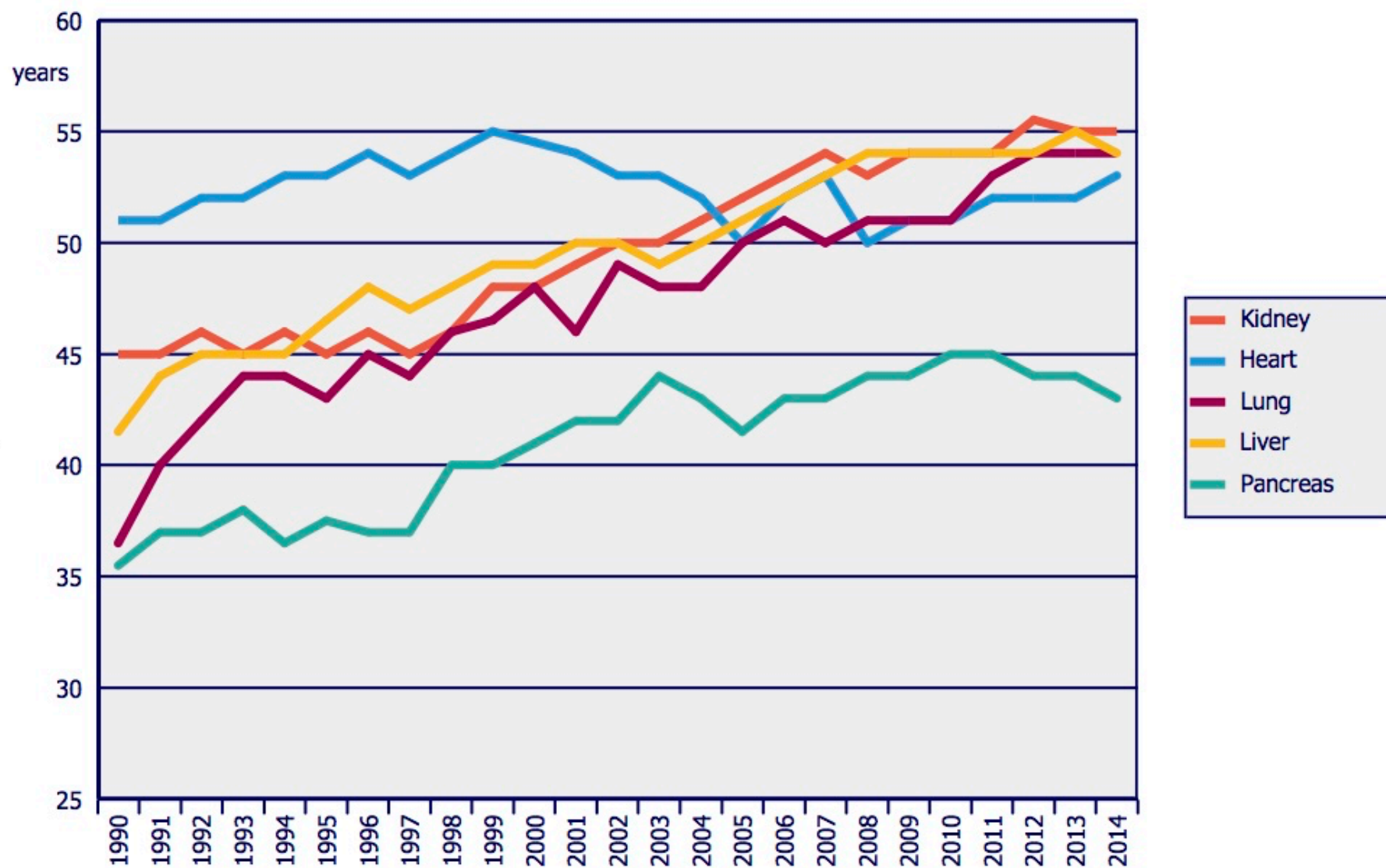
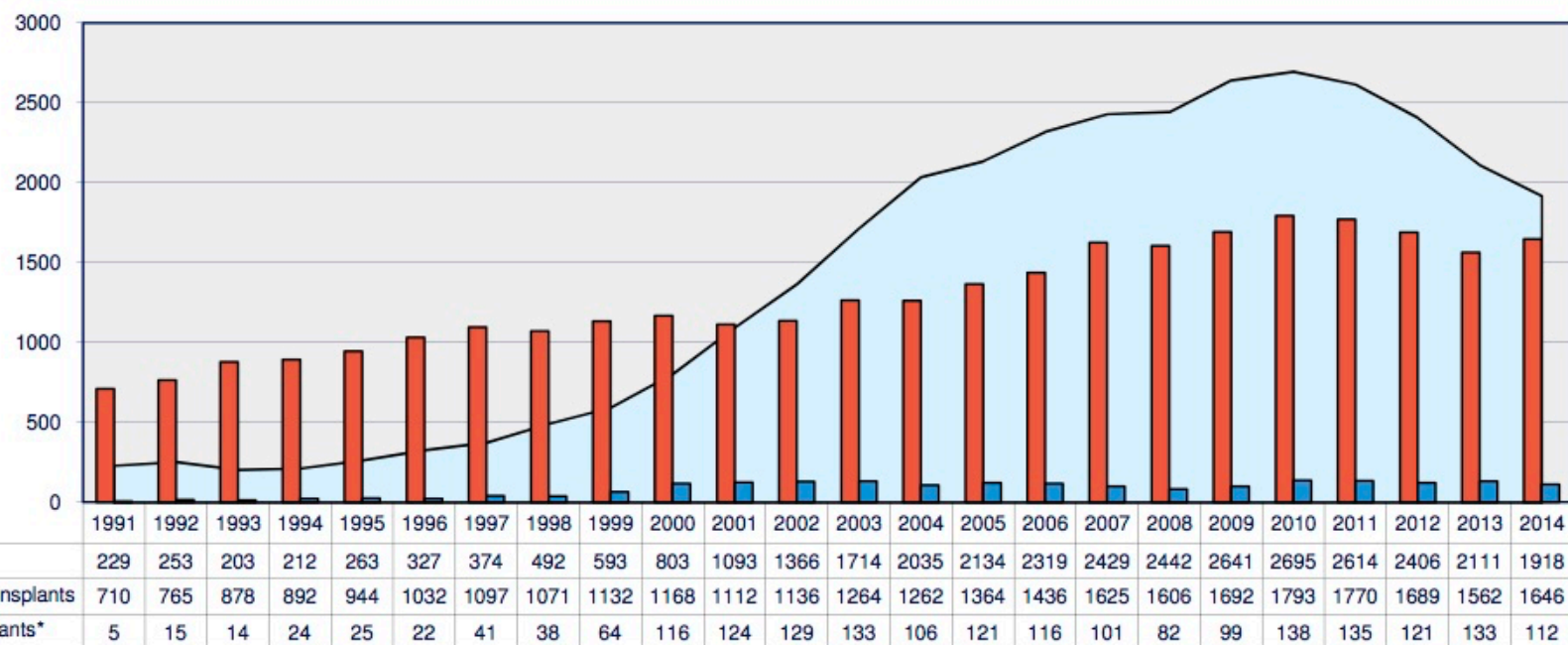


Figure 7.5 Dynamics of the Eurotransplant liver waiting list and liver transplants between 1991 and 2014



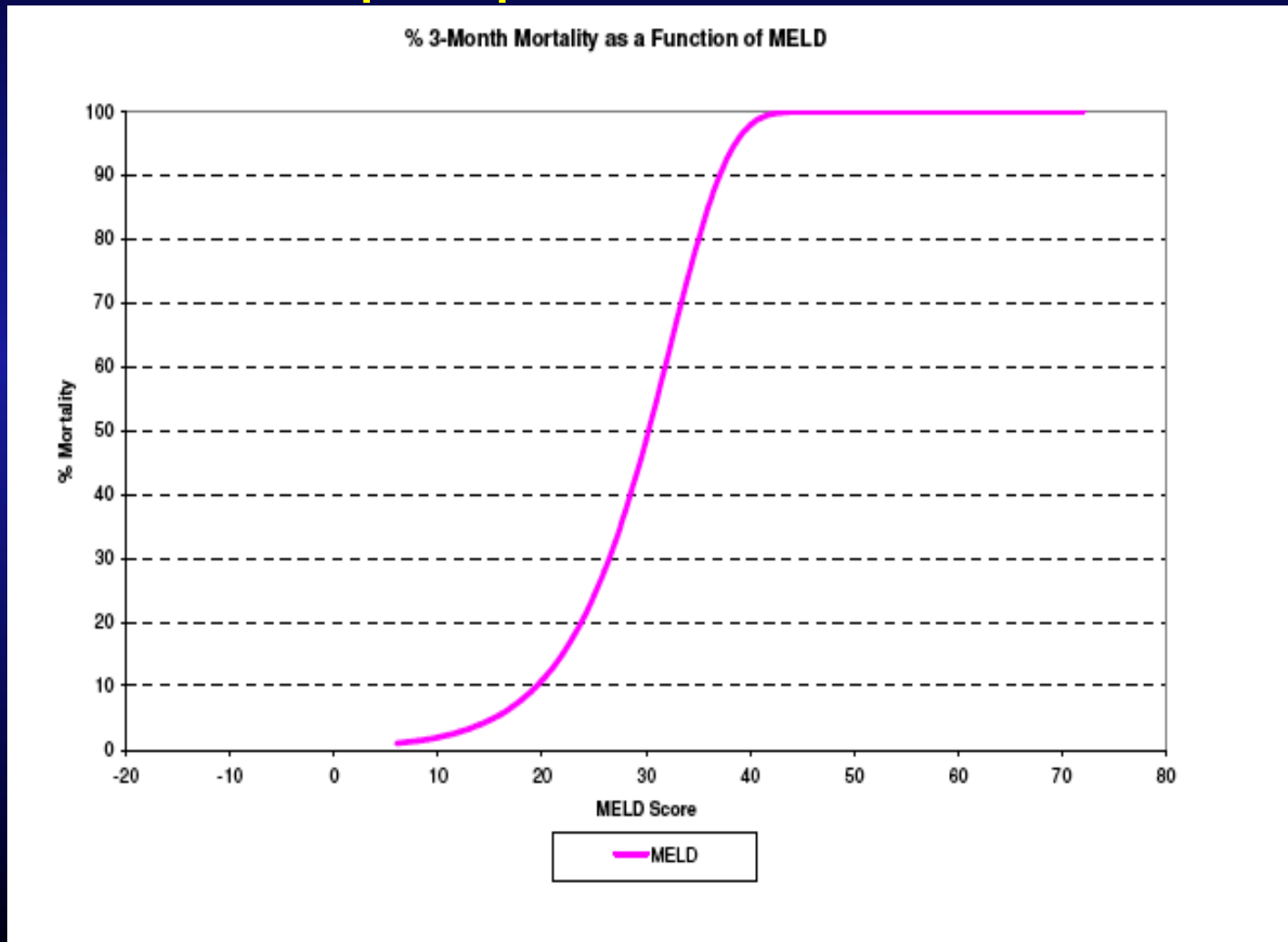
Model for End-stage Liver Disease (MELD)

Le MELD est un système de score développé à la Mayo Clinic, qui stratifie les patients souffrant de cirrhose selon leur probabilité de décès dans les 3 mois.

- 3 paramètres objectifs: bilirubine, créatinine, INR
- Formule: $0.957 \times \text{Log}_e(\text{créatinine mg/dL}) + 0.378 \times \text{Log}_e(\text{bilirubine mg/dL}) + 1.120 \times \text{Log}_e(\text{INR}) + 0.643$
- Le plus bas possible = MELD 6
- Le plus haut possible = MELD 40

Model for End-stage Liver Disease (MELD)

Graphique de mortalité



MELD

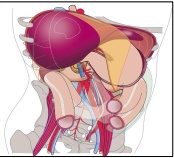
- ◆ Intérêt pour le patient d'avoir le score le plus haut
- ◆ Nécessité de mise à jour régulière
 - MELD < 10 : 1 an
 - MELD > 11: 3 mois
 - MELD > 18 : 1 mois
 - MELD > 25 : 1 semaine

MELD

Exceptions « standard »

- HCC Milan
- amyloidose familiale
- hyperoxalurie
- polykystose
- syndrome hepatopulmonaire
- syndrome porto pulmonaire
- Rendu Osler
- hemangioendotheliome

Exceptions « non standard »



DONATION

Number of deceased donors per million population

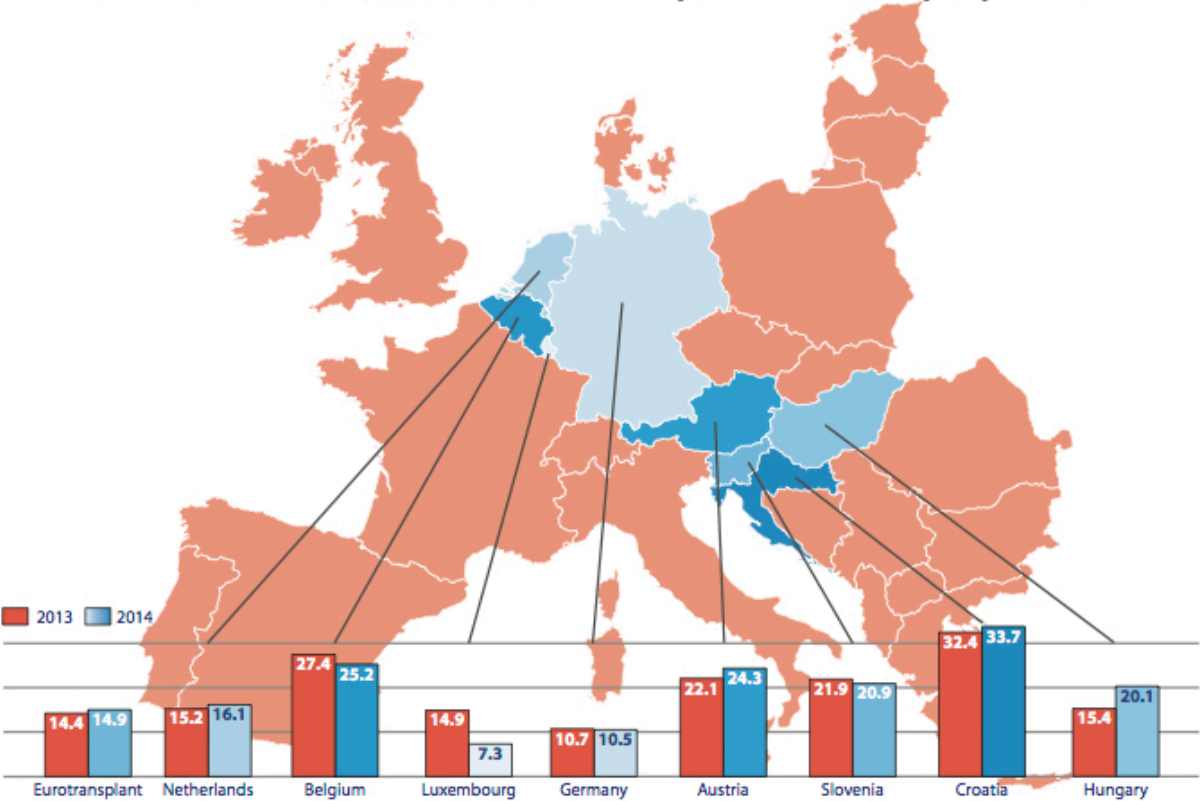


Table 4.1 **Number of deceased donors used for a transplant, by donor country, from 2010 to 2014**

Evolution of Donor Age

05/1968 – 12/2013

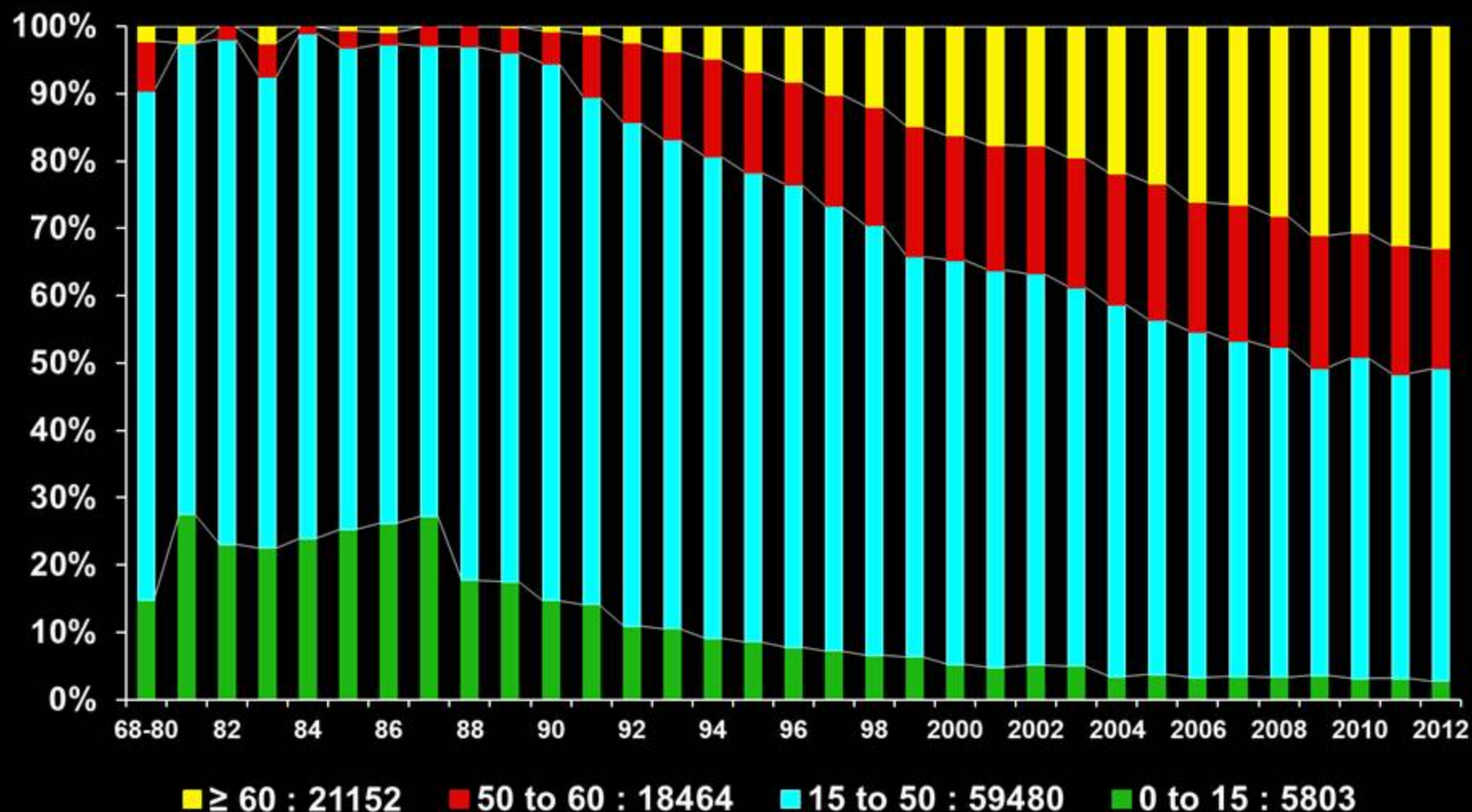
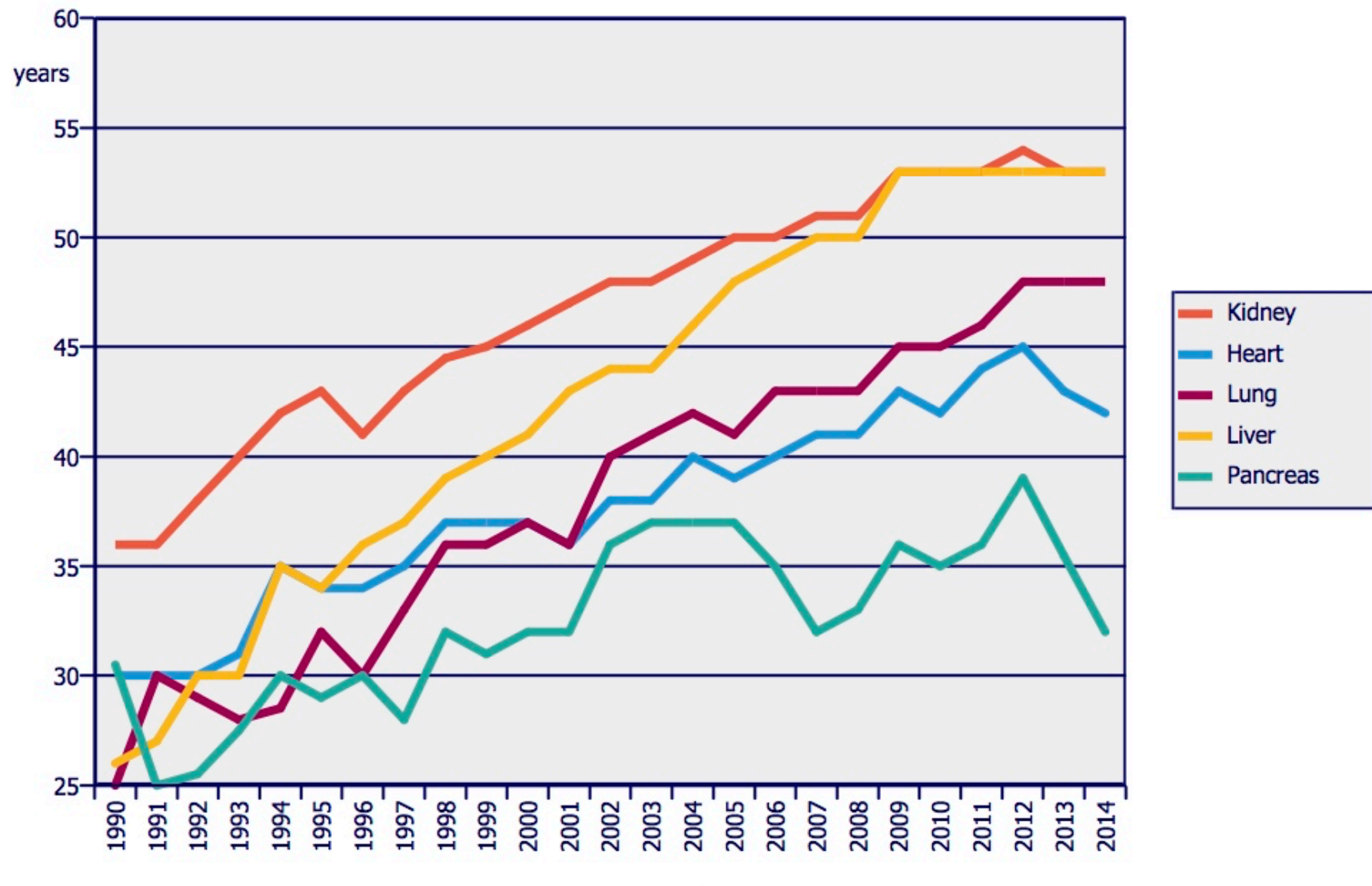
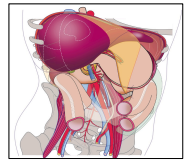


Figure 4.2

Median age of deceased donors used for a transplant in Eurotransplant





Controlled DCD: WI

