



**Human consumption of Lepidoptera in Africa :  
an updated chronological list of references (370 quoted!)  
with their ethnozoological analysis**

**La consommation humaine de Lépidoptères en Afrique :  
une liste chronologique actualisée des références (370 citées !)  
avec leur analyse ethnozoologique**

François MALAISSE<sup>1</sup> & Paul LATHAM<sup>2</sup>

**Résumé :** La consommation humaine d'insectes ou "lépidoptérophagie" connaît un intérêt croissant. Dans le présent article 370 références abordant ce thème pour l'Afrique sont citées. Des accès à cette information par ordre chronologique ainsi que par ordre alphabétique des noms d'auteurs sont fournies. Une liste systématique des noms scientifiques des espèces consommées en Afrique est encore établie. L'importance de l'information disponible pour divers groupes ethnolinguistiques est signalée. L'évolution des thèmes abordés est analysée et commentée.

Mots clés: Consommation, Lépidoptères, Afrique, Campéophagie.

**Abstract :** Human consumption of insects or « lepidopterophagy » is becoming increasingly important. In the present paper 370 references dealing with this subject in Africa are quoted. Access to this information is provided both, by chronological and alphabetic order of authors. A systematic list of scientific names of edible Lepidoptera in Africa is also provided. The importance of the information available for various ethnolinguistic groups is presented. The evolution of issues covered is analyzed and discussed.

Keywords : Consumption, Lepidoptera, Africa, Campeophagy.

## INTRODUCTION

The utilization of insects as a sustainable and secure source of animal-based food for the human diet has continued to increase in popularity in recent years (SHOCKLEY & DOSSEY, 2014). In particular, human consumption of Lepidoptera receives an increasing interest (MALAISSE *et al.*, 2015). Several terms have been suggested to describe this consumption, notably regarding caterpillars, "campeophagy" (MALAISSE, 2002, 2004; MALAISSE *et al.* 2015), "anthropolarviphagy of Lepidoptera" (RAMOS-ELORDUY *et al.*, 2011) and of "erucivory". However this last term is normally applied to animals, rather than humans (RAMADE, 2008).

Lepidoptera appeared some 220 million years ago. They are an Order with adults being named "butterflies" and "moths" and larvae named "caterpillars". Today about 180,000 Lepidoptera species are recognized; they belong to 128 families, of which 36 include species eaten by man, mostly as caterpillars, more rarely as chrysalises and exceptionally the abdomen of some moths and butterflies is eaten.

Regarding the Lepidoptera, the value of 228 edible species has been published by RAMOS ELORDUY Y CONCONI in 1997, out of a total of 1391 insects, that is to say 16.39%.

---

<sup>1</sup> Biodiversity and Landscape Unity, Liège University, Gembloux Agro-Bio Tech, Belgium. Email : [malaisse1234@gmail.com](mailto:malaisse1234@gmail.com)

<sup>2</sup> Blairgowrie, Scotland. Email : [paul@latham9.fsnet.co.uk](mailto:paul@latham9.fsnet.co.uk)

In 2013, the number of insect species eaten by man is given a value over 1900, of which 18 % were caterpillars (VAN HUIS *et al.*, 2013). In their recent paper, SHORKLEY & DOSSEY (2014) indicate that Lepidoptera take the second position, with 396 species having been identified. They represent 18.3 % of the total of insect species eaten by man and belong to 36 families. The family of Saturniidae takes the first place with 109 different species, that is to say 27.5 % of the Lepidoptera.

MALAISSSE *et al.* (2015) have calculated that the total number of Lepidoptera eaten by man probably exceeds 500 species, a large number of caterpillars being only known by their vernacular name or “campeonyme”. For some of them, photographs are available but these differ from species already named.

Information on the human consumption of Lepidoptera has been carried out at various time and in various forms.

Until the 1960s, the literature on insects in the diet of man was scattered through numerous books and journals devoted to travel, ethnology, geography, medicine and biology (OWEN, 1973). From time to time, the gregarious larvae of moths, particularly members of the Saturniidae, received some attention. It is evident that many people rely on a wide variety of insect species for nourishment.

More recently the consumption of insects has become a subject for study on its own.

For instance, MALAISSSE (2010) describes the diversity of ethnospecies - that is to say their campeonyms – recognized locally, as well as the corresponding Linnean species, when possible. According to the 146 references that are quoted, at least people of 114 ethnolinguistic units of Africa eat Lepidoptera.

Several banks of data concern the human consumption of insects, including Lepidoptera. For instance this is the case of Wageningen University (JONGEMA, 2015). Nevertheless information regarding non English literature in this data bank could be amplified. As far as Africa is concerned, we have listed 370 references, about 260 of which are in English, the majority of the rest being in French with a few in Portuguese, Spanish, German and Africaans.

The increasing interest devoted to this subject bears out the need to publish this information more widely. This is the aim of the present paper, which is a response to the consideration that ethnobotanists, ethnozoologists, anthropologists, and linguists have to struggle to record folk knowledge in remote part of the world.

## **LIST OF PAPERS AND BOOKS TAKING UP THE THEME OF HUMAN CONSUMPTION OF LEPIDOPTERA IN AFRICA**

### **1656**

- de Flacourt Etienne, 1658. *Histoire de la Grande Isle Madagascar*. [The text of this manuscript of 616 pages, dated of 15 March 1656 and property of Monsieur de Vogüé has been edited in two versions, in 1958 and in 1661. We have consulted the edition presented and annotated by Claude Alibert in 1995, see below].

### **1661**

- De Flacourt Etienne, MDCLXI. *Histoire de la Grande Isle Madagascar, composée par le Sieur DE FLACOURT, Directeur general de la Compagnie française de l’Orient, & Commandant pour sa Majesté dans ladit Isle & és Isles adjacentes. Avec vne relation de ce qui s’est passé és années 1655. 1656. & 1657. Non encor veuë par la premiere Impression*. Troyes, Nicolas Oudot.

### **1686**

- Simon van der Stel’s journal of its expedition to Namaqualand 1685-1686. [The text of this manuscript has been edited by Waterhouse in 1932, see below].

### **1840**

- Grout Charlotte 1857. Letter to her parents [letter quoted by J. Mark Scriber in 2011].

### **1857**

- Livingstone David 1857. *Missionary travels and researches in South Africa; including a sketch of sixteen years' residence in the interior of Africa, and a journey from Cape of Good Hope to Loanda on the West Coast, thence across the Continent, down the river Zambezi, to the Eastern ocean*. London, John Murray, 687 p.

#### 1881

- Serpa Pinto Alexandre Alberto da Rocha (de) 1881. *Comment j'ai traversé l'Afrique depuis l'Atlantique jusqu'à l'Océan Indien, à travers des régions inconnues*. Paris, Hachette, 2 volumes, 456 + 468 p. [ouvrage traduit de l'édition anglaise, collationnée sur le texte portugais par J. Belin de Launey].

#### 1885

- Simmonds P.L. 1885. *The animal resources of different nations, with mentions of some of the special dainties of various derived from the Animal Kingdom*. London, E. & F. Spon, 461 p. [voir p. 208-209, 347-375].

#### 1898

- Junod Henri Alexandre 1898. Les BaRonga. *Bull. Société Neuchâteloise de Géographie*, **10**, 411 p.

#### 1902

- Cole H. 1902. Notes on the Wagogo of German East Africa. *J. royal Anthropological Inst.*, **32**: 305-339.

#### 1903

- Baum Hugo 1903. Kunene-Sambezi Expedition. Berlin, Deutsche Kolonialgesellschaft, 593 p.

#### 1910

- Gillet Justin, Pâque Egide 1910. Plantes principales de la région de Kisantu, leur nom indigène, leur nom scientifique, leurs usages. Bruxelles, Ministère des Colonies, 120 p.

#### 1911

- Kassner Theo 1911. My journey from Rhodesia to Egypt, including an ascent of Ruwenzori and a short account of the route from Cape Town to Broken Hill and Lado to Alexandria. London, Hutchinson & Co, xiv + 309 p.

#### 1912

- Godwey C.C. 1912. On the utilisation of an indigenous silkworm (*Anaphe infracta* Wism.) in Uganda. *Ann. Ent. Res.* **3**: 269-274.
- Schmitz Robert 1912. Les Baholoholo (Congo belge). *Collection Monographies ethnographiques* (Bruxelles) **IX**: xxxii + 605 p. + ix planches + 1 carte.

#### 1913

- Tessmann Gunter 1913. *Die Pangwe. Völkerkundliche Monographie eines west-afrikanischen Negerstammes*. Berlin, E. Wasmuth, Band I: xxi + 275 p., Band II: 422 p.

#### 1914

- Swynnerton C.F.M. 1914. Note on the larvae of *Anaphe panda*, Boisd. *Transactions of the Entomological Society of London*, xxx-xxxii.

#### 1921

- Bequaert Joseph 1921. Insects as food. How they have augmented the food supply of mankind in early and recent times. *Nat. Hist. Journ., Amer. Mus. Nat. Hist.* **21**: 191-200.

#### 1924

- Osborn Chase Salmon 1924. *Madagascar: Land of the Man-eating tree*. New York, Republic Publishing Co, 443 p. [voir p. 322-325].

#### 1927

- Junod Henri Alexandre 1927. *The life of a South African Tribe*. London, 2<sup>nd</sup> ed. [Première édition: 2 volumes en 1912, 1913].

#### 1931

- Doke Clement Martyn 1931. *The Lambas of Northern Rhodesia: A study of their customs and beliefs*. London, Georges G. Harrap & Co, 408 p.
- Stayt Hugh A. 1931. *The Bavenda*. London, International Institute of African Languages & Cultures, 392 p.
- Torrend Jules 1931. *An English-Vernacular Dictionary of the Bantu-Botatwe Dialects of Northern Rhodesia*. Marianhill (Natal, R.S.A.), Marianhill Mission Press, viii + 3 + 649 p.

#### 1932

- Waterhouse Gilbert (Ed.) 1932. *Simon van der Stel's Journal of its expedition to Namaqualand 1685-6*. Dublin, Hodges, Figgis and Co, xxviii + 85 p.

#### 1933

- Duncan J.R. 1933. Native foods and culinary methods. *Native Affairs Department Annual*, **11**: 101-106.

#### 1935

- Trolli Grégoire 1935. *Les problèmes de l'alimentation du Noir au Congo Belge : viande et poisson*. Bruxelles, Foréami, 42 p.

#### 1936

- Bryden HenryAnderson 1936. *Wild life in South Africa*. London, George G. Harrap & Co, 282 p.

#### 1937

- Decary Raymond 1937. L'entomophagie chez les indigènes de Madagascar. *Bull. Soc. Entomologique France* **42**: 168-171.

#### 1938

- Masseguin (médecin-capitaine), Antonini (pharmacien-colonel) 1938. Les chenilles comestibles dans la Haute-Sangha. *Bull. Soc. Recherches congolaises* **25**: 133-145.

#### 1939

- Baião Domingos Vieira 1939. *Dicionário ganguela-português: lingua falada nas regioes do Cubango, Nhemba e Luchaze, provincia de Angola*. Lisboa, Centro de estudos filológicos.
- Beemer Hilda 1939. Notes on the diet of the Swazi in the protectorate. *Bantu Studies* **XIII**(3): 199-236.
- Richards Audrey Isabel 1939. *Land, labour and diet in Northern Rhodesia: An economic study of the Bemba tribe*. Oxford (UK): Oxford University Press for International African Institute, 425 p.
- Seydel Charles 1939. Contribution à l'étude de la biologie de la faune entomologique éthiopienne. *C. R. VII Congr. für Entomologie*, Berlin, vol. 2: 1308-1330.

#### 1940

- Harris W.Victor 1940. Some Notes on Insects as Food. *Tanganyika Notes and Records*, Dar es Salaam, **9**: 45-48.

#### 1941

- Bergier Emile 1941. *Peuples entomophages et Insectes comestibles. Etude sur les mœurs de l'Homme et de l'Insecte*. Avignon (France), Rullières Frères, 231 p.
- de Beaucorps Remi 1941. Les Basongo de la Luniungu et de la Gobari. Inst. royal colonial belge, Section Sc. morales et politiques, Mémoires, Coll. 8°, X(3) : 188 p.
- Williamson Jessie 1941. Nyasaland native foods. *Nyasaland Times*, 1-25.

#### 1942

- Golding F.D. 1942. The silkworms of Nigeria. *Farm and Forest* **3**: 35-40.

#### 1945

- Chinn M. 1945. Notes pour l'étude de l'alimentation des indigènes de la Province de Coquilhatville. *Ann. Soc. Belg. Méd. Trop.* **25**: 57-149.

#### 1946

- de Almeida António 1946. Crónica de etnografia colonial. Carne de invertebrados – Tabu alimentar dos nativos das colónias portuguesas. *Bol. Geral das Colónias* **22**, n° 249: 107-115.
- Tihon L. 1946. Contribution à l'étude du problème alimentaire indigène au Congo Belge. *Bull. Agric. Congo Belg.* **37**: 829-868.

#### 1947

- MacJannet M.B. 1947. Chokwe-English, English-Chokwe Dictionary and Grammar Lessons. Vila Luzo, Missão da Biula, 2<sup>nd</sup> ed.

#### 1950

- Biehler Edward 1950. A Shona Dictionary with an outline Shona grammar. Chishawasha – Salisbury (Southern Rhodesia), The Jesuit Fathers, 4<sup>th</sup> ed.

#### 1951

- Adriaens E.L. 1951. Recherches sur l'alimentation des populations du Kwango. *Bull. Agric. Congo Belg.* **42**: 227-270; 473-552.
- Bodenheimer Friedrich Simon 1951. *Insects as human food. A chapter of the ecology of man*. The Hague (The Netherlands), W. Junk, 352 p.
- Dartevelle Edmond 1951. Sur un Hespéride des environs de Léopoldville et remarques sur la valeur alimentaire des chenilles de Lépidoptères. *Lambillionea* **51**: 12-16, 18-20.

#### 1953

- Adriaens E.L. 1953. Note sur la composition chimique de quelques aliments mineurs indigènes du Kwango. *Ann. Soc. Belg. Méd. Trop.* **33**: 531-544.
- Cloudsley-Thompson J.L. 1953. Caterpillars eaten by a Zulu. *Entomologist* **86**: 51-52.
- Jackson Aaron P. 1953. Ample food without ploughing. Native Affairs Department Annual (NADA) **31**: 62-66.

#### 1954

- Thompson B. Preston 1954. Two studies in African nutrition. An urban and a rural community in Northern Rhodesia. *Rhodes-Livingstone Pap.* **24**: 1-57.

#### 1955

- Huttel Wladimir, Huttel Nancy 1955. Les arthropodes terrestres dans l'alimentation de l'indigène du Gabon. *Acta Trop.- Miscellana* **XII**(1): 67-68.
- Rougeot Pierre-Claude 1955. Les Attacides (Saturnidae) de l'Equateur Africain Français. Encyclopédie entomologique. Ed. Paul Lechevalier, Paris, **XXXIV**: 116 p. + xii planches.

#### 1956

- Holemans K., Rots O. 1956. *Etude alimentaire indigène dans le territoire de Feshi (Kwango, Congo belge)*. Académie royale des Sciences coloniales, Classe des Sciences Naturelles et Médicales. Mémoire in-8°. n.s ; 4(5): 37 p.
- Pinhey Elliot Charles Gordon 1956. The Emperor Moths of Eastern Africa. *Journal of the East Africa Natural History Society* 23(1): 1-62.

### 1958

- Bloomhill G. 1958. Africa à la carte. Some favourite dishes of the African gourmet. *Fr. World* (Nov.): 9-10.
- Crosse-Upcott A. Robin W. 1958. Ngindo famine subsistence. *Tanganyika Notes and Records*, Dar es Salaam, 50: 1-20.
- Merle (médecin, lieutenant-colonel) 1958. Des chenilles comestibles. *Notes africaines* 77: 20-23.

### 1959

- Bacoulergue Pierre, Bergot Jean 1959. L'alimentation rurale au Moyen Congo. Section Nutrition du Service commun de lutte contre les Grandes Endémies. Mâcon (France), Imprimerie Protat Frères, 72 p.
- Gaerdes Fritz 1959. Schädliche und nützliche Insekten in Südwestafrika. *South West Afrika Annual* 1959: 71-77.
- Hannan Michael 1959. Standard Shona Dictionary, compiled for the Southern Rhodesia Native Affairs Department, London, Macmillan.
- Quin P. J. 1959. *Food and feeding habits of the Pedi*. Johannesburg (South Africa). Wwatersrand University Press, 278 p. + 134 planches.
- White Charles Matthew Newton 1959. A preliminary survey of Luvale rural economy. *The Rhodes-Livingstone papers* 29: xiv + 1-58.

### 1960

- dos Santos E. 1960. Sobre a « medicina » e Magia dos Quicos. Lisboa, Junta de Investigações do Ultramar. Estudos, Ensaios e Documentos 90, 226 p.
- Nunes José António Pereira 1960. A alimentação na Baixa de Cassange. *Anais Inst. Med. Trop.*, Lisboa, XVII: 1/2: 283-435.

### 1961

- Gomez P.A., Halut R., Collin A. 1961. Production de protéines animales au Congo. *Bull. agric. Congo* 52(4): 689-815.
- Lambrechts Albert, Bernier Georges, avec la collaboration de Falyse J. et Hubin Colette 1961. Enquête alimentaire et agricole dans les populations rurales du Haut-Katanga (1957-1958). *Problèmes sociaux congolais, Mémoires*, 236 p. [a aussi été publié en 1959, Elisabethville (Congo), Centre d'Etude des Problèmes sociaux indigènes et en 1960 Elisabethville (Congo), Imprimerie Imbelco].

### 1962

- Rougeot Pierre Claude 1962. Les Lépidoptères de l'Afrique noire occidentale – Attacidés. I.F.A.N., *Initiations africaines* 14(4): 214 p.
- Scudder Thayer 1962. *The ecology of the Gwembe Tonga*. Kariba Studies, vol. II, The Institute for African Studies, Univ. of Zambia, Manchester Univ. Press, Manchester (U.K.), xxi + 274 p. + 21 tableaux.

### 1963

- Ene J.Chunwke 1963. *Insects and man in West Africa*. Ibadan Univ. Press, Ibadan (Nigeria).
- Paulian Renaud 1963. Coeliades libeon Druce, chenille comestible du Congo. *Bull. Inst. Rech. Sci. Congo* 2: 5-6.
- Velcich G. 1963. Mopani worms. *BaNtu* 10: 604-605.

#### 1964

- Denis Jacques 1964. Ngombe Ya Tumba. Village Hoto du Haut-Kwango. *Bull. Soc. belge Etudes géographiques (SOBEG)* **29**(1): 133-167.

#### 1967

- Miracle Marvin P., 1967. *Agriculture in the Congo Basin. Tradition and change in African rural economies*. Madison, The University of Wisconsin, 355 p.

#### 1968

- Reynolds Barrie 1968. The material culture of the peoples of the Gwembe Valley. Kariba Studies. Vol. III. Manchester Univ. Press, Manchester (U.K.), 262 p.

#### 1969

- Leleup Narcisse, Daems Hugo 1969. Les chenilles alimentaires du Kwango. Causes de leur raréfaction et mesures préconisées pour y remédier. *J. Agric. trop. Bot. Appl.* **16**(1): 1-21.
- Malaisse François, Malaisse-Mousset Madeleine, Evrard Alphonse 1969. Aspects forestiers et sociaux des pullulations de *Tunkubiu*. Faut-il détruire ou protéger *Elaphrodes lactea* (Gaede) (Notodontidae)? *Bull. Trim. C.E.P.S.I.* **86**: 27-36.

#### 1970

- Cuypers Jan-B. 1970. L'alimentation chez les Shi. *Ann. Mus. R. Afr. Cent.*, Tervuren, Sci. hum. **67**: xii + 249 p. + 20 planches.
- Heymans Jean-Claude, Evrard Alphonse 1970. Contribution à l'étude de la composition alimentaire des insectes comestibles de la Province du Katanga. *Probl. Soc. Congolais (Bull. Trimestr. C.E.P.S.I.)* **90-91**: 333-340.
- Malaisse-Mousset Madeleine, Malaisse François, Watula C. (1970). Contribution à l'étude de l'écosystème forêt claire (Miombo). Note 2 : Le cycle biologique d'*Elaphrodes lactea* (Gaede) et son influence sur l'écosystème « Miombo ». *Trav. Serv. Sylv. Univ. Off. Congo* **8** : 3-10.
- Pearson E. 1970. Ngangela-English dictionary. Cuernavaca (Morelos, Mexico).

#### 1971

- De Groote V.A. 1971. *Tables de composition alimentaire pour la République démocratique du Congo*. Concordia, Kinshasa, 32 p.

#### 1972

- Palmer Eve, Pitman Norah 1972. *Trees of Southern Africa covering all known indigenous species in the Republic of South Africa, South-West Africa, Botswana, Lesotho & Swaziland*. A.A. Balkema, Cape Town (R.S.A.), vol. 1, 703 p.
- Pinhey Elliot Charles Gordon 1972. The Emperor Moths of south and south central Africa. Cape Town (R.S.A.), Struik, 150 p.

#### 1973

- Van den Berg M.A., Catling H.D., Vermeulen J.B. 1973. The distribution and seasonal occurrence of Saturniidae (Lepidoptera) in Transvaal. *Phytophylactica* **5** : 111-114.

#### 1974

- Malaisse François, Verstraeten Charles, Bulaimu Tabu 1974. Contribution à l'étude de l'écosystème Forêt claire (Miombo). Note 3 : Dynamique des populations d'*Elaphrodes lactea* (Gaede) (Lep. Notodontidae). *Rev. Zool. Afr.* **88**(2): 286-310.
- Van den Berg M.A. 1974 a. Biological studies on *Cirina forda* (West.) (Lepidoptera : Saturniidae), a pest of wild seringa trees (*Burkea africana* Hook.). *Phytophylactica* **6**: 61-62.
- Van den Berg M.A. 1974 b. Pouoogmotte (Lepidoptera : Saturnidae) van die Nasionale Krugerwildtuin. *Koedoe* **17**: 159-172.

## 1975

- Bahuchet Serge 1975. Ethnozoologie des pygmées Babinga de la Lobaye, République centrafricaine. In : R. Pujol (éd.) *L'homme et l'animal. Premier colloque d'ethnozoologie*. Paris, Institut International d'Ethnoscience, 53-61.
- Chavunduka D.M. 1975. Insects as a source of protein to the African. *Rhodesia Sci. News* **9**: 217-220.
- Newman James L. 1975. Dimensions of Sandawe diet. *Ecol. Food Nutr.* **4** : 33-39.
- Pagezi Hélène 1975. Les interrelations homme-faune de la forêt du Zaïre. In : R. Pujol (éd.): *L'homme et l'animal. Premier colloque d'ethnozoologie*. Paris, Institut International d'Ethnoscience, 63-88.
- Taylor Ronald L. 1975. Butterflies in my stomach: Insects in human nutrition. Santa Barbara, Woodbridge Press Publishing Company, 224 p.

## 1976

- Grivetti Louis Evan 1976. *Dietary Resources and Social Aspects of Food Use in a Tswana Tribe*. Unpublished Ph. D. Dissertation, University of California, Davis.
- Le Clerc A.M., Ramel P., Acker P. 1976. Note au sujet de la valeur nutritionnelle d'une chenille alimentaire : *Anathepanda infracta*. *Ann. Nutr. Aliment.* **21**: 69-72.
- Santos Oliveira J.F., Passos de Carvalho J., Bruno de Sousa R.F.X., Madalena Simao M. 1976. The nutritional value of four species of insects consumed in Angola. *Ecol. Food Nutr.* **5**: 91-97.
- Silow Carl-Axel 1976. *Edible and other insects of Mid-Western Zambia – Studies in Ethno-Entomology II*. Uppsala (Sweden): Institutionen för Allmän och Jämförande Ethnografi. Occ. Papers V, 223 p.
- Van Voorthuizen Evert G. 1976. The mopane tree. *Botswana Notes & Records* **8**: 223-230.

## 1977

- Southwood T.R.E. 1977. Entomology and mankind. *Amer. Scient.* **65**: 30-39.

## 1978

- Grivetti Louis Evan 1978. Nutritional success in a semi-arid land: examination of the Tswana agro-pastoralists of the eastern Kalahari, Botswana. *Amer. J. Clin. Nutr.* **31** : 1204-1220.
- Jacquot André, 1978. *Textes Laadi (Kongo)*. Travaux et documents de l'ORSTOM. 523 p. ISBN 2-7099-0527-2, [485-487, 489-491].
- Malaisse François 1978. The Miombo ecosystem. In *Tropical forest ecosystems*, UNESCO/UNEP, 589-606.

## 1979

- Grivetti Louis Evan 1979. Kalahari agro-pastoral-hunter-gatherers: the Tswana example. *Ecol. Food Nutr.* **7**: 235-256.
- Lee Richard Borshay 1979. *The !Kung San. Men, women, and work in a foraging society*. Cambridge (U.K.), Cambridge University Press, 556 p.

## 1980

- Malaisse François, Parent Guy 1980. Les chenilles comestibles du Shaba méridional (Zaïre). *Les Nat. Belges* **61**(1): 2-24.
- Motte Elisabeth 1980. Les plantes chez les Pygmées Aka et les Monzombo de la Lobaye (Centrafrique). Etude comparative chez des chasseurs-cueilleurs et des pêcheurs-cultivateurs dans un même milieu végétal. Paris, SELAF (Société d'études linguistiques et anthropologiques de France) / Agence de Coopération culturelle et technique. Bibliothèque SELAF **80-81-82**: 573 p.
- Thiry J. 1980. Observations sur les Chenilles de quelques *Saturnidae* du Shaba (Zaïre) (Lepidoptera). *Rev. Zool. afr.* **94**(2): 327-332.
- Roulon-Doko Paulette 1980. Le savoir des Gbaya de Centrafrique sur les chenilles comestibles, leur comportement et leur habitat. *Bull. de liaison de la SEZEB (Paris)* **8**: 20-25.



## 1981

- Tango Muyay 1981. *Les insectes comme aliments de l'homme*. CEEBA Publications, Série II **69**, Bandundu (Zaire), 177 p.

## 1982

- Dreyer J.J., Wehmeyer A.S. 1982. On the nutritive value of mopane worms. *S. Afr. J. Sci.* **8**: 33-35.
- Gardiner Brian O.C. 1982. A Silkmother Reeler's Handbook. *Amateur Entomologists' Society*, **12**, 255 p.
- Pagezy Hélène 1982. Seasonal hunger as experimented by the Oto and the Twa of a Ntomba village in the equatorial forest. *Ecol. Food Nutr.* **12**(3): 139-153.
- Scholtz C.H. 1982. Trophic ecology of Lepidoptera larvae associated with woody vegetation in a savanna ecosystem. *South Afr. Nat. Sci. Programmes report* **55**, v + 25 p.

## 1983

- Daeleman Jan, Pauwels Luc 1983. Notes d'ethnobotanique Ntandu (Kongo). *Africana Linguistica* **9**: 149-256
- Malaisse François 1983. Trophic structure in Miombo (Zambezi tropical woodland). *Ann. Fac. Sc. Lubumbashi* **3**: 119-162.

## 1984

- De Conconi Julieta Ramos Elorduy, Moreno Jose Manuel Pino, Mayaudon Carlos Marquez, Valdez Fernando Rico, Perez Manuel Alvarado, Prado Esteban Escamilla, Rodriguez Hector Bourges 1984. Protein content of some edible insects in Mexico. *J. Ethnobiol.* **4**: 61-72.

## 1985

- Bahuchet Serge 1985. *Les pygmées Aka et la forêt Centrafricaine*. Selaf, Paris, 640 p.
- Gade Daniel W. 1985. Savanna woodland, fire, protein and silk in highland Madagascar. *J. Ethnobiol.* **5**(2): 109-122.
- Stromgaard Peter 1985. A subsistence society under pressure: The Bemba of Northern Zambia. *Africa* **55**(1): 39-59.

## 1986

- Landry Stephen V., DeFoliart Gene R., Sunde Milton L. 1986. Larval protein quality of six species of Lepidoptera (Saturniidae, Sphingidae, Noctuidae). *J. Econ. Entomol.* **79**: 600-604.

## 1987

- Brandon Heather 1987. The snack that crawls. *Int. Wildl.* March-April : 16-21.
- Brandon Heather 1987. Revoilà le temps des chenilles. *Géo* **113**(septembre): 136-145.
- de Conconi Julieta Ramos Elorduy 1987. *Los insectos como fuente de proteínas en el futuro*. (2da ed.). Editorial Limusa, Mexico, 148 p.
- Kodondi Kule Kuto, Leclercq Michel, Gaudin-Harding Francine 1987a. Vitamin Estimations of Three Edible Species of Attacidae Caterpillars from Zaïre. *Intern. J. Vitam. Nutr. Res.* **57** : 333-334.
- Kodondi Kule Kuto, Leclercq Michel, Bourgeay-Clausse Michèle, Pascaud Annick, Gaudin-Harding Francine 1987b. Intérêt nutritionnel de chenilles d'Attacidés du Zaïre : composition et valeur nutritionnelle. *Cah. Nutr. Diét.* **22**(6): 473-477.
- Nkouka Etienne 1987. Les insectes comestibles dans les sociétés d'Afrique centrale. Muntu, Rev. Scientifique et culturelle du CICIBA, Libreville, **6**: 171-178.
- Sharpe B. 1987. *Agricultural commercialisation, nutrition and health in Northern Province : A review of recent research and policy options*. Mpika (Zambia), IRDP (SMC)/NFNC.

## 1988

- Ashiru M.O. 1988a. The food value of the larvae of *Anaphe venata* Butler (Lepidoptera : Notodontidae). *Ecol. Food Nutr.* **22**: 313- 320.
- Ashiru M.O. 1988b. The frequency distribution of eggs and larvae of *Anaphe venata* Butler (Lepidoptera : Notodontidae) on *Triplochyton scelorxylon* K.Schum. *Insects Science Applications* **9**(5): 587-592.
- Evans A., Young K. 1988. *Gender issues in household labour allocation: The transformation of a farming system in Northern Province, Zambia*. London, Report to ODA's Economic and Social Research Committee.
- Pagezy Hélène 1988. Contraintes nutritionnelles en milieu forestier équatorial liées à la saisonnalité et la reproduction : réponses biologiques et stratégies de subsistance chez les Ba-Oto et les Ba-Twa du village Nzalekenga (Lac Tumba, Zaïre). Thèse de doctorat, Univ. de Droit, d'Economie et des Sciences d'Aix-Marseille, Fac. des Sciences et Techniques de Saint Jérôme.

#### 1989

- Ashiru M.O. 1989. Silkworms as money spinners: *Anaphe* versus *Bombyx* . *The Nigerian Field*, **54**(1-2): 3-10.
- DeFoliart Gene R. 1989. The human use of insects as food and animal feed. *Bull. Entomol. Soc. Am.* **35**: 22-35.
- Katya Kitsa 1989. Contribution des insectes comestibles à l'amélioration de la ration alimentaire au Kasai-Occidental. *Zaïre-Afrique* **239**: 511-519.
- Gauslaa Y. 1989. Management and regeneration of tropical woodlands with special references to Tanzanian conditions. A literature review. *Lidia* **2**: 37-112.
- Sekhwela M.B.M. 1989. The nutritive value of Mophane bread – Mophane insect secretion (Mophote or Maboti). *Botswana Notes and records* **20**: 151-154.

#### 1990

- Takeda Jun 1990. The dietary repertory of the Ngandu people of the tropical rain forest: an ecological and anthropological study of the subsistence activities and food procurement technology of a slash-and-burn agriculturist in the Zaire River basin. *African Study Monographs*, Suppl. **11**: 1-75.
- Turk D. 1990. Leguminous trees as forage for edible caterpillars. *Nitrogen-Fixing-Tree-Research-Reports* **8**: 75-77.
- Wilson Kenneth Brockington 1990. Ecological dynamics and human welfare: a case study of population, health and nutrition in southern Zimbabwe. Unpublished PhD. Thesis, University College, London, U.K., 664 p.

#### 1991

- Conconi Julieta Ramos Elorduy de 1991. *Los insectos como fuente de proteínas en el futuro*. (2da ed.). Editorial Limusa, Mexico, 148 p.
- DeFoliart Gene R. 1991 a. Edible caterpillars: A potential agroforestry resource ? *Food Insects Newsl.* **4**(2): 3-4.
- DeFoliart Gene R. 1991 b. Forest management for the protection of edible caterpillars in Africa. *Food Insects Newsl.* **6**: 1-2.
- DeFoliart Gene R. 1991 c. Insect fatty acids: Similar to those of poultry and fish in their degree of unsaturation, but higher in the polyunsaturables. *Food Insects Newslett.* **4**: 1-4.
- Holden Stein 1991. Edible caterpillars -- A Potential Agroforestry Resource? *Food Insects Newsl.* **4**(2): 3-4.
- Vane-Wright R.I. 1991. Why not eat insects? Guest Editorial. *Bull. Inst. Res.*, **81**: 1-4.

#### 1992

- Bahuchet Serge (Ed.) 1992. Dans la forêt d'Afrique centrale. Les Pygmées Aka et Baka. Peter-Selaf, Paris, 425 p.
- Benhura M.A.N., Chitsiku I.C. 1992. Seasonal variation in the food consumption patterns of Mutarambara district of Zimbabwe. *The Central African Journal of Medicine*, **38**(1): 8-13.

- Kankonda B., Wetsi Lambert 1992. Données préliminaires sur les chenilles comestibles de Kisangani et ses environs (Zaïre). *Ann. Fac. Sci. UNIKIS* **8**: 113-119.
- Mbemba Fundu, Remacle José 1992. *Inventaire et composition chimique des aliments et des denrées alimentaires traditionnels du Kwango-Kwilu au Zaïre*. Namur (Belgique): Presses universitaires de Namur, 80 p.
- Munthali S.M., Mughogho D.E.C. 1992. Economic incentives for conservation : bee-keeping and Saturniidae caterpillar utilization by rural communities. *Biodiversity and Conservation* **1**: 143-154.

### 1993

- Adamolekun B. 1993. *Anaphe venata* entomophagy and seasonal ataxic syndrome in southwest Nigeria. *Lancet* **341**: 629.
- Créac'h Paul. *Se nourrir au Sahel. L'alimentation au Tchad 1937-1939*. Pour mieux connaître le Tchad. L'Harmattan, 296 p.
- Fazoranti J.O. & Ajiboye D.O. 1993. Some edible insects of Kwara State, Nigeria. *Am. Entomol.* **39** : 113-116.
- Joiris DaouVéronique 1993. Calendrier des Pygmées Baka au Cameroun. In Serge Bahuchet (Ed.) "Situation des populations indigènes des forêts denses humides. Rapport DGXI (Deuxième partie, 3. Afrique centrale, V. Les chasseurs-cueilleurs, a. Techniques et subsistance).
- Oberprieler Rolf 1993. The emperor moths of Namibia. Ekogilde, Hartbeespoort (R.S.A.), ix + 91 p.
- Sallé Georges, Boussim Joseph Issaka, Raynal-Roques Aline, Brunck F. 1993. Le Karité : Etat de nos connaissances et perspectives de recherche. Physiologie des arbres et des arbustes en zones arides et semi-arides (Eds. Riedacker A., Dreyer E., Pafadnam C., Joly H., Bory G.). Groupe d'étude de l'arbre. Observatoire du Sahara et du Sahel. John Libbey Eurotext, Montrouge (France): 427-433.
- Seitz Stefan 1993. Pygmées d'Afrique centrale. Editions Peeters/Selaf, Langues et cultures africaines 17, Paris, 357 p.
- Takeda Jun, Sato Hiroaki 1993. Multiple subsistence strategies and protein resources of horticulturalists in the Zaïre basin: the Ngandu and the Boyela. In : Hladik C.M., Hladik A., Linares O.F., Pagezy H., Semple A., Hadley M. (Eds.). *Tropical forests, people and food*. Carnforth (U.K.): Unesco and The Parthenon Publ. Group. MAB Series **13**: 497-504.

### 1994

- Hobane P.A. 1994a. An annotated bibliography of the mopane worm and its uses. CASS, Harare.
- Hobane P.A. 1994b. The urban marketing of the mopane worm: The case of Harare. CASS, Harare.
- Mkanda F.X., Munthali S.M. 1994. Public attitudes and needs around Kasungu National Park, Malawi. *Biodiversity and Conservation* **3**: 29-44.
- Moore Henrietta L., Vaughan Megan 1994. *Cutting down trees. Gender, nutrition, and agricultural change in the Northern Province of Zambia, 1890-1990*. Portsmouth (N.H., U.S.A.)/London, James Currey/Lusaka, University of Zambia Press, 278 p.
- Saunders Mel, 1994. Saving the mopane worm. *The Washington Post*, Sept. 1: 33.
- Styles C. 1994. There's big value in mopane worms. *Farmer's Weekly*, July 22 199', 20-23.
- Zinzombe I.M., George S. 1994. Larval lipid quality of Lepidoptera: *Gonimbrasia belina*. *Botswana Notes and Records* **26**: 167-173.

### 1995

- Bani G. 1995. Some aspects of entomophagy in the Congo. *Food Insects Newsl.* **8**(3): 4-5.
- Ferreira Anton 1995. Saving the Mopane Worm. South Africa's wiggly protein snack in danger. *Food Insects Newsl.* **8**: 6.
- DeFoliart Gene R. 1995. Edible insects as minilivestock. *Biodiv. Conserv.* **4**: 306-321.

- Flacourt Etienne (de) 1995. *Histoire de la Grande Ile Madagascar*. Edition annotée et présentée par Claude Alibert. Paris, Karthala et Inalco, 656 p.
- Hladik Annette 1995. *Valorisation des produits de la forêt dense autres que le bois d'œuvre*. Rapport de mission. République centrafricaine, Projet Ecofac, Groupement AGRECO/CIRAD-forêt, Paris, 57 p.
- Hladik Annette, Hladik Claude Marcel 1995. RCA, forêt de Ngotto: les produits forestiers, des ressources à développer. *Canopée* 4: 7-8.
- Hobane P.A. 1995. AMANCIMBI : The gathering, processing, consumption & trade of edible caterpillars in Bulilimangwe District. Centre for Applied Social Sciences, Univ. of Zimbabwe, Harare, 33 p.
- Kitanishi Koichi 1995. Seasonal changes in the subsistence activities and food intake of the Aka hunter-gatherers in Northeastern Congo. *African Study Monographs*, 16(2): 73-118.
- Long Simon Andrew 1995. *Producing beer; Agricultural livelihoods and Commodities in Serenje District of Zambia*. PhD Thesis in Social Anthropology, London, School of Economic and Political Science., 155 p.
- Lowore Janet D., Abbot Paddy G., Meke G. 1995. Community utilization of non-timber forest products: an example from the miombo woodland of Malawi. Second Crop Science Conference for Eastern and Southern Africa, Blantyre, Malawi.
- Malaisse François 1995. Diversité et importance des chenilles dans l'alimentation des populations du Zaïre. *Tropicultura* 13: 72-73.
- Mbata Keith Japhet 1995. Traditional Uses of Arthropods in Zambia. *Fiid Insects Newsl.* 8(3): 1, 5-7.
- McGregor J. 1995. Gathered produce in Zimbabwe's communal areas changing resource availability and use. *Ecol. Food Nutr.* 33: 163-193.
- Meke G.S. A preliminary study to appraise the importance of edible caterpillars and potential for expanding this resource in some Ngoni villages around Chimaliro forest Reserve. Zomba, FRIM Report.
- Mughogho D.E.C., Munthali S.M. 1995. Ecological interaction between *Gonimbrasia belina* (L.) and *Gynanisa maia* (L.), and the impact of fire on forage preferences in a savanna ecosystem. *Afr. J. Ecol.* 33: 84-87.
- Oberprieler Rolf 1995. *The emperor moths of Namibia*. Hartbeestpoort (R.S.A.), Ecogilde, 91 p.
- Styles C., 1995. The mopane worm: too profitable for its own good? Our Living World.

## 1996

- Allotey Joseph, Mpuchane S.F., Gashe B.A., Siame Anthony B., Teferra Getachew. 1996. Insect pests associated with stored mopane worm, *Imbrasia belina* Westwood (Lepidoptera: Saturniidae) in Botswana. In B.A. Gashe & S.F. Mpuchane (Eds.) "Proceedings of the first multidisciplinary Symposium on Mopane", Gaborone Botswana, NORAD, 18 June 1996.
- Ankanda D. 1996. Contribution de la République du Congo. In Nations Unies – Commission économique pour l'Afrique – Réunion ad hoc du groupe d'experts sur l'accroissement de la production et de l'utilisation des ressources alimentaires non conventionnelles comme source d'aliments en Afrique. Addis-Abébé, 5 p.
- Ashipala J., Garoes T.M., Flower C.A. 1996. Mopane caterpillar resource utilization and marketing in Namibia. In C. Flower, G. Wardell-Johnson & Jamieson A. (Eds.) "Management of mopane in Southern Africa", chapter 13: 72-78.
- Bell J.C., McGeoch Melodie A. 1996. An evaluation of the pest status and research conducted on phytophagous Lepidoptera on cultivated plants in South Africa. *African Entomology* 4(2): 161-170.
- Bossard Eric 1996. Quelques notes sur l'alimentation et les apports traditionnels occultes en Angola. *Garcia de Orta, Sér. Bot.*, Lisboa, 13(1): 7-41.
- Clarke Jeanette, Cavendish William, Coote Claire 1996. Rural households and miombo woodlands: use, value and management. In : Campbell E. (ed.) « The miombo in transition :

- woodlands and welfare in Africa. Center for International Forestry Research (CIFOR), Bogor (Indonesia), 101-135.
- Cunningham Tony 1996. Saturniid subsidy : cash and protein from edible caterpillars of Zambesian woodlands. In Campbell Bruce (ed.) « *The Miombo in transition : woodlands and welfare in Africa*. CIFOR, Bogor (Indonesia), 107-108.
  - Dithlogo M. 1996. The ecology of *Imbrasia belina* (Westwood) in North Eastern Botswana. In B.A. Gashe & S.F. Mpuchane (Eds.) “Proceedings of the first multidisciplinary Symposium on Mopane”, Gaborone Botswana, NORAD, 18 June 1996.
  - Imamura-Hayaki Kaoru, (1996). Gathering activity among the central Kalahari San. *African Study Monographs*, suppl. **22**, 47-66.
  - Letsie L. 1996. A gendered socio-economic study of Phane. In B.A. Gashe & S.F. Mpuchane (Eds.): Phane, Proc. 1<sup>st</sup> Multidisciplinary Symp.. Depmt Biol. Sc., Gaborone, 104-121.
  - Marais Eugene 1996. Omaungu in Namibia : *Imbrasia belina* (Saturniidae: Lepidoptera) as a commercial ressource. In B.A. Gashe & S.F. Mpuchane (Eds.): Phane, Proc. 1<sup>st</sup> Multidisciplinary Symp. Depmt Biol. Sc., Gaborone , 23-31.
  - Moruakgomo M.B.W. 1996. Commercial utilisation of Botswana’s veld products – the economics of phane : the dimensions of phane trade. In B.A. Gashe & S.F. Mpuchane (Eds.): Phane, Proc. 1<sup>st</sup> Multidisciplinary Symp. Depmt Biol. Sc., Gaborone , 32-45.
  - Mpuchane S.F., Taligoola H.K., Gashe B.A. 1966. Fungi associated with *Imbrasia belina*, an edible caterpillar. *Botswana Notes and Records* **28**: 193-197.
  - Muleba Micheal, Mulenga James, Legay Jacques, Matera Joseph 1996. Baseline data on mushrooms and caterpillars. Miombo Project, PRA Report – Kamifungo and Buitikili, Zambia. Stencil Report, 4 p.
  - Nonaka Kenichi 1996. Ethnoentomology of the Central Kalahari San. *African Study Monographs* suppl. **22**: 29-46.
  - Ohiokpehai O., Bulawayo B.T., Mpotokwane S., Sekwati B., Bertinuson A. 1996. Expanding the uses of phane, a nutritionally rich local food. In B.A. Gashe & S.F. Mpuchane (Eds.): Phane, Proc. 1<sup>st</sup> Multidisciplinary Symp.. Depmt Biol. Sc., Gaborone , 84-103.
  - Seignobos Christian, Deguine Jean-Philippe, Aberlenc Henri-Pierre 1996. Les Mofu et leurs insectes. *Journ. d’Agric. trad. et de Bota. Appl.*, **38**(2): 125-187.
  - Siame Anthony B., Mpuchane S.F., Gashe B.A., Allotey Joseph, Teferra Getachew 1996. Nutritional qualities of mophane worms, *Imbrasia belina* (Westwood) and the microorganisms associated with the worms. In B.A. Gashe & S.F. Mpuchane (Eds.): Phane, Proc. 1<sup>st</sup> Multidisciplinary Symp.. Depmt Biol. Sc., Gaborone , 80-83.
  - Styles C.V. 1996. The biological ecology of *Imbrasia belina* (Saturniinae, Saturniidae) with reference to its behaviour, physiology, population dynamics, impact within mopane veld and utilisation within South Africa. In B.A. Gashe & S.F. Mpuchane (Eds.): Phane, Proc. 1<sup>st</sup> Multidisciplinary Symp. Depmt Biol. Sc., Gaborone, 9-13.
  - Styles C.V., Skinner J.D. 2003. Possible factors contributing to the exclusion of saturniid caterpillars (mopane worms) from a protected area in Botswana. *African journal of Zoology* **34**: 276-283.
  - Van Huis Arnold 1996. The traditional use of arthropods in sub Saharan Africa. *Proc. Exper. & Appl. Entomol., N.E.V. Amsterdam* **7**: 3-20.
- 1997**
- Adamolekun B., McCandless D.W., Buttlerworth R.F. 1997. Epidemic of seasonal ataxia in Nigeria following ingestion of the African silkworm *Anaphe venata*: role of thiamine deficiency? *Metab. Brain Dis.* **12**: 251-258.
  - Bizé Véronique 1997. Les insectes, une ressource alimentaire d’avenir ? *Insectes* **106**(3):10-13.
  - DeFoliart Gene R. 1997. An overview of the role of edible insects in preserving biodiversity. *Ecol. Food Nutr.* **36**(2-4): 109-132.

- Frears S.L., Chown Steven L., Webb P.I. 1997. Behavioural thermoregulation in the mopane worm (Lepidoptera: Saturniidae). *Journ. of thermal biology* **22**: 325-330.
- Gardiner Alan John, Niemeyer Eva Maria 1997. Mid-Zambezi valley, insects as food source. CIRAD Report, Harare, 21 p.
- Gashe B.A., Mpuchane S.F., Siame Anthony B., Allotey Joseph, Teferra Getachew 1997. The microbiology of phane, an edible caterpillar of the emperor moth, *Imbrasia belina*. *J. Food Protection* **60**(11): 1376-1380.
- Gaston Kevin J., Chown Steven L., Styles C.V. 1997. Changing size and changing enemies: the case of the mopane worm. *Acta Oecologia* **8**(1): 21-26.
- Jermini Maro, Bryan Frank L., Schmitt Rudolf, Mwandwe Clement, Mwenya Jonathan, Zyuulu M.H., Chilufya Esnat N., Matoba Abel, Hakalima Aves T., Michael Mwanza, 1997. Hazards and critical control points of food vending operations in a city in Zambia. *J. Food Protection* **60**(3): 288-299.
- Latham Paul 1997. Edible caterpillar programme, Bas Zaire. *Bull. Amateur Entomol. Soc.* **56**: 54-56.
- Makungwa Stephen D. 1997. Assessment of grass, honey, and edible caterpillars in some forest reserves in Malawi. In: S.A. Crafter, J. Awimbo & A.J. Broekhoven (Eds.) : Non-timber forest products : value, use and management issues in Africa, including examples from Latin America, Proceedings of a workshop held in Nam Moru, Kenya, 8-13 May, 1994, Nairobi (Kenya) I.U.C.N., 37-40.
- Malaisse François 1997. *Se nourrir en forêt claire. Approche écologique et nutritionnelle*. Presses agronomiques de Gembloux/C.T.A., 384 p.
- Oberprieler Rolf 1997. Classification of the African Saturniidae : The quest for natural groups and relationships. Abstracts of the Inaugural Conference on African Lepidoptera. Nairobi & Kakamega (Kenya), 1-8 May 1997.
- Wiggins D.A. 1997. Fluctuating asymmetry in *Colophospermum mopane* leaves and oviposition preference in an African silk moth *Imbrasia belina*. *Oikos* **79**: 484-488.
- Yagi S. 1997. Case Study of Edible Insects in Enzaro Village, Kenya. ><http://ss.jircas.affrc.go.jp/engpape/annualreprot/1997/divisions/cpphdivision1.htm><

## 1998

- Abe'Ele Mbranzo'o P. *La pêche chez les Badjoué. Interaction entre les techniques, le temps, les terroirs et les ressources prélevées à Doumo (Périphérie de la Réserve de Faune du Dja, est-Cameroun)*. Second rapport semestriel, septembre 1998. rapport Projet Forêts communautaires, FUSAGx, Gembloux, 80 p.
- Green Stuart V. 1998. The Bushman as an Entomologist. *antenna-London* **22**(1) : 4-8.
- Menzel Peter, d'Aluisio Faith 1998. *Man eating bugs : The art and science of eating insects*. Berkeley (California, U.S.A.), Ten Speed Press, 192 p.
- Motshegwe S.M., Holmbach J., Yeboah S.O. 1998. General properties and the fatty acid composition of the oil from the mopane caterpillar, *Imbrasia belina*. *J. Amer. Oil Chem. Soc.* **7**(6): 725-728.
- Onigbinde A.O., Adamolekun B. 1998. The nutritive value of *Imbrasia belina* Lepidoptera Saturniidae (madora). *Centr. Afr. Journ. Med.* **44**(5): 125-127.
- Ramos-Elorduy Julieta 1998. Les petites bêtes ... pas si bêtes que ça. *Spore* **77** (octobre 1998): 6.
- Robert C. 1998. Long-term costs of the mopane worm harvest. *Oryx* **32**: 6-8.
- Roulon-Doko Paulette 1998. *Chasse, cueillette et culture chez les Gbaya de Centrafrique*. L'Harmattan (Paris), 540 p.

## 1999

- Agbidye F.S., Tyokever J. 1999. Insects in the diet of the Tiv people of Benue State. A preliminary survey of Kwande LGA of Benue State. 30<sup>th</sup> Ann. Scient. Conf., Nutrition Soc. Nigeria, Enugu.
- Frears S.L., Chown S.L., Webb P.L. 1999. Temperature dependence of feeding behavior in the mopane worm (Lepidoptera). *Journal of Thermal Biology* **24**(4): 241-244.
- Glew R.H., Jackson D., Sena L., VanderJadt D.J., Pastuszyn A. & Millson M. 1999. *Gonimbrasia belina* (Lepidoptera : Saturniidae): A nutritional food source rich in protein, fatty acids, and minerals. *American Entomologist*, **winter 1999**: 250-253.
- Klok C.J., Chown S.L. 1999. Assessing the benefits of aggregation: thermal biology and water relations of anomalous Emperor Moth caterpillars. *Functional Ecology* **13**(3): 417-427.
- Latham Paul 1999a. Edible caterpillars and their food plants in Bas Congo. Latham edit., Forneth (U.K.), 38 p.
- Latham Paul 1999b. Edible caterpillars of the bas Congo region of the Democratic Republic of the Congo. *antenna-London* **23**(3): 134-139.
- Mbata Keith Japhet, Chidumayo Emmanuel N. 1999. Emperor moth caterpillars (Saturniidae = Attacidae) for a snack: Traditional processing of edible caterpillars for home consumption and for sale in the Kopa area of Zambia. *The Food Insects Newsletter* **12**(1): 1-5.
- Rebe M. 1999. *The sustainable use of mopane worms as a harvestable protein source for human consumption: Local perceptions*. Unpublished M. Sc. Thesis, University of Pretoria.
- Tabuna Honoré 1999. Le marché des Produits Forestiers Non Ligneux de l'Afrique centrale en France et en Belgique. Produits, Acteurs, Circuits de distribution et Débouchés actuels. *CIFOR, Occasional Papers* **19**: 1-37.
- Tchatat Mathurin, collaboration Ndoye Ousseynou, Nasi Robert 1999. Produits forestiers autres que le bois d'œuvre (PFAB) : Place dans l'aménagement durable des forêts denses humides d'Afrique centrale. Projet FORAFRI, CIRAD, 103 p.
- Zitzmann G. 1999. Multiple use and livelihood strategies in Mopane woodland. The case of Ditolady, north-east district Botswana. Schriftenreihe des Institutes für Internationale Forst- und Walzwirtschaft. Nr. 2 TU Dresden.

## 2000

- Akinnawo O., Ketiku A.O. 2000. Chemical composition and fatty acid profile of edible larva of *Cirina forda* (Westwood). *Afr. J. Biomedical Res.* **3**(2): 93-96.
- Dube Shadreck, Chandra P., Muzungu W. 2000. Aerobic sporeformers in Madora, an edible caterpillar in sold in Zimbabwean markets. *Zimbabwean Journal of Science and Technology* **2**: 5-9.
- Illgner P., Nell E., (2000). The geography of edible insects in sub-Saharan Africa : a study of the mopane caterpillar. *The Geographical Journ.*, **166**(4): 336-351.
- Latham Paul 2000. Chenilles comestibles et leur plantes hôtes de la Province du Bas-Congo. Latham edit., Forneth (U.K.), 40 p.
- Mpuchane S., Gashe B.A., Allotey Joseph, Siame Anthony B., Teferra Getachew, Dithlhogo M. 2000. Quality deterioration of phane, the edible caterpillar of an emperor moth, *Imbrasia belina*. *Food Control* **11**(6): 453-458.
- Munyuli Bin Mushambanyi T. 2000. Etude préliminaire orientée vers la production des chenilles consommables par l'élevage des papillons (*Anapha infracta* : *Thaumetopoeidae*) à Lwiwo, Sud-Kivu. République Démocratique du Congo. *Tropicicultura* **18**(4) : 208-211.
- Nishimune T., Watanabe Y., Okazaki H., Akai H. 2000. Thiamin is decomposed due to *Anaphe* spp. entomophagy in seasonal ataxia in Nigeria. *J. Nutr.* **130**(6): 1625-1628.
- Odeyemi O.M., Fasoranti O.J. 2000. Distribution of the Emperor moth caterpillar, *Cirina forda* (Lepidoptera: Saturniidae) on sheatnut tree Canopy at Ilorin, Nigeria. *Nigerian J. Entomol.* **17**: 59-67.
- Simpanya F., Allotey Joseph, Mpuchane S.F. 2000. A mycological investigation of phane, an edible caterpillar of an emperor moth, *Imbrasia belina*. *Journ. Food Prot.* **63**(1): 137-140.

- VanDyk John 2000. Nutritional value of various insects per 100 grams. <http://www.ent.iastate.edu/misc/insectnutrition.html>

## 2001

- Gondo Tendayi 2001. Mopane worm utilization and rural livelihoods: The case of Matobo District. Master thesis. Department of rural and urban planning, University of Zimbabwe.
- Greyling M., Van D.E.R., Grobler J.P., Wessels D.C.J. 2001. Allozyme variation in two populations of the Mopane worm, *Imbrasia belina* (Sturniidae), and the effect of developmental stage and staggered generations. *South African Journal of Animal Science* **31**: 15-24.
- Mbata Keith Japhet, Chidumayo Emmanuel N., Lwatula C.M., Mwondela K., Mwanbazi M. & Nagwo N. 2001. *Developing community based conservation and sustainable exploitation of edible caterpillars in Mpika District*. Report funded by Pilot Environmental Support Programme, Ministry of Environment and Natural Resources, Lusaka, 80 p.
- Toms R.B. 2001. The mopane worm and the wonder of metamorphosis. *Easy Science* **4**: 6-8.

## 2002

- Akinnawo O.O., Abatan M.O., Ketika A.O. 2002. Toxicological study of the larva of *Cirina forda* Westwood. *Afr. Journ. Biomed. Res. Ibadan, Biomedical Communications Group* **5**(1-2): 43-46.
- Chidumayo Emmanuel N. & Mbata Keith Japhet 2002. Shifting cultivation, edible caterpillars and livelihoods, in the Kopa area of Northern Zambia. *Forests, Trees and Livelihoods* **12**(1): 175-193.
- Dzono L. 2002. Contribution à l'étude des insectes comestibles du Congo, aspects socio-économiques. Mémoire de Diplôme d'Ingénieur de développement rural. Université de Brazzaville, Congo.
- Gumbo Davidson J. 2002. *Harvest the amacimbi and the mopane woodlands will take care of themselves: the social and economic implications of commercializing mopane worms in the Bulilimangwe Rural District in Zimbabwe*. Thesis, Clark University, 83 p.
- Kozanayi W., Frost Peter 2002. Marketing of mopane worm in Southern Zimbabwe. Internal report: Mopane Woodlands and Mopane worm: Enhancing rural livelihoods and resource sustainability, DFID Project N° R7822 . University of Zimbabwe, Institute of Environmental Studies, University of Zimbabwe.
- Latham Paul 2002. Chenilles comestibles du Bas-Congo. Projet Développement Intégré de l'Armée du Salut, R.D. Congo, 25 p.
- Mapunzu Monzabe 2002. Contribution de l'exploitation des chenilles et autres larves comestibles dans la lutte contre l'insécurité alimentaire et la pauvreté en République démocratique du Congo. FAO. Rome URL : <http://www.foa.org/docrep/007/j3463f/j3463f00.HTM>
- Mbata Keith Japhet, Chidumayo Emmanuel N., Lwatula C.M. 2002. Traditional regulation of edible caterpillar exploitation in the Kopa area of Mpika District in northern Zambia. *J. Insect Conservation* **6**(2): 115-130.
- Mignon Jacques 2002. L'entomophagie: une question de culture? *Tropicultura* **20**(3): 151-155.
- Moussa J.B. Les chenilles comestibles du Congo: Intérêt alimentaire et circuits de commercialisation: Cas de Brazzaville. FAO. Rome URL : <http://www.foa.org/docrep/007/j3463f/j3463f00.HTM>
- Tchago Bouimon, Moupeng Bédjaoué 2003. Les produits alimentaires en période de soudure dans la zone sahélo-soudanienne. Cas des régions du lac de Fitri et des lacs de Léré (Tchad). Mega-Tchad, 1-7.

## 2003

- Allotey J., Mpuchane S. 2003. Utilization of useful insects as a food source. *African Journ. Of Food, Agriculture, Nutrition and Development* **3**: 1-8.



- Balinga Michel Philippe 2003. Les chenilles et larves comestibles dans la zone forestière du Cameroun. Rapport de Consultation. FAO. Rome URL : <http://www.foa.org/docrep/007/j3463f/j3463f00.HTM>
- Frost Peter G.H. 2003. Internal Annual report 2002/2003 : Mopane Woodlands and Mopane worm : Enhancing rural livelihoods and resource sustainability, DFID Project N° R7822 . University of Zimbabwe, Institute of Environmental Studies.
- Gardiner Alan John 2003. Internal final report: Mopane woodlands and the mopane worm: Enhancing rural livelihoods and resource sustainability, DFID Project N° R7822. The domestication of mopane worms (*Imbrasia belina*). Veld Products Research & Development, Gaborone, Botswana.
- Gardiner Alan John, Gardiner E.M. 2003. Edible insects. Part 1. Preparation of species from Mushumbi Pools, Zimbabwe. *African Entomology*, **11**(1): 125-127.
- Hardouin Jacques, Mahoux Guy 2003. Zootechnie d'insectes. Elevage et utilisation au bénéfice de l'homme et de certains animaux. BEDIM, numéro spécial, 149 p.
- Latham Paul 2003. Les chenilles comestibles et leurs plantes nourricières dans la Province du Bas-Congo. Canterbury (U.K.), Mystole Publications, 60 p.
- Malaisse François, Demesmaecker Anne, Matera Joseph, Wathelet Bernard, Lognay Georges 2003. Enfin « Tubambe » dévoile son identité ! *Hadraperthe ethiopica* Bethune-Baker) (Limacodidae), une chenille comestible des forêts claires zambéziennes. *Biotechnol. Agron. Soc. Environ.* **7**(2): 67-77.
- Malaisse François, Lognay Georges 2003. Les chenilles comestibles d'Afrique tropicale. Colloque les « insectes » dans la tradition orale. Motte-Florac E. et Thomas J.M.C. (Eds.), Peeters, Leuven (Belgique), *Ethnoscience* 11, SELAF 407, 279-302.
- Mbata Keith Japhet, Chidumayo Emmanuel N. 2003. Traditional values of caterpillars (Insecta : Lepidoptera) among the Bisa people of Zambia. *Insect Science and its Application* **23**(4): 341-354.
- Mignot Jean-Michel 2003. Les arthropodes selon les Masa Bugudum (Nord Cameroun): classifications, savoirs et usages. Une introduction. Colloque les « insectes » dans la tradition orale. Motte-Florac E. et Thomas J.M.C. (Eds.), Peeters, Leuven (Belgique), *Ethnoscience* 11, SELAF 407, 105-121.
- Mushongahande M. 2003. Mopane worm annual report: Mopane woodlands and the mopane worm: Enhancing rural livelihoods and resource sustainability, DFID Project N° R7822. Forestry commission of Zimbabwe.
- N'Gasse Georges 2003. Contribution des chenilles/larves comestibles à la réduction de l'insécurité alimentaire en République centrafricaine. FAO. Rome URL : <http://www.foa.org/docrep/007/j3463f/j3463f00.HTM>
- Stack Jayne, Dorward Andrew, Gondo Tendayi, Frost Peter, Taylor Frank, Kurebgaseka Nyarai 2003. Mopane worm utilisation and rural livelihoods in Southern Africa. Paper presented at International Conference on rural livelihoods, Forest and Biodiversity, 19-23 May, 2003, Bonn, Germany.
- Toms R.B., Thagwana M.P., Lithole K.D. 2003. The Mopane worm – Indigenous knowledge in the classroom. <http://www.scienceinafrica.co.za/2003/june/mopane.htm>
- van Huis Arnold 2003. Insects as food in Sub-Saharan Africa. *Insect Sci. Applic.* **23**(3): 163-185.

## 2004

- Adeduntan S.A., Bada F.A. 2004. Socio-economic importance of local silkworm (*Anaphe venata*) to rural dwellers in Ondo State, Nigeria; Abstract, 35<sup>th</sup> Ann. Conference Entomological Society Nigeria, Federal Univ. Akure, 7.
- Anonyme 2004. Contribution des insectes de la forêt à la sécurité alimentaire. L'exemple des chenilles d'Afrique centrale. F.A.O., Produits forestiers non ligneux. Document de Travail N°1, 107 p.
- Balinga Michel Philippe, Mapunzu Paul Mongabe, Moussa Jean-Baptiste, Ngasse Georges 2004. *Contribution des insectes de la forêt à la sécurité alimentaire: L'exemple des chenilles d'Afrique centrale*. Produits forestiers non ligneux, Document de travail N°1, Roma (Italy), F.A.O., 107 p.

- Finke M.D. 2004. Nutrient content of Insects. *In Encyclopedia of Entomology, Organic value, Recovery Solutions (OVR SOL)*, Dordrecht, Springer.
- Malaisse François 2004. Campeophagy : a state of knowledge report. *Geo-Eco-Trop* **26**(1) [2002]: 37-56.
- Mbata Keith Japhet, Chidumayo Emmanuel N., Lwatula Celestina M. 2004. Traditional regulation of edible caterpillars exploitation in the Kopa area of Mpika district in Northern Zambia. *J. Insect Conservation* **6**(2): 115-130.
- Morris Brian 2004. Insects and human life. Oxford, Berg Publ., 317 p. ISBN 9781859738474
- N'Gasse Georges, 2004. Annexe 2 : Tableau récapitulatif des chenilles comestibles de la forêt de Ngotto et leur arbres hôtes. *In « Contribution des insectes de la forêt à la sécurité alimentaire : l'exemple des chenilles d'Afrique centrale »*. Département des Forêts, Produits Forestiers Non Ligneux, Document de travail, N°1, Rome, F.A.O.
- Nyakudya T.T. 2004. Determination of the nature and level of contamination of dried larvae of the moth, *Imbrasia belina* (Mopane worms) by microorganisms. Submitted in partial fulfillment of the requirements for the bachelor of science honours degree in Biological sciences. Department of Biological sciences, Faculty of Science, University of Zimbabwe.
- Pharithi M.T., Suping S.M., Yeboah S.O. 2004. Variations of the fatty acid composition in the oil from larval stages of the emperor moth caterpillar (*Imbrasia belina*). *B. Chem. Soc. Ethiopia* **18**: 67-72.
- Sabah Caroline (Coordination) 2004. Des cultures qui racontent une histoire. Des insectes et des hommes – Ethnoentomologie. Museum, Rhône – Le département. 124 p.
- Vantomme Paul, Göhler Daniela, N'Deckere-Ziangba François 2004. Contribution of forest insects to food security and forest conservation; the example of caterpillars in Central Africa. ODI Wildlife Policy Briefing. N°3.

## 2005

- Amadi E.N., Ogbalu O.K., Barimalaa I.S., Pius M., 2005. Microbiology and nutritional composition of an edible larva (*Buanaea alcinoe*) of the Niger delta. *Journ. of Food Safety* **25**: 193-197.
- Dixon Sarah 2005. Edible caterpillars and their food plants in Bas Congo, Democratic Republic Congo. *Edible caterpillars in Bas Congo* **8**: 1-3.
- Fromme Alison 2005. Edible Insects. Smithsonian National Zoological Park, Zoogoer, **34**(4) <http://www.nationalzoo.si.edu/publications/zoogoer/2005/4/edibleinsects/cfm>
- Frost Peter G.H. 2005. A guide to the sustainable use of mopane worms. Institute of Environmental Studies, University of Zimbabwe, Harare.
- Malaisse François 2005. Human consumption of Lepidoptera, Termites, Orthoptera and Ants in Africa. Ecological implications of minilivestock. Potential of insects, rodents, frogs and snails. Paoletti M.G. (Ed.), Science Publ., Enfield (U.S.A.), 175-230.
- Marcot Bruce G. Congo caterpillars. EPOW-Ecology Picture of the Week. 14-20 February 2005. [http://taos-telecommunity.org/EPOW/EPOW-Archive\\_2005/EPOW-050214.h](http://taos-telecommunity.org/EPOW/EPOW-Archive_2005/EPOW-050214.h)
- Maviya Johnson, Gumbo Davison J. 2005. Incorporating traditional national resource management techniques in conventional natural resources management strategies: A case of mopane worms (Amacimbi) management and harvesting in the Buliliamamangwe District, Zimbabwe. *Journal of Sustainable Development* **7**(2): 95-107.
- Mbétid-Bessane Emmanuel 2005. Commercialisation des chenilles comestibles en République Centrafricaine. *Tropicultura* **23**(1): 3-5.
- Ndoye O., Awono A. 2005. The markets of Non Timber Forest Products in the province of Equateur and Bandundu, Democratic Republic of Congo, Congo Livelihood improvement and food security project. CIFOR.
- Toms R.B., Thagwana M.P. 2005. On the trail of missing mopane worms. Science in Africa. <http://scienceinAfrica.co.za/2005/january/mopane.htm>

## 2006

- Banjo A.D., Lawal O.A., Songonuga E.A. 2006. The nutritional value of fourteen species of edible insects in Southwestern Nigeria. *Afric. J. Biotechnology* **5**(3): 298-301.
- Ghazoul J. 2006. *Mopane woodlands and the mopane worm: Enhancing rural livelihoods and resource sustainability*. Final Technical report, Forest Research Programme, DFID Project: R. 7822. London, Department for International Development, 119 p.
- Hara Esther, 2006. An investigation of factors influencing the abundance of edible caterpillars in Kopa's chiefdom, Mpika district, Zambia. Master of Science in Geography. Lusaka, The University of Zambia, 62 p.
- Omotoso O.T., 2006. Nutritional quality, functional properties and antinutrient composition of the larva of *Cirina forda* (Westwood) (Lepidoptera: Saturniidae). *J. Zhejiang Univ. Sci. B*, **7**(1): 51-55.
- Schabel Hans G. 2006. *Forest entomology in East Africa: Forest insects of Tanzania*. Dordrecht (The Netherlands), Springer Netherlands, 328 p.
- Tchatat Mathurin, Ndoye Ousseynou 2006. Etude des produits forestiers non ligneux d'Afrique centrale: Réalités et perspectives. *Bois et Forêts des Tropiques* **298**(3): 27-39.

## 2007

- Akpalu Wisdom, Muchapondwa Edwin, Zikhali Precious 2007. Can the restrictive harvest period policy conserve mopane worms in Southern Africa? A bio-economic modeling approach. University of Cape Town / Göteborg University, Working paper 65, 12 p.
- Ghazoul J., Gardiner A., Poole N., Frost P., Gondo T., Kozanayi W., Stacks J. 2007. *Domesticating caterpillars helps the very poor in South Central Africa: Mopane worm farming, a new mini livestock system. New technologies, new processes, new policies: Tried-and-tested and ready-to-use results*, Research into Use Programme, FRP 41. London, Department for International Development, Aylesford, Kent, 46 p.
- Himoonde Twaambo 2007. *Opportunities and constraints of local participation in ecotourism. A case study of Kasanka National Park (KNP) Zambia*. MPhil. Thesis in Development Studies. Norwegian University of Science and Technology (NTNU), Trondheim, x + 142 + iv Appendices.
- Hoare A.L. 2007. The use of non-timber forest products in the Congo Basin: Constraints and opportunities. London, Rain Forest Foundation – Securing Lands, sustaining lives. 56 p.
- Mapongmetsem Pierre-Marie 2007. *Lophira lanceolata* Tiegh. ex Keay. Vegetable oils/Oléagineux. Van der Vossen H.A.M. & Mkamilo G.S. (Eds.) PROTA 14, Wageningen (Nederland).
- Toirambe Bamoninga Benjamin 2007. Analyse de l'état des lieux des secteurs des produits forestiers non ligneux et évaluation de leur contribution à la sécurité alimentaire en République Démocratique du Congo. F.A.O. (GCP/RAF/398/GER), 88 p.
- Toms R. 2007. The sustainable harvesting of edible insects in South Africa, with reference to indigenous knowledge, African science, Western science and education. *The Australian Journal of Indigenous Education* **36**: 145-153.

## 2008

- Agbidye F.S., Ofuya T.I., Akindele S.O. 2008. Infestation and damage caused to *Vitellaria paradoxa* (Sapotaceae) by *Cirina forda* Westwood (Lepidoptera: Saturniidae) in Benue State Nigeria. *Nigerian Journal of Entomology* **25**: 75-81.
- Latham Paul 2008. Les chenilles comestibles et leurs plantes nourricières dans la province du Bas-Congo. Mystole Publ., Canterbury (U.K.), 44 p. ISBN-13 9780955420863.
- Louppe D., Oling-Amoako A.A., Brink M. 2008. Timbers 1. PROTA 7(1). Backhuys Publ., Wageningen (Nederland).

## 2009

- Agbidye F.S., Nongo N.N. 2009. Harvesting and processing techniques for the larvae of the Palid Emperor moth, *Cirina forda* Westwood (Lepidoptera: Saturniidae), among the Tiv people of Benue State, Nigeria. *J. Res. Forestry, wildlife Enviro.* **1**(1): 123-132.

- Agbidye F.S., Ofuya T.I., Akindele S.O. 2009a. Marketability and nutritional qualities of some edible forest insects in Benue State, Nigeria. *Pakistan J. Nutrition* **8**(7): 917-922.
- Agbidye F.S., Ofuya T.I., Akindele S.O. 2009b. Some edible insect species consumed by the People of Benue State, Nigeria. *Pakistan J. Nutrition* **8**(7): 946-950.
- Akpalu W., Muchapondwa E., Zikhali P. 2009. Can the restrictive harvest period policy conserve mopane worms in southern Africa? A bioeconomic modelling approach. *Environment and Development Economics* **14**(5): 587-600.
- Akpoussan Raphaël, Dué Edmond Ahipo, Kouadio Jean Parfait E.N., Kouamé Lucien Patrice 2009. Valeur nutritionnelle et caractérisation physicochimique de la matière grasse de la chenille (*Imbrasia oyemensis*) séchée et vendue au marché d'Adjamé (Abidjan, Côte d'Ivoire). *J. Animal Plant Sciences* **3**(3): 243-250.
- Ghaly Abdel E. 2009. The use of Insects as Human Food in Zambia. *Online Journal of Biological Sciences* **9**(4): 93-104.
- Hrabar H., Hattas D., Du Toit J.T. 2009. Intraspecific host preferences of mopane moths (*Imbrasia belina*) in Mopane (*Colophospermum mopane*) woodland. *African Zoology* **44**(2): 131-140.
- Madibela Othusitse, Mokwena K.K., Nsoso Shalaulani James, Thema Tefo Force 2009. Chemical composition of Mopane worm sampled at three different sites in Botswana and subjected to different processing. *Tropical Animal Health and Production* **41**(6): 935-942.
- Markhado Rudzani Albert, Von Maltitz Graham, Potgieter Martin J., Wessels Dirk C.J. 2009. Contribution of woodland products to rural livelihoods in the northeast of Limpopo. *South African Geographical Journal* **91**(1) 46-53.
- Ramos-Elorduy Julieta 2009. Anthro-entomophagy: Cultures, evolution and sustainability. *Entomological Research* **39**: 271-288.
- Scamperdale 2009 : <http://www.flicker.com/photos/36517576@N06/>
- Womeni Hilaire Macaire, Linder Michel, Tiencheu Bernard, Mbiapo Félicité Tchouanguép, Villeneuve Pierre, Fanni Jacques, Parmentier Michel 2009. Oils of insects and larvae consumed in Africa: potential sources of polyunsaturated fatty acids. *Oléagineux, Corps gras et Lipides*, **16**(4): 230-235.

## 2010

- Braide W., Sokari T.G., Hart A.D., Nwaoguikpe R.N. 2010. The nutritional status of seven species of plant leaves as food for an edible larva of lepidopteran, *Bunaea alcinoe*. *Int. J. Biol. Sci.* **2**(3): 298-301.
- Dube Shadreck, Dube C. 2010. Towards improved utilization of macimbi *Imbrasia belina* Linnaeus, 1758 as food and financial resource for people in the Gwanda District of Zimbabwe. *Zimbabwean Journal of Science and Technology* **5**: 28-36.
- Gondo T., Frost P., Kozanayi W., Stacks J., Mushongahande M. 2010. Linking knowledge and practise: Assessing options for sustainable use of mopane worms (*Imbrasia belina*) in southern Zimbabwe. *Journal of Sustainable Development in Africa* **12**(4): 127-145.
- Hecq Florence 2010. Etude des *Psychidae* (Lepidoptera) en forêts de tapias, dans la comune d'Arivonimamo à Madagascar. Travail de fin d'études. Université de Liège, Gembloux Agro-Bio Tech, 83 p.
- Jennings-Rentenaar T. 2010. The traditional methods of Malagassy indigenous silk producers and their contribution to the country's reforestation. [http://educationsustainabledevelopment.org/paper\\_38.doc](http://educationsustainabledevelopment.org/paper_38.doc)
- Malaisse François 2010. How to live and survive in Zambezian open forest (Miombo ecoregion). Les Presses agronomiques de Gembloux. 422 p.
- Osasona A.I., Olaofe O. 2010. Nutritional and functional properties of *Cirina forda* larva from Ado-Ekiti, Nigeria. *Afr. J. Food Sci.* **4**(12): 775-777.

- Ramandey E., van Mastrigt H., 2010, Edible insects in Papua, Indonesia: from delicious snack to basic need. In Durst, Johnson, Leslie & Shono, *Forest insects as food: humans bite back*. Bangkok, Thailand: 105-114.
- Scalercio Stefano, Malaisse François 2010. Between species and ethnospecies: Edible Psychidae in Tropical Africa. *Entomologie faunistique-Faunistic entomology*. 2010(2009) **62**(1): 17-24.

## 2011

- Braide W., Oranusi S., Udegbunam L.I., Oguoma O., Akobondu C., Nwaoguikpe R.N., 2011. Microbiological quality of an edible caterpillar of an emperor moth *Bunaea alcinoe*. *Journal of Ecology and the natural Environment* **3**(5): 176-180.
- Ekpo K.E. 2011. Effect of processing on the protein quality of four popular insects consumed in Southern Nigeria. *Archives of Appl. Sci. Res.* **3**(6): 307-326.
- Lisingo Janvier, Wetsi Jean-Lambert, Ntahobavuka Honorine 2011. Enquête sur les chenilles comestibles et les divers usages de leurs plantes hôtes dans les districts de Kisangani et de la Tshopo (R.D. Congo). *Geo-Eco-Trop* **34**(2010): 139-146.
- Oishi Takanori 2011. Chenille Tsombe au marché (Brazaville, Congo), 100 cfa pour 1 individu, filmé en octobre 2011. [www.youtube.com/watch?v=wpXBJtziZC4](http://www.youtube.com/watch?v=wpXBJtziZC4)
- Scriber J.Mark 2011. From emperor moths to Zulu Kings: Early entomophagy and Charlotte's web of Missionary Letters. *Association for Tropical Lepidoptera, Notes* (**June 2011**): 1-6.

## 2012

- Agbidye Francis Sarwan, Nongo Nicholas N., 2012. Harvesting and processing techniques of the larvae of *Cirina forda* Westwood (Lepidoptera: Saturniidae), among the Tiv people of Benue State, Nigeria. *J. Appl. Biosc.* **50**: 3533-3539.
- Ivbijaro Matt F.A. 2012. Poverty alleviation from biodiversity management. Ibadan, Book Builders, Edition Africa, xiv + 431 p.
- Lisingo wa Lisingo Janvier, Lokinda Litalema Faustin, Wetsi Jean-Lambert, Ntahobavuka Honorine 2012. L'exploitation artisanale du bois et des chenilles comestibles par les habitants de la ville de Kisangani et de ses environs. In C. Benneker et al. « Le bois à l'ordre du jour. Exploitation artisanale du bois d'œuvre en R.D. Congo, secteur porteur d'espoir pour le développement des petites et moyennes entreprises ». Tropenbos International, R.D. Congo.
- Nsevolo Mianbeka Papy 2012. Contribution à l'étude de l'entomophagie à Kinshasa. Travail de fin d'Etudes, Diplôme de Master complémentaire en Protection des cultures tropicales et subtropicales. Gembloux Agro-Bio Tech, 66 + xi p.
- Potgieter Martin J., Makhado Rudzani Albert, Potgieter Annelize 2012. Assessing the potential of insects as food and feed in assuring food security. Technical Consultation Meeting. Rome, F.A.O., 23-25<sup>th</sup> January 2012, 12 p. <http://www.researchgate.net/publication/262536514>
- Raubenheimer David, Rothman Jessica M., 2012. Nutritional ecology of entomophagy in Humans and other Primates. *Ann. Rev. Entomol.* **58**: 141-160.
- Solomon Mariam, Prisca N. 2012. Nutritive value of Lepidoptera litoralia (edible caterpillar) found in Jos Nigeria: implication for food security and poverty alleviation. *African J. of Food, Agriculture and Development* **12**(6): 6737-6747.
- Van Itterbeeck Joost, van Huis Arnold 2012. Environmental manipulation for edible insects procurement: A historical perspective. *Journal of Ethnobiology and Ethnomedicine* **8**(3): 1-19.
- Wickens Gerald E., 2012. *Economic Botany. Principles and Practises*. Tucson (USA), University of Arizona Press, 204 p.

## 2013

- Adepoju Oladejo Thomas, Daboh Oladele Olatunji, 2013. Nutrient composition of *Cirina forda* (Westwood)-enriched complementary food. *Ann. Nutr. Metab.* **63**(1-2): 139-144.

- Alamu O.T., Amao A.O., Nwokedi C.I., Oke O.A., Lawa I.O., 2013. Diversity and nutritional status of edible insects in Nigeria : A review. *Intern. J. Biodiversity and Conservation* **5**(4): 215-222.
- Barsics Fanny, Malaisse François, Razafimanantsoa Tsiresy M., Haubruge Eric, Verheggen François J. 2013. Les ressources sauvages comestibles des bois de *tapia* : inventaire des produits connus et consommés par les villageois. In F. Verheggen, J. Bogaert, E. Haubruge (Eds.): *Les vers à soie malgaches. Enjeux écologiques et socio-économiques*, 189-204.
- Barsics Fanny, Malaisse François, Lognay Georges, Wathelet Bernard, Haubruge Eric, Verheggen François J. 2013. Les ressources sauvages comestibles des bois de *tapia* : caractérisation alimentaire des produits consommés. In F. Verheggen, J. Bogaert, E. Haubruge (Eds.): *Les vers à soie malgaches. Enjeux écologiques et socio-économiques*, 205-218.
- Bronwyn Ann Egan 2013. Culturally and economically significant edible insects in the Blouberg Region, Limpopo Province, South Africa. PhD Thesis, Zoology, University of Limpopo, xvi + 329 p.
- Ibara Fortuné 2013. Environnement. Gastronomie locale: les chenilles au menu des Congolais. *Agence d'Information d'Afrique centrale*, 2 août 2013.
- Mbemba Fundu di Luyindu Théophile 2013. Aliments et denrées alimentaires traditionnels du Bandundu en R.D. Congo. Répertoire et composition en nutriments. Paris, L'Harmattan / RDC., 325 p.
- Moula Nassim, Hornick Jean-Luc, Ruppel Patrick, Antoine-Moussiaux Nicolas, Leroy Pascal 2013. Production of animal proteins in Congo Basin, a challenge for the future of people and Wildlife. International Conference "Nutrition and Food Production in the Congo Basin", Brussels, 15 p.
- Mvunda Fabrice Amisi, Uwikunda Serondo Héritier, Mande Paul, Alunga Lufungula Georges, Balagizi Karhagomba Innocent, Isumbusho Mwapu Pascal 2013. Valorisation de la chenille comestible *Bunaeopsis aurantiaca* dans la gestion communautaire du Sud-Kivu (République Démocratique du Congo). *VertigO*, Hors-Série **17**.
- Rumpold Birgit A., Schlüter Oliver K. 2013. Nutritional composition and safety aspects of edible insects. *Mol. Nutr. Food Res.* **57**(5): 802-823.
- Razafimanantsoa Tsiresy Maminiaina, Malaisse François, Raminosoa Noromalala, Rakotondrasoa Olivia Lovanirina, Rajoelison Gabrielle Lalanirina, Rabearisoa Misha Ratsimba, Ramamonjisoa Bruno Salomon, Poncelet Marc, Bogaert Jan, Haubruge Éric, Verheggen François 2013. Influence de la plante hôte sur les stades de développement de *Borocera cajani* (Lepidoptera: Lasiocampidae). *Entomologie faunistique - Faunistic Entomology* **66**: 39-46.
- Schmelzer Gabriella Harriet, Gurib-Fakim Ameenah (Eds.), 2013. Plant Resources of Tropical Africa (PROTA). 11 (2), Medicinal Plants.
- Van Huis Arnold, Van Itterbeek Joost, Klunder Harmke, Mertens Esther, Halloran Afton, Muir Giulia, Vantomme Paul 2013. *Edible insects: Future prospects for food and feed security*. Rome, F.A.O., Forestry Papers **171**, xvi + 201 p.

## 2014

- Akpoussan Raphaël Amon, Digbeu Y.D., Konan H.K., Kouadio Jean Parfait E.N., Dabonné S., Dué Edmond Ahipo, Kouamé Lucien Patrice 2014. Nutritional characteristics of the caterpillars (*Imbrasia oyemensis*) from Côte d'Ivoire. *Int. J. Recent Biotech.* **2**(3): 1-5.
- Badanaro Fègbawè, Amevoin Komina, Lamboni Courdjo, Amouzou Kou'santa. 2014. Edible *Cirina forda* (Westwood, 1849) (Lepidoptera, Saturniidae) caterpillar among Moba people of the Savannah Region in North Togo: from collector to consumer. *Asian Journal of Applied Science and Engineering* **3**: 13-24.
- Ivbijaro Matt F. A., 2014. Edible Insects of Nigeria. Invited Paper by the Nigerian Field Society.
- Kwiri Raphael, Winini Clive, Muredzi Perkins, Tongonya Jeritah, Gwala Wismore, Mujuru Felix, Gwala Shannon T. 2014. Mopane worm (*Gonimbrasia belina*) utilization, a potential source of protein in fortified blended foods in Zimbabwe: a review. *Global Journ. of Science Frontier Research, D, Agriculture and Veterinary* **14**(10), version 1: 55-67.

- Mabossy-Mobouna Germain, Kinkela Thérèse, Lenga Arsène, Malaisse François. 2014. *Imbrasia truncata* Aurivillius (Saturniidae): Importance en Afrique centrale, commercialisation et valorisation à Brazzaville. *Geo-Eco-Trop* **37**(2) (2013): 313-330.
- Okore Oghale, Avaoja Diane, Nwana Ifediora 2014. Edible insects of the Niger Delta area in Nigeria. *Journ. Of Natural Science Research* **4**(5), 9 p.
- Paiko Yohanna B., Jacob John O., Salihu Simon O., Dauda Bukar E.N., Suleiman Mohammed A.T., Akanya Helmina O. 2014. Fatty acid and amino-acid profile of Emperor moth caterpillar (*Cirina forda*) in Paikolro Local Government Area of Niger State, Nigeria. *American Journal of Biochemistry* **4**(2): 29-34.
- Shockley Marianne, Dossey Anne, 2014. Insects for human consumption. In Morales-Ramon J, Rojas G., Shapiro-Ilan D., *Mass Production of beneficial organisms. Invertebrates and entomopathogens*, Academic Press for Elsevier, 617- 652.
- Siulapwa Nathan J., Mwanbundu Alick, Lungu Edward P., Sichilima William 2014. Nutritional value of four common edible insects in Zambia. *Int. J. Science and Research* **3**(6): 876-884.

## 2015

- Kalonda E.M., Mbayo Marsi K., Kanangila A.B., Muhume S.K., Kahambu V.Z., Tshisand P., Tshibangu D.S.T., Bongo N.G., Ngholua K.N., Lumbu Jean Baptiste S., Mpiana Pius Thimankinda, 2015. Evaluation of antisickling activity of some insects extracts from Katanga in Democratic Republic of the Congo. *Journal of Advancement in medical and life Sciences*, **3**(1): 1-5.
- Malaisse François, Roulon-Doko Paulette, Lognay Georges, Paoletti Guido M. 2015. Chenilles et papillons dans l'alimentation humaine. In E. Motte-Florac & P. Le Gall (Eds.): *Tables des Hommes*. Presses universitaires de Rennes / Presses universitaires François-Rabelais (accepté pour publication).

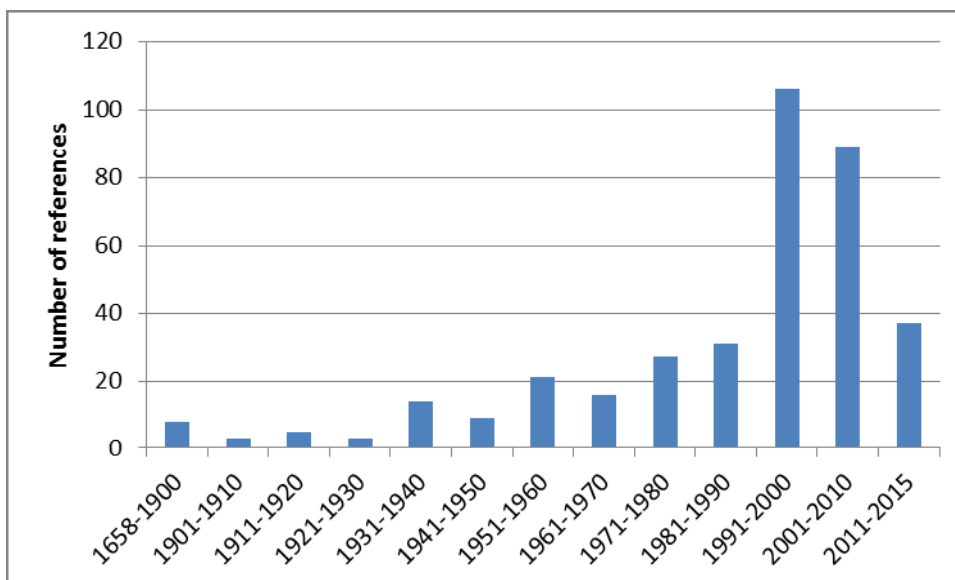
## DISCUSSION

The present paper is relevant to ethnozoology. The subject of human consumption of insects in general, and of Lepidoptera in particular, may be approached from several angles. First it is possible to develop a global approach checking all material published, in our case regarding Africa. The citation of items may be organized either by chronological order (see above and Figure 1), or from an alphabetic order of author's names (Appendix 1). The examination of the literature quoted above raises several points.

First most of the literature is in English, French taking easily the second position.

The second appendix presents names of all the species quoted as edible in Africa. They belong to 13 families. Ninety-two species, duly determined, are quoted, eleven others are known at genus level and three are campeonims. Concerning these campeonims the photos of caterpillars available differ from those of the other species consumed of the same family. These include one other species for the Lymantriidae, and 3 other species for the Limacodidae. The case of "lusambwa" is very interesting. Four different researchers (MALAISSE, 1997; DEMESMAECKER, 1997; LATHAM, 1999; KISIMBA, 2014) have taken photographs of the same caterpillar. Its consumption by 13 different ethnolinguistic groups has been quoted; the same caterpillar bears thirteen different campeonims (MALAISSE *et al.*, 2015). "Lusambwa" differed from all the other Notodontidae recently known to be eaten in Africa. At present its name is known, *Ipanaphe carteri* Walsingham (Fig. 2).

Regarding the various species, the mopane worm, *Imbrasia belina*, takes easily the first and dominant place, in the literature mentioned, with at least 59 references. Other important species are *Cirina forda* (13 times), different species belonging to the genus *Anaphe* (10 times), *Elaphrodes lactea* and *Imbrasia oyemensis* (3 times). Only one paper is devoted to the following species : *Bunaea alcinoe*, *Bunaeopsis aurantiaca*, *Coeliades libeon*, *Gymnanisa maia*, *Hadraphe aethiopica* and *Imbrasia truncata*.



**Figure 1.-** Number of references quoted for the 1658-1900 period, and after per decades.

A second approach consists of examining in detail local knowledge regarding species diversity (Appendix 3). SILOW (1976), TANGO (1981), MALAISSE (1997, 2010), ROULON-DOKO (1998) and LATHAM (1999) are five fine examples of such issue. Such approach provides an answer to “Will tribal knowledge survive the millennium?” of COX (2000).

A third issue concerns ecological knowledge of life cycle, hosts plants and seasonality of the diverse species consumed locally. *Imbrasia belina*, the mopane worm, is a classic example.

A fourth considers the present stage of the distribution network. The supplying and marketing of edible insects in large towns, mainly caterpillars, is being increasingly studied. As an example we may cite the experience in Brazzaville (MABOSSY-MOBOUNA *et al.*, 2014).

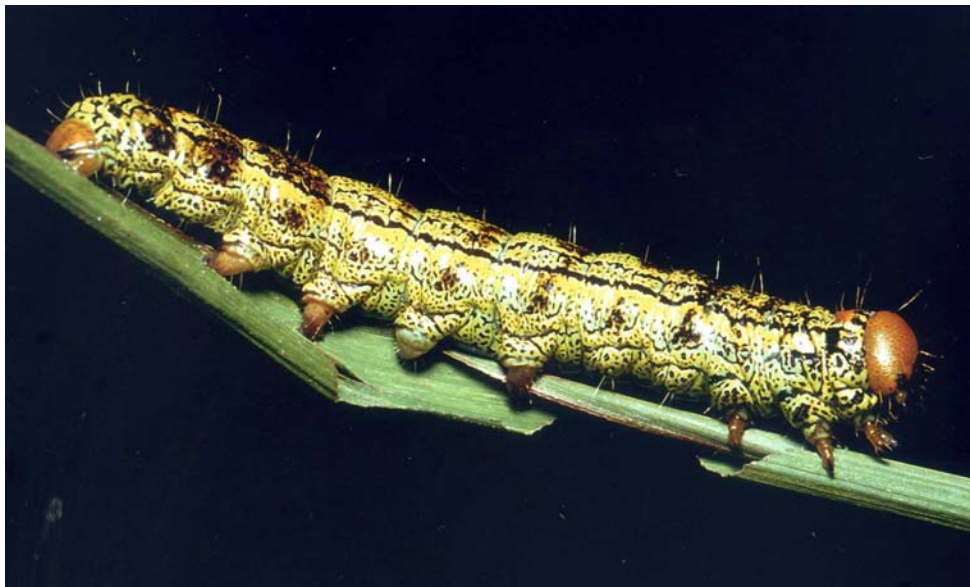
Finally, biodiversity management, domesticating and farming of edible Lepidoptera are being assessed as a new mini livestock enterprise. Assessing options for promoting management of natural ecosystems in order to secure diverse resources are now frequent. As examples we quote the papers of CLARKE *et al.* (1996) concerning miombo woodlands and AKPALU *et al.* (2009) for mopane woodlands.

## REFERENCES

- AKPALU, W., MUCHAPONDWA, E. & ZIKHALI, P., 2009. Can the restrictive harvest period policy conserve mopane worms in southern Africa? A bioeconomic modelling approach. *Environmental and Development Economics* 14(5) : 587-600.
- CLARKE, J., CAVENDISH W., COOTE, C., 1996. Rural households and miombo woodlands use, value and management. In B. Campbell (Ed.) “*The Miombo in transition: Woodlands and welfare in Africa*”. Bogor (Indonesia), Center for International Forestry Research (CIFOR), Chapter 5 : 101-135.
- COX, P.A., 2000. Will tribal knowledge survive the millennium ? *Science* 287 : 44-45.
- DEMESMAECKER, A., 1997. *Contribution à l'écologie: Les chenilles comestibles du Copperbelt, Zambie*. Mémoire de fin d'études, Gembloux, Faculté universitaire des Sciences agronomiques, 82 p. + 4 appendices.
- ISAACS, J., 1994. *Bush Food. Aboriginal food and herbal medicine*. Sydney, Landsdowne Publ., 256 p.
- JONGEMA, I., 2015. Reference list. “World list of edible insects”, Wageningen University, 8 p.
- KISIMBA KIBUYE E., 2014. Les chenilles comestibles du Katanga. Unpublished Report, 15 p.
- LATHAM, P., 1999. *Edible caterpillars and their food plants in Bas-Congo*. Forneth (U.K.), Latham edit., 38 p.
- MALAISSE, F., 1997. *Se nourrir en forêt claire. Approche écologique et nutritionnelle*. Gembloux (Belgique), Les Presses agronomiques de Gembloux/C.T.A. Wageningen, 384 p.
- MALAISSE, F., 2002. Campeophagy in Africa: A state of knowledge report. *Geo-Eco-Trop* 26(1) : 37-56.



- MALAISSSE, F., 2004. Ressources alimentaires non conventionnelles. *Tropicultura* 2004(SPE) : 30-36.
- MALAISSSE, F., 2005. Human consumption of Lepidoptera, Termites, Orthoptera and Ants in Africa. In M.G. Paoletti (Ed.) “*Ecological implications of minilivestock. Potential of insects, rodents, frogs and snails*”, Enfield (U.S.A.), Science Publ., 175-230.
- MALAISSSE, F., 2010. *How to live and survive in Zambezian open forest (Miombo ecoregion)*. Gembloux (Belgique), Les Presses agronomiques de Gembloux, 422 p.
- MALAISSSE, F., ROULON-DOKO, P., LOGNAY, G. & PAOLETTI Maurizio G., 2015. Chenilles et papillons dans l'alimentation humaine. In E. Motte-Florac & P. Le Gall (Eds.): *Tables des Hommes*. Presses universitaires de Rennes / Presses universitaires François-Rabelais (accepted for publication).
- MABOSSY-MOBOUNA, G., KINKELA, T., LENGA, A. & MALAISSSE, F. 2014. *Imbrasia truncata* Aurivillius (Saturniidae): Importance en Afrique centrale, commercialisation et valorisation à Brazzaville. *Geo-Eco-Trop* 37(2) (2013) : 313-330.
- OWEN D.F., 1973. *Man's environmental predicament. An introduction to Human Ecology in Tropical Africa*. London, Oxford University Press, vi + 214 p.
- RAMADE, F., 2008. *Dictionnaire encyclopédique des sciences de la nature et de la biodiversité*. Paris, Dunod, 690 p.
- RAMOS ELORDUY, J., 1997. Insects : A sustainable source of food ? *Ecology of Food and Nutrition* 36 : 247-276.
- RAMOS ELORDUY, J., PINO MORENO, J.M., VAZQUEZ, A.O., LANDERO, I., OLIVA-RIVERA, H. & MARTINEZ CAMOCHO, V.H., 2011. Edible Lepidoptera in Mexico. Geographic distribution, ethnicity, economic and nutritional importance for rural people. *Journ. of Ethnobiology and Ethnomedicine* 7: 2-22.
- ROULON-DOKO, P., 1998. *Chasse, cueillette et culture chez les Gbaya de Centrafrique*. Paris, L'Harmattan, 540 p.
- SHOCKLEY, M. & DOSSEY, A., 2014. Insects for human consumption. In J. Morales-Ramos, G. Rojas, D. Shapiro Ilan (Dir.), *Mass Production of beneficial organisms. Invertebrates and entomopathogens*, Academic Press for Elsevier, 617-652.
- SILOW, C., 1976. *Edible and other insects of Mid-Western Zambia – Studies in Ethno-Entomology II*. Uppsala (Sweden), Institutionen för Allmän och Jämförande Ethnografi. *Occ. Papers V*, 223 p.
- TANGO, M., 1981. *Les insectes comme aliment de l'homme*. Bandundu (Zaire), CEEBA Publications, Série II, 69, 177 p.
- VAN HUIS, A., VAN ITTERBEECK, J., KLUNDER, H., MERTENS, E., HALLORAN, A., MUIR, G. & VANTOMME, P., 2013. *Edible insects – Future prospects for food and feed security*. Rome, FAO Forestry Papers, 171, 154 p.



**Figure 2.-** My name is “lusambwa” in chibemba. I have twelve other campeonyms. I am known by about 20 million people. I received recently my scientific name. I am the final stage caterpillar of *Ipanaphe carteri* Walsingham. (Photo Léon LEMAIRE).

## Appendix 1.- Author list and corresponding year(s) of publications

Abatan (2002), Abbot P. (1995), Abe'Ele M. (1998), Aberlenc H-P. (1996), Abidye F. (2012), Acker P. (1976), Adamolekun B. (1993, 1997), Abeduntan S. (2004), Adepoju O. (2013), Adriaens E. (1951,1953), Agbidye F. (1999, 2008, 2009), Ajiboye D. (1993), Akai H. (2000), Akindele S. (2008, 2009), Akinnawo O. (2000, 2002), Akobondu C. (2011), Akpalu W. (2007, 2009), Akpossan R. (2009, 2014), Alamu O. (2013), Allotey J.(1996 a-b, 1997, 2000, 2003), Alunga F. (2013), Amadi E. (2005), Amao A. (2013), Amevoin K. (2014), Amouzou K. (2014), Ankanda D. (1996), Anonyme (2004), Antoine-Moussiaux N. (2013), Antonini (1938), Ashirou M. (1988, 1999), Avajoa D. (2014), Awano A. (2005), Bascoulergue P. (1959), Bada F. (2004), Badanaro F. (2014), Bahuchet S. (1975, 1985, 1992), Baiao D.(1939), Balinga M. (2003), Bani G. (1995), Banjo A. (2006), Barimalaa I. (2005), Barsics F. (2013 a-b), Baum H. (1903), Beemer H. (1939), Bell J. (1996), Benhura M. (1992), Bequaert J. (1921), Bergier E. (1941), Bergot J. (1959), Bernier G. (1961), Bertunison A. (1996), Beihler E. (1950), Bizé V. (1997), Bloomhill G. (1958), Bodemheimer F. (1951), Bogaert J. (2013), Bongo N. (2015), Bossard E. (1996), Boussim J. (1993), Braide W. (2010, 2011), Brandon H. (1987 a-b), Bronwyn A. (2013), Brink M. (2008), Brunck F. (1993), Bruno de Sousa R. (1976), Bryan F. (1997), Bulaimu T. (1974), Bulawayo B. (1996), Buttleworth R. (1997), Catling H. (1973), Cavendish W. (1996), Chavunduka D. (1975), Chidumayo E. (1975, 1999, 2001, 2002 a-b, 2003, 2004), Chilufia E. (1997), Chinn M. (1945), Chitsiku I. (1992), Chown S. (1997 a-b), Clarke J. (1996), Cloudsley-Thompson J. (1953), Cole H. (1902), Collin A. (1961), Coote C.(1996), Créac'h P. (1993), Crosse-Upcott A. (1958), Cunningham T. (1996), Cuypers J. (1970), Daboh O. (2013), Dabonné S. (2014), Daems H. (1969), Darteville E. (1951), de Almeida A. (1946), de Beaucorps R. (1941), De Conconi J. (1984, 1987, 1991), de Flacourt E. (1656), De Groote V. (1971), de Serpa Pinto A. (1881), Decary R. (1937), DeFoliart G. (1986, 1991, 1995, 1996, 1997, 1999), Deguine J-P. (1996), Denis J. (1964), Digbeu Y. (2014), Dithlogo M. (1996, 2000), Dixon S. (2005), Doke C. (1931), Dorward A. (2003), Dos Santos E. (1960), Dossey A. (2014), Dreyer J. (1982), Dué E. (2009, 2014), Duncan J. (1933), Du Toit J. (2009), Dzono L. (2002), Ene J. (1963), Evans A. (1988), Evrard A. (1969, 1970), Fanni J. (2009), Fazoranti J. (1993, 2000), Ferreira A. (1995), Flinke M ; (2004), Frears S. (1997), Fromme A. (2005), Frost P. (2002, 2003 a-b, 2005, 2007, 2010), Gade D. (1985), Gaerdes F. (1959), Gardiner A. (1993, 1997, 2007), Gardiner E. (2003), Gashe B. (1996 a-b, 1997, 2000), Gaston K. (1997), Gauslaa Y.(1989), George S. (1994), Ghaly A. (2009), Ghazoul J. (2006, 2007), Glew R. (1999), Godwey C. (1912), Göhler D. (2004), Golding F. (1942), Gomez P. (1961), Gondo T. (2001, 2003, 2007, 2010), Green Stuart V. (1998), Grivetti L. (1976, 1978, 1999), Gumbo D. (2002, 2005), Gurib-Fakim A.(2013), Gwala S. (2014), Gwala W. (2014), Gwaoguikpe R. (2010), Hakalima A. (1997), Halut R. (1961), Hannan M. (1959), Hara E. (2006), Hardouin J. (2003), Harris W. (1940), Hart A. (2010), Hattas D. (2009), Haubruge E. (2013 a-b), Hecq F. (2010), Heymans J-C. (1970), Himoonde T. (2007), Hladik A. (1995), Hladik C. (1995), Hoare A. (2007), Hobane P. (1955, 1994), Holden S. (1991), Holemans K. (1956), Hornick J-L. (2013), Hrabar H. (2009), Huttel N. (1995), Huttel W. (1995), Ibara F. (2013), Imamura-Hayaki K. (1996), Isumbisho M. (2013), Ivbijaro M. (2012, 2014), Jackson A. (1953), Jackson D. (1999), Jennings-Rentenaar T. (2010), Jerminy M. (1997), Joiris D. (1993), Junod H. (1898, 1927), Kahambu V. (2015), Kalonda E. (2015), Kanangila A. (2015), Kankonda B. (1992), Kassner T. (1911), Katya K. (1989), Ketika A. (2002), Ketiku A. (2000), Kinkela T. (2014), Kirtanishi K. (1995), Kokondi K. (1987 a-b), Konan H. (2014), Kouadio J. (2009, 2014), Kouamé L. (2009), Kozanayi W. (2002, 20007, 2010), Kurebgaseka N. (2003), Kwiri R. (2014), Lamboni C. (2014), Lambrechts A. (1961), Landry S. (1986), Latham P. (1999, 2000, 2002, 2003, 2008), Lawa I. (2013), Lawal O. (2006), Le Clerc A. (1976), Lee R. (1979), Legay J. (1996), Leleup N. (1969), Lenga A. (2014), Leroy P. (2013), Letsie L. (1996), Linder M. (2009), Lisingo J. (2011, 2012), Lithole K. (2003), Livingstone D. (1857), Lognay G. (2013, 2015), Lokinda L. (2012), Long S. (1995), Louppe D. (2008), Lowore J. (1995), Lumbu J-B. (2015), Lungu E. (2014), Lwatula C. (2001, 2002), Mabossy-Mobouna G. (2014), Macjannet M. (1947), Madalena S. (1976), Madoux G. (2003), Makhado R. (2009, 2012), Makungwa S.(1997), Malaisse F. (1969, 1970, 1974, 1978, 1980, 1983, 1995, 1997, 2003, 2004, 2005, 2010, 2013 (a-b), 2014, 2015), Malaisse-Mousset M. (1969, 1970), Mande P. (2013), Mapaure I. (2006), Mapongmetsem P-M. (2007), Mapunzu M. (2002), Marais E. (1996), Marcot B. (2005), Matera J. (1996), Matoba A.(2007), Maviya J. (2005), Mayaudon C. (1984), Mbata K. (1995, 1999, 2001, 2002 a-b, 2003, 2004), Mbayo M. (2015), Mbemba F. (1992),

Mbemba Fundi di Luyindu T. (2013), Mbétid-Massane E. (2005), Mbiapo F. (2009), McCandless D. (1997), McGeoch M. (1996), McGregor J. (1995), Meke G. (1995 a-b), Merle (1958), Michael M. (1997), Mignon J. (2002), Mignot J-M. (2003), Millson M. (1999), Miracle M. (1967), Mkanda F. (1994), Moore H. (1994), Moreno J. (1984), Morris B. (2004), Moruakgomo M. (1996), Motshegwe S. (1998), Motte E. (1980), Moula N. (2013), Moupeng B. (2002), Moussa J. (2002), Mpiana P. (2015), Mpotokwane S. (1996), Mpuchane S.(1996 a-b, 1997, 2000 a-b, 2003), Muchapondwa E. (2007, 2009), Mughogho D. (1992, 1995), Muhume S. (2015), Mujawo T. (2006), Mujuru F. (2014), Muleba M. (1996), Mulenga J. (1996), Munthali S. (1992, 1994), Munyuli Bin Mushambanyi T. (2000), Muredzi P. (2014), Mushongahande M. (2003, 2010), Musvoto C. (2006), Mvunda F. (2013), Mwambazi M. (2001), Mwambungu A. (2014), Mwandwa E. (1997), Mwenya J. (1997), Mwondela K. (2001), Nagwo N. (2001), Nasi R. (1999), N'Deckere-Ziangba F.(2004), Ndeinoma A. (2006), Ndoye O. (1999, 2005, 2006), Nell E. (2000), Newman J. (1975), N'Gasse G. (2003, 2004), Ngholua K. (2015), Niemeyer E. (1997), Nishimune T. (2000), Nkouka E. (1987), Nkouka K. (1996), Nongo N. (2005, 2009, 2012), Nsevolo M. (2012), Ntahobavuka H. (2011, 2012), Nunes J. (1960), Nwana I. (2014), Nwaoguikpe R. (2011), Nwokedi C. (2013), Nyakudya T. (2004), Oberprieler R. (1993), Odeyemi O. (2000), Ofuya T. (2008, 2009), Ogbalu O. (2005), Oguoma O. (2011), Ohiokpehai O. (1996), Okazaki H. (2000), Oke O. (2013), Okore O. (2014), Olaofe O. (2010), Oleng-Amoako O. (2008), Omotoso O. (2006), Orasuni S. (2011), Osasona A. (2010), Osborne C. (1924), Oshi T. (2011), Pagezi H. (1975, 1982, 1988), Palmer E. (1972), Paoletti M. (2015), Parent G. (1980), Parmentier M. (2009), Passos de Carvalho J. (1976), Paulian R. (1963), Pearson E. (1970), Perez M. ((1984), Pharithi M. (2004), Pitman N. (1972)Pius M. (2005), Poncelet M. (2013), Poole N. (2007), Potgieter A. (2012), Potgieter M. (2009, 2012)Prado E. (1984), Prisca N. (2012), Pstuszyn A. (1999), Quinn P. (1959), Rabearisoa M. (2013), Rajoelison G. (2013), Rakotondrasoa L. (2013), Ramamonjisoa B. (2013), Ramandey E. (2010), Ramel P. (1976, Raminosoa N. (2013), Ramos-Elorduy J. (1988, 2009), Raubenheimer D. (2012), Raynal-Roques A. (1993), Razafimananstoia T. (2013 a-b), Rebe M. (1999), Remacle J. (1992), Reynolds B. (1968), Richards A. (1939), Robin W. (1958), Rodriguez H. (1984), Rothman J. (2012), Rots O. (1956), Rougeot P-C. (1955, 1962), Roulon-Doko P. (1980, 1988, 2013), Ruppel P. (2013), Sabah C. (2014), Sallé G. (1993), Santos Oliveira J. (1976), Sato H. (1993), Saunders M. P. (1885),Schmitz R. (1912), Scholtz C. (1982), Scriber M. (2011),Scudder T. (1962), Seignobos C. (1996), Seitz S. (1993), Sekhwela M. (1989), Sekwati B. (1996), Sena L. (1999), Seydel C. (1939), Sharpe B. (1987), Shockley M. (2014), Siame A. (1996 a-b, 1997, 2000), Sichilima W. (2014), Silow C-A. (1976), Simmonds P. (1885), Simpanya F. (2000), Siulapwa N. (2014), Skinner J. (1996), Sokari T. (2010), Solomon M. (2012), Songonuga E. (2006), Southwood T. (1977), Stacks J. (2003, 2007, 2010), Stay H. (1931), Stroomgaard P. (1985), Styles C. (1994, 1995, 1996, 1997), Sunde L. (1986), Suping S. (2004), Swynnerton C. (1914); Tabuna H. (1999), Takeda J. (1990, 19991, Taligoola H. (1996), Tango M. (1981), Taylor S. (1975, 2003), Tchago B. (2002), Tchtatat M. (1999, 2006), Teffera G. (1996 a-b, 1997, 2000), Thagwana M. (2003, 2005), Thiry J. (1980), Thompson B. (1954), Tiencheu B. (2009), Tihon L. (1946), Toirambe B. (2007), Toms R. (2003, 2005, 2007)Tongonya J. (2014), Trolli G. 1935, Tshibangu D. (2015), Turk D. (1990), Tyokever J. (1999), Udegbumam L. (1999, 2011), Uwikunda S. (2013), Valdez F. (1984), Van den Berg M. (1973, 1974), Van der Stel S. (1686), van Huis A. (1996, 2003, 2012), Van Voorthuizen E. (1976), Vanderjadt D. (1999), VanDyk J. (2000), Vane Wright R. (1991), Van Itterbeeck J. (2012), vanMastricht H. (2010), Vantomme P. (2004), Vaughan M. (1994), Velcich G. (1963), Verheggen F. (2013 a-b), Vermeulen J. (1973), Verstraeten C. (1974), Villeneuve P. (2009), Von Maltitz G. (2009), Watanabe Y. (2000), Waterhouse G. (1932), Wathélet B. (2013), Watula C. (1970), Webb P. (1997), Wehmeyer A. (1982), Wessels D. (2009), Wetsi J-L. (2011, 2012), White C. (1992), Wickens G. (2012), Williamson J. (1941), Wilson K. (1990), Winini C. (2014), Wonimi H. (2009), Yagi S. (1997), Yeboah S. (1998, 2004), Young K. (1988), Zikhali P. (2007, 2009), Zinzombe I. (1994), Zitsmann G. (1999), Zyuulu M. (1997).

## Appendix 2.- Lepidoptera species consumed by man in Africa.

Family	Species	References
Brahmaeidae	<i>Dactylocerus lucina</i> Drury	Malaisse, Lognay, 2003
Cossidae	<i>Xyleutes capensis</i> Walker	Schabel, 2010
Eupterotidae	<i>Hemijana variegata</i> Rothschild	Bronwyn, 2013
Hesperiidae	<i>Coeliades libeon</i> Druce	Dartevelle, 1951
Lasiocampidae	<i>Bombycomorpha pallida</i> Distant	Ramos-Elorduy, 1993
	<i>Borocera cajani</i> (Vinson)	Jennings-Rentenaar, 2010; Barsics et al., 2013
	<i>Borocera madagascariensis</i> Boisduval	Decary, 1937
	<i>Borocera</i> sp. 3 “fangostoana”	Gade, 1985
	<i>Gonometa postica</i> Walker	Quin, 1959
	<i>Pachymeta robusta</i> Aurivillius	Roulon-Doko (pers. comm.)
Limacodidae	<i>Deborrea malgassa</i> Heylaerts	DeCary, 1937
	<i>Hadrrophe ethiopica</i> Bethune-Baker	Malaisse et al., 2003
	<i>Latoia albifrons</i> Guérin-Méneville	Razafimanantsoa (pers. comm.); Barsics (pers. comm.)
	<i>Parasa ebenau</i> Saalmüller	Razafimanantsoa (pers. comm.); Barsics (pers. comm.)
	“mafina” (merina)	Barsics et al., 2013
Lymantriidae	“nziozu” (kintandu)	Latham, 1999a
	<i>Rhyopteryx poecilanthes</i> Colenette	Malaisse, Lognay, 2003
Noctuidae	<i>Helicoverpa armigera</i> (Hübner)	Mignot, 2003
	<i>Nyodes prasinodes</i> Prout	Mapunzu, 2002
	<i>Prodenia</i> sp.1	Adriaens, 1953
	<i>Sphingomorpha chlorea</i> Cramer	Silow, 1976
	<i>Spodoptera exempta</i> (Walker)	Mbata, 1995
	<i>Spodoptera exigua</i> Hübner	Mbata, 1995
Notodontidae	<i>Anaphe infracta</i> Walsingham	Bahuchet, 1985; Takeda, 1990
	<i>Anaphe panda</i> (Boisduval)	Harris, 1940; Le Clerc et al., 1976
	<i>Anaphe reticulata</i> Walker	Alamu et al., 2013
	<i>Anaphe venata</i> Butler	Bahuchet, 1985; Ashiru, 1988
	<i>Antheua insignata</i> Gaede	Malaisse, Parent, 1980
	<i>Antheua</i> sp. 2	Latham, 2008
	<i>Antheua</i> sp. 3	Latham, 2008
	<i>Cerurina</i> cf. <i>marshalli</i> (Hampson)	Roulon-Doko (pers. comm.)
	<i>Desmeocraera</i> sp. 1	Silow, 1976
	<i>Drapedites uniformis</i> Swinhoe	Malaisse, Parent, 1980
	<i>Elaphrodes lactea</i> (Gaede)	Seydel, 1939
	<i>Ipanaphe carteri</i> Walsingham	Latham in Malaisse, Lognay, 2003
Nymphalidae	<i>Cymothoe caenis</i> Drury	Latham, 2008; Lisingo et al. (2011)
Papilionidae	cf. <i>Princeps</i> sp.1	Roulon-Doko, (pers. comm.)
Psychidae	<i>Deborrea malgassa</i> Heylaerts	Decary, 1937
	<i>Eumeta cervina</i> Druce	Scalercio, Malaisse, 2010

	<i>Eumeta rougeoti</i> Bourgeois	Scalercio, Malaisse, 2010
	<i>Eumeta strandi</i> Bourgeois	Scalercio, Malaisse, 2010
	<i>Eumeta</i> sp. 4	Pagezy, 1975
Saturniidae	<i>Antherina suraka</i> (Boisduval)	Gade, 1985
	<i>Argema mimosae</i> (Boisduval)	Kropf, 1899
	<i>Athletes gigas</i> Sonthonnax	Malaisse, Parent, 1980
	<i>Athletes semialba</i> Sonthonnax	Malaisse, Parent, 1980
	<i>Bunaea alcinoe</i> (Stoll)	Silow, 1976
	<i>Bunaea aslauga</i> (Kirby)	Barsics et al., 2013
	<i>Bunaeopsis aurantiaca</i> (Rothschild)	Malaisse, Parent, 1980; Muvundja et al. 2013
	<i>Ceranchia apollina</i> Butler	Razafimananstoia (pers. comm.)
	<i>Cinabra hyperbius</i> (Westwood)	Silow, 1976; Malaisse, Parent, 1980
	<i>Cirina butyrospermi</i> Vuillet	Bergier in Merle, 1958
	<i>Cirina forda</i> (Westwood)	Adriaens, 1953; Oberprieler, 1993
	<i>Epiphora bauhiniae</i> (Guérin-Méneville)	Pagezy, 1975
	<i>Gonimbrasia hecate</i> (Rougeot)	Malaisse, Parent, 1980
	<i>Gonimbrasia rectilineata</i> (Sonthonnax)	Morris, 2004
	<i>Gonimbrasia zambesina</i> (Walker)	Malaisse, Parent, 1980
	<i>Gonimbrasia</i> sp. 4	Latham, 1999a
	<i>Goodia kuntzei</i> (Dewitz)	Malaisse, Parent, 1980
	<i>Gynanisa ata</i> Strand	Malaisse, Parent, 1980
	<i>Gymnanisa maja</i> (Klug)	Oberprieler, 1993
	<i>Heniocha dyops</i> (Maassen)	Oberprieler, 1993
	<i>Imbrasia alopia</i> Westwood	Latham, 1999a
	<i>Imbrasia anthina</i> Karsch	Latham, 2008
	<i>Imbrasia belina</i> (Westwood)	Velcich, 1963; Oberprieler, 1993
	<i>Imbrasia cytherea</i> (Fabricius)	Smit, 1964
	<i>Imbrasia eblis</i> Strecker	Latham, 2008
	<i>Imbrasia epimethea</i> Drury	Adriaens, 1953
	<i>Imbrasia ertli</i> Rebel	Oberprieler, 1993
	<i>Imbrasia macrothyris</i> (Rothschild)	Malaisse, Parent, 1980
	<i>Imbrasia obscura</i> (Butler)	Bahuchet, 1985; Roulon-Doko (pers. comm.)
	<i>Imbrasia oyemensis</i> Rougeot	Akpossan et al., 2009; Lisingo et al., 2010
	<i>Imbrasia petiveri</i> (Guérin-Méneville)	Silow, 1976
	<i>Imbrasia rhodina</i> Rothschild	Latham, 1999a; Roulon-Doko (pers. comm.)
	<i>Imbrasia rubra</i> (Bouvier)	Malaisse, Parent, 1980
	<i>Imbrasia truncata</i> Aurivillius	Bahuchet, 1985; Roulon-Doko (pers. comm.)
	<i>Imbrasia tyrrhea</i> (Cramer)	Oberprieler, 1993
	<i>Imbrasia wahlbergi</i> (Boisduval)	Latham, 2008

	<i>Lobobunaea angasana</i> (Westwood)	Malaisse, Parent, 1980
	<i>Lobobunaea christyi</i> (Sharp)	Seignobos et al., 1996
	<i>Lobobunaea goodii</i> Holland	Takeda, 1990
	<i>Lobobunaea phaedusa</i> (Drury)	Latham, 1999a
	<i>Lobobunaea saturnus</i> (Fabricus)	Malaisse, Parent, 1980
	<i>Maltagorea fusicolor</i> (Mabille)	Farsics et al., 2013
	<i>Melanocera nereis</i> (Rothschild)	Latham, 1999a
	<i>Melanocera parva</i> Rothschild	Malaisse, Parent, 1980
	<i>Micragone ansorgei</i> (Rothschild)	Malaisse (comm. pers.)
	<i>Micragone cana</i> (Aurivillius)	Malaisse, Parent, 1980
	<i>Micragona herilla</i> (Westwood)	Ramos Elorduy, 1991
	<i>Nudaurelia anthina</i> (Karsh)	Latham, 1999a; Roulon-Doko (pers. comm.)
	<i>Nudaurelia richelmanni</i> Weymer	Malaisse, Parent, 1980
	<i>Pseudantherea discrepans</i> Butler	Malaisse, Lognay, 2003
	<i>Pseudaphelia appolinaris</i> (Boisduval)	Gardiner, Gardiner, 2003
	<i>Tagoropsis flavinata</i> (Walker)	Malaisse, Parent, 1980
	<i>Tagoropsis</i> sp. 2 “bokana”	Gade, 1985
	<i>Urota sinope</i> (Westwood)	Malaisse, Parent, 1980
	<i>Usta terpsichore</i> (Maassen & Weyding)	Malaisse, Parent, 1980
	<i>Usta wallengrenii</i> (Felder & Felder)	Gaerdes, 1959; Oberprieler, 1993
Sphingidae	<i>Acherontia atropos</i> (Linn.)	Latham, 1999; Roulon-Doko (pers. comm.)
	<i>Coelonia fulvinotata</i> (Butler)	Roulon-Doko (pers. comm.)
	<i>Herse convolvuli</i> (Linn.)	McGregor, 1995
	<i>Hippotion eson</i> (Cramer)	Malaisse, Lognay, 2003
	<i>Hippotion</i> sp. 2	Roulon-Doko (pers. comm.)
	<i>Lophostethus dumolinii</i> (Angas)	Roulon-Doko (pers. comm.)
	<i>Nephele comma</i> Hopffer	Silow, 1976; Morris, 2004
	<i>Platysphinx stigmatica</i> (Mabille)	Malaisse, Lognay, 2003
	<i>Platysphinx</i> sp. 2	Latham, 1999
	<i>Platysphinx</i> sp. 3	Roulon-Doko (pers. comm.)

(pers. comm.) : personal communication.

The consumption of *Lepidoptara litoralia* has been quoted by Salomon & Prisca (2012), but neither family, nor authority was given.

**Appendix 3.- Number of Lepidoptera species consumed by diverse ethnolinguistic units in Africa.** E: number of ethnospecies recognized, L: number of Linnean species (caterpillar supported by scientific determination). For a distribution map of campeophagy in Africa see Malaisse (2005).

ETHNOLINGUISTIC UNITS (COUNTRY)	REFERENCES	NUMBER OF CATERPILLARS	
		E	L
Kono (Guinea-Conakry)	Villiers, 1957	+	
Sénoufo (Burkina Faso)	Ouédraogo (pers. comm.)	1	1
Dioula=Dyula (Burkina Faso)	Ouédraogo (pers. comm.)	1	1
Bambara (Mali)	Bergier, 1941	+	
Bambara (Mali)	Salle et al., 2003	+	1
Lobi (Burkina Faso)	Ouédraogo (pers. comm.)	1	1
Karaboro (Burkina Faso)	Ouédraogo (pers. comm.)	1	1
Birifor (Burkina Faso)	Ouédraogo (pers. comm.)	1	1
Bobo Madaré (Burkina Faso)	Ouédraogo (pers. comm.)	1	1
Dagara (Burkina Faso)	Ouédraogo (pers. comm.)	1	1
Dafing (Burkina Faso)	Ouédraogo (pers. comm.)	1	1
Tiéfo (Burkina Faso)	Ouédraogo (pers. comm.)	1	1
Moba (Nigeria)	Badanaro et al., 2014	+	1
Bariba (Nigeria)	Fasoranti, Ajiboye, 1993	+	1
Hausa (Nigeria)	Paiko et al., 2014	+	1
Nupe (Nigeria)	Fasoranti, Ajiboye, 1993	+	1
Yoruba (Nigeria)	Golding, 1942	+	
Yoruba (Nigeria)	Ene, 1963	+	
Yoruba (Nigeria)	Ashiru, 1988	+	1
Yoruba (Nigeria)	Fasoranti, Ajiboye, 1993	+	1
Yoruba (Nigeria)	Adeduntan, Bata, 2004	+	1
Holoholo (D.R. Congo)	Schmitz, 1912	+	
Pangwe (Equat. Guinea)	Tessmann, 1913	21	
Fang (Gabon)	Sarraco-Lanata (pers. comm.)	5	
Nzebi (Gabon)	Rougeot, 1955	+	1
Nzebi (Gabon)	Sarraco-Lanata (pers. comm.)	12	
Kota (Gabon)	Sarraco-Lanata (pers. comm.)	4	
Teke (Gabon)	Sarraco-Lanata (pers. comm.)	17	
Kongo (Laadi) (R. Congo)	Jacquot, 1978	19	
Kongo (Ntandu) (D.R.Congo)	Latham, 1999a-b; 2000	22	12
Kongo (Ndibu) (D.R.Congo)	Kimba Kasalwe (pers. comm.)	27	
Yaka (D.R.Congo)	Lechien in Leleup, Daems, 1969	+	
Mongo ( D.R.Congo)	Chinn, 1945	31	2
Mongo (Ngandu) (D.R.Congo)	Takeda, 1990	12	
Mongo (Twa) (D.R.Congo)	Pagezy, 1988	31	7
Sakata (D.R.Congo)	Marcot, 2005	+	1
Yansi (D.R.Congo)	Tango Muyay, 1981	33	
Mbala (D.R.Congo)	Adriaens, 1953	9	4

Mbala (D.R.Congo)	Mbemba, Remacle, 1992	24	
Songo (D.R.Congo)	de Beaucorps, 1941	+	
Sondi=Sonde (D.R.Congo)	Leleup, Daems, 1969	4	2
Pende (D.R.Congo)	Leleup, Daems, 1969	7	3
Pende (D.R.Congo)	Daems in Leleup, Daems, 1969	18	
Luba-Kasai (D.R.Congo)	Colle, 1913; Katya Kitsa, 1989	9	
Lunda (Zambia)	Mbata, 1995	6	
Lunda-Ruund (Zambia)	Demismaecker, 1997	15	12
Tshokwe (D.R.Congo)	Roeges in Leleup, Daems, 1969	+	
Tshokwe (Angola)	Silow, 1976	+	
Holo (D.R.Congo)	Denis, 1964	> 6	
(U)Mbundu South (Angola)	Bossard, 1996	+	
Ganguella (Angola)	Pinto Serpa, 1881; Baiao, 1939	+	
Luimbi (Angola)	Baum, 1903	+	
Luc(h)asi (Zambia)	Silow, 1976	+	
Luc(h)asi (Zambia)	Mbata, 1995	1	
Lwena=Luvale (Zambia)	White, 1959	18	
Lwena=Luvale (Zambia)	Mbata, 1995	4	
Ndembo (Zambia)	Silow, 1976	+	
Kaonde (Zambia)	Mbata, 1995	5	
Mbunda (Zambia)	Silow, 1976	31	
Mbunda (Zambia)	Mbata, 1995	1	
Yauma=Iauma (Angola)	Silow, 1976	+	
Nkoya (Zambia)	Silow, 1976	12	
Mashasha (Zambia)	Silow, 1976	+	
Nkangala (Zambia)	Silow, 1976	+	1
Tswana (Kwena) (Botswana)	Livingstone, 1857	1	1
Tswana (Tlokwa) (Botswana)	Grivetti, 1979	5	2
(Si)Ndebele (Zimbabwe)	Chavanduka, 1975	1	
Gwembe Tonga (Zambia)	Scudder, 1962	+	
Tonga (Zambia)	Mbata, 1995	2	
Lenje (Zambia)	Torrend, 1931	+	
Lala (Zambia)	Thomson, 1954	+	
Lala (Zambia)	Mbata, 1995	1	
Nsenga (Zambia)	Mbata, 1995	10	
Kunda (Zambia)	Mbata, 1995	1	
Nyanja-Ngosi (Zambia)	Mbata, 1995	3	
Nyanja (Malawi)	Mkanda, Munthali, 1994	13	
Bisa (Zambia)	Mbata, Chidumayo, 1999	8	6
Bisa (Zambia)	Mbata, Chidumayo, 2003	8	5
Aushi (Zambia)	Kisimba, Muzinga (pers. comm.)	+	1
Lamba (Zambia)	Doke, 1931	+	
Lamba (Zambia)	Demismaecker, 1997	21	18
Sanga (D.R.Congo)	Lambrecht, Bernier, 1961	1	1
Aushi (D.R.Congo)	Malaisse et al., 2003	1	1
Tabwa (D.R.Congo)	Bergier, 1941	+	



Tabwa (D.R.Congo)	Kimba Kasalwe (pers. comm.)	+	
Bemba (D.R.Congo)	Malaisse, Parent, 1981	35	26
Bemba (D.R.Congo)	Malaisse, 1997a	38	24
Bemba (D.R.Congo)	Malaisse, 2004	40	27
Bemba (Zambia)	Richards, 1939	6	
Bemba (Zambia)	Mbata, 1995	26	
Malila (Tanzania)	Latham (pers. comm.)	1	
Lega-Shabunda (D.R.Congo)	Bergier, 1941	+	
Lega-Rhwa (D.R.Congo)	Seitz, 1993	+	
Shi (D.R.Congo)	Seitz, 1993	2	
Gogo (Tangania)	Cole, 1902	+	
Sandawe (Tanzania)	Newman, 1975	+	
Ngindo (Tanzania)	Crosse-Upcott, 1958	+	
Yao (Mozambique)	Harris, 1940	+	1
Tumbuka (Zambia)	Mbata, 1995	+	
Venda (Zimbabwe)	Wessmann, 1908	+	
Venda (Zimbabwe)	Stayt, 1931	+	
Venda (Zimbabwe)	Jackson, 1954	9	1
Thonga (Rep. South Africa)	present study	+	
Thonga (Rep. South Africa)	Junod, 1927	+	
Ronga (Rep. South Africa)	Silow, 1976	+	
Swazi (Swaziland)	Beemer, 1939	1	
Pedi (Sotho North) (Rep. South Africa)	Bronwyn, 2013	+	1
Pedi (Sotho Central) (Rep. South Africa)	Quin, 1959	5	5
Shona-Ndau (Zimbabwe)	Benhura, Chitsiku, 1990; 1992	1	1
Shona-Karanga (Zimbabwe)	McGregor, 1995	+	
Shona (Zimbabwe)	Duncan, 1933	6	
Shona (Zimbabwe)	Gelfand, 1971	7	1
Shona (Zimbabwe)	Chavanduka, 1975	5	3
Shona (Zezuru) (Zimbabwe)	Hannan, 1959	+	1
Nandi (Kenya)	Yagi, 1997	+	
Zande(D.R.Congo)	Emin-Pasha, 1888	+	
Zande(D.R.Congo)	de Schlippé, 1956	+	
Zande(D.R.Congo)	De Smet, 1972	+	
Medje(D.R.Congo)	Bequaert, 1921	+	
Gbaya (Cameroun)	Mapongmetsem, 2007	+	
Gbaya-Bodoe (Central Afr. Rep.)	Roulon-Doko, 1998	59	13
Bwaka (Central Afr. Rep.)	Bergier, 1941	+	
Bwaka = (Y)Aka (Central Afr. Rep.)	Bahuchet, 1985; Hladik, 1995	11	8
Issongo (Central Afr. Rep.)	Hladik, 1995	12	7
Bofi (Central Afr. Rep.)	Malaisse, 2004	17	9
Yangere (Central Afr. Rep.)	Masseguin, Antonini, 1938	21	
Dama(n) (Namibia)	Oberprieler, 1993	4	4
Mofu (Cameroun)	Seignobos et al., 1996	3	
Tiv (Nigeria)	Agbidye, Tyokever, 1999	2	2
Idoma (Nigeria)	Agbidye et al., 2009	+	1

Igede (Nigeria)	Agbidye et al., 2009	+	1
Ebira (Nigeria)	Fasoranti, Ajiboye, 1993	+	1
Bassa (Cameroun)	Merle, 1958	3	
Kalanga (Botswana)	Zitzmann, 1999	+	1
San (Namibia)	Oberprieler, 1993	3	3
San (Namibia)	Imamura-Hayaki, 1996	+	
San (!Gui) (Botswana)	Nonaka, 1996	7	1
San (Bushman) (Namibia)	Marais, 1996	1	1
Nama(n) (Namibia)	Oberprieler, 1993	4	4
Nama(n) (Namibia)	Marais, 1996	+	3
Damara (Namibia)	Oberprieler, 1993	4	4
Damara (Namibia)	Marais, 1996	+	5
Antankarana (Madagascar)	Decary, 1937	+	
Bara (Madagascar)	Gade, 1985	5	2
Betsileo (Madagascar)	Ellis, 1838	+	
Betsileo (Madagascar)	Gade, 1985	5	2
Merina (Madagascar)	Decary, 1937	+	1
Merina (Madagascar)	Gade, 1985	5	2
Sakalava (Madagascar)	Decary, 1937	+	1

+ : at least one species, no precise values given.