



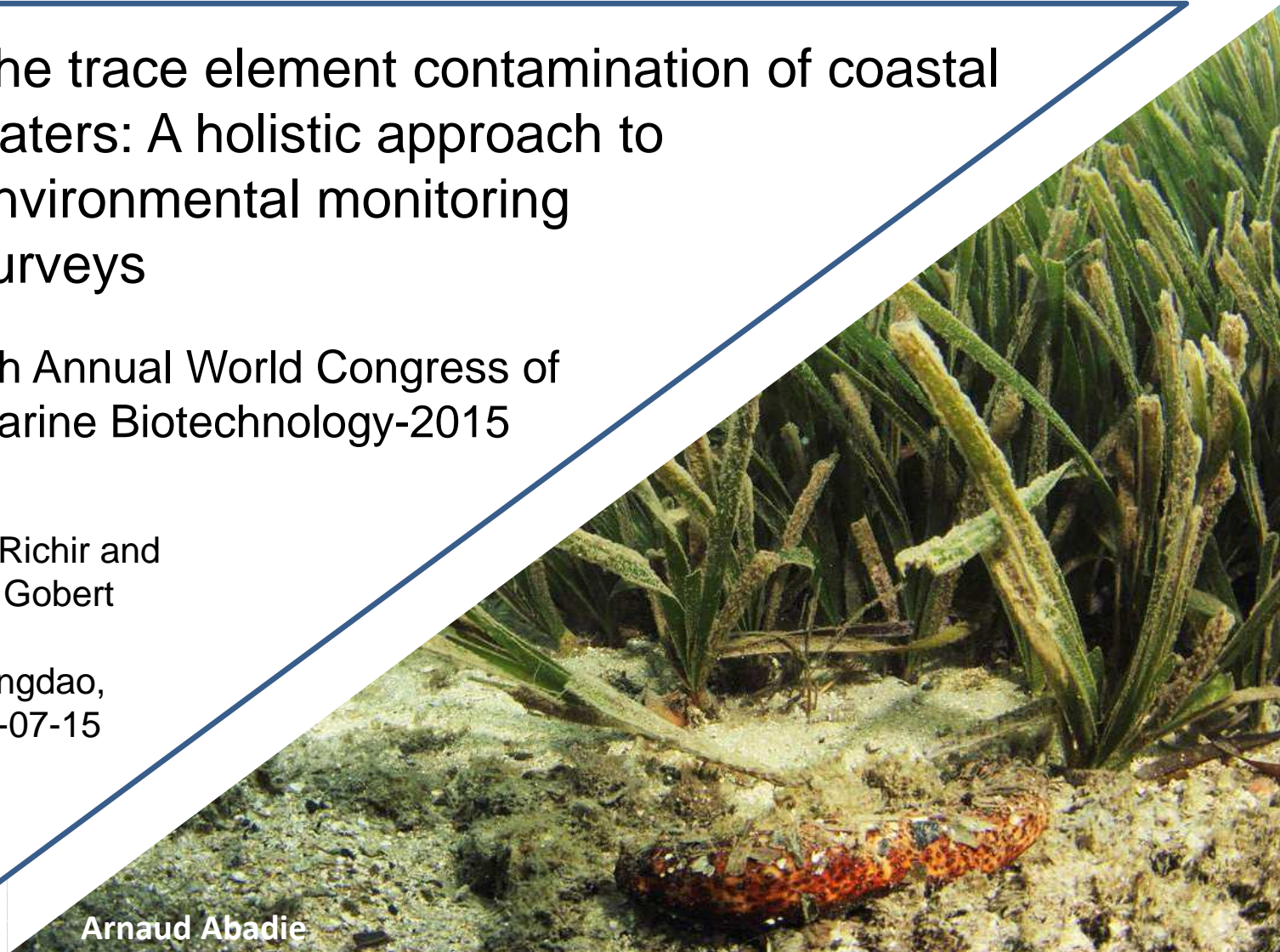
The trace element contamination of coastal waters: A holistic approach to environmental monitoring surveys

5th Annual World Congress of Marine Biotechnology-2015

J. Richir and
S. Gobert

Qingdao,
11-07-15

Arnaud Abadie



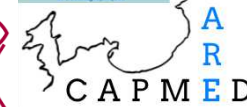


Coastal pollution of the Mediterranean

UMONS



STAR
AR
ED
CAPMED



Note: Identification of hot spots and areas of major environmental concern are shown on a country-by-country basis. Therefore pollution stress was evaluated at the national rather than pan-Mediterranean level.

Source: EEA and UNEP, Priority issues in the Mediterranean environment, 2006.

(UNEP/MAP, 2012; State of the Mediterranean Marine and Coastal Environment)

PERIODIC TABLE of the ELEMENTS



DEPARTMENT OF
SCIENCE AND TECHNOLOGY

Proudly sponsored by the
**SHUTTLEWORTH
FOUNDATION**
Supporting social innovation
Tel: +91 81 976 100 | Fax: +91 81 976 101 | www.shuttleworthfoundation.org

VII A 18
He
Helium 2
4.00

Ne
Neon 10
20.18

Ar
Argon 18
39.95

Kr
Krypton 36
83.80

Xe
Xenon 54
131.29

Rn
Radon 86
[222]

La
Lanthanum 57
138.91

Ac
Actinium 89
227.03

IA 1
H
Hydrogen 1
1.01

IIA 2
Li
Lithium 3
6.94

Na
Sodium 11
22.99

K
Potassium 19
39.10

Rb
Rubidium 37
85.47

Cs
Caesium 55
132.91

Fr
Francium 87
[223]

Be
Beryllium 4
9.01

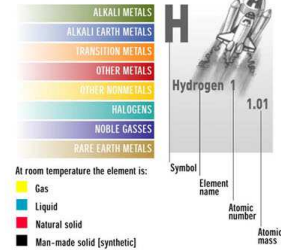
Mg
Magnesium 12
24.31

Ca
Calcium 20
40.08

Sr
Strontium 38
87.62

Ba
Barium 56
137.33

Ra
Radium 88
[226]

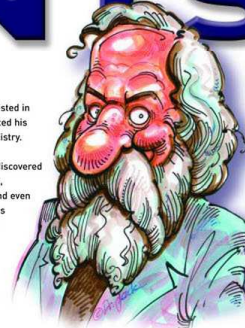


DMITRI MENDELEYEV (1834 - 1907)

The Russian chemist, Dmitri Mendeleev, was the first to observe that if elements were listed in order of atomic mass, they showed regular (periodical) repeating properties. He formulated his discovery in a periodic table of elements, now regarded as the backbone of modern chemistry.

The crowning achievement of Mendeleev's periodic table lay in his prophecy of then, undiscovered elements. In 1869, the year he published his periodic classification, the elements gallium, germanium and scandium were unknown. Mendeleev left spaces for them in his table and even predicted their atomic masses and other chemical properties. Six years later, gallium was discovered and his predictions were found to be accurate. Other discoveries followed and their chemical behaviour matched that predicted by Mendeleev.

This remarkable man, the youngest in a family of 17 children, has left the scientific community with a classification system so powerful that it became the cornerstone in chemistry teaching and the prediction of new elements ever since. In 1955, element 101 was named after him: Md, Mendeleevium.



III B 3	IV B 4	V B 5	VI B 6	VII B 7	VIII 8	VIII 9	VIII 10	I B 11	II B 12	IIIA 13	IVA 14	VA 15	VIA 16	VII A 17
Sc Scandium 21 44.96	Ti Titanium 22 47.88	V Vanadium 23 50.94	Cr Chromium 24 52.00	Mn Manganese 25 54.94	Fe Iron 26 55.85	Co Cobalt 27 58.93	Ni Nickel 28 58.69	Cu Copper 29 63.55	Zn Zinc 30 65.39	B Boron 5 10.81	C Carbon 6 12.01	N Nitrogen 7 14.01	O Oxygen 8 16.00	F Fluorine 9 19.00
Y Yttrium 39 88.91	Zr Zirconium 40 91.22	Nb Niobium 41 92.91	Mo Molybdenum 42 95.94	Tc Technetium 43 (98)	Ru Ruthenium 44 101.07	Rh Rhodium 45 102.91	Pd Palladium 46 106.42	Ag Silver 47 107.87	Cd Cadmium 48 112.41	Al Aluminium 13 26.98	Si Silicon 14 28.09	P Phosphorus 15 30.97	S Sulphur 16 32.06	Cl Chlorine 17 35.45
La Lanthanum 57 138.91	Ce Cerium 58 140.12	Pr Praseodymium 59 140.91	Nd Neodymium 60 144.24	Pm Promethium 61 (145)	Sm Samarium 62 150.36	Eu Europium 63 151.96	Gd Gadolinium 64 157.25	Tb Terbium 65 158.93	Dy Dysprosium 66 162.50	Ge Germanium 32 72.61	As Arsenic 33 74.92	Se Selenium 34 78.96	Br Bromine 35 79.90	I Iodine 53 126.90
Ac Actinium 89 227.03	Th Thorium 90 232.04	Pa Protactinium 91 231.04	U Uranium 92 238.03	Np Neptunium 93 (237)	Pu Plutonium 94 (244)	Am Americium 95 (243)	Cm Curium 96 (247)	Bk Berkelium 97 (247)	Cf Californium 98 (251)	Sn Tin 50 118.71	Sb Antimony 51 121.76	Te Tellurium 52 127.60	Pb Lead 82 207.20	Bi Bismuth 83 208.98
La Lanthanum 57 138.91	Ce Cerium 58 140.12	Pr Praseodymium 59 140.91	Nd Neodymium 60 144.24	Pm Promethium 61 (145)	Sm Samarium 62 150.36	Eu Europium 63 151.96	Gd Gadolinium 64 157.25	Tb Terbium 65 158.93	Dy Dysprosium 66 162.50	Ho Holmium 67 164.93	Er Erbium 68 167.26	Tm Thulium 69 168.93	Yb Ytterbium 70 173.04	Lu Lutetium 71 174.96
La Lanthanum 57 138.91	Ce Cerium 58 140.12	Pr Praseodymium 59 140.91	Nd Neodymium 60 144.24	Pm Promethium 61 (145)	Sm Samarium 62 150.36	Eu Europium 63 151.96	Gd Gadolinium 64 157.25	Tb Terbium 65 158.93	Dy Dysprosium 66 162.50	Ho Holmium 67 164.93	Er Erbium 68 167.26	Tm Thulium 69 168.93	Yb Ytterbium 70 173.04	Lu Lutetium 71 174.96



P
O
S
I
D
O
N
I
A



O
C
E
A
N
I
C
A





Posidonia oceanica distribution

UMONS



STAR
AR
ED



Geographical distribution of *Posidonia oceanica* (Michel, 2012; redrawn using data from Lipkin et al., 2003 ; Procaccini et al., 2003; Boudouresque et al., 2006; Gobert et al., 2006; Meinesz et al., 2009). 1: Gibraltar; 2: Almeria; 3: Oran; 4: Coasts of Syria, Israel and Lebanon; A: Rhone estuary; B: Po estuary; C: Nile estuary.




Objectives



O
B
J
E
C
T
I
V
E
S

- i. to assess, for the first time, the TE contamination in the entire Mediterranean biomonitored with *P. oceanica*;
- ii. to propose a new 5-level water quality scale;
- iii. to calculate coastal water pollution indices from bioaccumulated TE levels measured in that bioindicator;
- iv. to produce, on the basis of these data, accurate maps of the contamination of the Mediterranean by TEs.

Overall aim of this work:

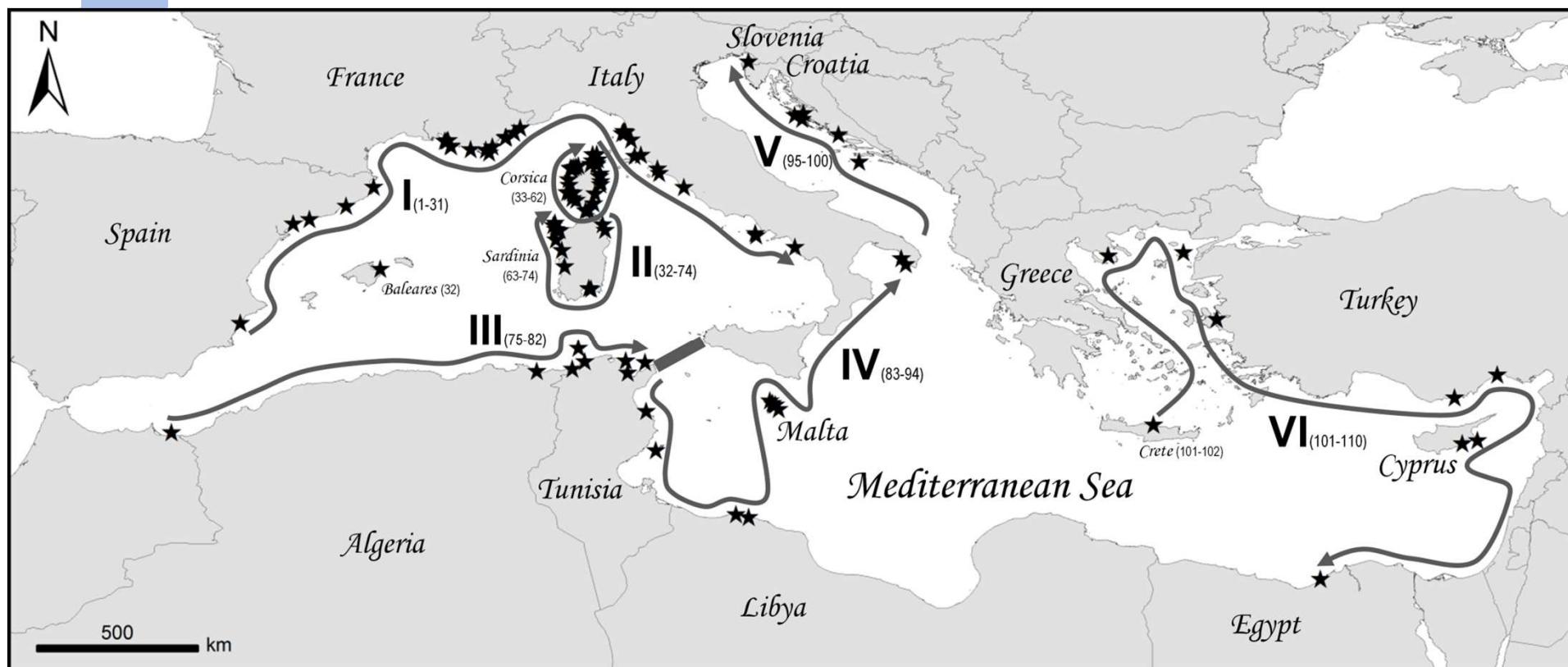
 to develop a **holistic approach** in order to provide scientists, stakeholders and decision makers with **a global tool to bioassess the TE contamination severity** of Mediterranean coastal waters.



Sampling



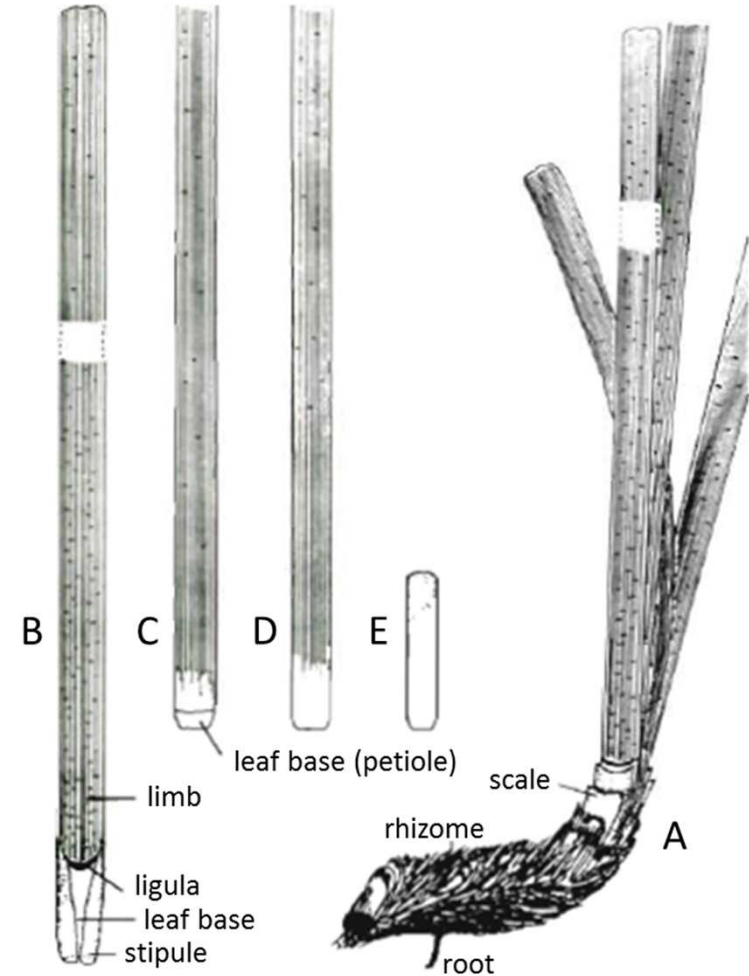
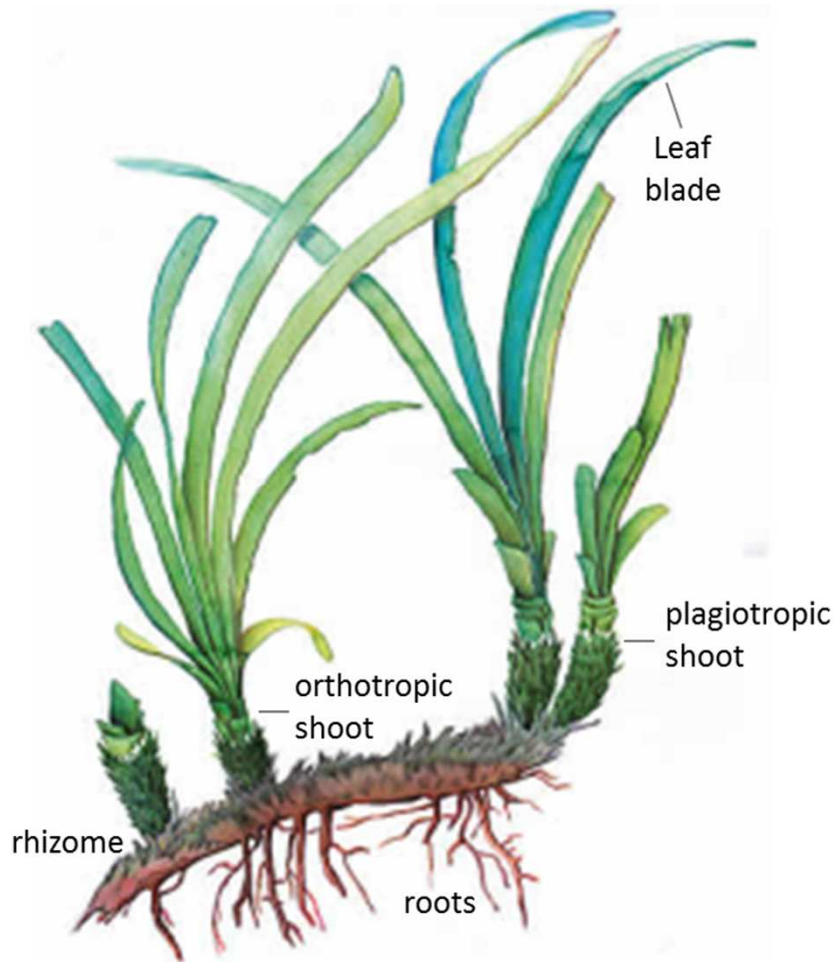
110 sites differing by their levels of exposure to contaminants sampled for *P. oceanica*.





P. oceanica compartmentalization

MATERIAL - METHODS



Left: *P. oceanica* shoots fixed on a plagiotropic rhizome. Right: (A) shoot of leaves on a plagiotropic rhizome; (B, C) adult leaves; (D) intermediate leaf; (E) juvenile leaf (modified after Libes and Boudouresque, 1987).



Trace elements monitored

MATERIAL - METHODS

Hg
Mercury 80
200.59

Ni
Nickel 28
58.69

Cd
Cadmium 48
112.41

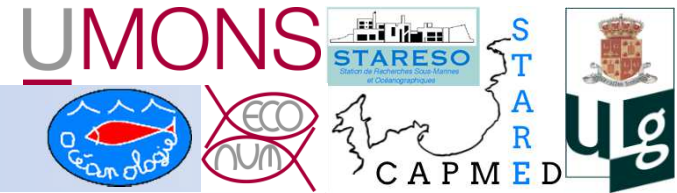
Pb
Lead 82
207.20

PRODUCED BY THE FOUNDATION FOR EDUCATION, SCIENCE AND TECHNOLOGY FOR NATIONAL SET WEEK 2003

Cu
Copper 29
63.55

Ag
Silver 47
107.87

As
Arsenic 33
74.92



Maths and stats: monitoring

M
A
T
E
R
I
A
L

- ❖ Water quality scale
- ❖ Contamination indices:
 - Trace Element Spatial Variation Index (TESVI)
 - Trace Element Pollution Index (TEPI)

- Maths and stats: spatial analysis

M
E
T
H
O
D
S

- ❖ GIS mapping
- ❖ Principal component analysis
- ❖ Cluster analysis
- ❖ Correlation analysis



Maths and stats: 5-level water quality scale



MATERIAL - METHODS

qu. 1	qu. 2	qu. 3	qu. 4
0.6000	1.3333	1.7635	2.9333
0.6333	1.3333	1.7667	2.9667
0.6667	1.3667	1.7682	3.0012
0.7000	1.4000	1.8000	3.1253
0.7667	1.4000	1.8000	3.2113
0.8000	1.4000	1.8018	3.2333
0.8333	1.4333	1.8241	3.2333
0.8333	1.4333	1.8349	3.3667
0.8333	1.4333	1.8667	3.3667
0.8667	1.4511	1.9667	3.4705
0.9000	1.4667	1.9667	3.6000
1.0333	1.5000	2.0000	3.7667
1.0667	1.5000	2.0333	3.8000
1.0667	1.5180	2.1667	3.9000
1.1333	1.5667	2.2000	4.0667
1.1667	1.6000	2.2793	4.0667
1.1667	1.6000	2.3333	4.4333
1.1667	1.6333	2.3333	4.6000
1.2000	1.6333	2.3667	5.3333
1.2333	1.6333	2.4000	5.4790
1.2333	1.6667	2.4333	5.5667
1.2667	1.6667	2.5333	5.9129
1.2667	1.7000	2.6333	5.9250
1.2667	1.7000	2.6667	6.0751
1.2667	1.7000	2.7333	6.1230
1.2667	1.7333	2.9333	7.9000
1.3000	1.7333	2.9333	8.5667
1.3000			14.5000

Quartile means

Superior quartiles	limit of Pb
quartile 1	1.3083
quartile 2	1.7484
quartile 3	2.9333
quartile 4	14.5000

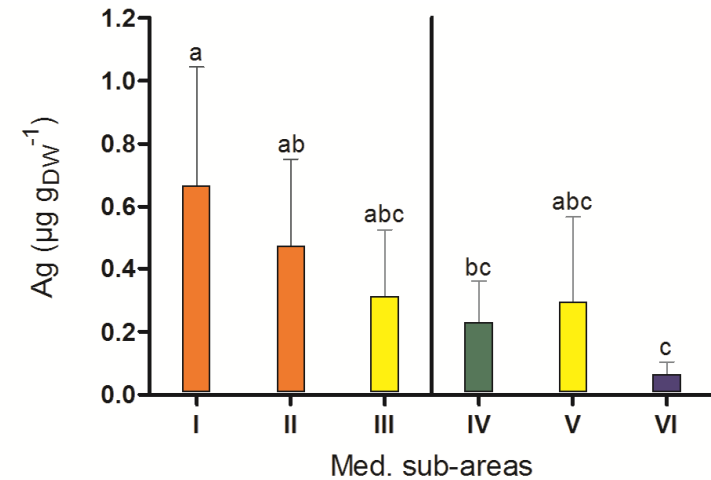
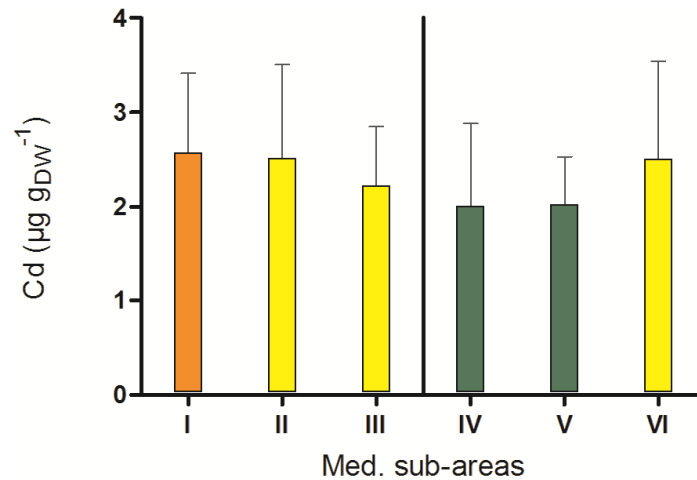
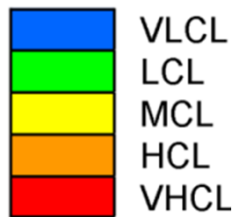
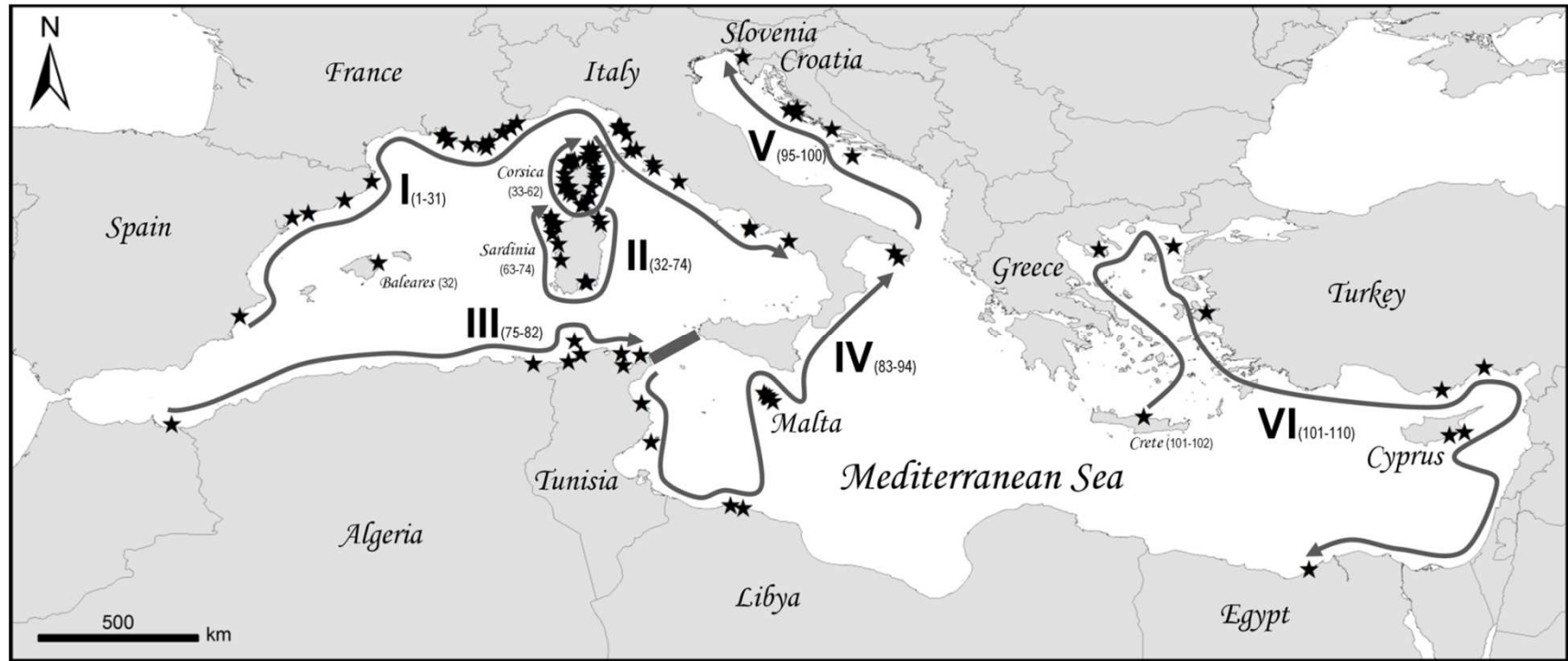
5 contamination levels

< 1 st qu. mean : very low CL
1 st -2 nd qu. mean: low CL
2 nd -3 rd qu. mean: medium CL
3 rd -4 th qu. mean: high CL
> 4 th qu. mean: very high CL



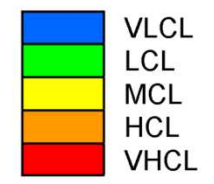
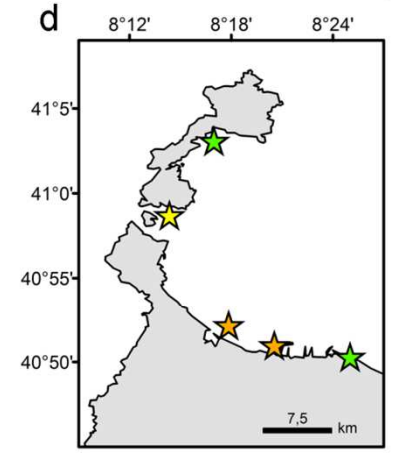
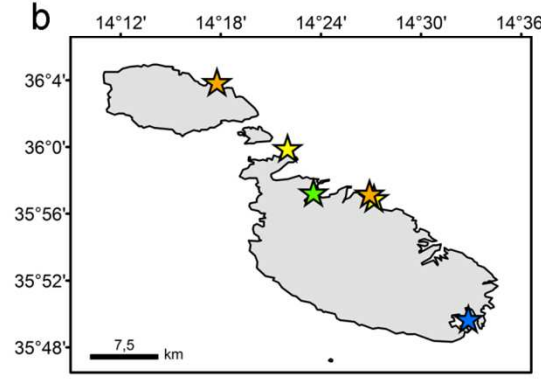
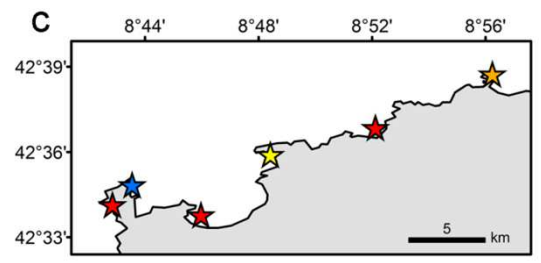
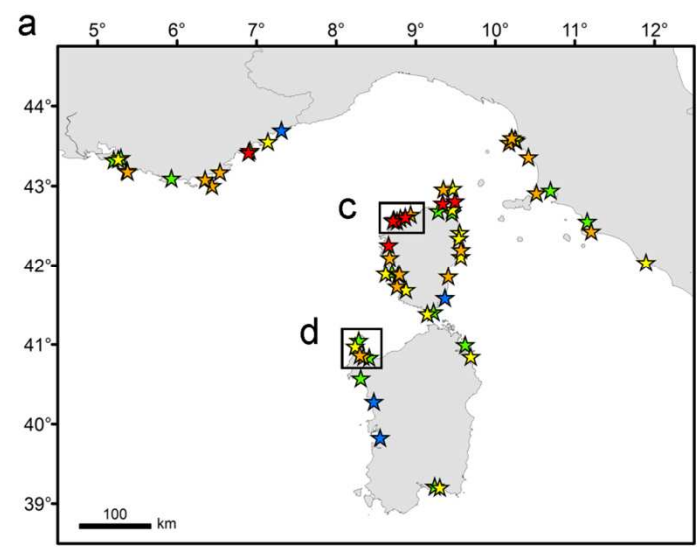
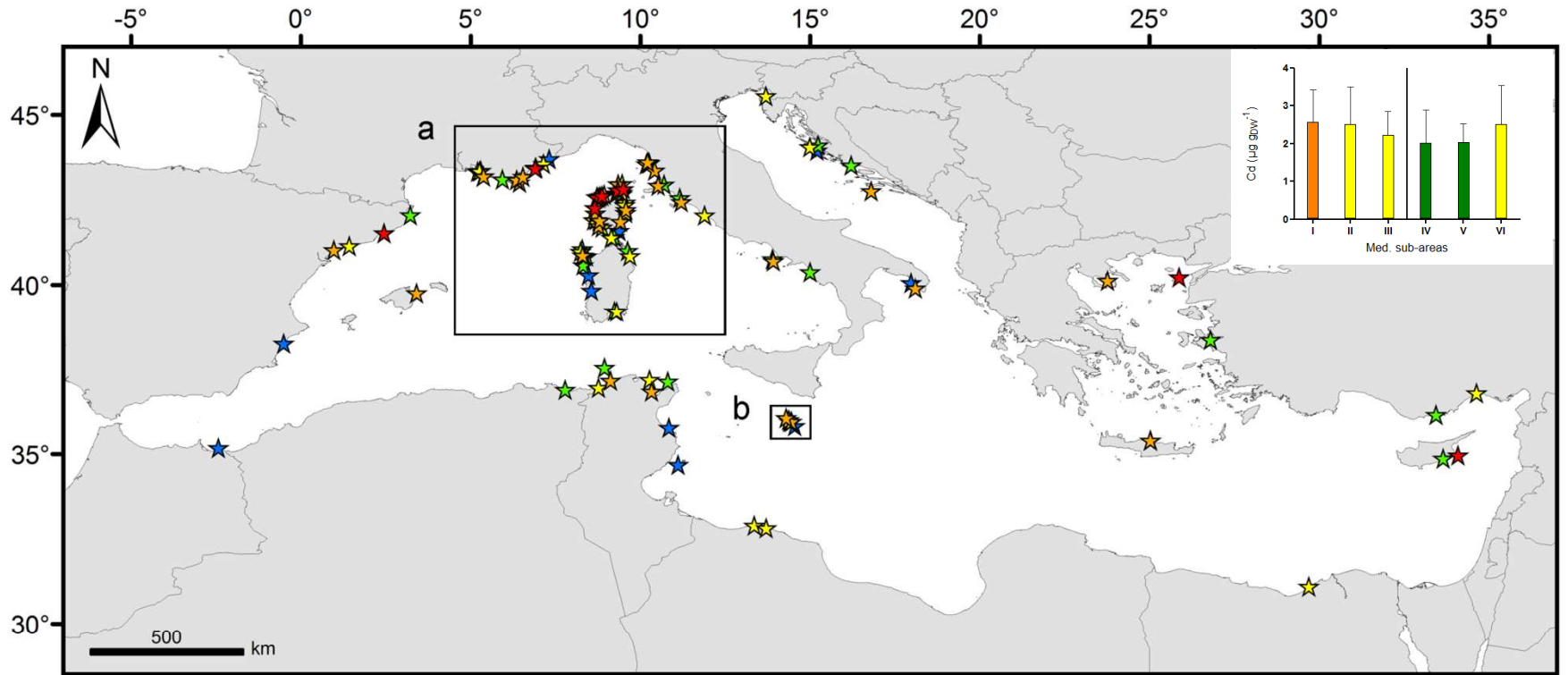
Sub-areas differences

RESULTS - DISCUSSION





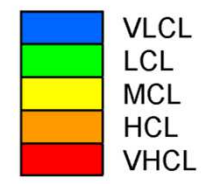
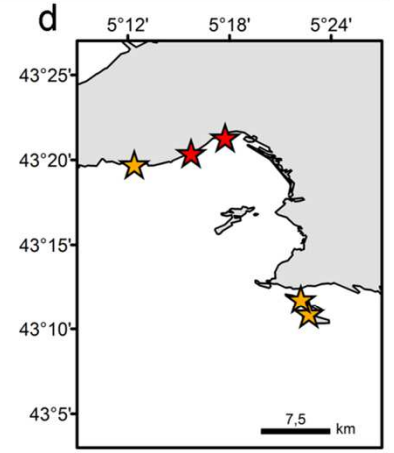
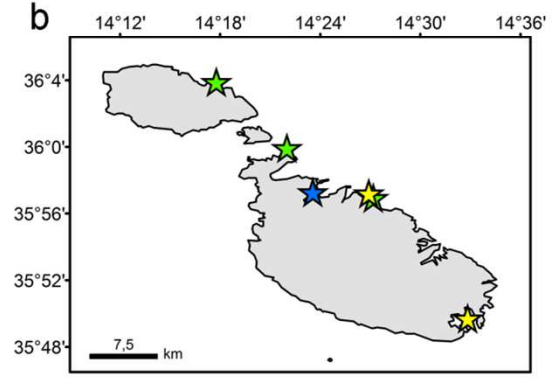
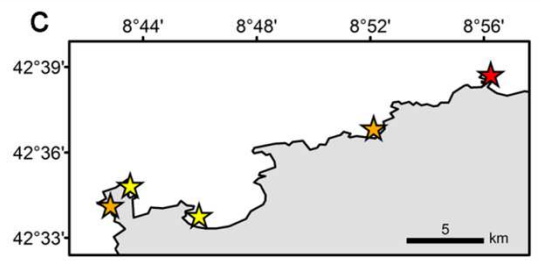
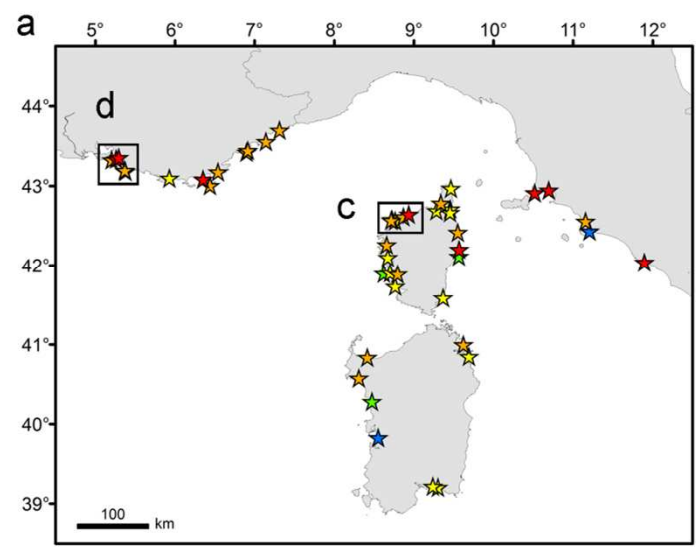
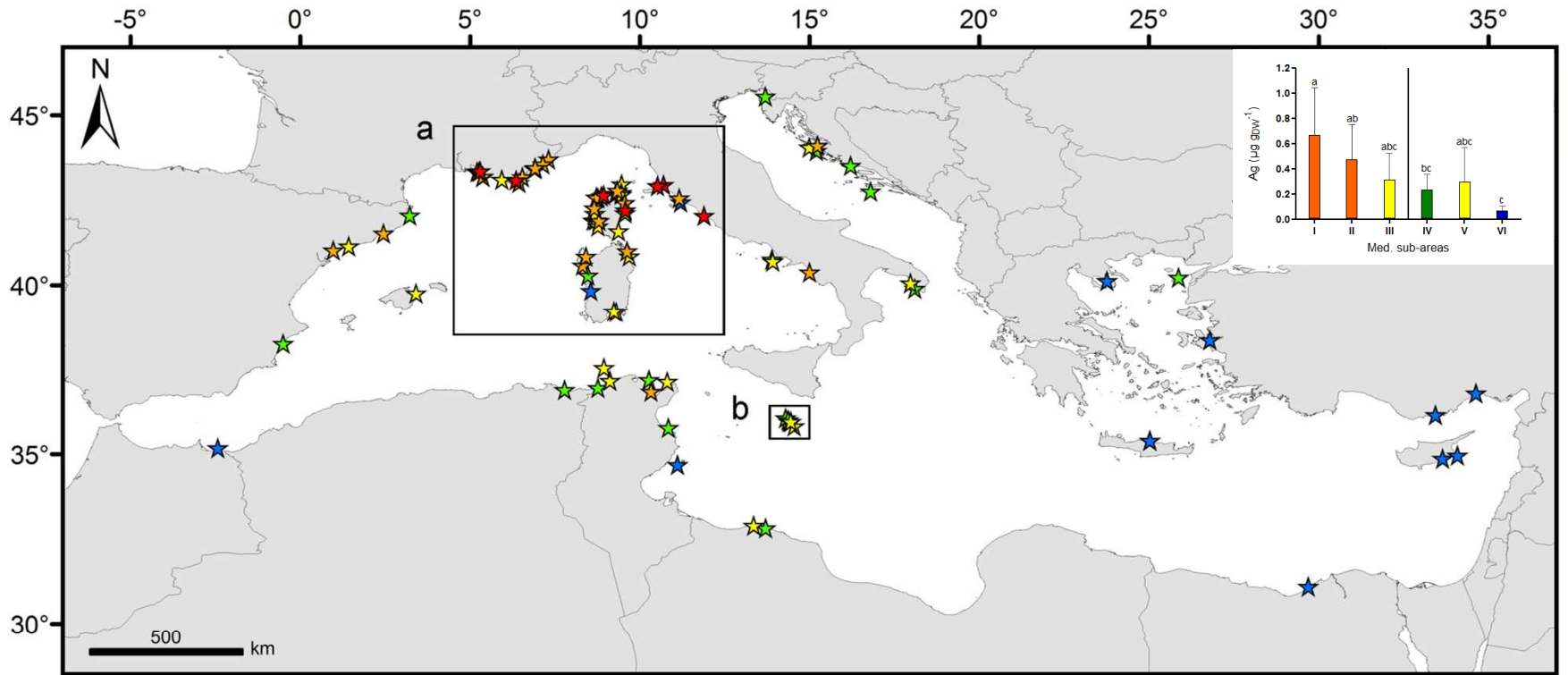
RESULTS - DISCUSSION



Cd



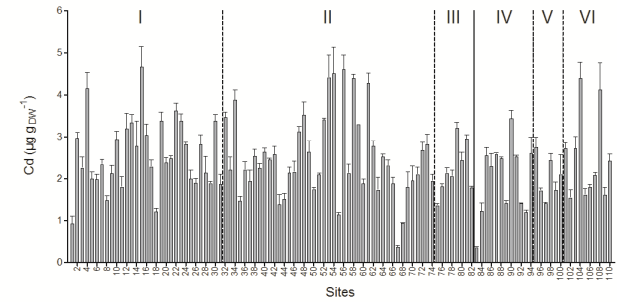
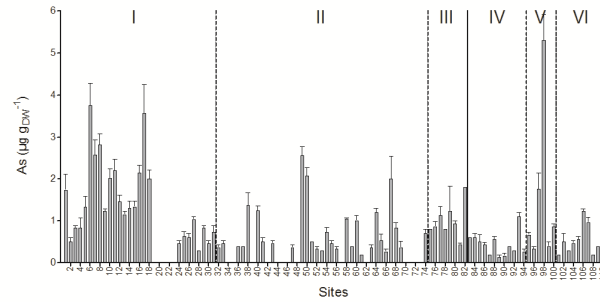
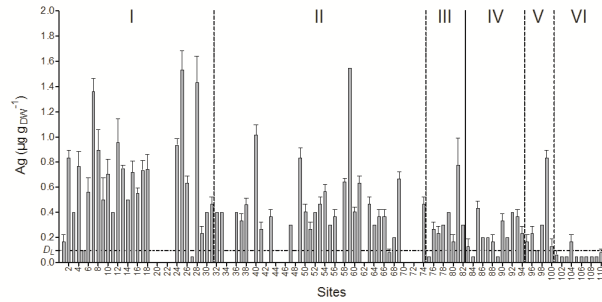
RESULTS - DISCUSSION



Ag

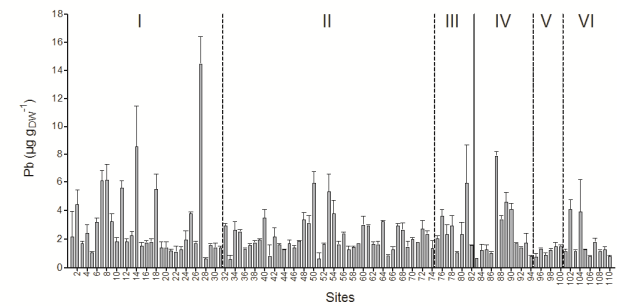
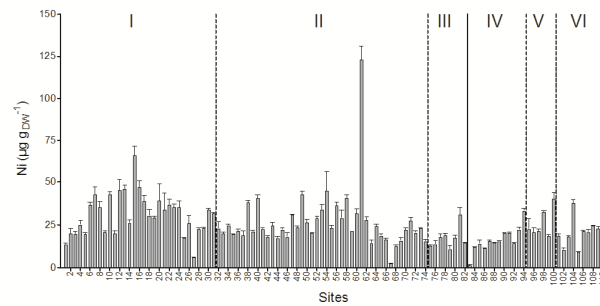
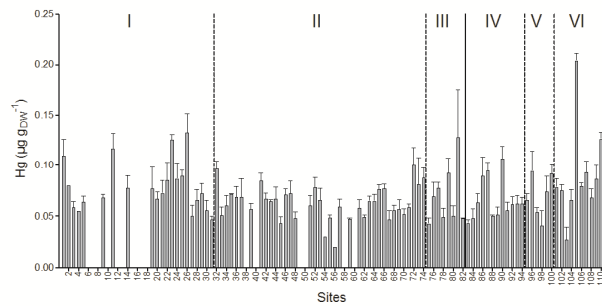
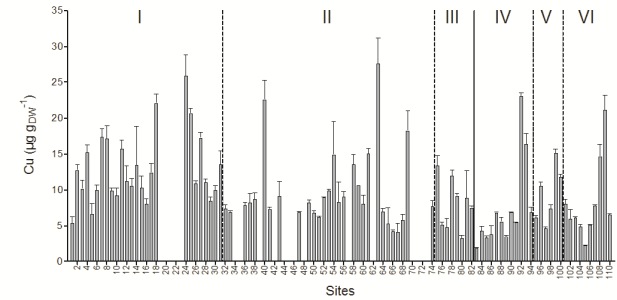


Maths and stats: pollution indices



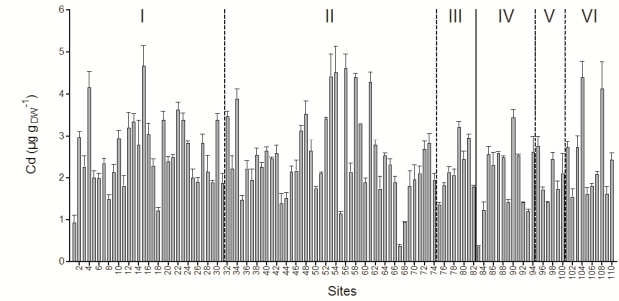
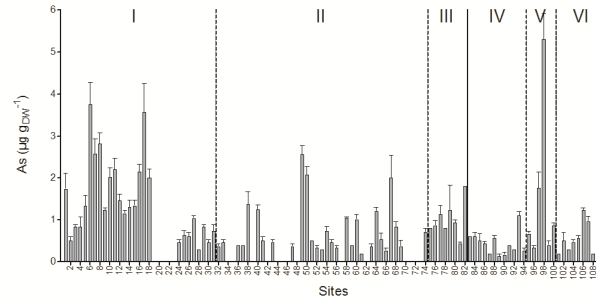
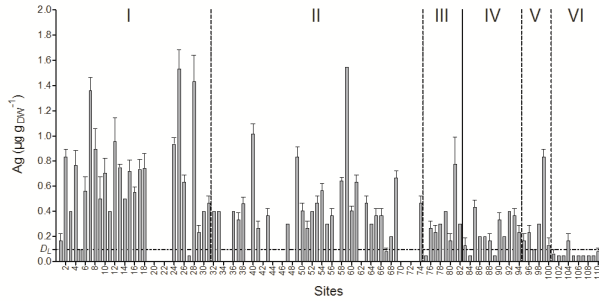
Pb Lead 82 207.20
Hg Mercury 80 200.59
Cu Copper 29 63.55
Ag Silver 47 107.87
As Arsenic 33 74.92
Ni Nickel 28 58.69
Cd Cadmium 48 112.41

PRODUCED BY THE FOUNDATION FOR EDUCATION, SCIENCE AND TECHNOLOGY FOR NATIONAL SET WEEK 2003





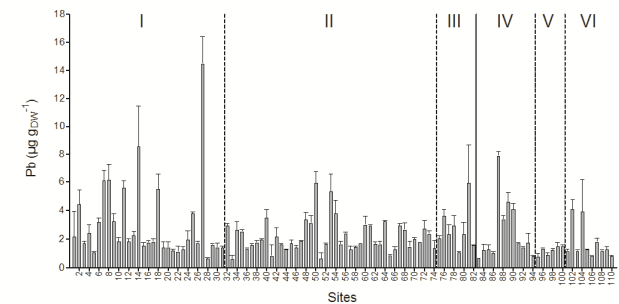
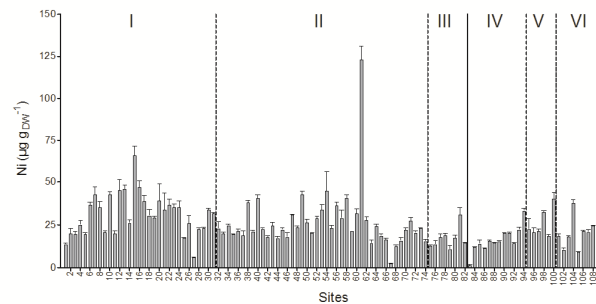
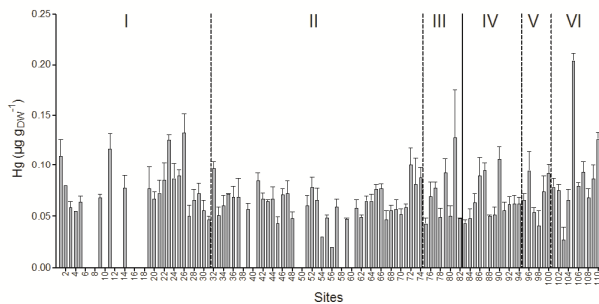
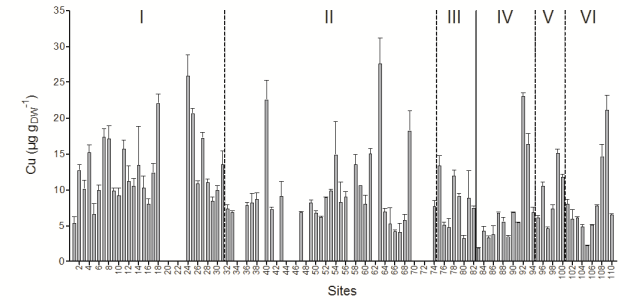
Maths and stats: pollution indices



❖ How to order and to compare TEs according to the overall spatial variability of their environmental levels through the whole of a studied area ?



❖ How to compare global pollution levels in TEs between several monitored sites ?

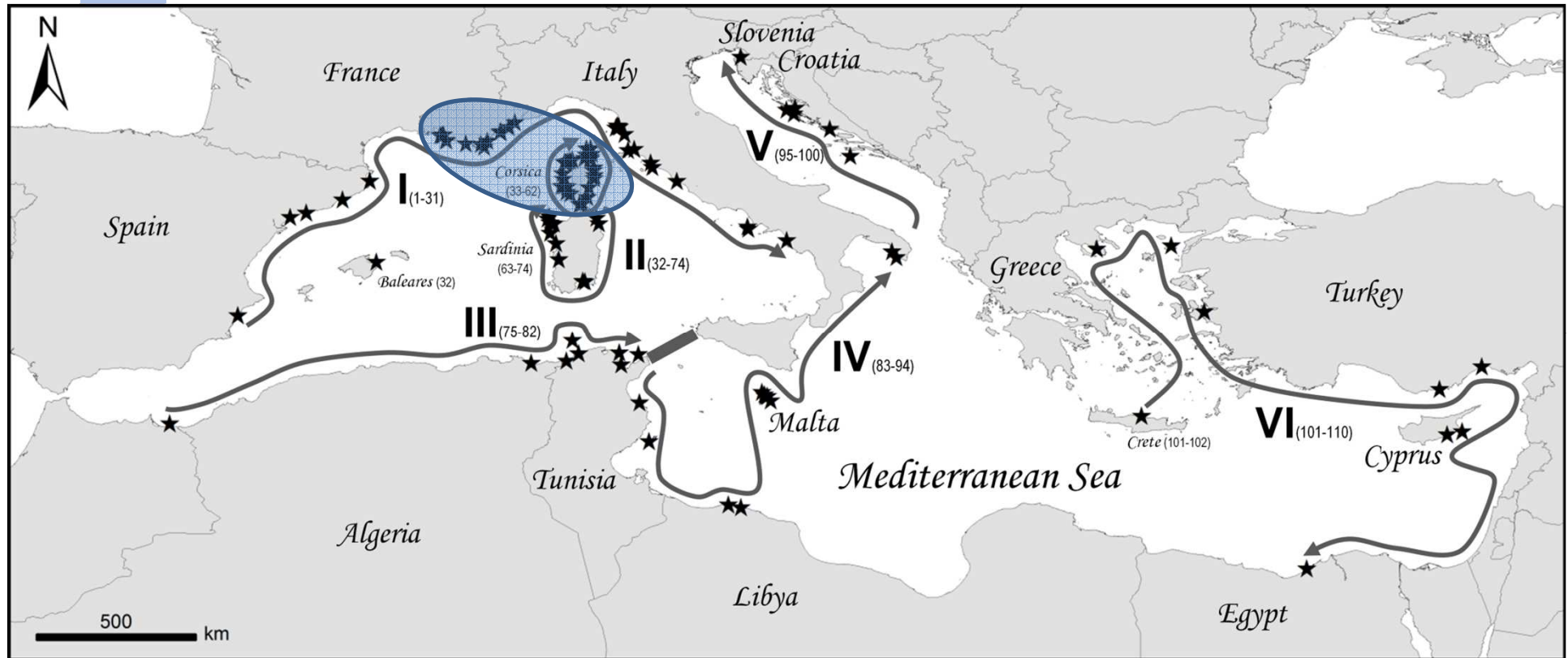




Sampling



Pollution indices developed first for the French Mediterranean littoral.



Marine Pollution Bulletin 89 (2014) 390–406

Contents lists available at [ScienceDirect](https://www.sciencedirect.com)

Marine Pollution Bulletin

journal homepage: www.elsevier.com/locate/marpolbul

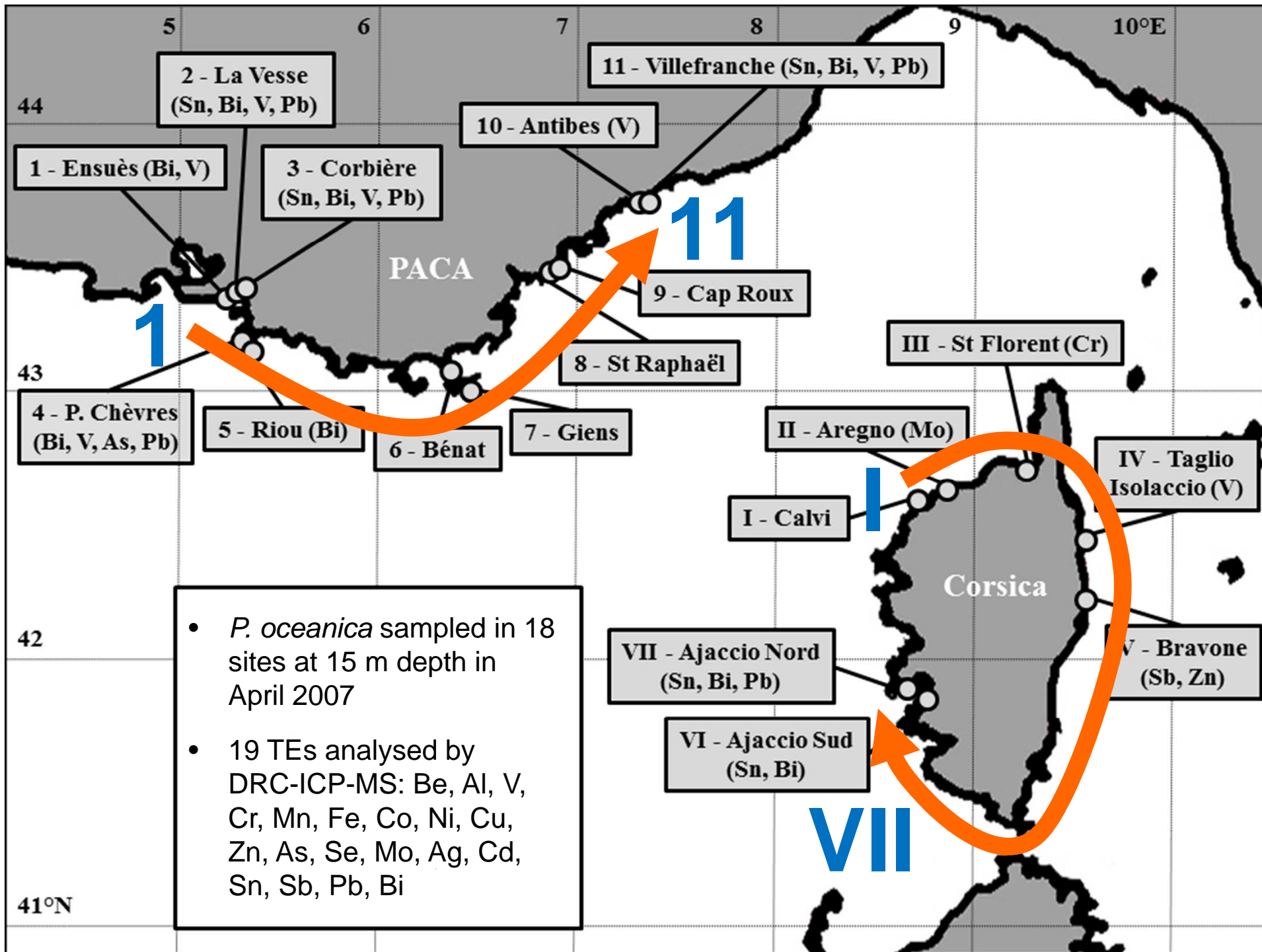


ELSEVIER

A reassessment of the use of *Posidonia oceanica* and *Mytilus galloprovincialis* to biomonitor the coastal pollution of trace elements: New tools and tips

J. Richir*, S. Gobert

Laboratory of Oceanology, MARE Centre, University of LIEGE, B6C, 4000 LIEGE, Sart Tilman, Belgium





Trace Element Spatial Variation Index


- ❖ How to order and to compare TEs according to the overall spatial variability of their environmental levels through the whole of a studied area ?

Trace Element Spatial Variation Index (TESVI)

$$\text{TESVI} = [(x_{\max}/x_{\min}) / (\sum(x_{\max}/x_i)/n)] * \text{SD}$$

where:

- x_{\max} and x_{\min} are the maximum and minimum mean concentrations recorded among the n sites,
- x_i are mean concentrations recorded in each of the n sites,
- SD is the standard deviation of the weighted sum $\sum(x_{\max}/x_i)/n$.

 The highest the index value, the more environmental levels of a TE globally vary (punctual contaminations and overall coastal spatial heterogeneity of TE levels taken into account) through the whole of the studied area the index is applied to.

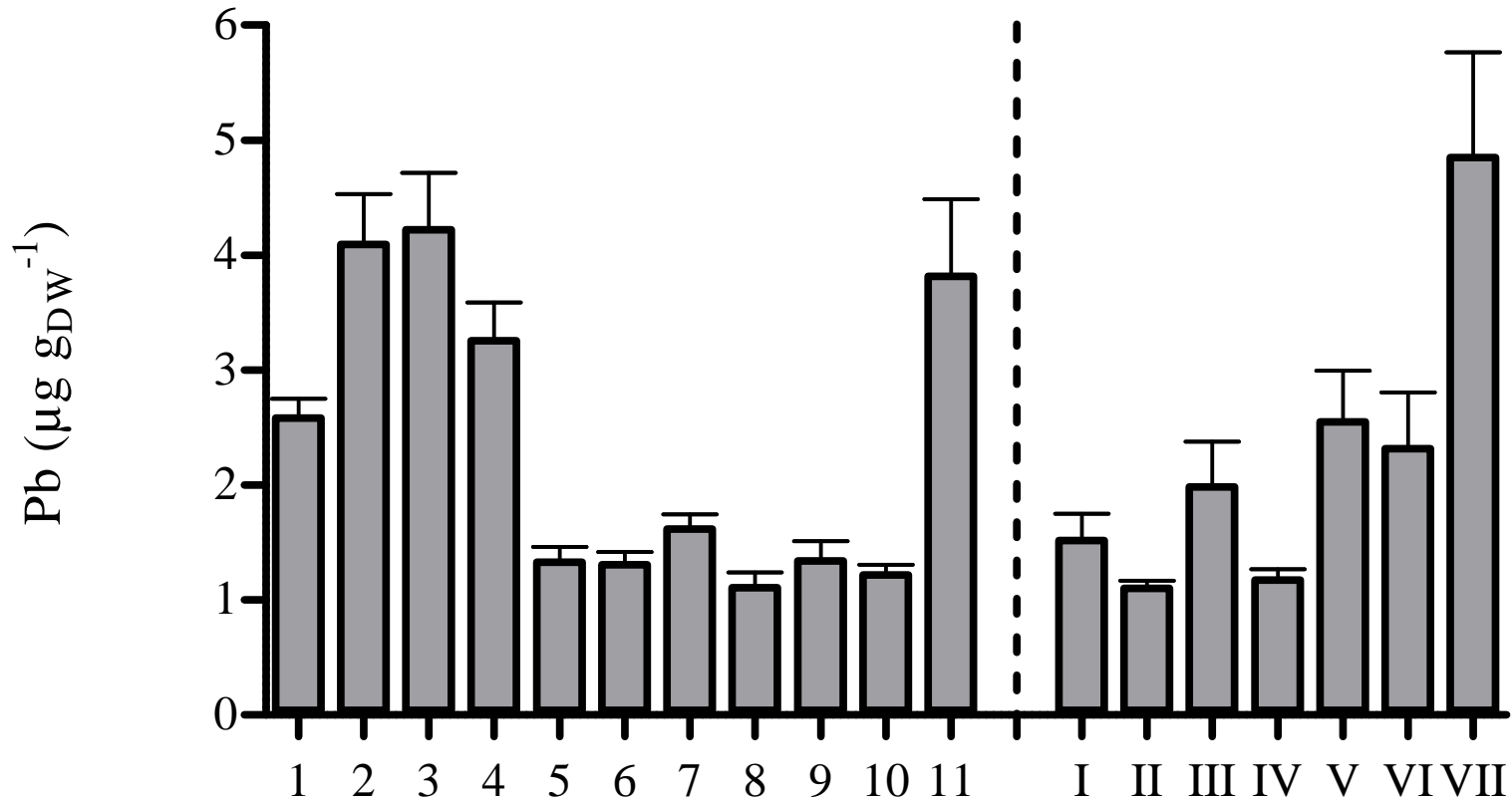


TESVI value calculation

Trace Element Spatial Variation Index (TESVI)

$$TESVI = [(x_{max}/x_{min}) / (\sum(x_{max}/x_i)/n)] * SD$$

TESVI



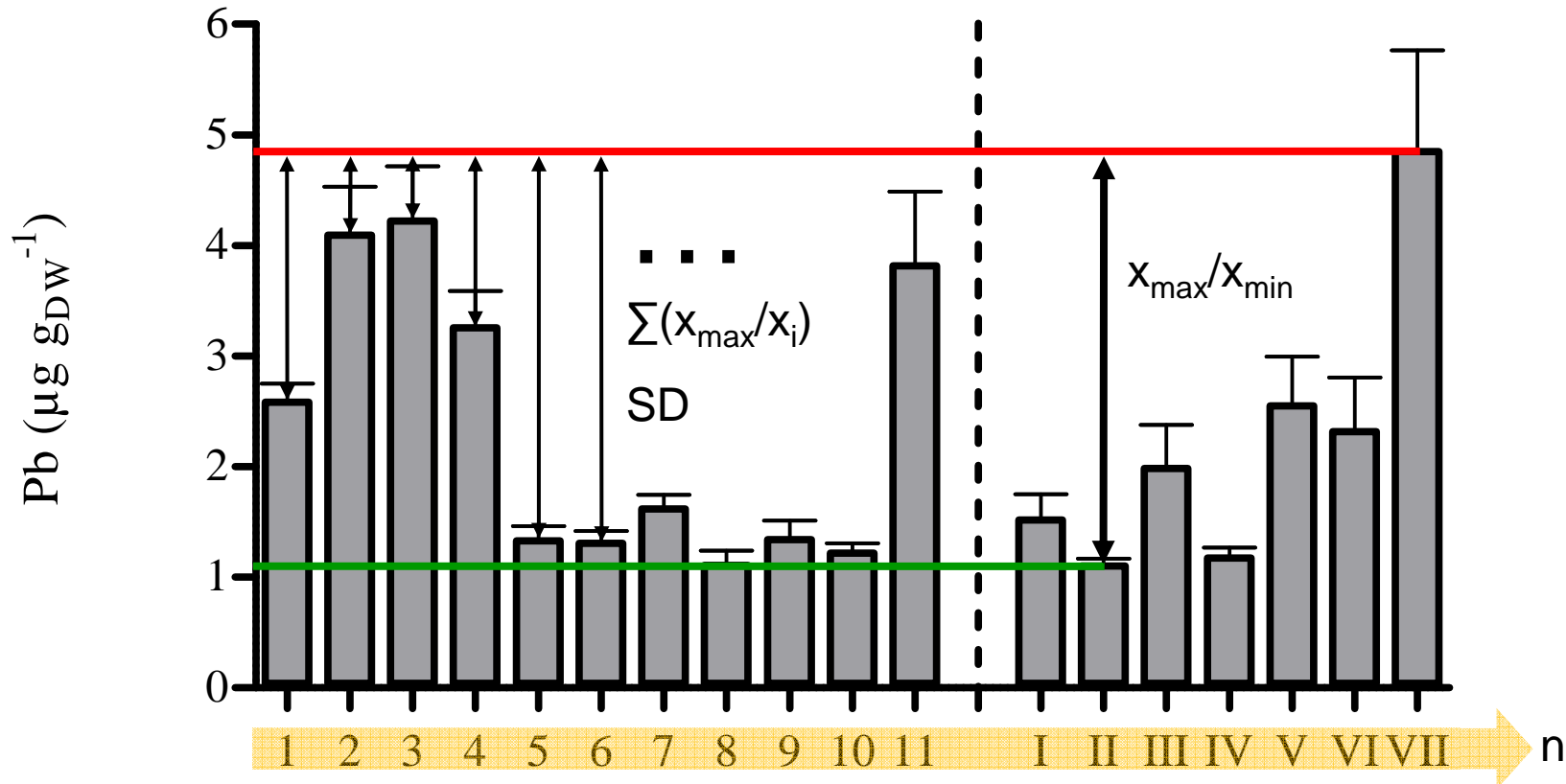


TESVI value calculation

Trace Element Spatial Variation Index (TESVI)

$$TESVI = [(x_{max}/x_{min}) / (\sum(x_{max}/x_i)/n)] * SD$$

T
E
S
V
I





TESVI graphical representation



T
E
S
V
I

A. TEs broadly monitored with *P. oceanica*

	x_{max}/x_{min}	$\sum(x_{max}/x_i)/18 \pm SD$	TESVI	Site x_{max}
Cr	6.0	3.6 ± 1.3	2.2	St Florent
Fe	4.4	2.0 ± 0.9	1.9	Bravone
Ni	2.4	1.6 ± 0.3	0.5	St Raphaël
Cu	3.4	1.9 ± 0.7	1.2	Villefranche
Zn	19.6	13.3 ± 4.4	6.5	Bravone
Cd	3.9	1.9 ± 0.7	1.4	St Raphaël
Pb	4.4	2.7 ± 1.2	2.0	Ajaccio N.
Be	3.1	1.6 ± 0.6	1.0	Ajaccio N.
Al	7.5	2.2 ± 1.8	6.1	Ajaccio N.
V	14.5	5.9 ± 5.0	12.3	Antibes
Mn	2.2	1.6 ± 0.4	0.5	St Raphaël
Co	2.9	1.8 ± 0.5	0.7	St Raphaël
As	10.6		4.9	P. des Chèvres
Se	1.7		0.3	Calvi
Mo	22.8		10.5	Aregno
Ag	3.1		0.9	La Vesse
Sn (BAL)	6.9		3.8	Corbière
Sb	4.4	3.6 ± 0.7	0.9	Bravone
Bi	13.6	6.1 ± 3.5	7.9	P. des Chèvres

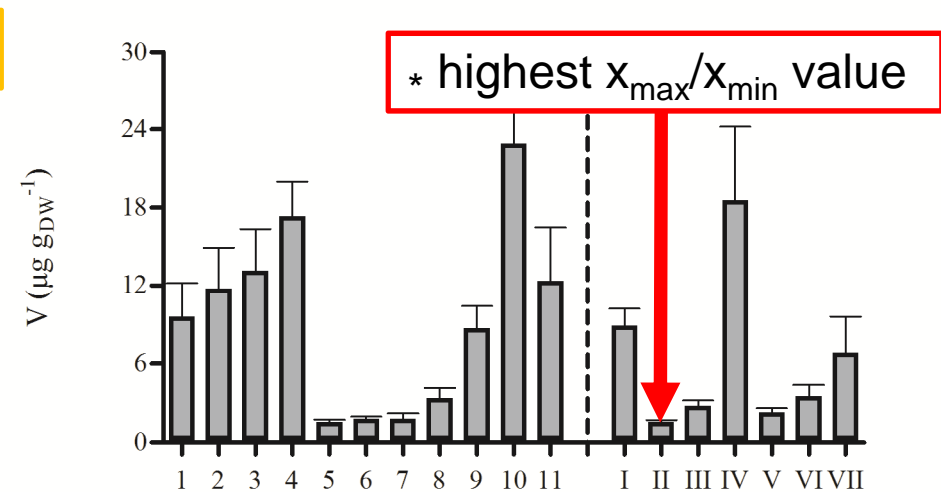
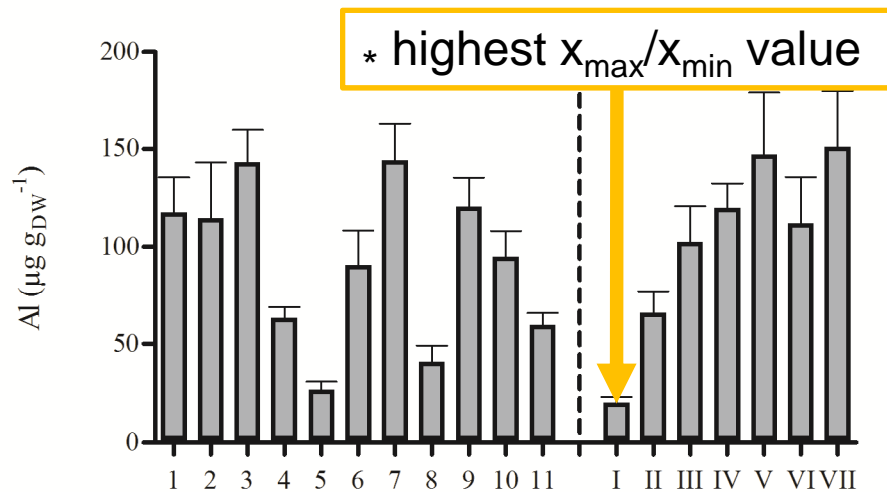
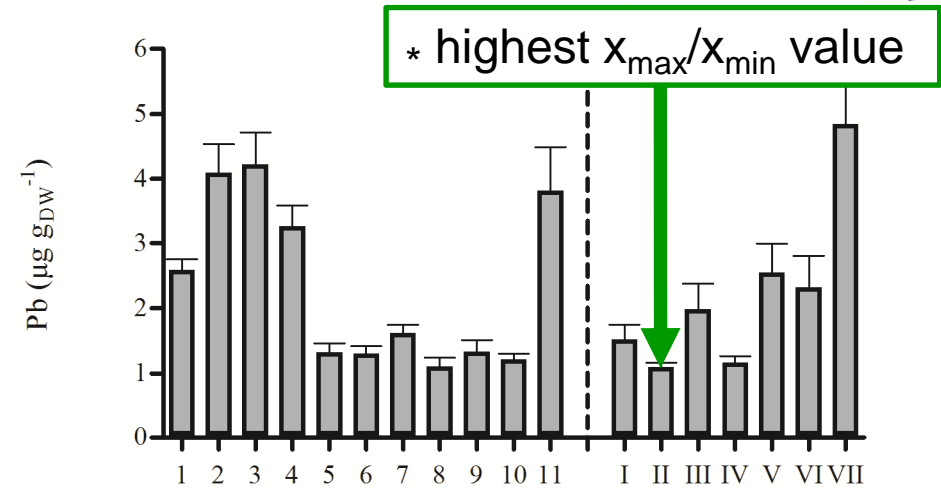
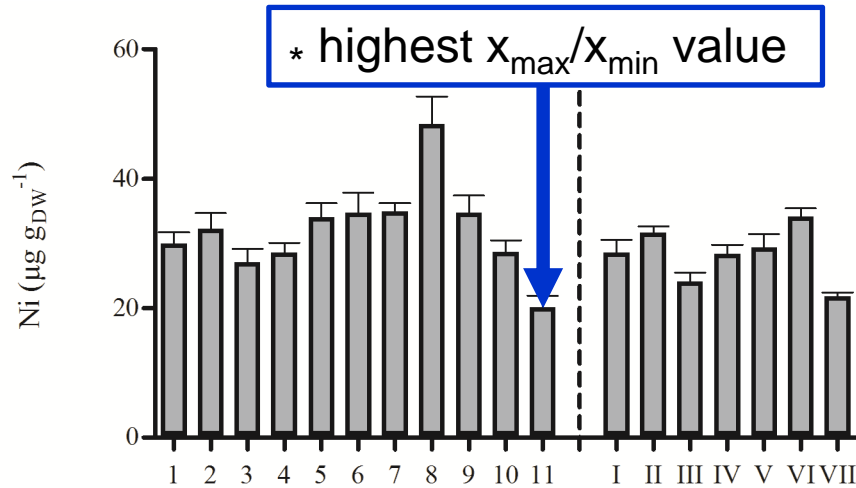
22.8

TESVI values were listed in ascending order :

Se, Ni, Mn, Co, Sb, Ag, Be, Cu, Cd, Fe, Pb, Cr, Sn, As, Al, Zn, Bi, Mo, V



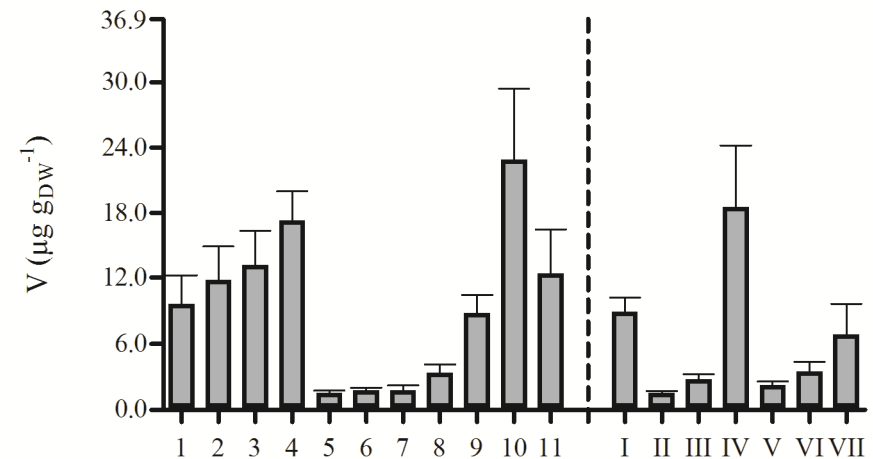
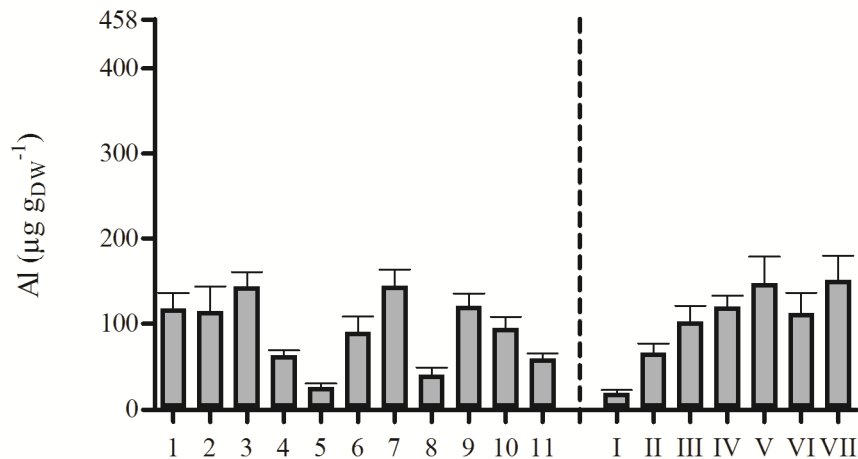
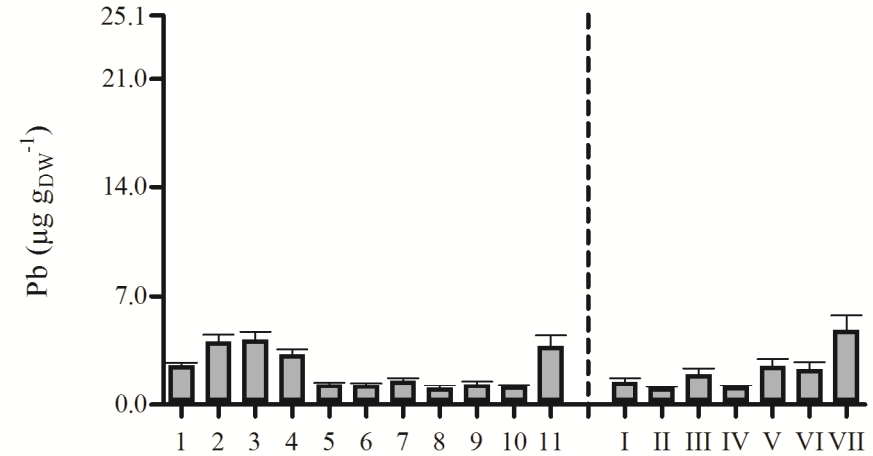
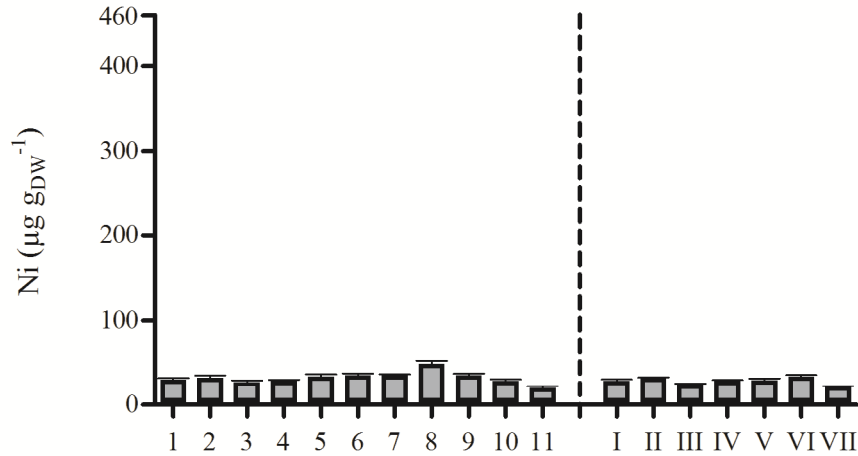
TESVI graphical representation



TESVI values were listed in ascending order :
 Se, Ni, Mn, Co, Sb, Ag, Be, Cu, Cd, Fe, Pb, Cr, Sn, As, Al, Zn, Bi, Mo, V



TESVI graphical representation



TESVI values were listed in ascending order :

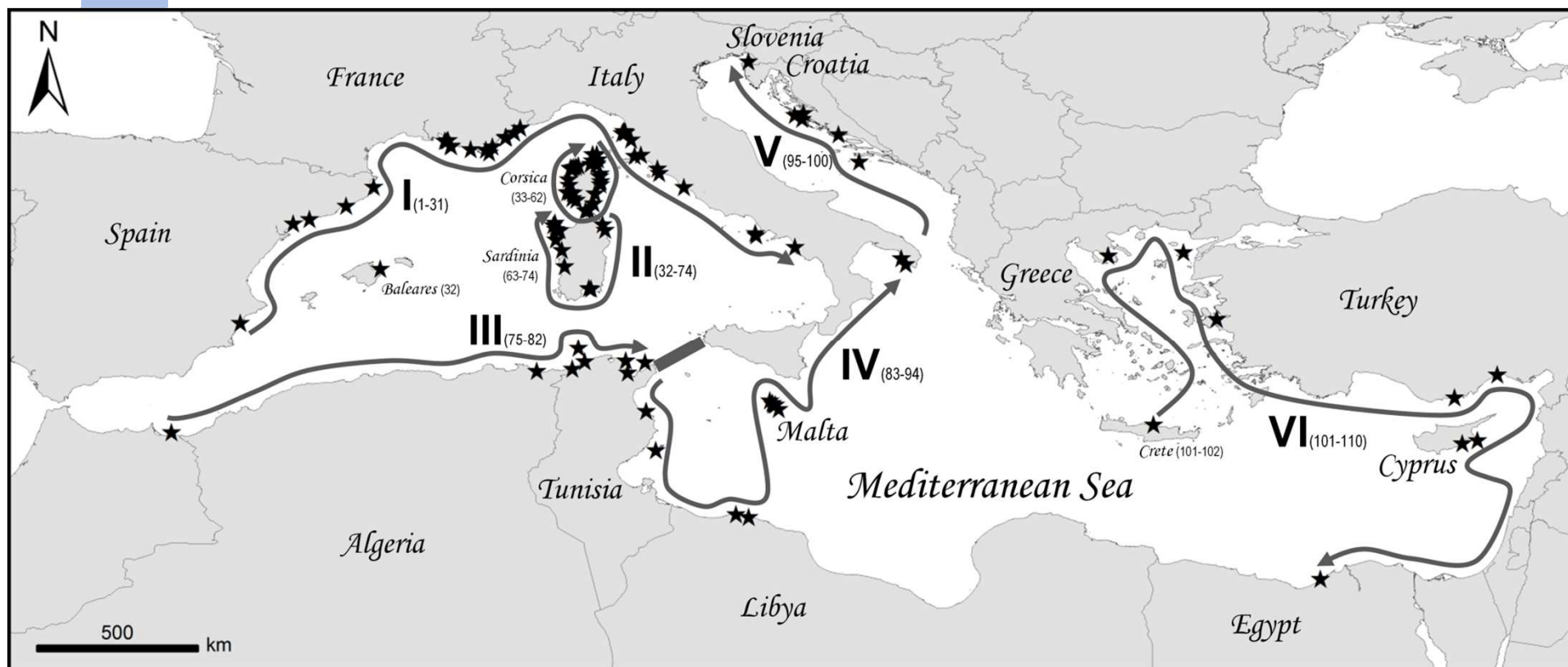
Se, Ni, Mn, Co, Sb, Ag, Be, Cu, Cd, Fe, Pb, Cr, Sn, As, Al, Zn, Bi, Mo, V



Sampling

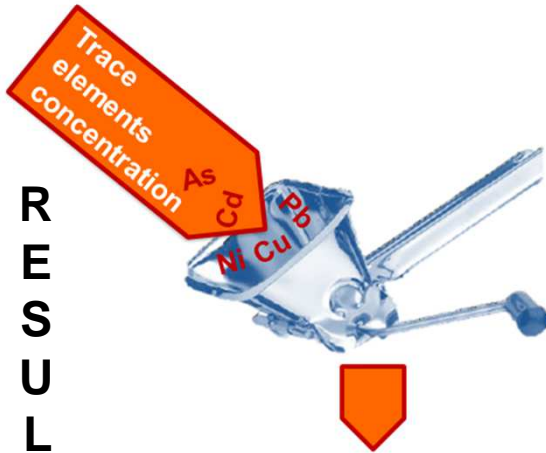


110 sites differing by their levels of exposure to contaminants sampled for *P. oceanica*.

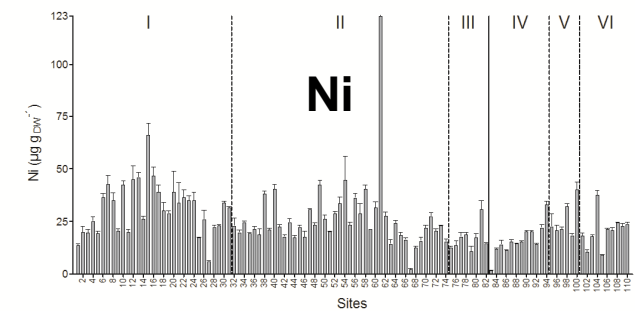
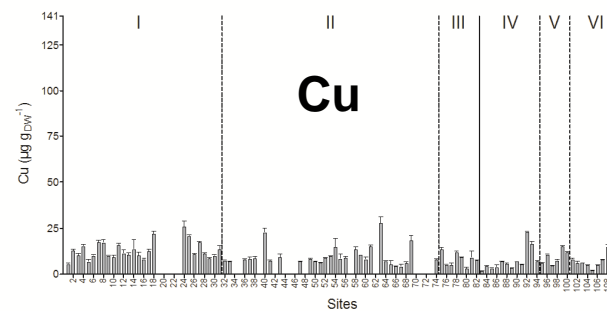
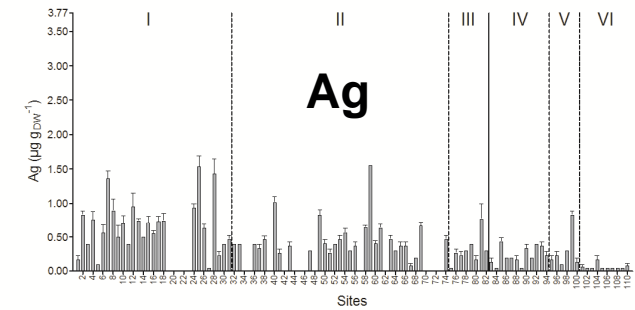
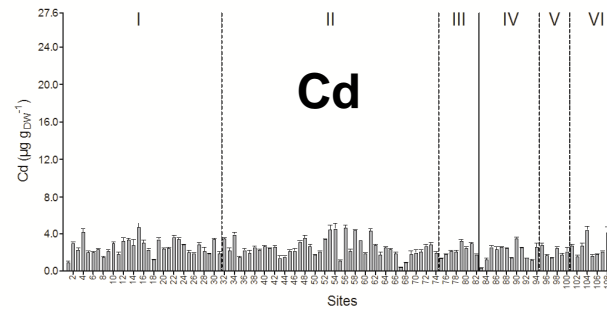
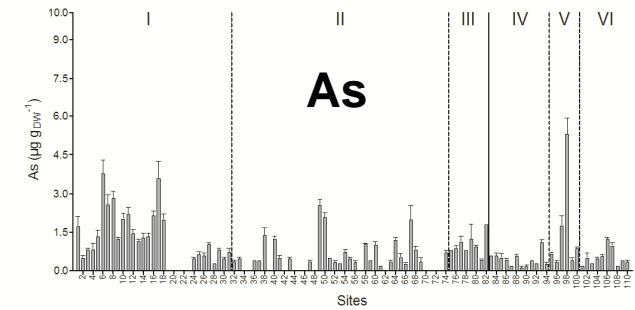
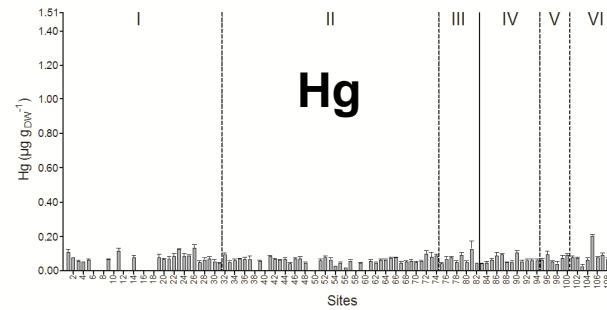
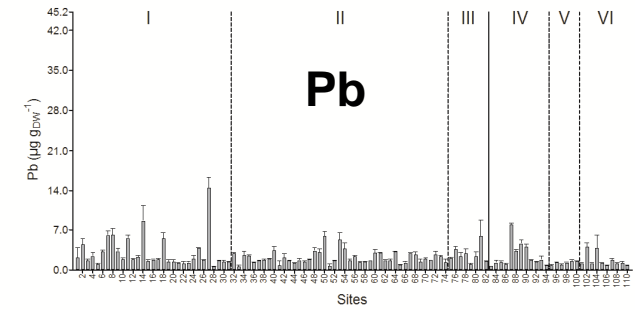




Spatial variability



Proportional ordinate scaling between TEs:



RESULTS - DISCUSSION

TE	TESVI
Hg	3.9
Cd	8.7
Cu	9.2
Pb	13.3
As	29.4
Ag	34.9
Ni	92.7



Trace Element Pollution Index



How to compare global pollution levels in TEs between several monitored sites ?

Trace Element Pollution Index (TEPI)

$$\text{TEPI} = (Cf_1 * Cf_2 \dots Cf_n)^{1/n},$$

a weighted version of the Metal Pollution Index (MPI) of Usero et al. (1996, MPB)

where:

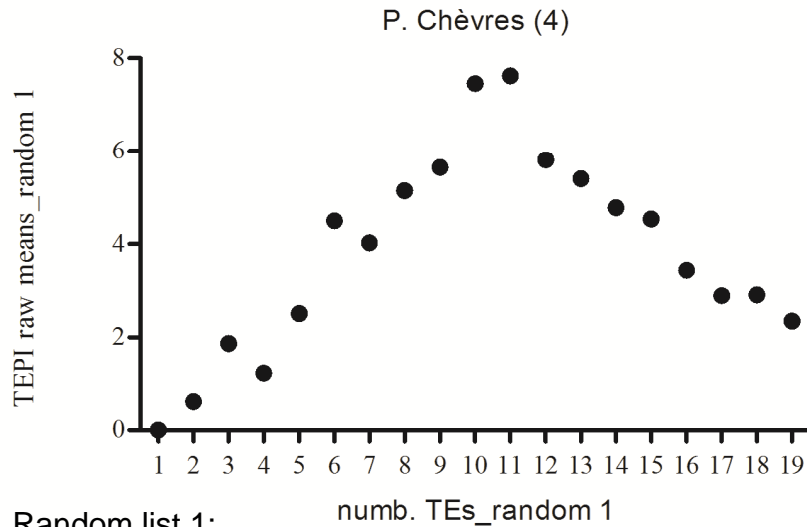
- Cf_n is the mean normalized concentration of the TE n in a given monitored site.

The highest the index value, the more the monitored site is globally contaminated in TEs compared to the others.

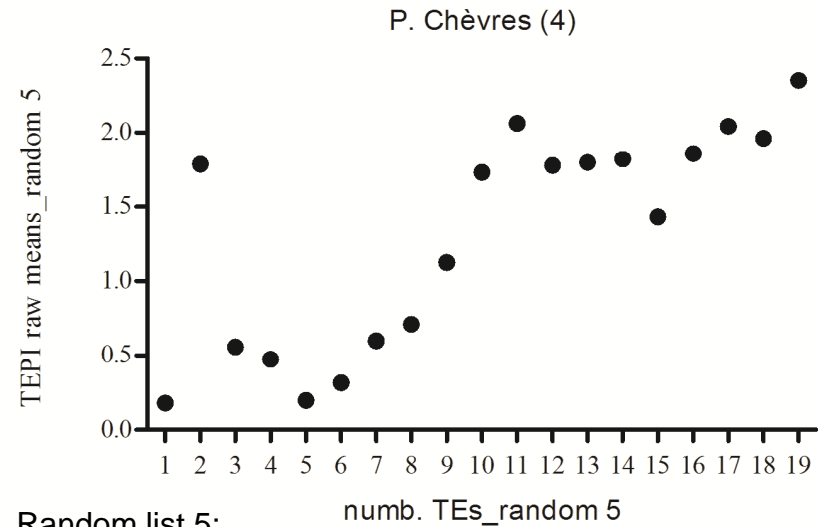
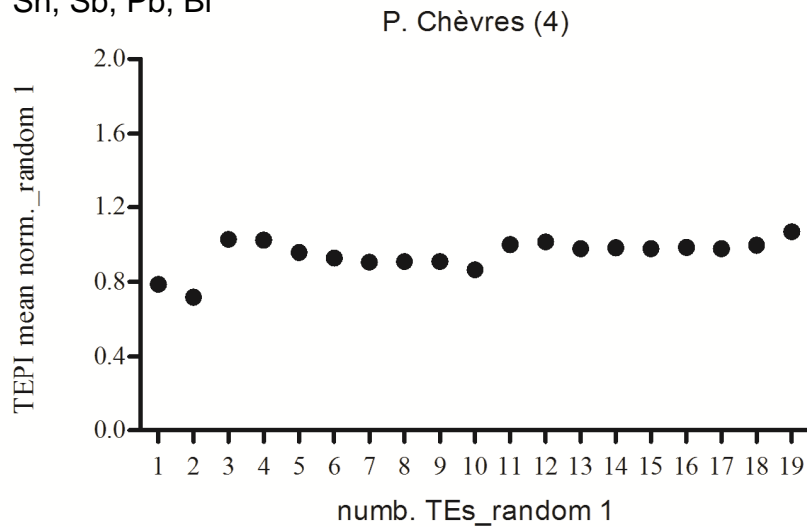
T
E
P
I



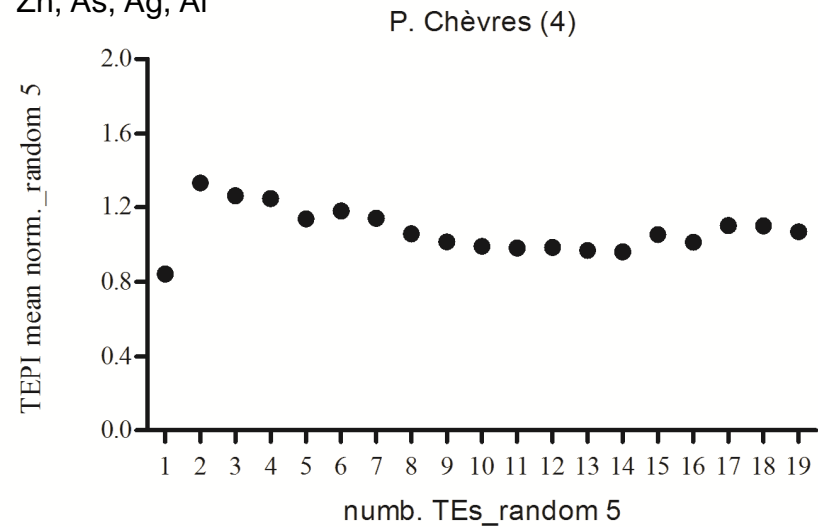
Mean normalization



Random list 1:
 Be, Al, V, Cr, Mn, Fe, Co, Ni, Cu, Zn, As, Se, Mo, Ag, Cd, Sn, Sb, Pb, Bi

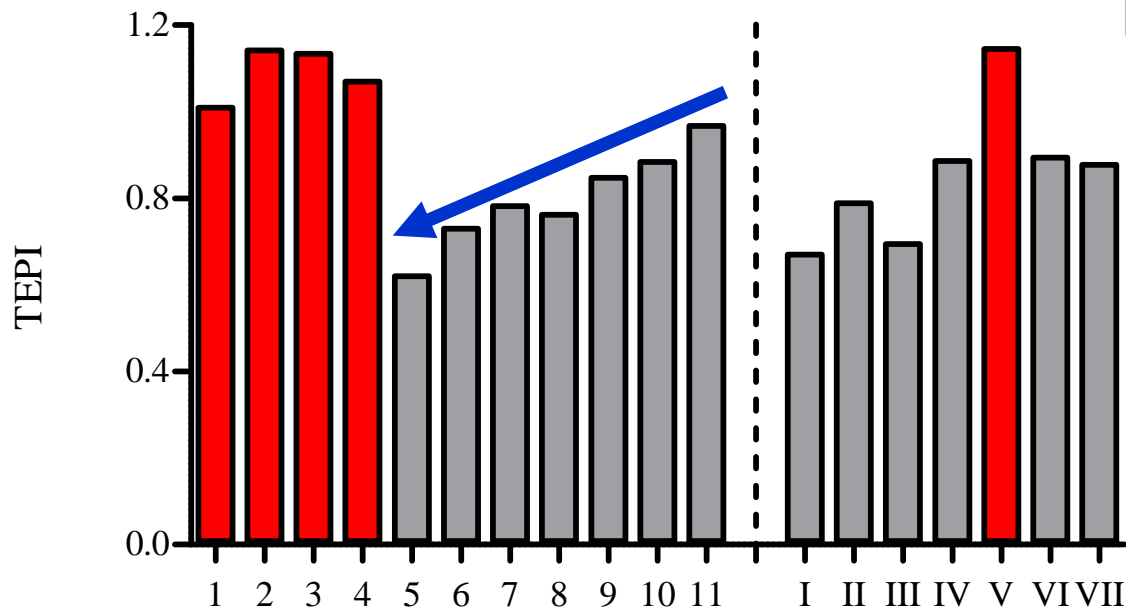
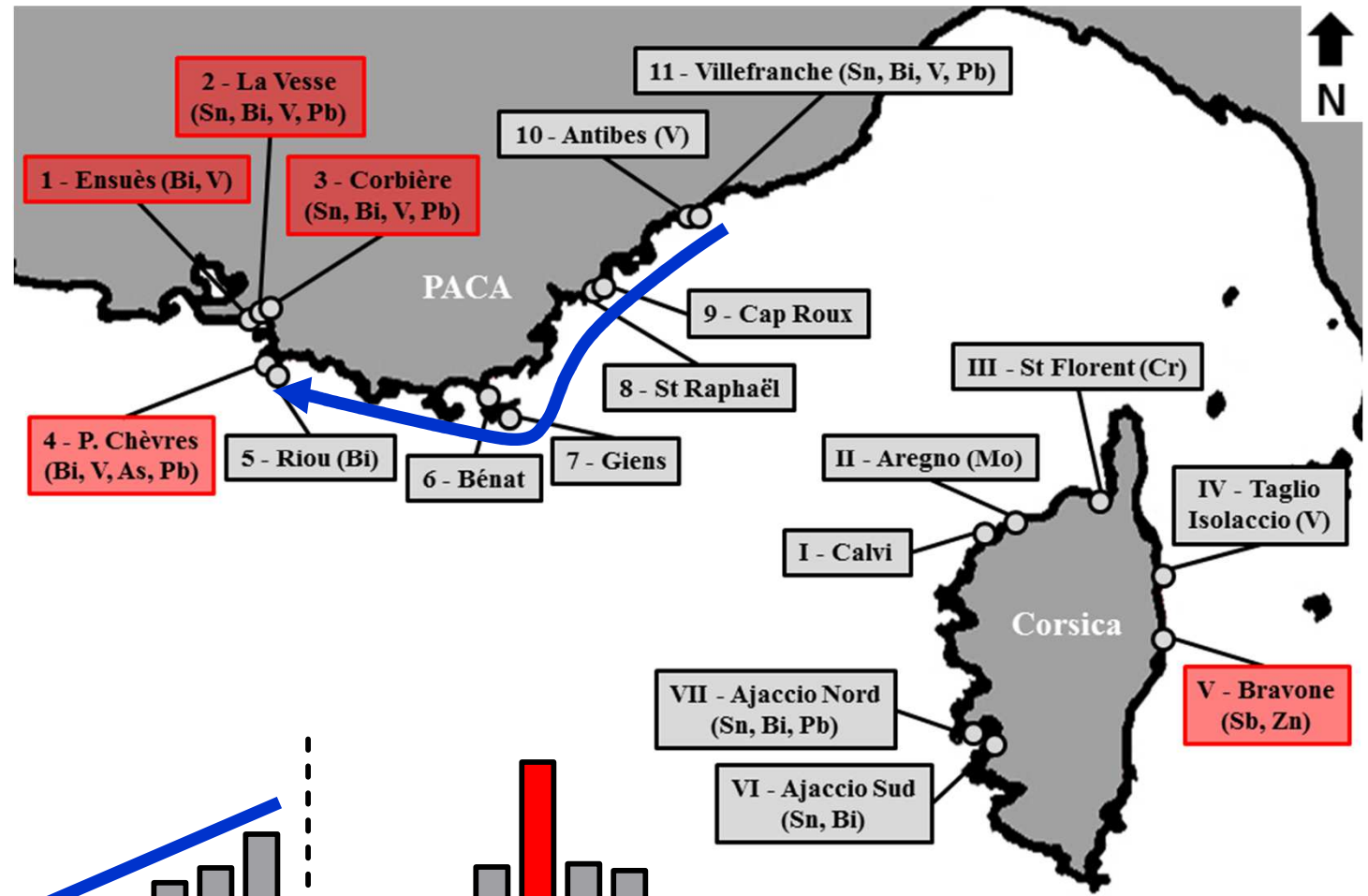


Random list 5:
 Sb, V, Sn, Se, Be, Pb, Ni, Mo, Mn, Fe, Cu, Cr, Co, Cd, Bi, Zn, As, Ag, Al





P. oceanica

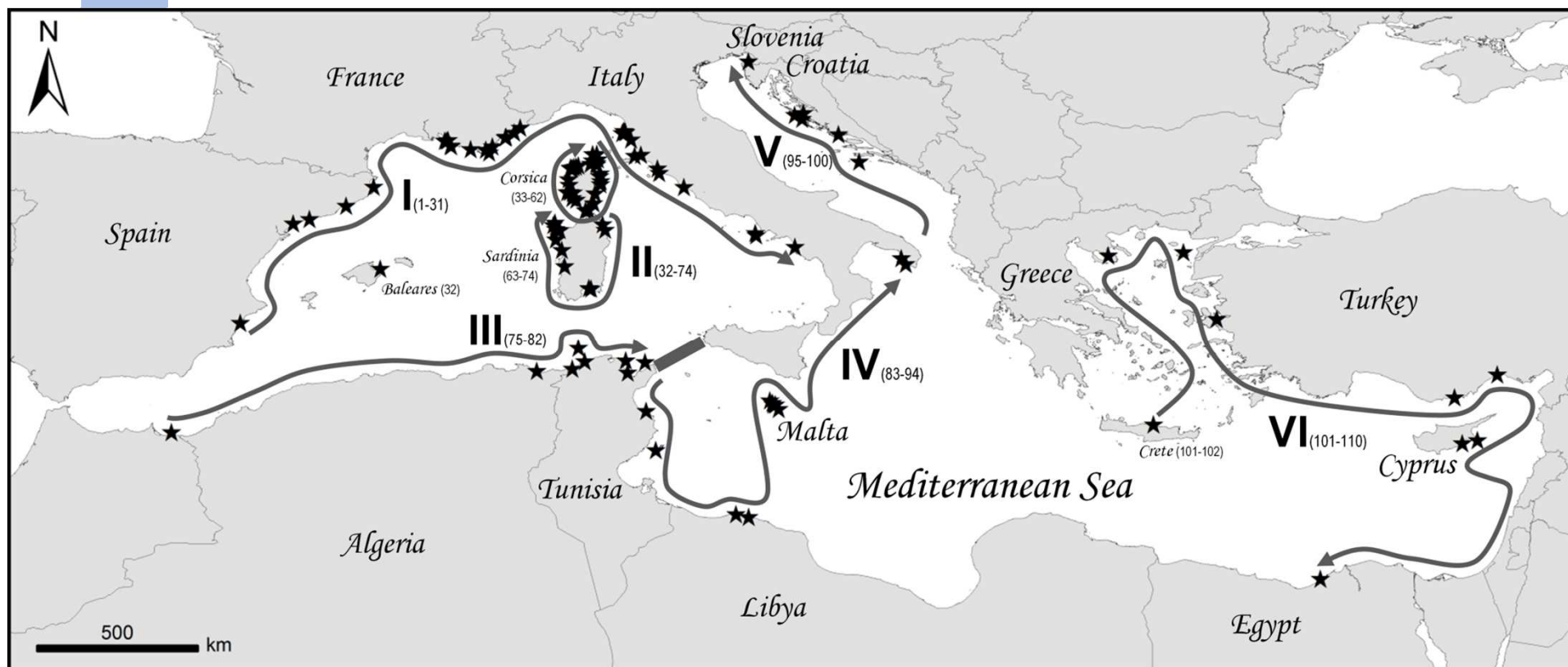




Sampling

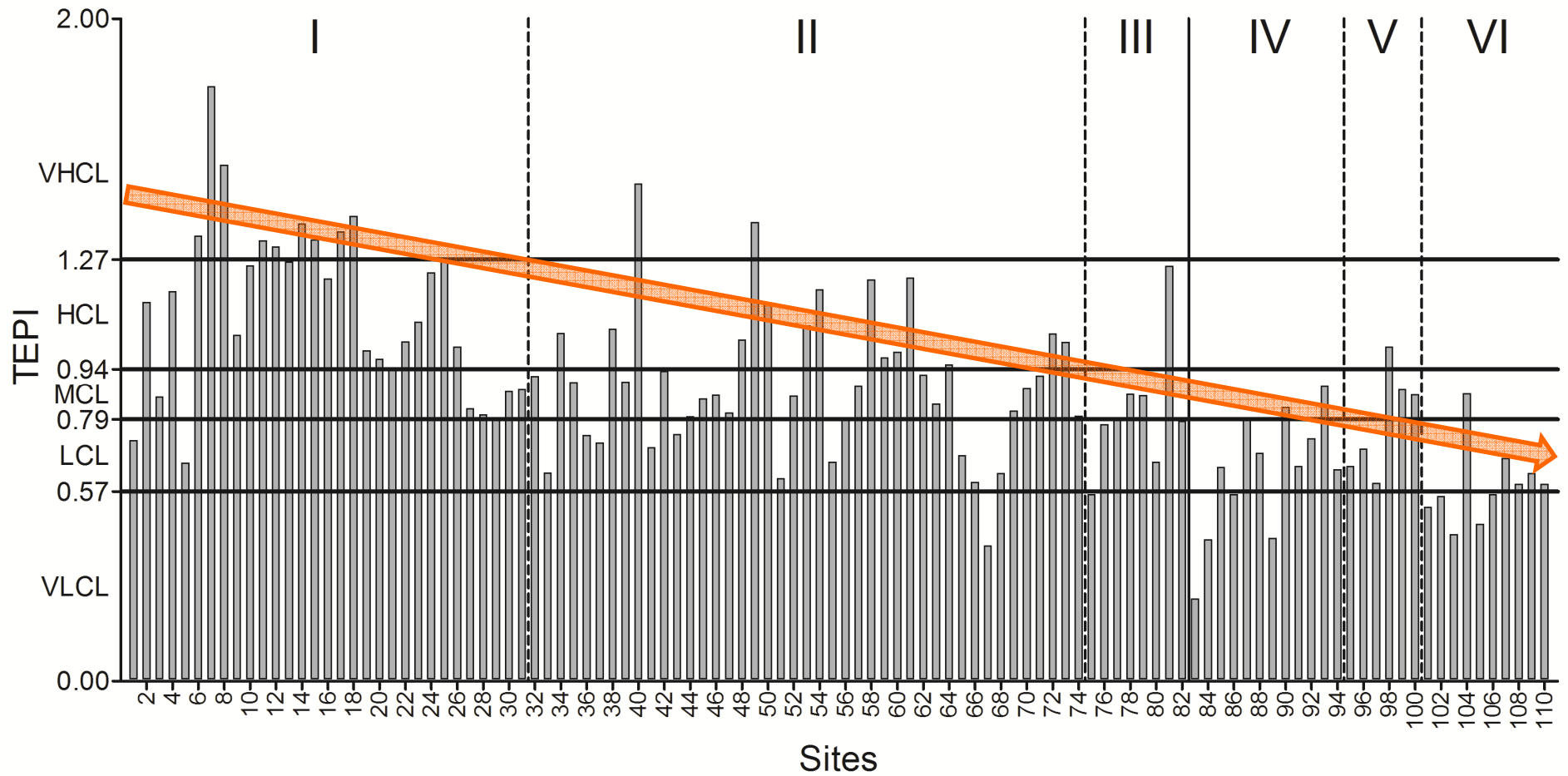


110 sites differing by their levels of exposure to contaminants sampled for *P. oceanica*.



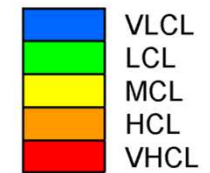
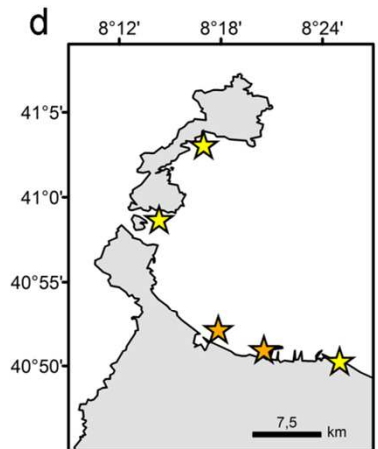
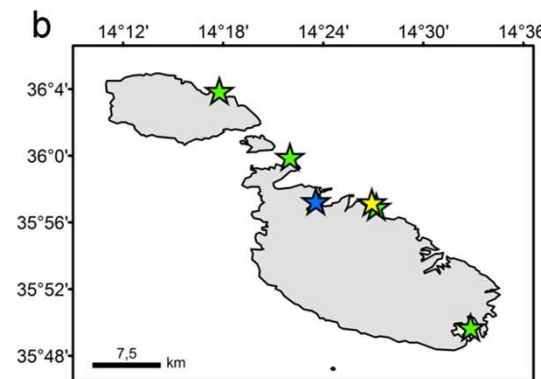
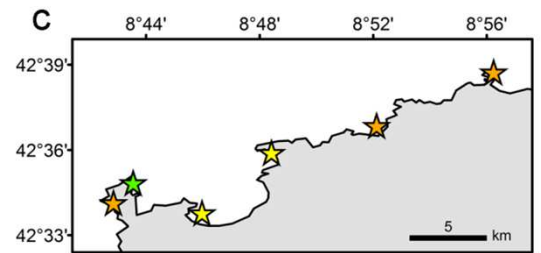
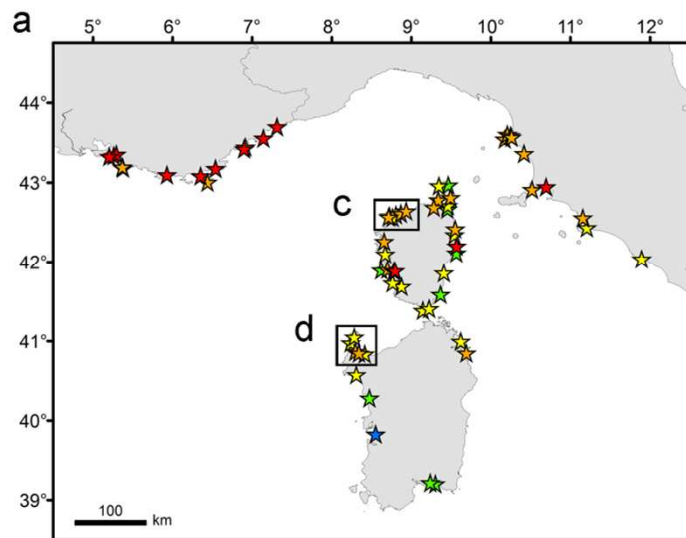
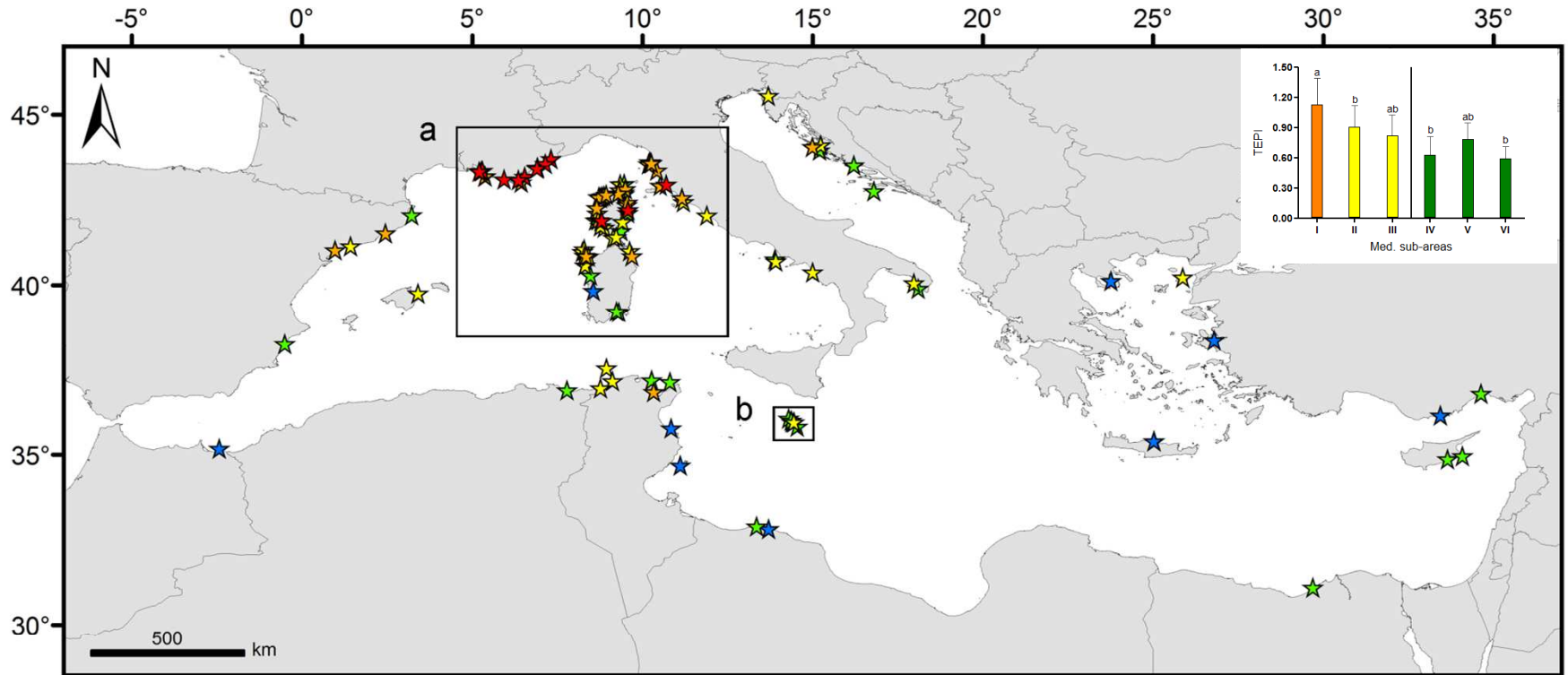


Global contamination





RESULTS - DISCUSSION



TEPI



Maths and stats: monitoring

M
A
T
E
R
I
A
L

- ❖ Water quality scale
- ❖ Contamination indices:
 - Trace Element Spatial Variation Index (TESVI)
 - Trace Element Pollution Index (TEPI)

- Maths and stats: spatial analysis

M
E
T
H
O
D
S

- ❖ GIS mapping
- ❖ Principal component analysis
- ❖ Cluster analysis
- ❖ Correlation analysis



Principal component analysis

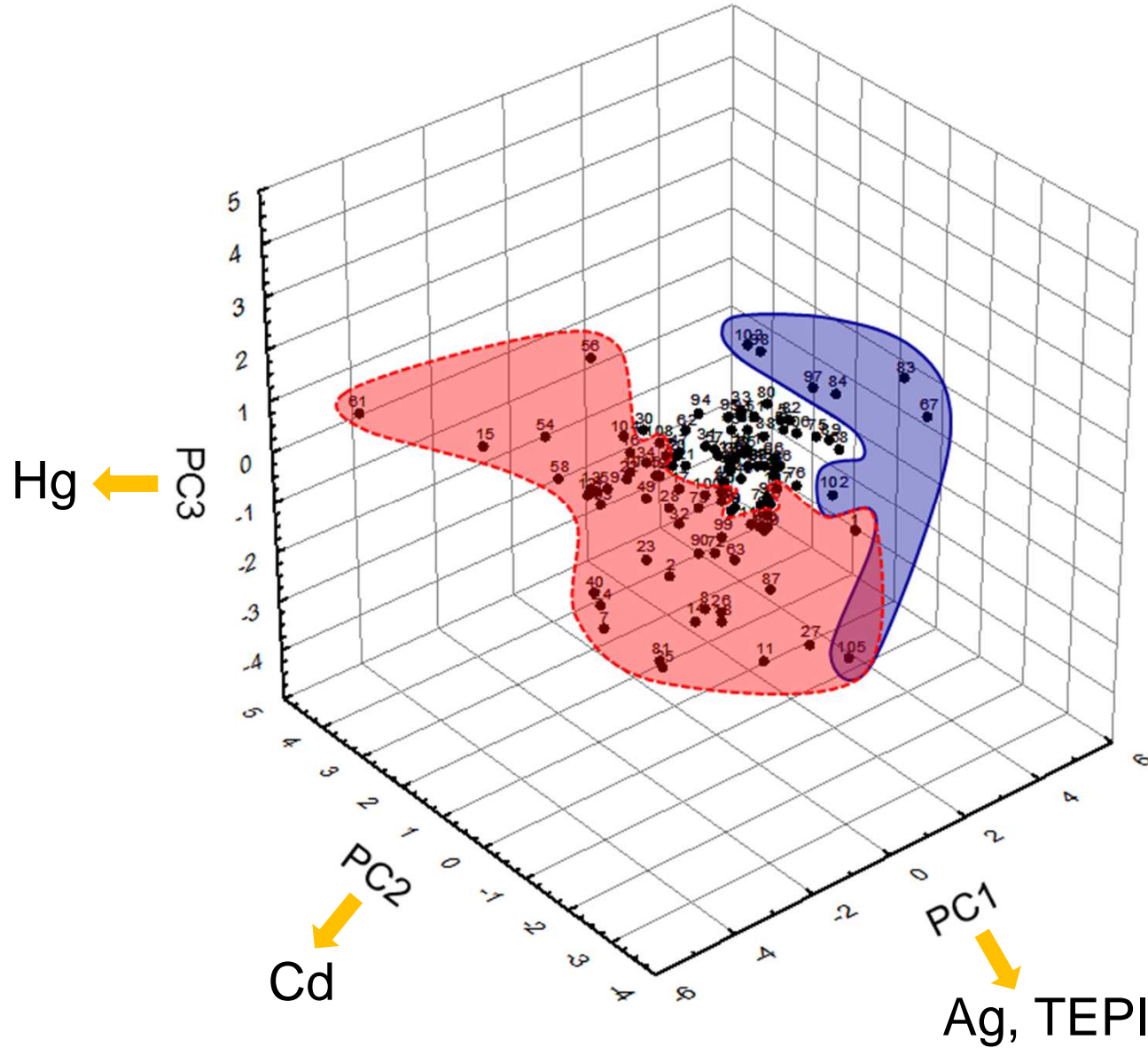
UMONS



STAR
AR
ED



R
E
S
U
L
T
S
-
D
I
S
C
U
S
S
I
O
N





Correlation analysis

RESULTS - DISCUSSION

	Ag	As	Cd	Cu	Hg	Ni	Pb	TEPI
Ag	1.000							
As	0.204	1.000						
Cd	<u>0.291</u>	-0.168	1.000					
Cu	<u>0.549</u>	0.096	0.084	1.000				
Hg	0.008	-0.074	-0.043	-0.047	1.000			
Ni	0.464	0.178	0.625	0.425	0.006	1.000		
Pb	0.294	0.252	0.110	0.261	-0.014	0.126	1.000	
TEPI	0.777	0.512	0.383	0.539	0.132	0.686	0.518	1.000

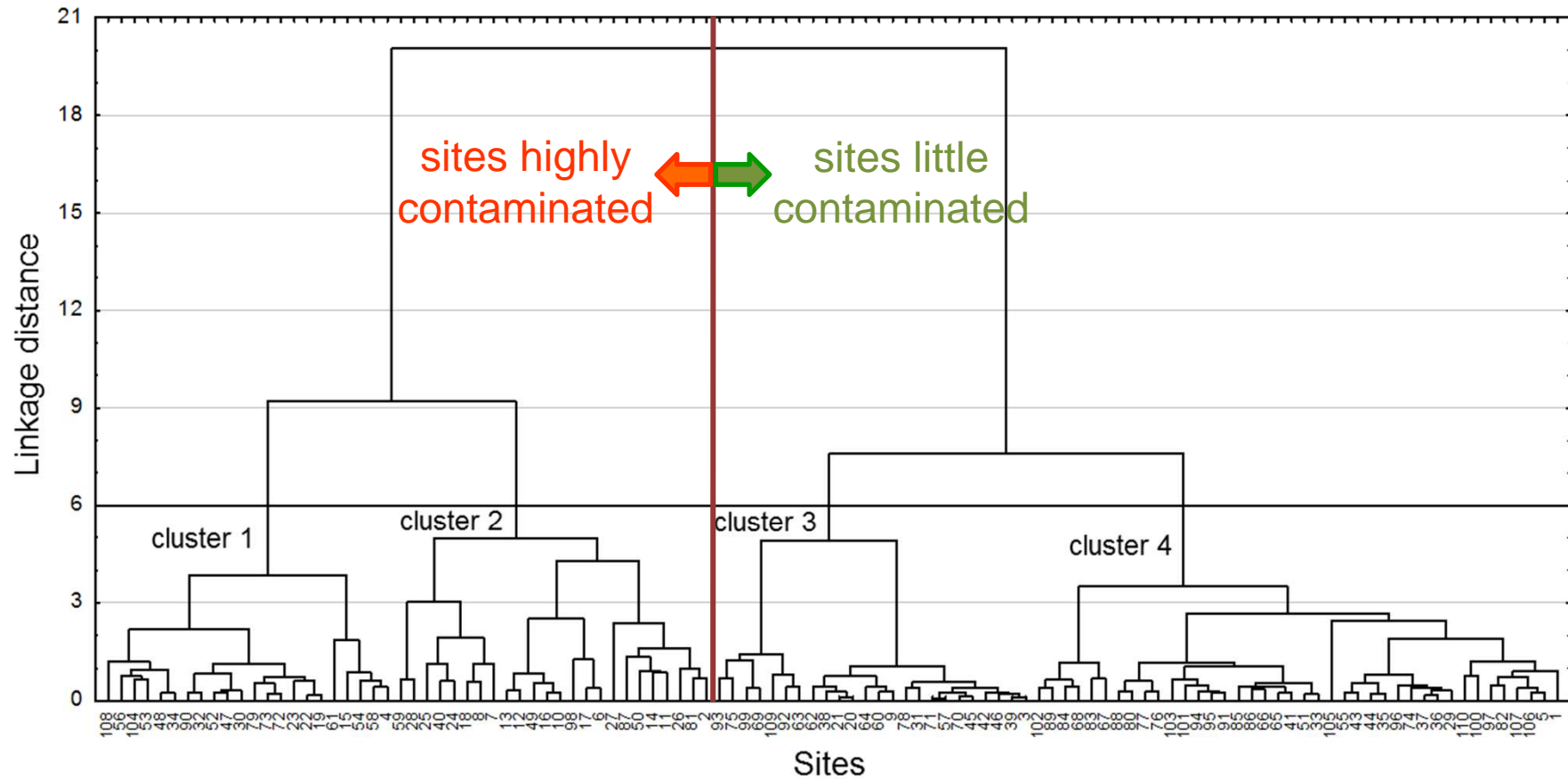
Correlation matrix of parametric Pearson's correlation coefficients and non-parametric Spearman's rank correlation coefficients between TE concentrations and TEPI values in *P. oceanica*. Correlations significant at $p < 0.05$ are in bold; correlations significant at $p < 0.01$ are in bold underlined.





Cluster analysis

R
E
S
U
L
T
S
-
D
I
S
C
U
S
S
I
O
N



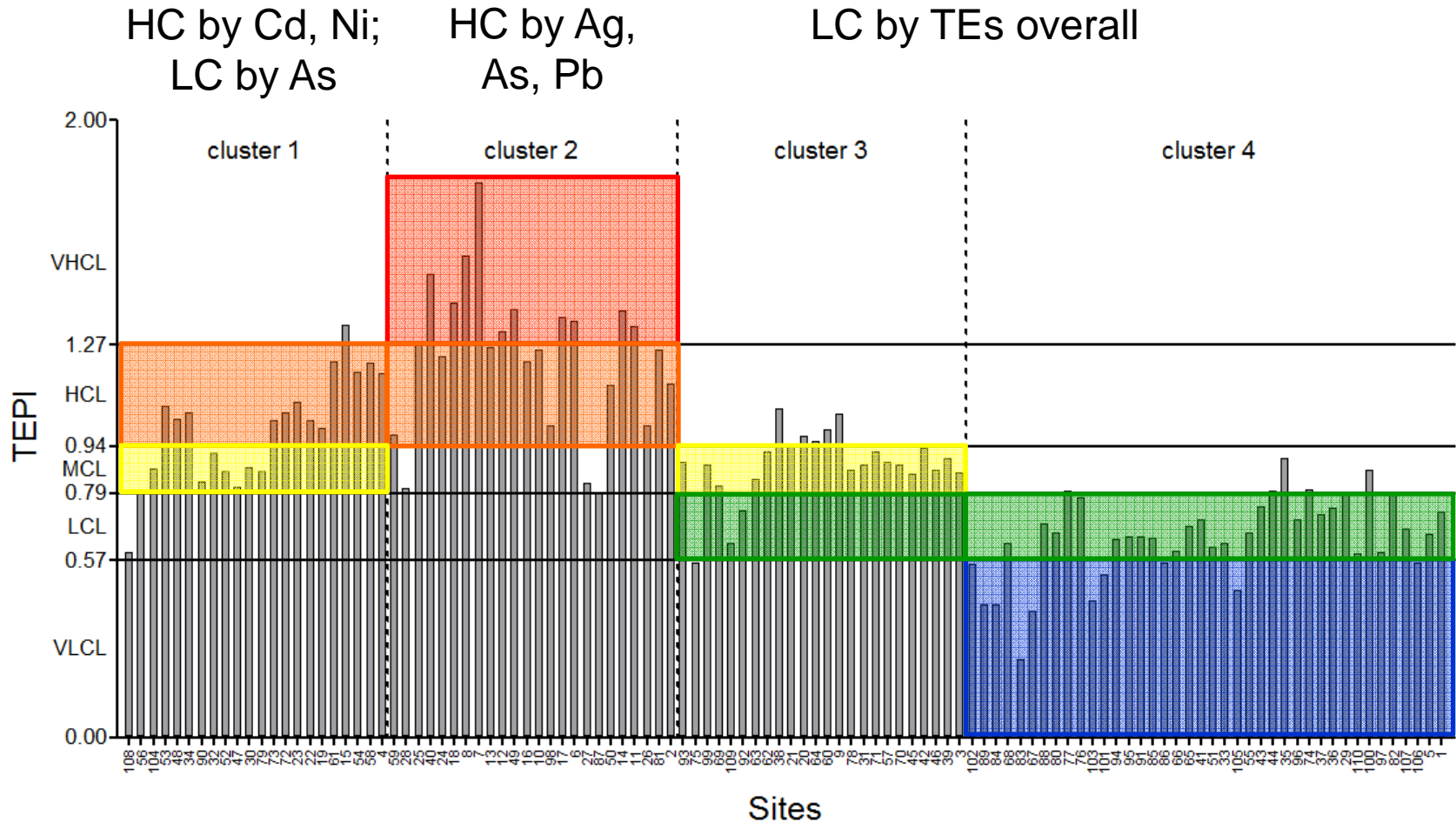
Dendrographic classification after cluster analysis of Ag, As, Cd, Cu, Hg, Ni and Pb concentrations measured in the blades of *Posidonia oceanica*, and TEPI values calculated from mean normalized TE concentrations.



Cluster analysis



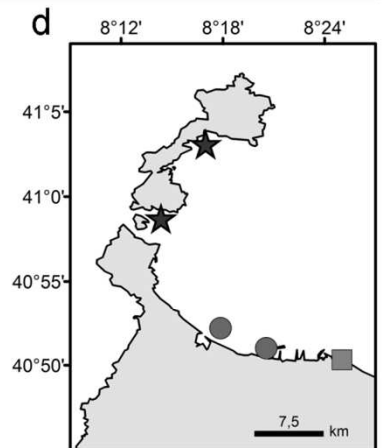
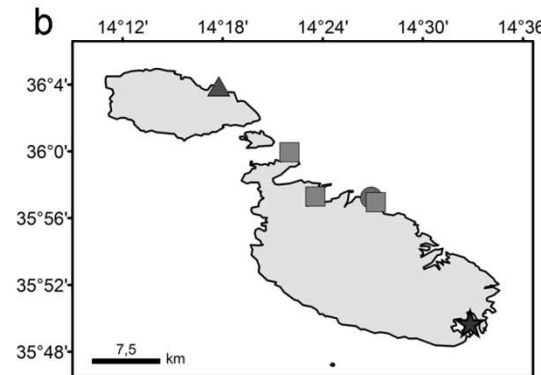
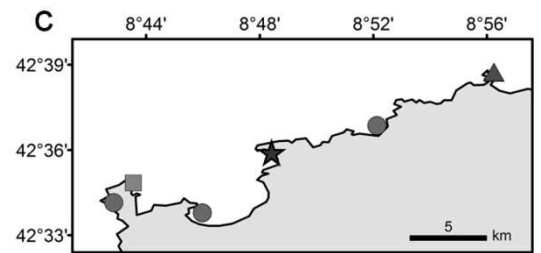
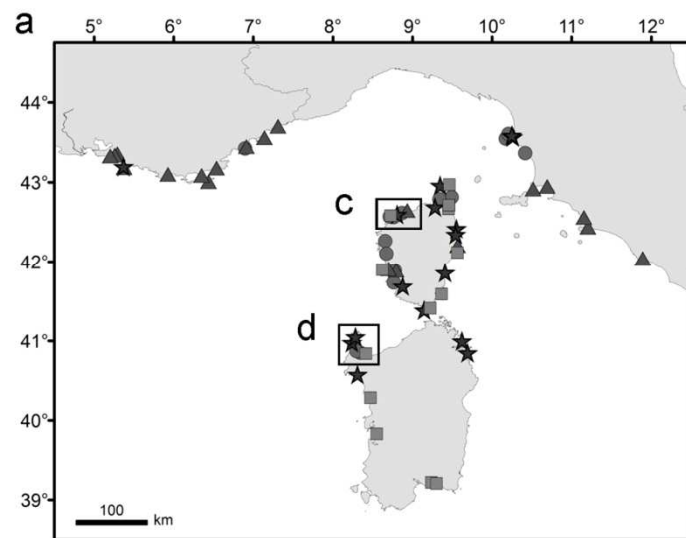
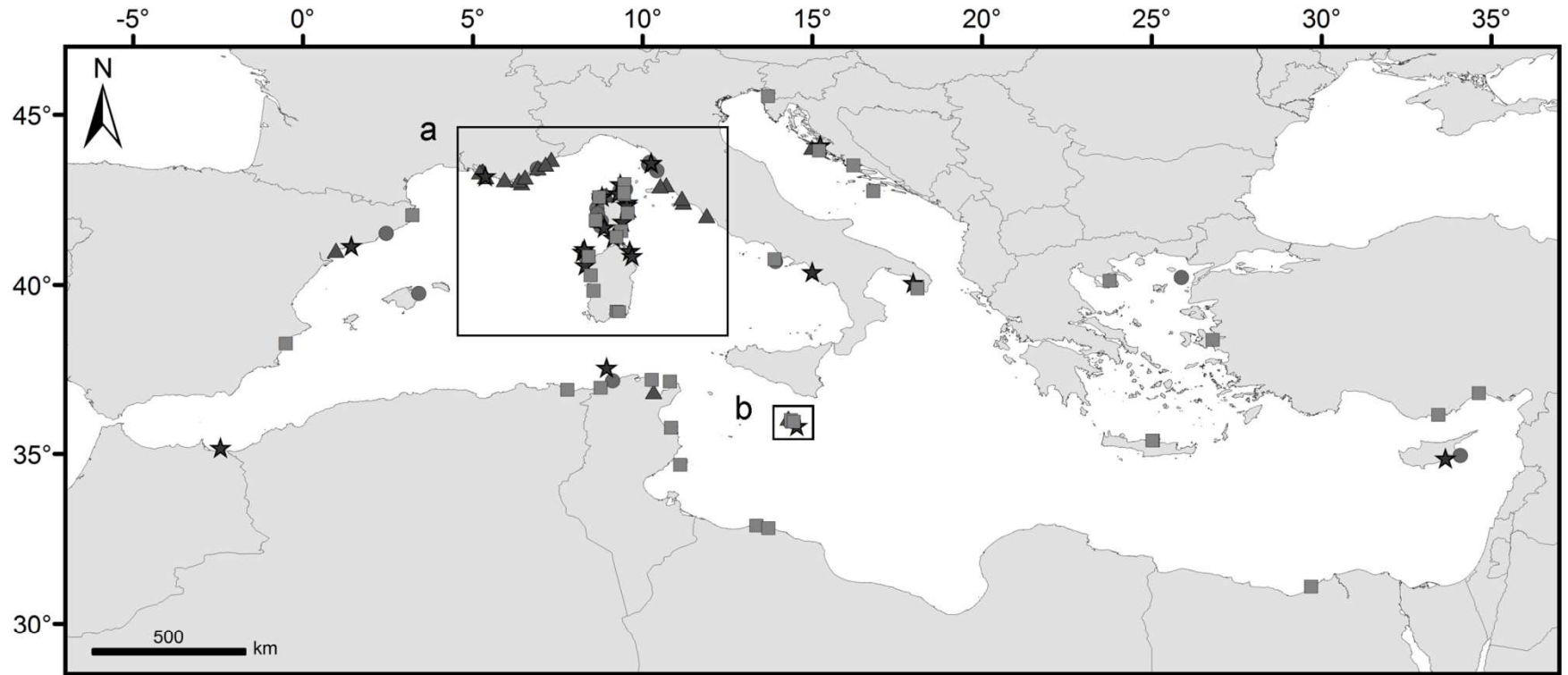
R
E
S
U
L
T
S
-
D
I
S
C
U
S
S
I
O
N



TEPI values calculated from mean normalized Ag, As, Cd, Cu, Hg, Ni and Pb concentrations measured in the blades of *P. oceanica* adult leaves. Sampling sites are sorted on the graph according to the dendrographic classification after cluster analysis of trace element concentrations and TEPI values.



RESULTS - DISCUSSION

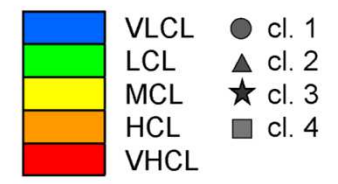
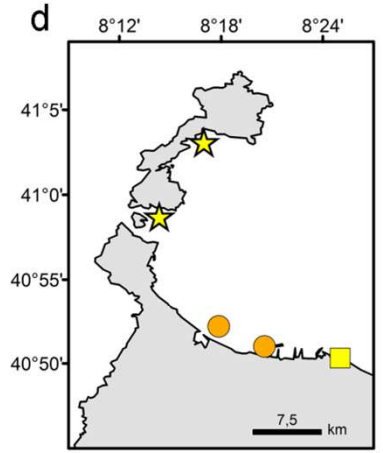
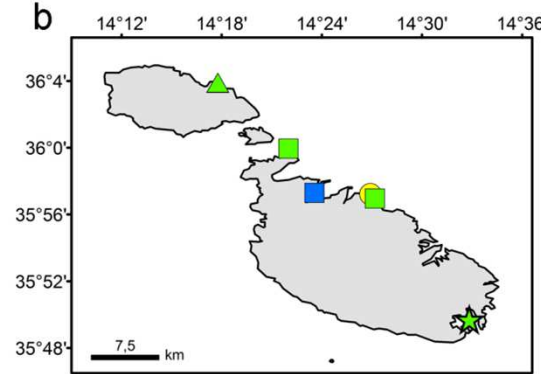
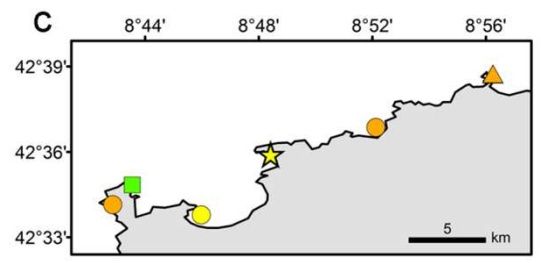
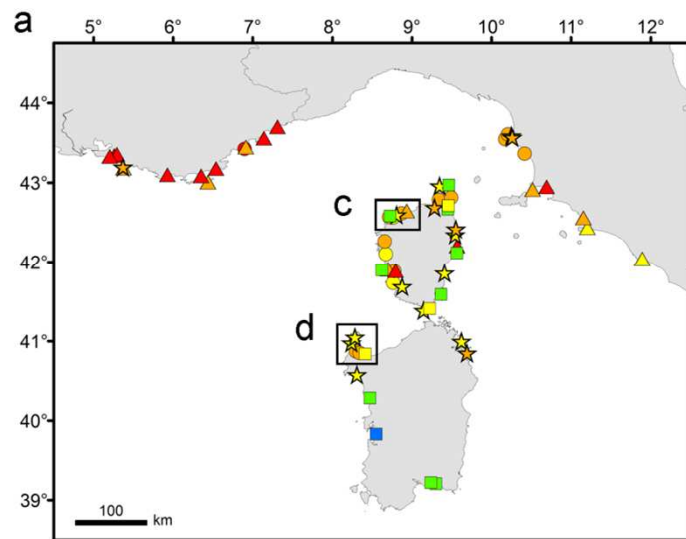
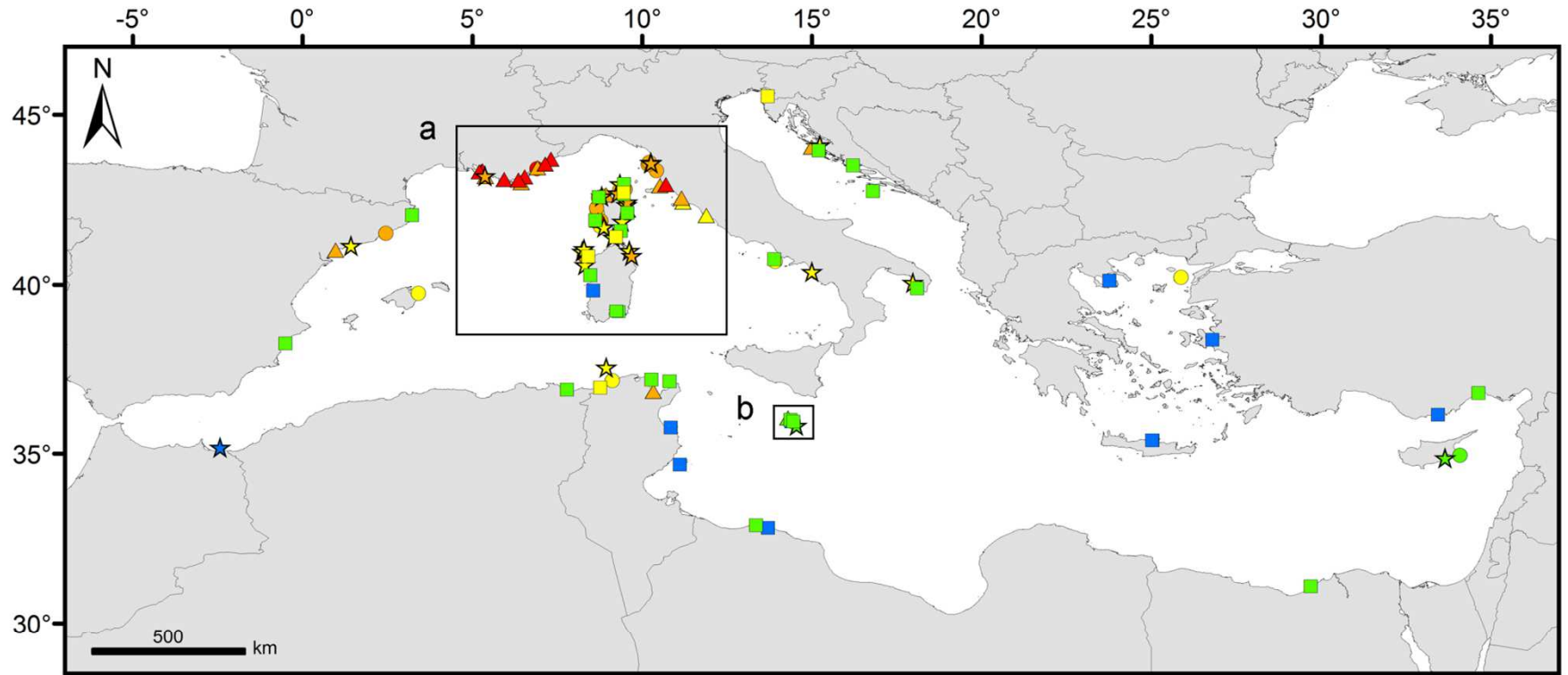


- cl. 1
- ▲ cl. 2
- ★ cl. 3
- cl. 4

Clustering



RESULTS - DISCUSSION



TEPI vs. clustering



Conclusion



Sustainable coastal management requires the development of appropriate **contamination classification systems**.

➔ Combined utilization of several **complementary monitoring tools**:

- ❖ water quality scale;
- ❖ pollution index (TEPI and TESVI);
- ❖ spatial analysis (PCA, CA, correlation analysis and GIS mapping).

In the Mediterranean:

- ❖ To assess TE contamination threats;
- ❖ To depict contamination gradients;
- ❖ To monitor TE contamination at regional or local scales.

Conclusion: to privilege such **holistic approaches** to accurately monitor the TE contamination rate of coastal waters and to transfer **relevant information** on this **composite problem** to environmental managers and policy makers.



Acknowledgements



A
C
K
N
O
W
L
E
D
G
E
M
E
N
T
S

This study was supported by the collaboration of several laboratories from all around the Mediterranean:

- Pr Gérard Pergent, Pr Céline Lafabrie, Dr Christine Pergent-Martini, Dr Maylis Salivas-Decaux and Dr Cecilia Lopez y Royo, University of Corte (Corsica, France);
- Dr Saïd Belbacha and Dr Rachid Semroud (Algeria);
- University of Zagreb, Dr Tatjana Bakran-Petricioli (Croatia);
- Melina Marcou and Myroula Hadjichristoforou (Cyprus);
- Dr Stéphane Sartoretto, Ifremer Center of Toulon,
- Berangère Casalta (France);
- Dr Georges Skoufas and Dr Eugenia Apostolaki, Institute of Oceanography, Hellenic Centre for Marine Research (Greece);
- Dr Cristina Buia and Dr Pier Panzalis (Italy);
- Dr Joseph Borg (Malta);
- Robert Turk, Borut Mavric and Lovrenc Lipej (Slovenia);
- Boris Weitzmann, Dr Yolanda Fernandez Torquemada, F. Javier Zapata Salgado, Elvira Alvarez Pérez, Dr Javier Romero, Izaskun Llagostera (Spain);
- Dr Habib Langar (Tunisia); Dr Baris Akçalı and Billür Celebi (Turkey).

We also thank Steven Barillec, Nicolas Luy and Renzo Biondo for their help.



More info ...



Journal of Environmental Management 151 (2015) 486–499



ELSEVIER

Contents lists available at ScienceDirect

Journal of Environmental Management

journal homepage: www.elsevier.com/locate/jenvman



Bioassessment of trace element contamination of Mediterranean coastal waters using the seagrass *Posidonia oceanica*



J. Richir ^{a, b, *}, M. Salivas-Decaux ^c, C. Lafabrie ^{c, d}, C. Lopez y Royo ^c, S. Gobert ^a,
G. Pergent ^c, C. Pergent-Martini ^c

^a Laboratory of Oceanology, MARE Centre, University of LIEGE, B6C, 4000 LIEGE, Sart Tilman, Belgium

^b Institute of Marine Sciences, University of Portsmouth, Ferry Road, Portsmouth PO4 9LY, United Kingdom

^c FRES 3041, EqEL, University of Corsica, Faculty of Sciences, BP 52, 20250 Corte, France

^d UMR 241 EIO, University of French Polynesia, BP 6570, 98 702 Faa'a, Tahiti, French Polynesia

