

Merci de votre attention



De l'application des mathématiques en biologie : acquis et perspectives

Pr Yves Brostaux (Dr Ir)
Axe Modélisation et Développement



Gembloux Agro-Bio Tech
Université de Liège

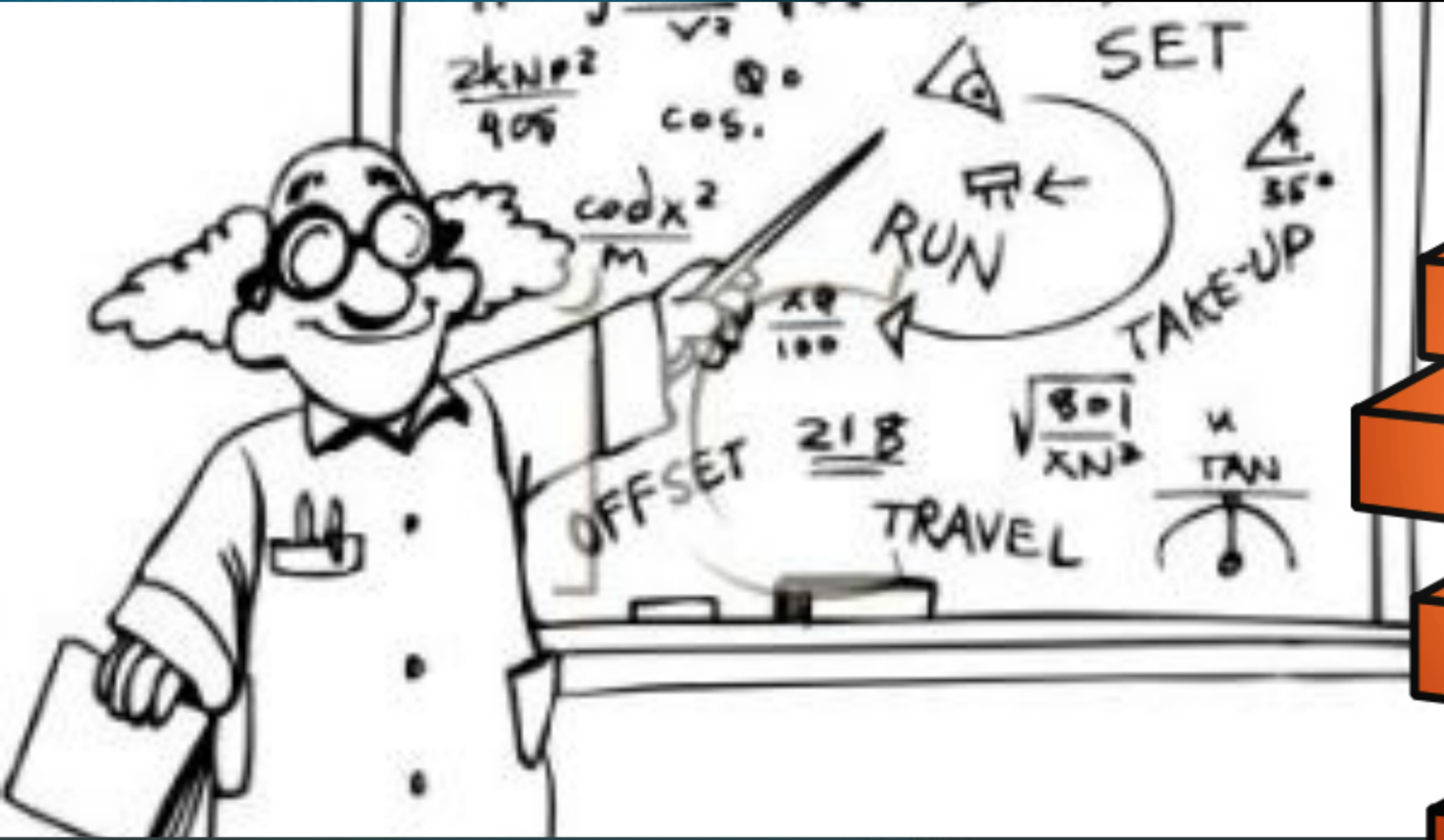


Prezi

Génétique des
populations

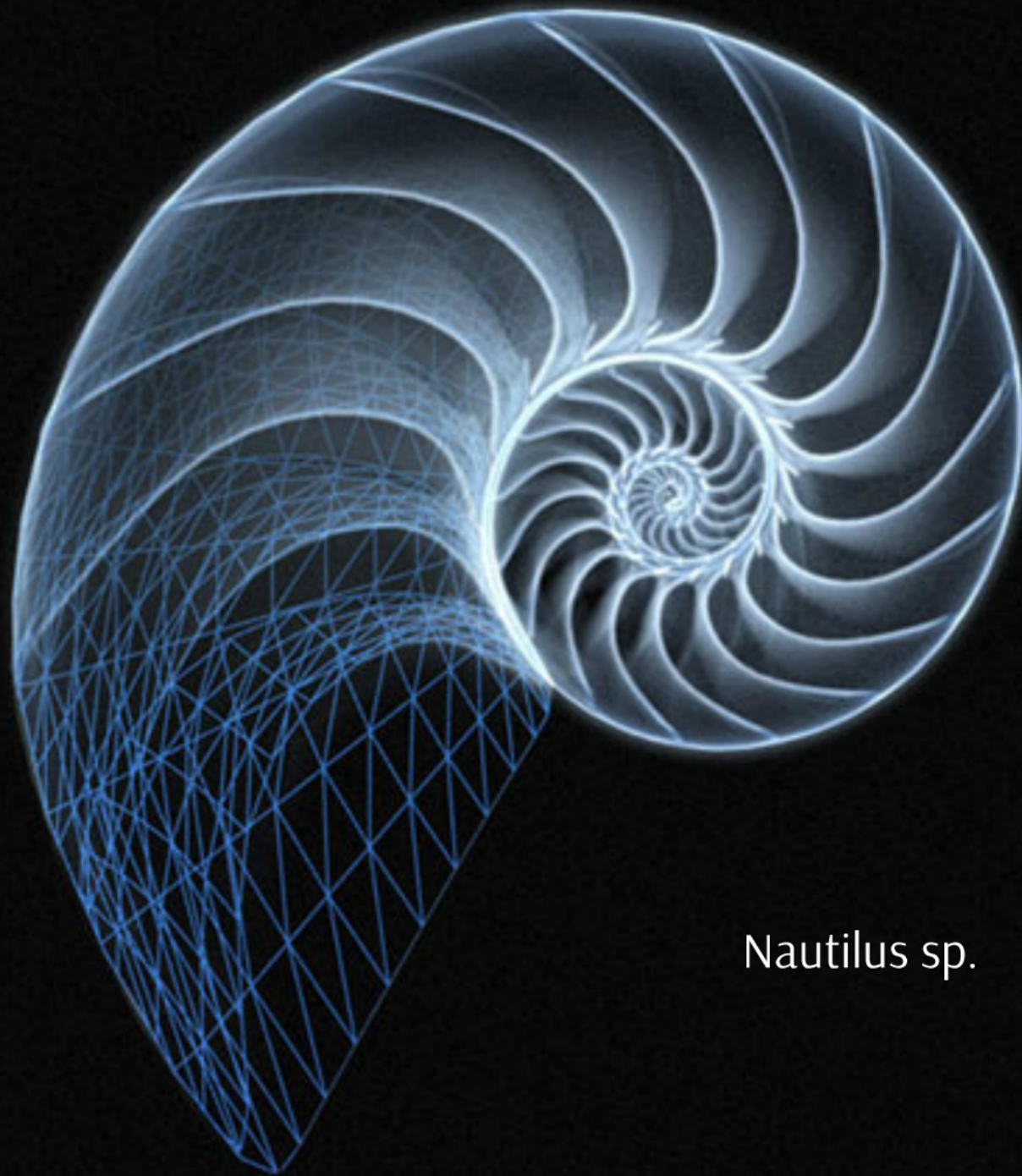


Math vs Biologie

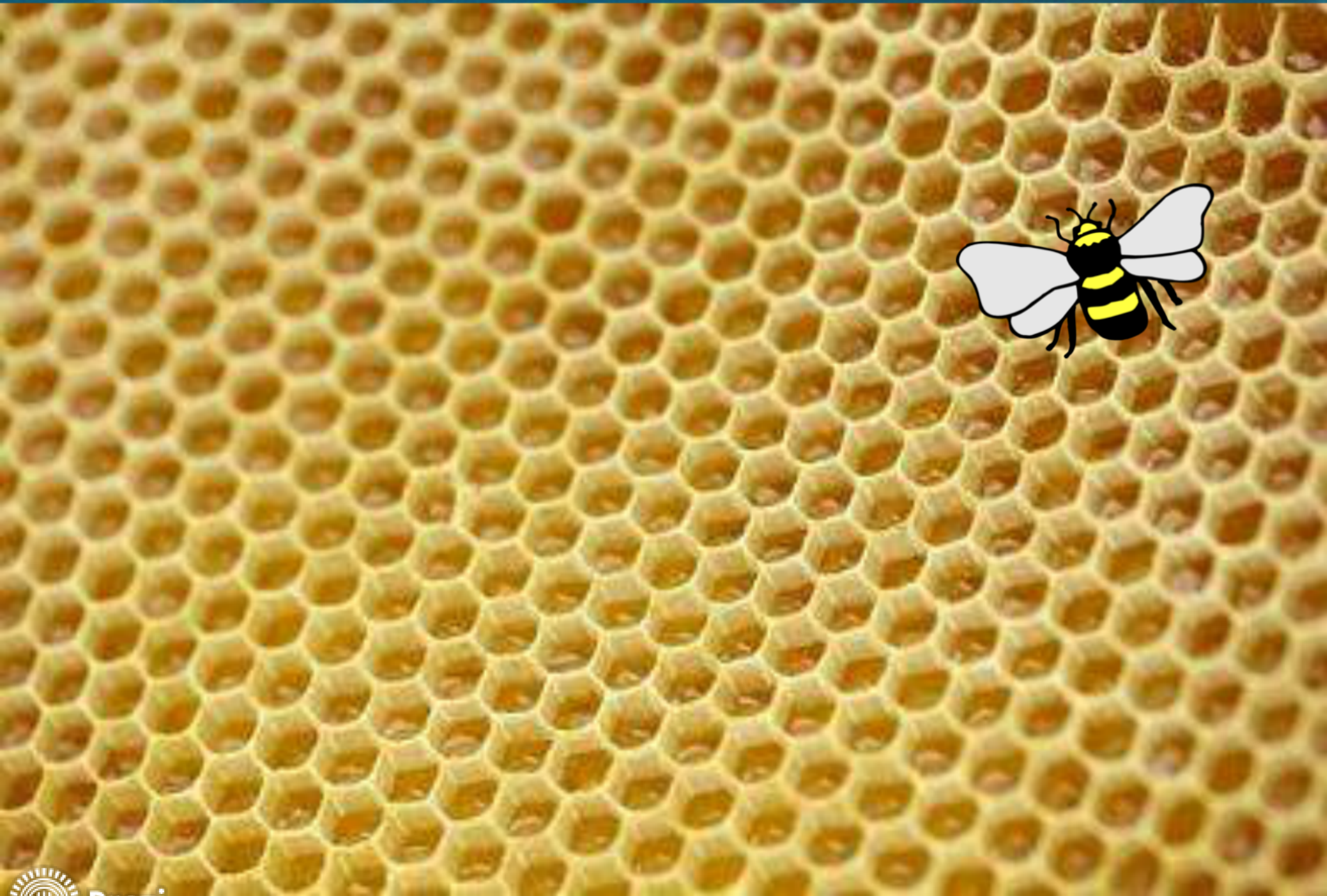


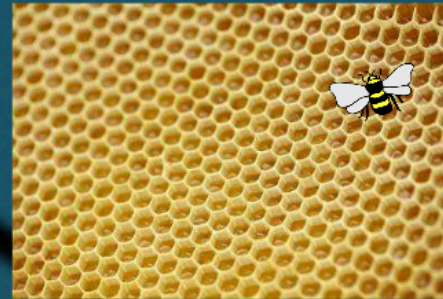
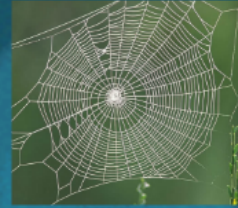
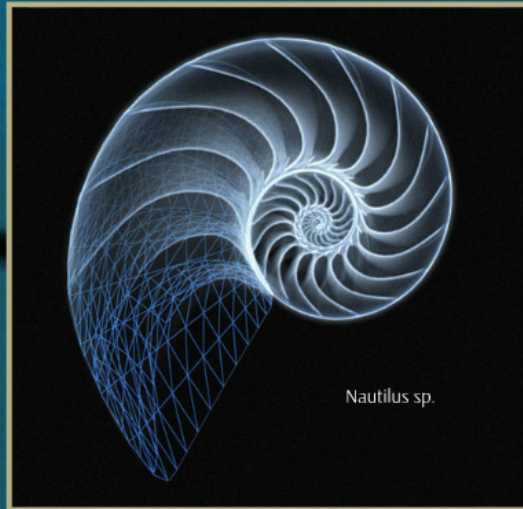


Nature et mathématiques



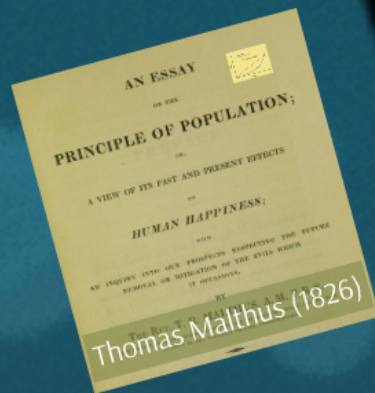
Nautilus sp.



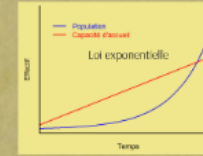


*Un outil de description
du monde vivant*

Dynamique des populations



AN ESSAY



ON THE

PRINCIPLE OF POPULATION;

OR,

A VIEW OF ITS PAST AND PRESENT EFFECTS

ON

HUMAN HAPPINESS;

WITH

AN INQUIRY INTO OUR PROSPECTS RESPECTING THE FUTURE
REMOVAL OR MITIGATION OF THE EVILS WHICH
IT OCCASIONS.

BY

THE REV. T. R. MALTHUS, A.M. F.R.S.

A FELLOW OF TRINITY COLLEGE, CAMBRIDGE, AND PROFESSOR OF HISTORY AND POLITICAL
ECONOMY IN THE EAST-INDIA COLLEGE, HERTFORDSHIRE.

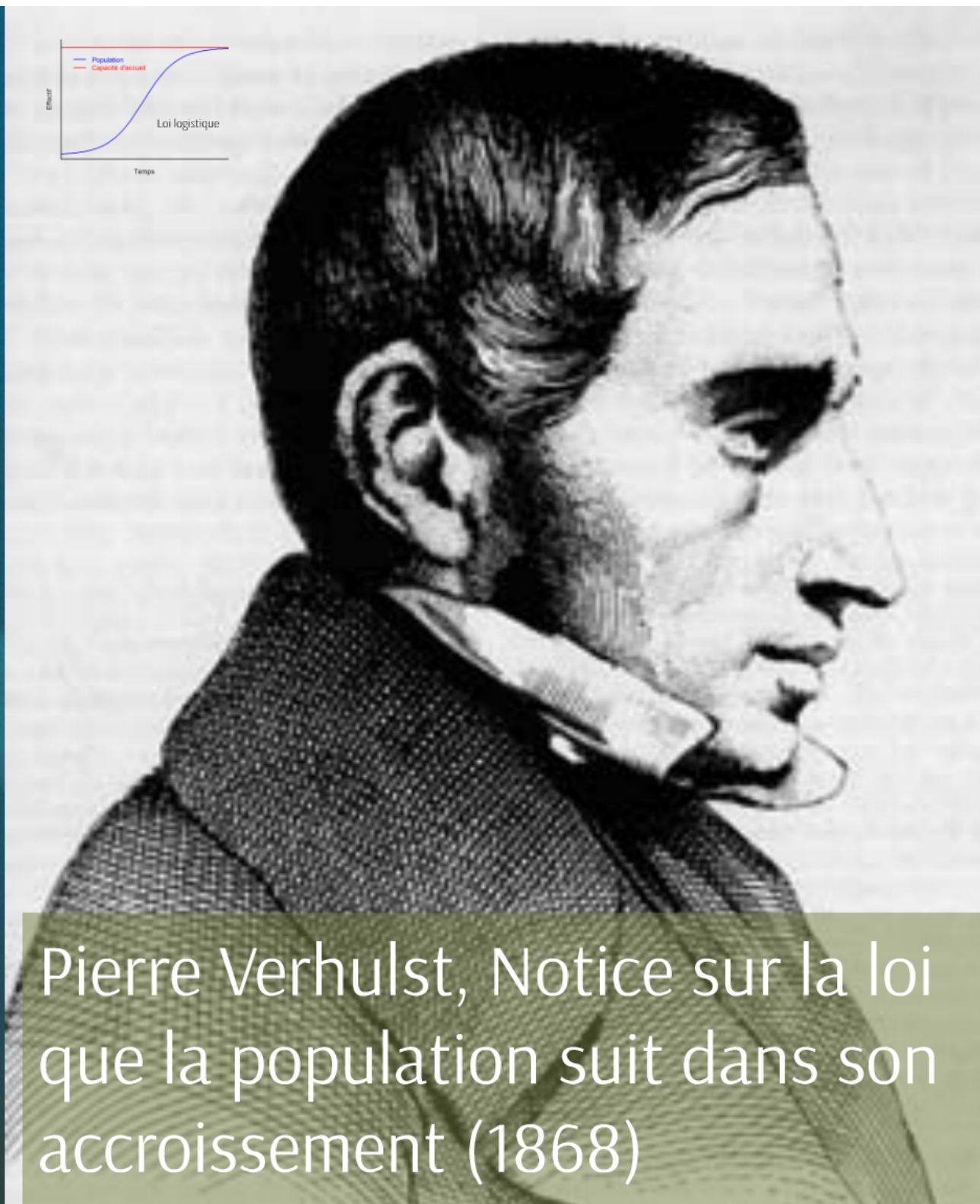
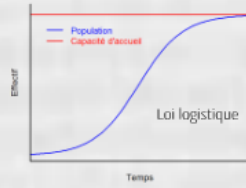
Thomas Malthus (1826)

Effectif

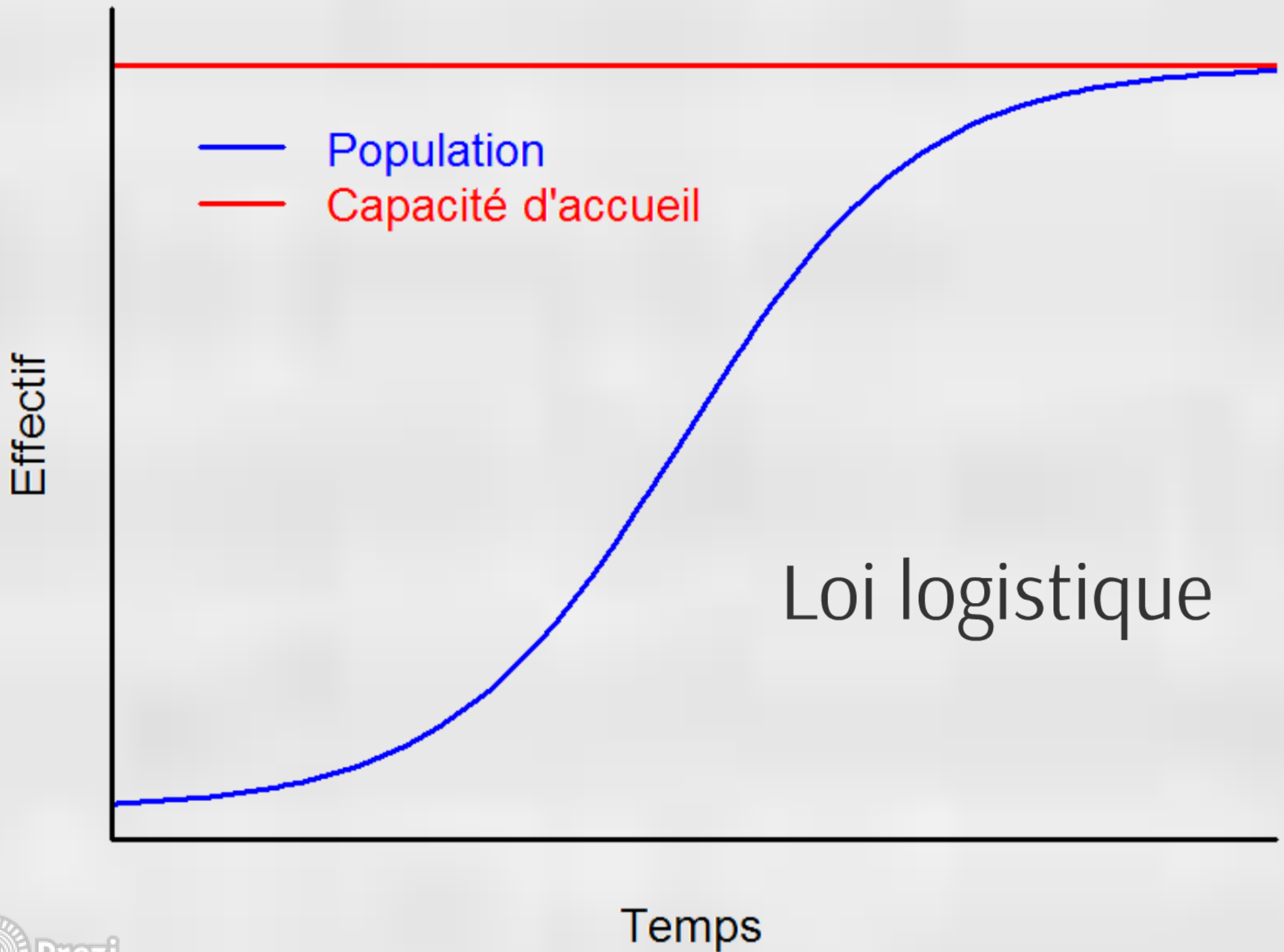
- Population
- Capacité d'accueil

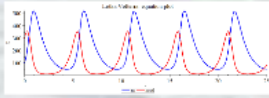
Loi exponentielle

Temps



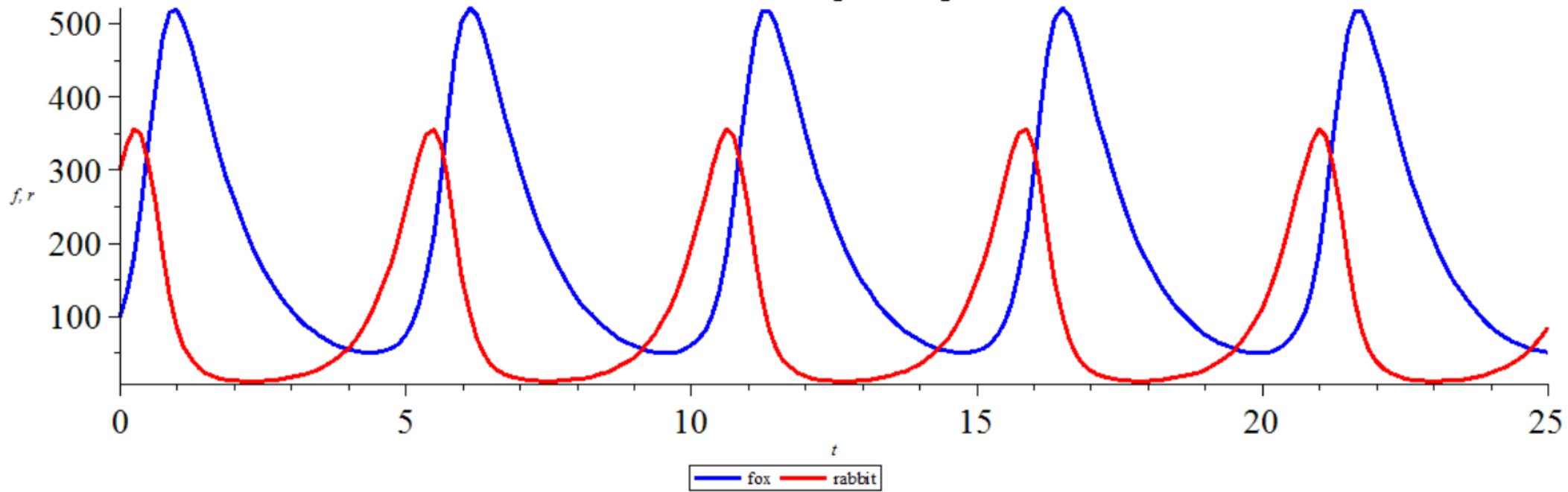
Pierre Verhulst, Notice sur la loi que la population suit dans son accroissement (1868)



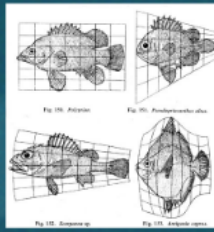


Lotka-Volterra (1925)

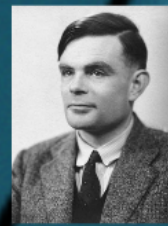
Lotka Volterra equation plot



Morphogénèse



D'Arcy Wentworth - On Growth and Form (1917)



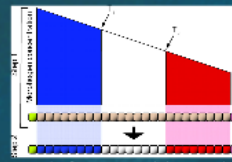
Alan Turing



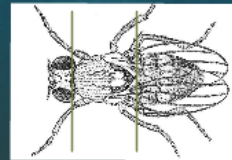
The Chemical Basis of Morphogenesis (1952)

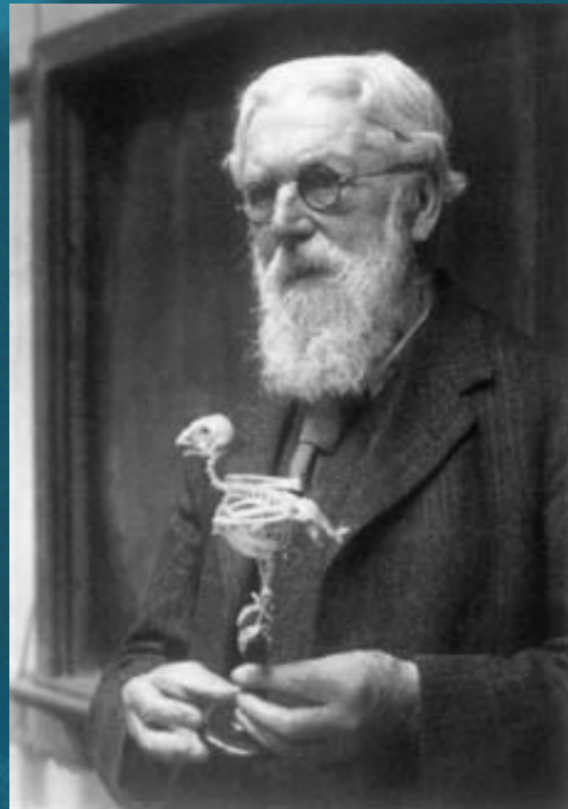
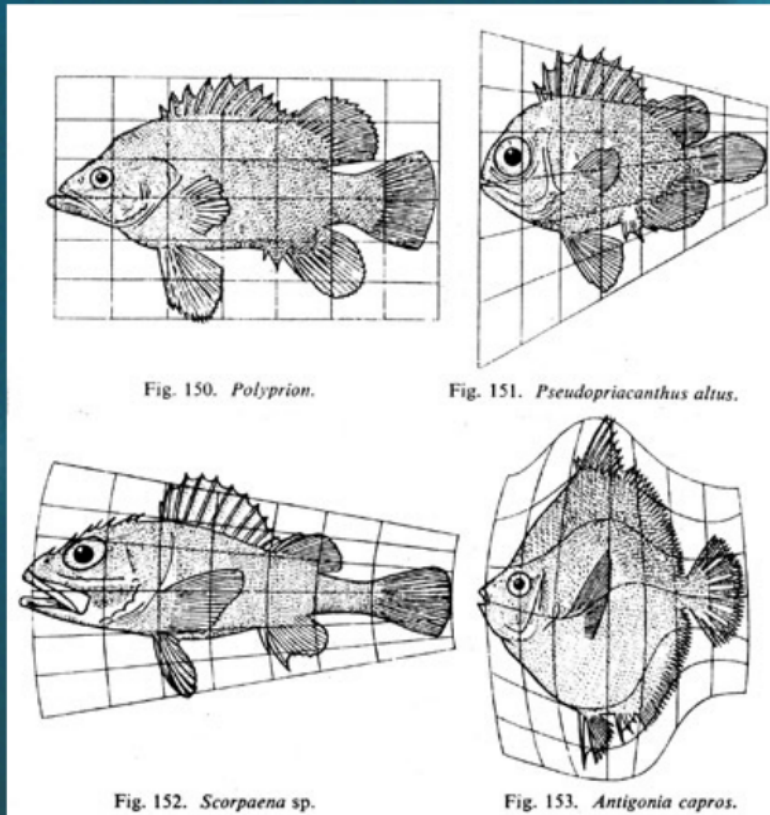


Lewis Wolpert

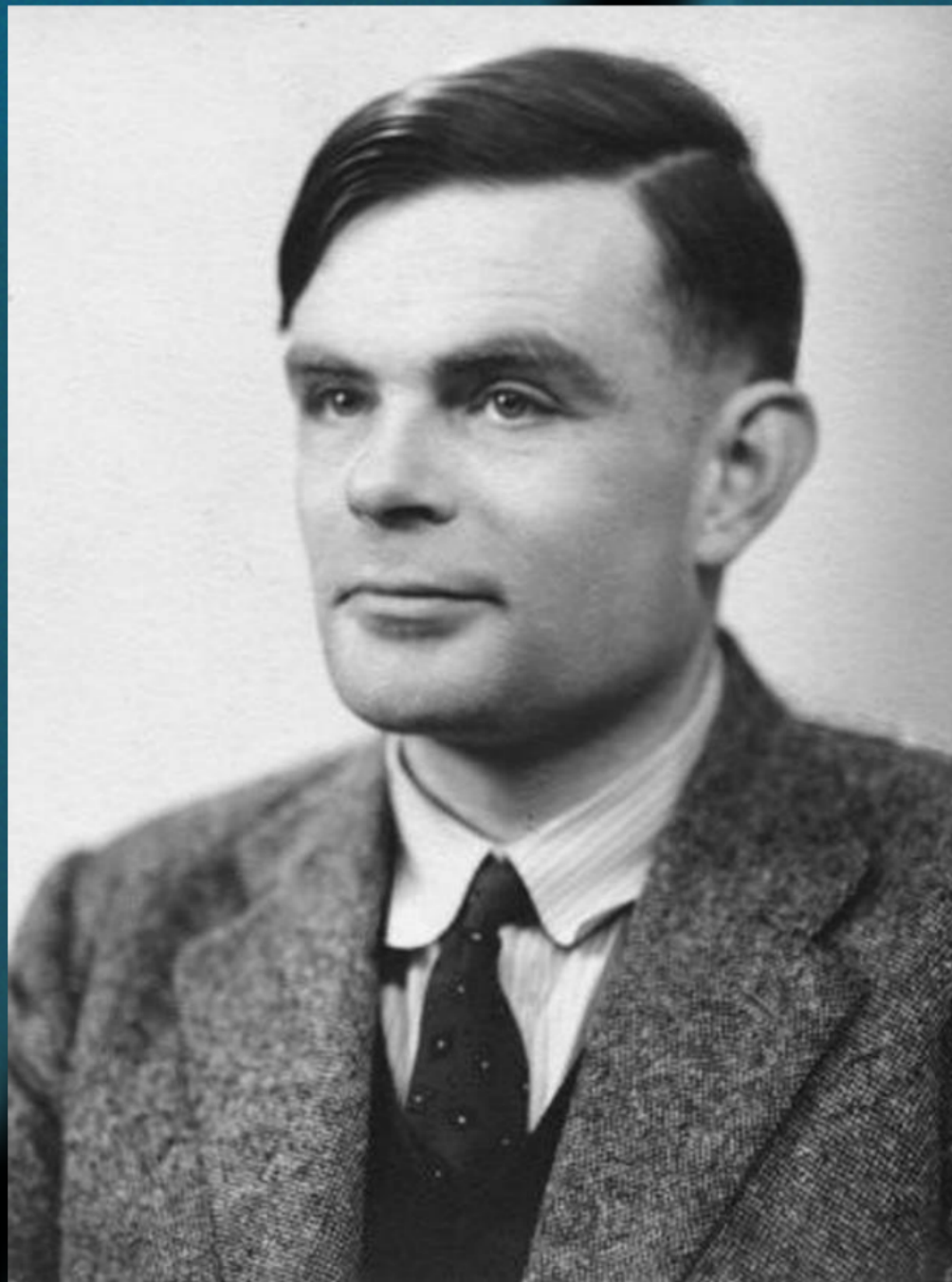


Positional information and the spatial pattern of cellular differentiation, 1969



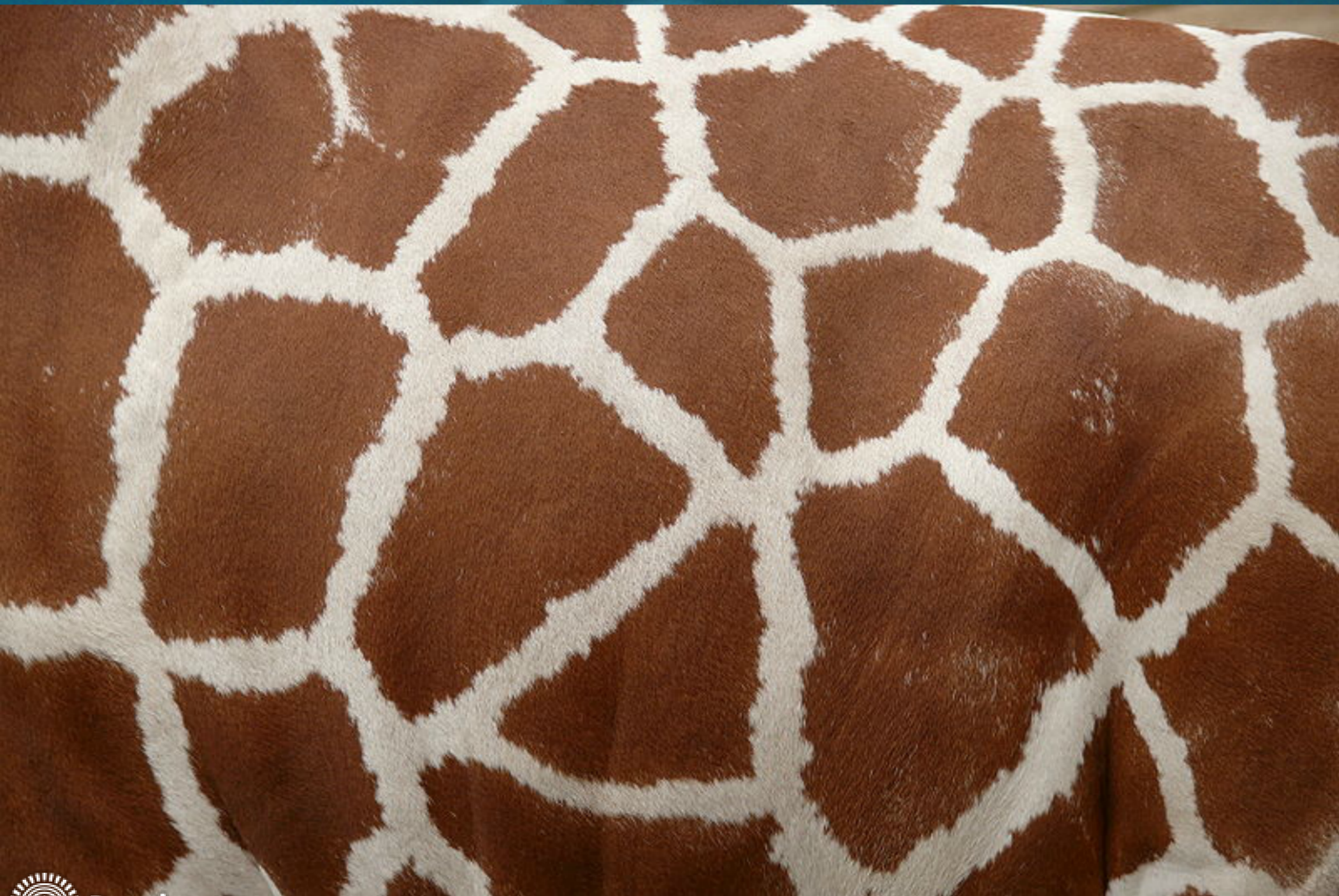


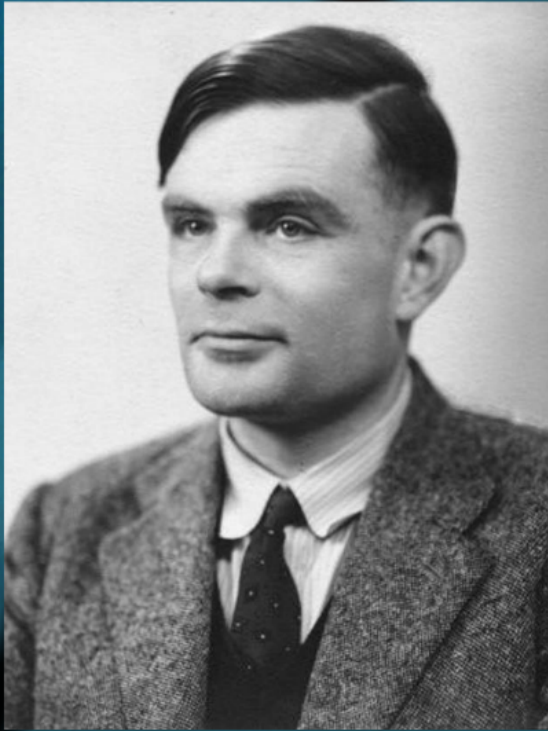
D'Arcy Wentworth - On Growth and Form (1917)



Alan Turing







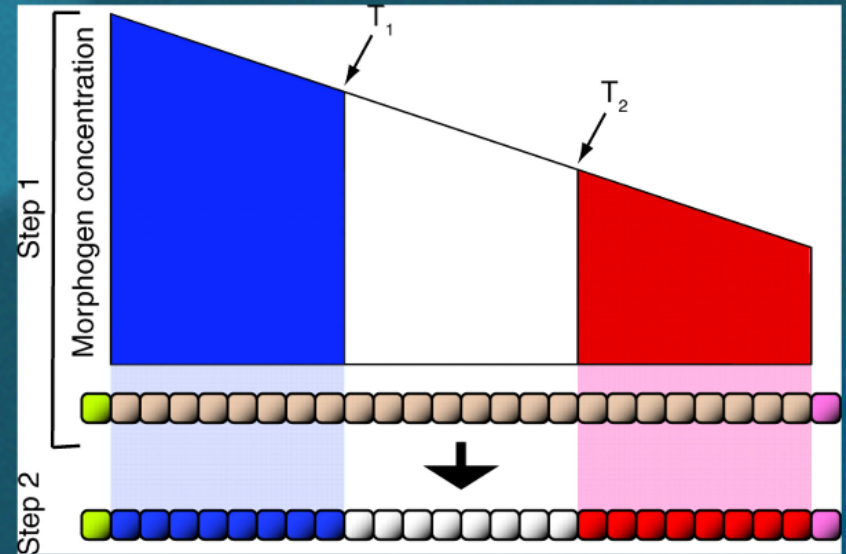
Alan Turing



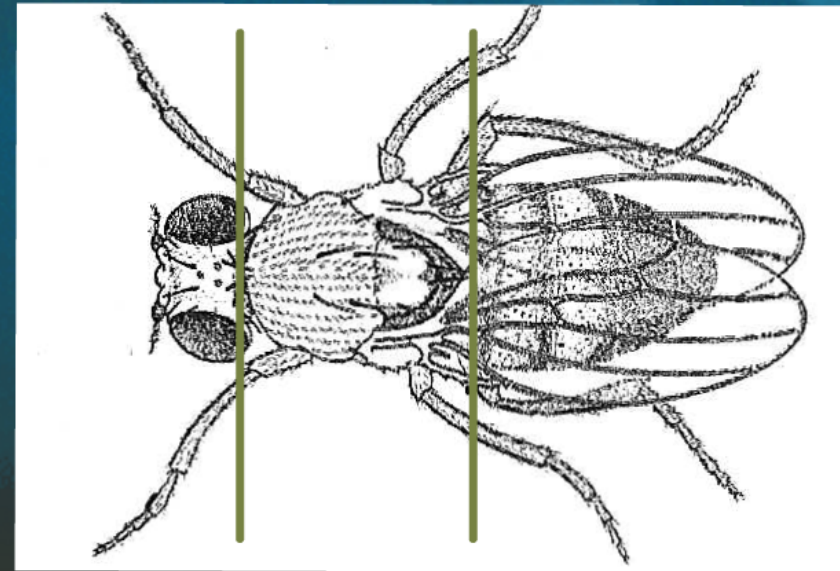
The Chemical Basis of
Morphogenesis (1952)



Lewis Wolpert



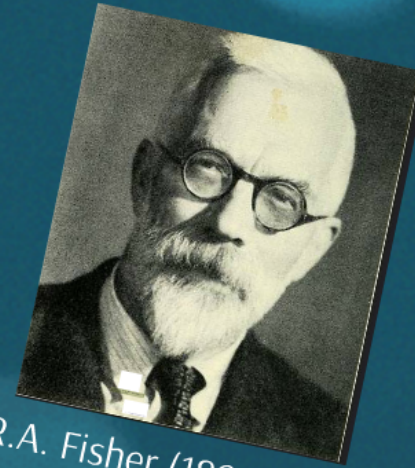
Positional information and the spatial pattern of cellular differentiation, 1969



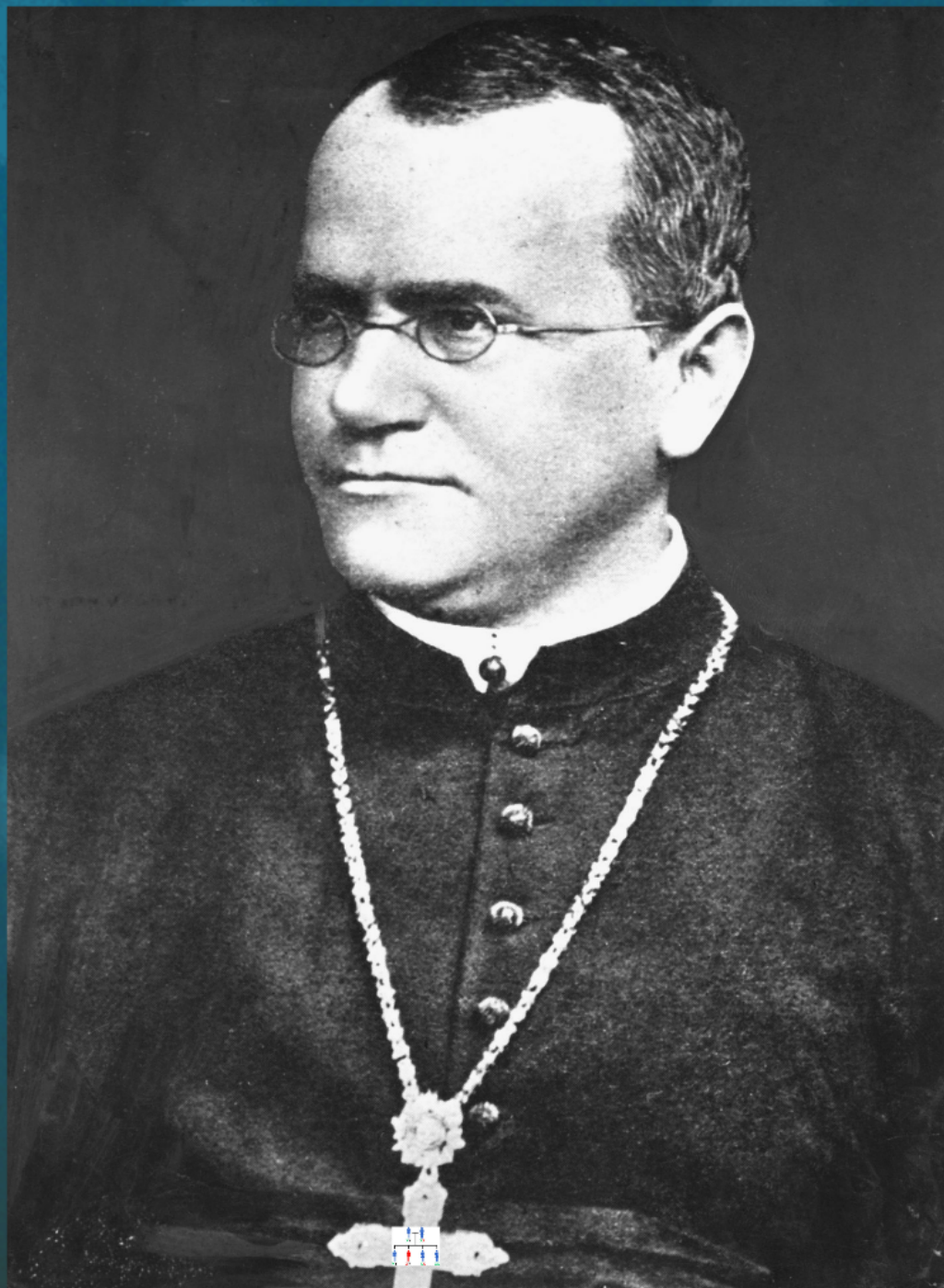
Génétique des populations



G. Mendel (1822-1884)



R.A. Fisher (1890-1962)

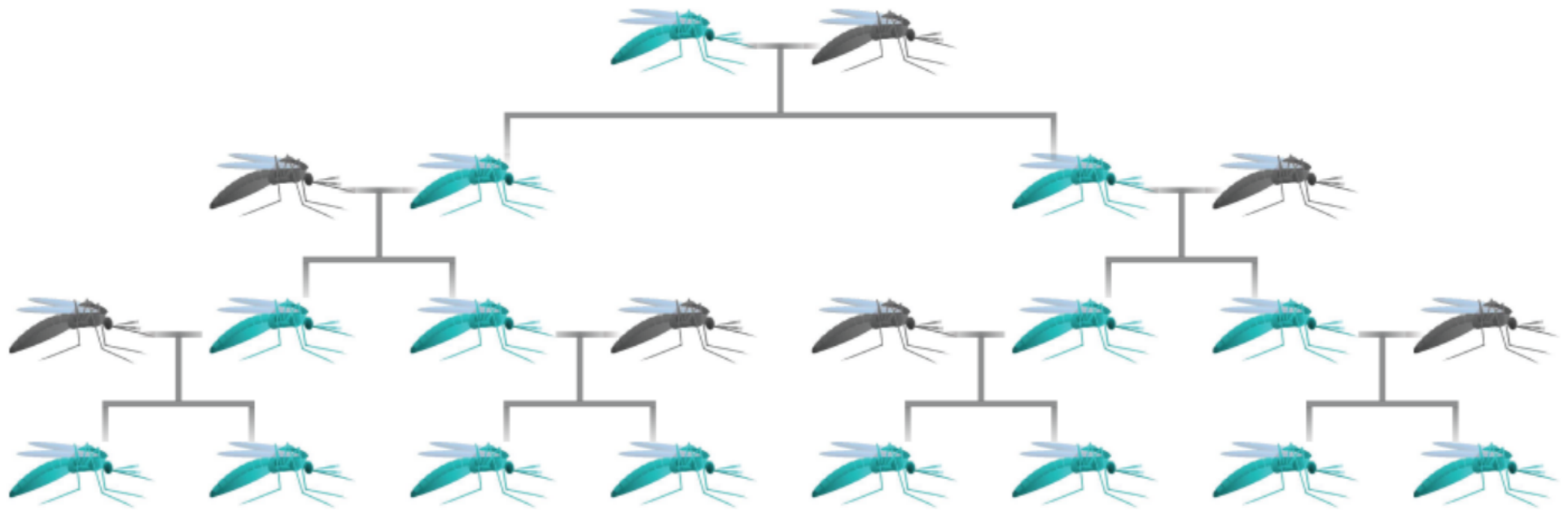


G. Mendel (1822-1884)

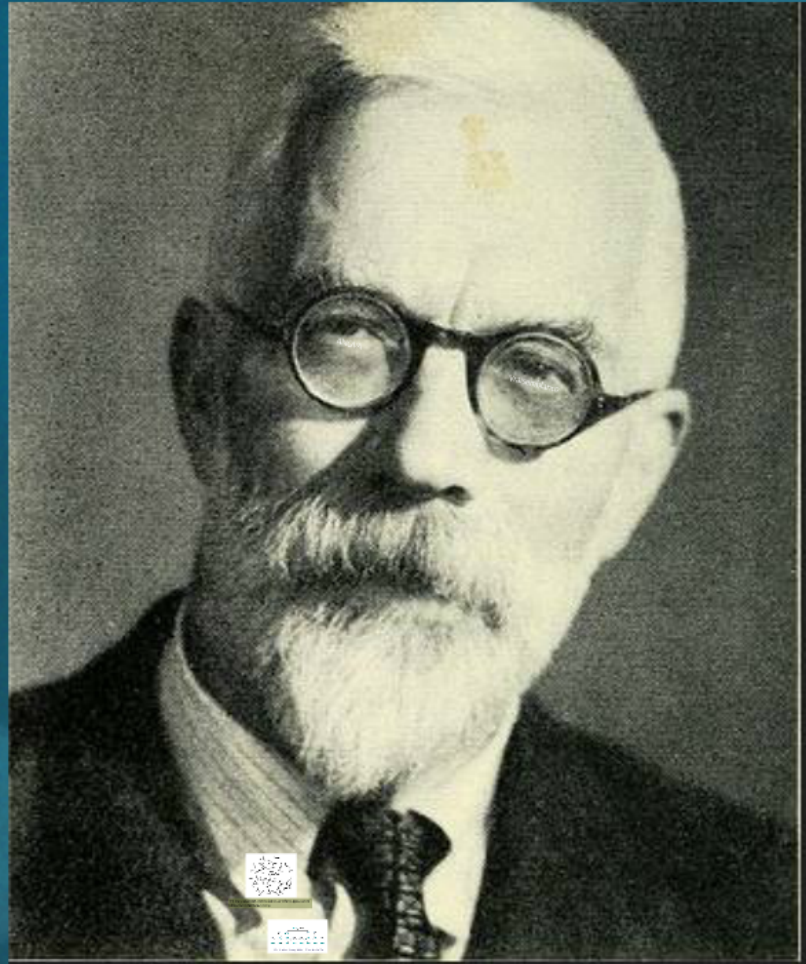




The Correlation Between Relatives on the Supposition of Mendelian Inheritance (1915)



The Genetical Theory of Natural Selection (1930)



R.A. Fisher (1890-1962)

ANOVA

Vraisemblance

La maitrise du hasard

Statistique

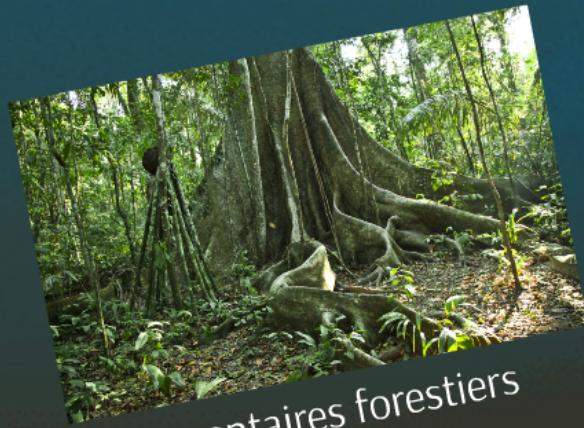
Inférence
Plan d'échantillonnage
Binomiale
Analyse en composantes principales
Régression
Variance
Analyse discriminante
Courbe de Gauss
Erreur-standard

Analyse de la variance
Maximum de vraisemblance
Estimation
Moindres carrés
Moyenne
Séries chronologiques
Arbre de décision
Test d'hypothèse
Experimental design

Agronomie



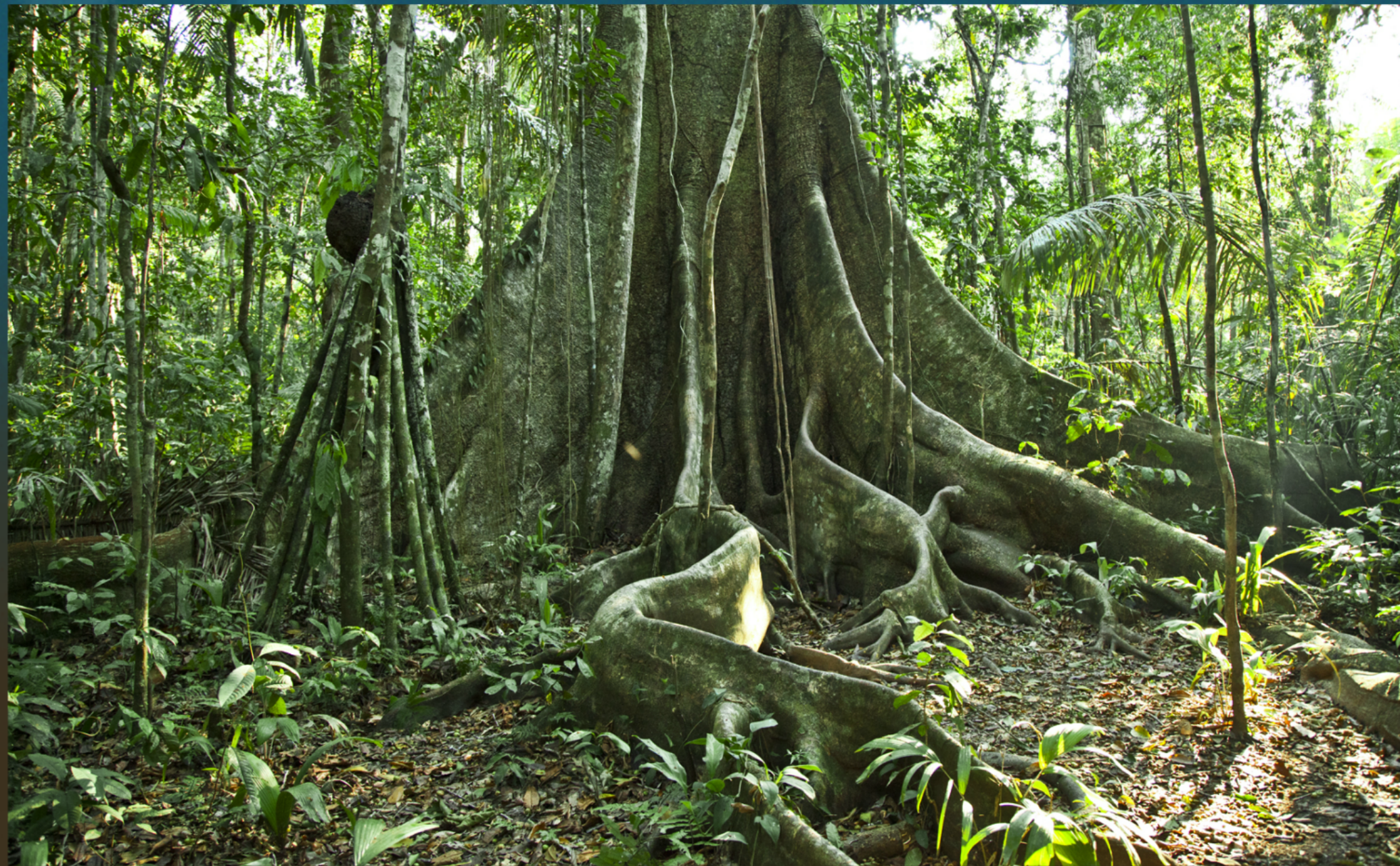
Ecologie



Inventaires forestiers



Recensements de faune





Recensements de faune

Santé & médecine



Etudes cliniques



Neurologie



Epidémiologie



Etudes cliniques



Today's Random Medical News

from the New England
Journal of
Panic-Inducing
Gothicbook

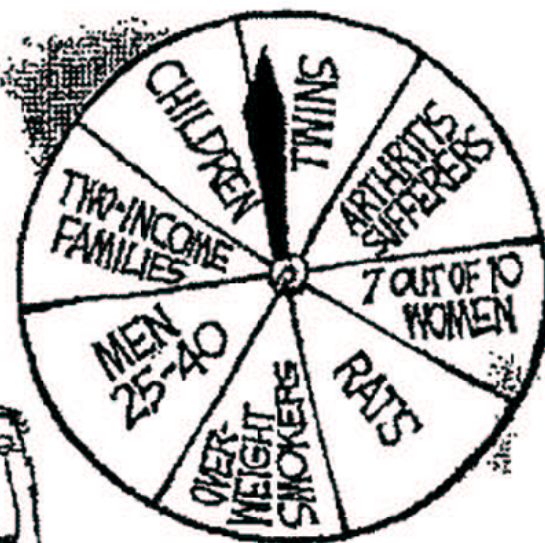
JAMES BISHOP



CAN CAUSE



IN



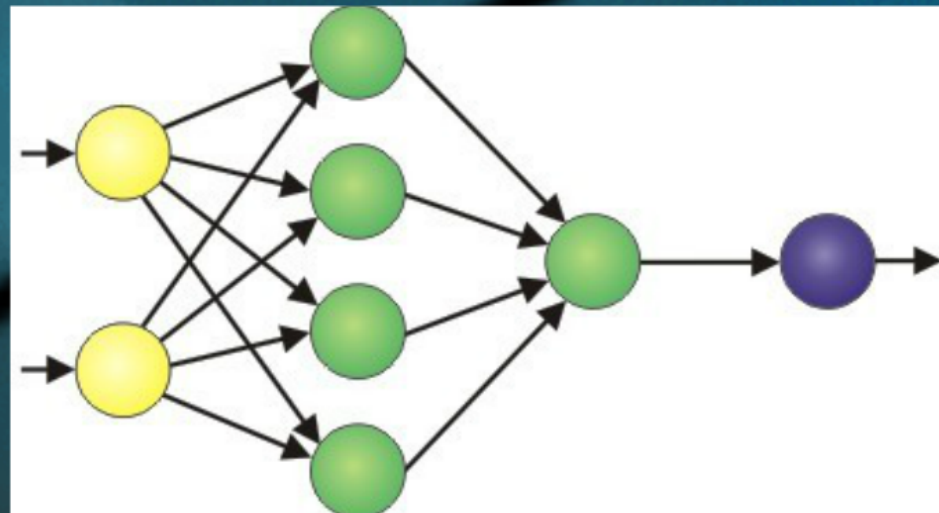
ACCORDING TO A
REPORT RELEASED
TODAY....

NEWS



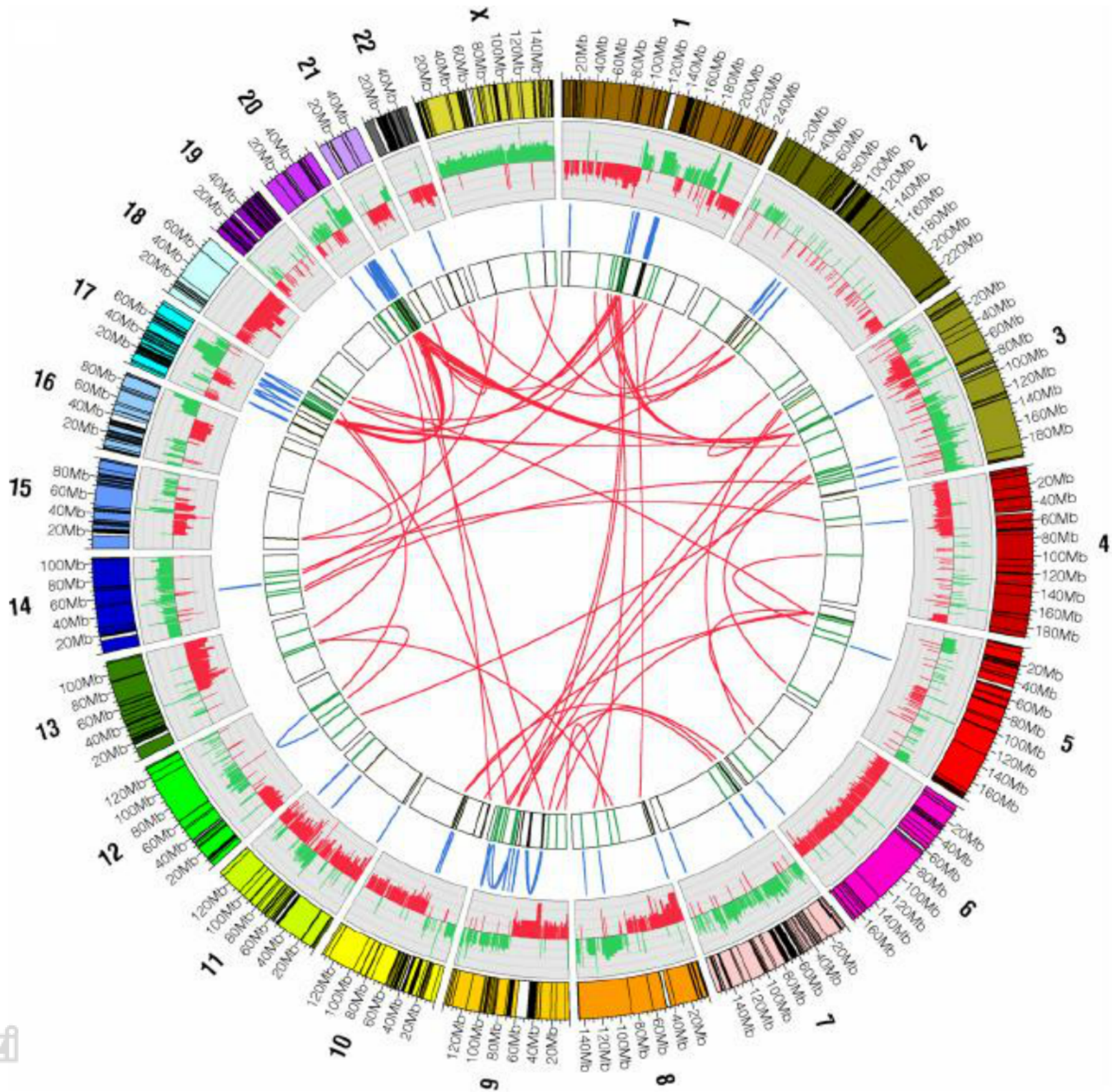
Neurologie

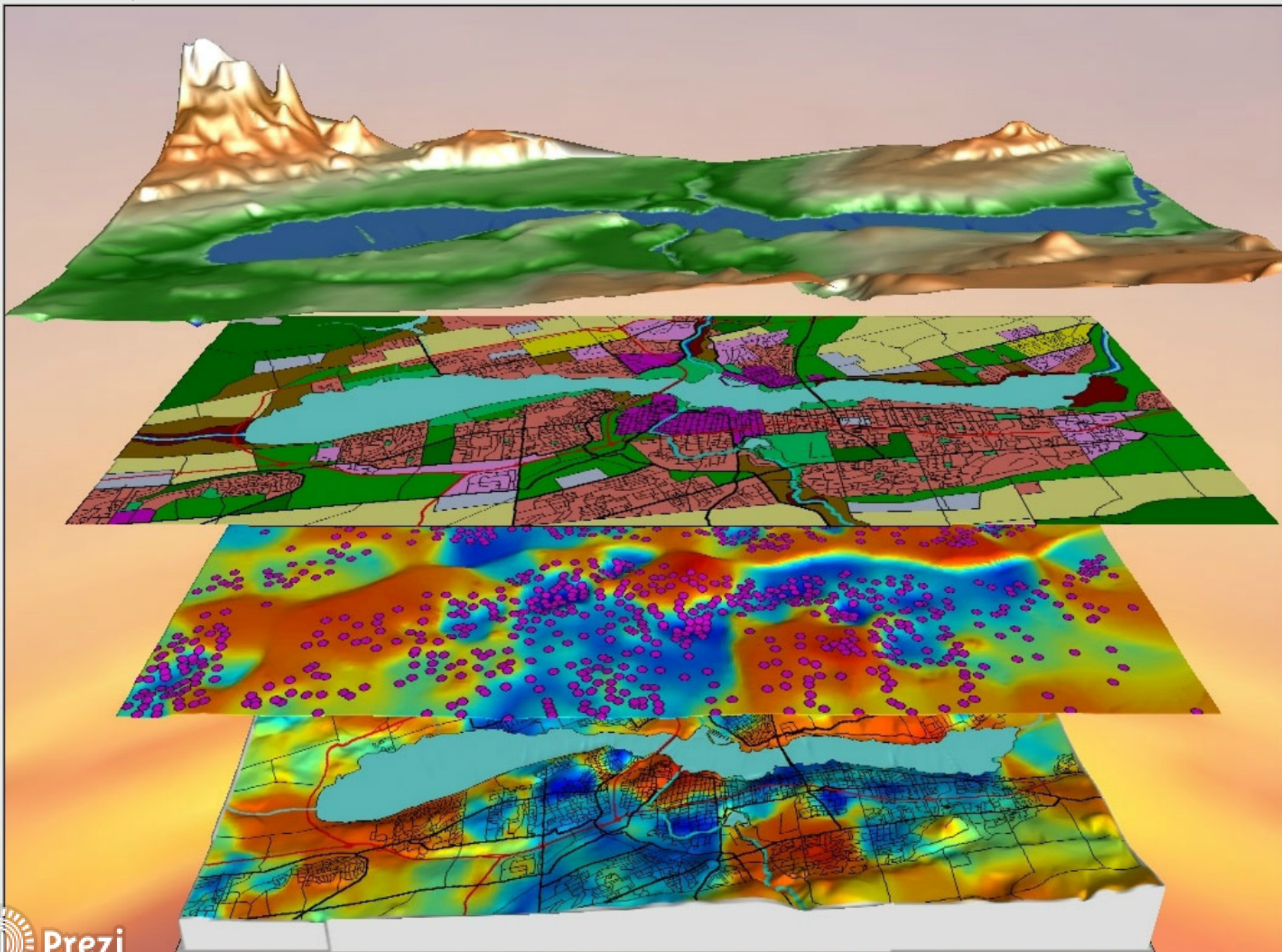
Apprentissage par



Réseaux neuronaux

Nouveaux défis





La  du futur ?

Formation



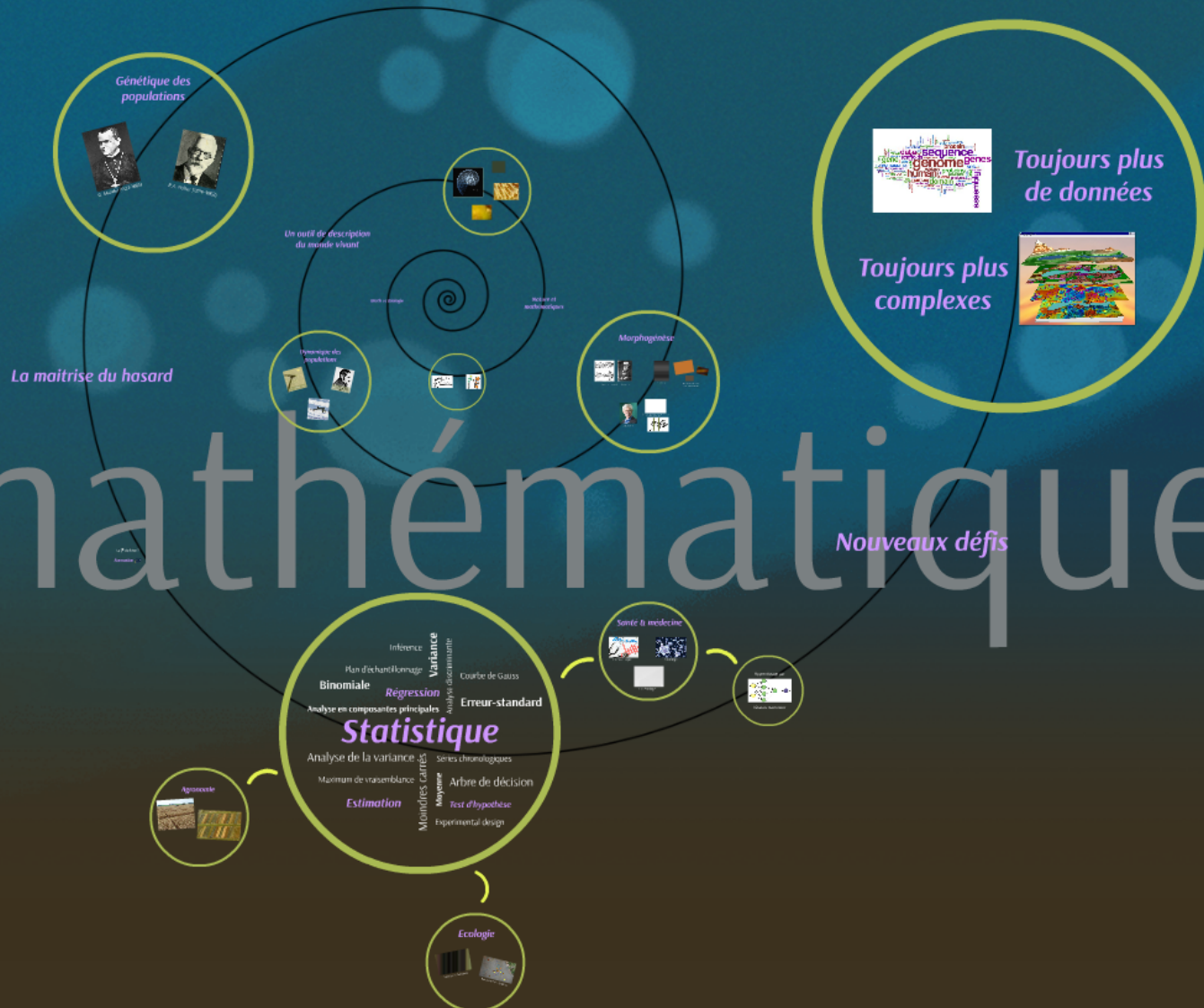
De l'application des mathématiques en biologie : acquis et perspectives



Pr Yves Brostaux (Dr Ir)
Axe Modélisation et Développement



Gembloux Agro-Bio Tech
Université de Liège



Biomathématiques

Merci de votre attention

