

Regional crop & irrigation monitoring:
some examples of (new) opportunities

Belgian workshop 'Space4Food'

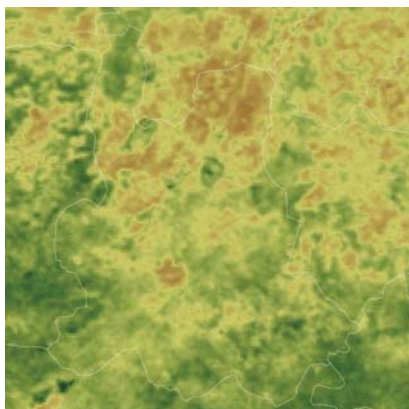
June 11, 2015 - Milan

Joost WELLENS & Water-Environment-Development unit

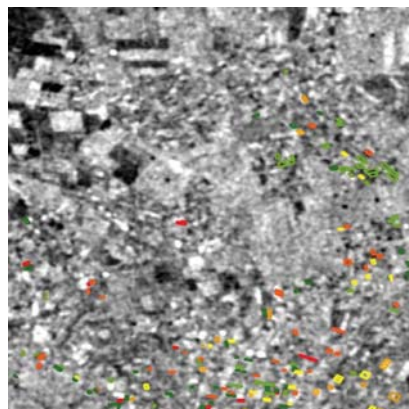


... Monitoring 'space4food'

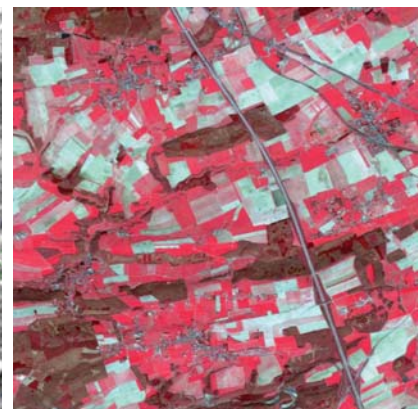
- applications at ≠ levels -



170 km



10 km



5 km

National / regional:

- MODIS (NDVI, GAI, ...);
- temporal profiles;
- historic data.



Statistical approach

Regional:

- ERS-2;
- irrigation management database.



Signal analysis

Field / Regional / National:

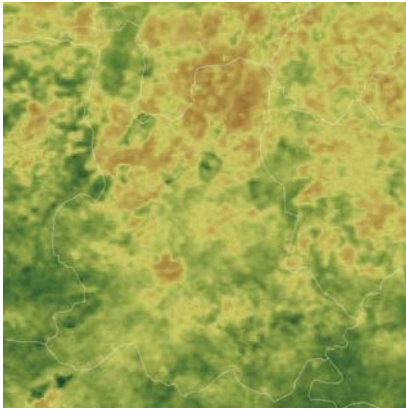
- SPOT-5 Take5;
- time series.
- field observations.



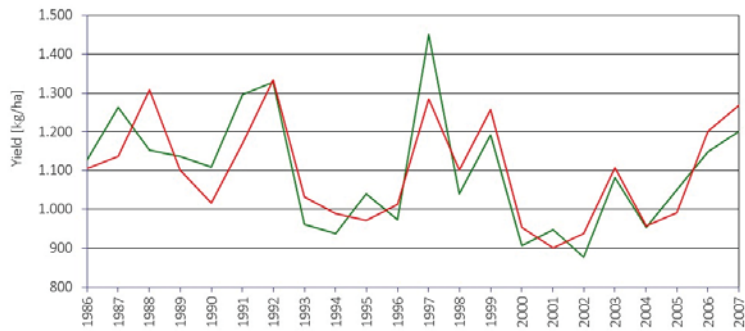
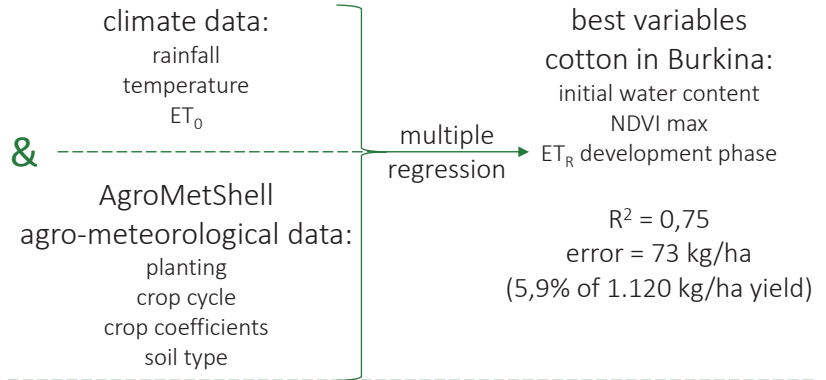
Assimilation

1.i Regional (coarse) crop monitoring

- Global Monitoring for Food Security -

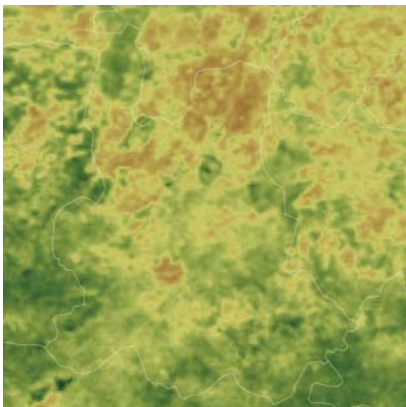


- MODIS;
- NDVI temporal profiles.

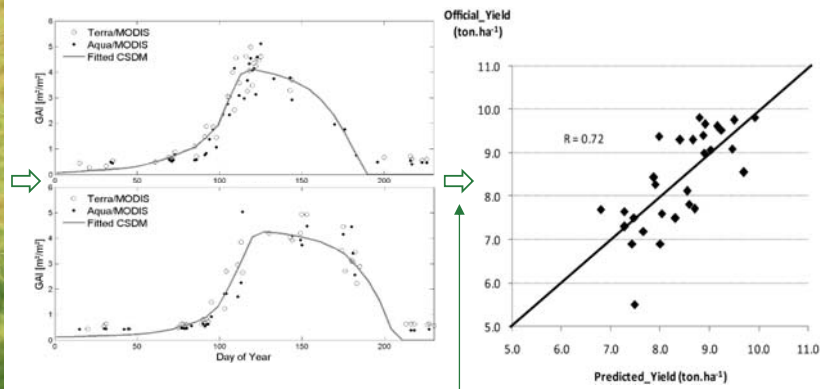


1.ii Regional (coarse) crop monitoring

- 'curve fitting' -



- MODIS;
- GAI temporal profiles.
(green area index)

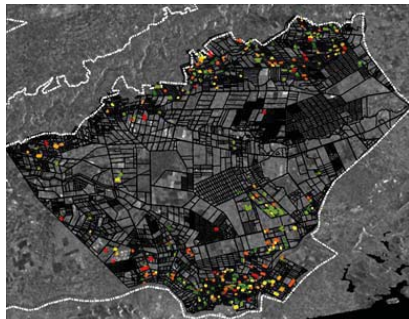


Shape of decreasing curves
of green area index

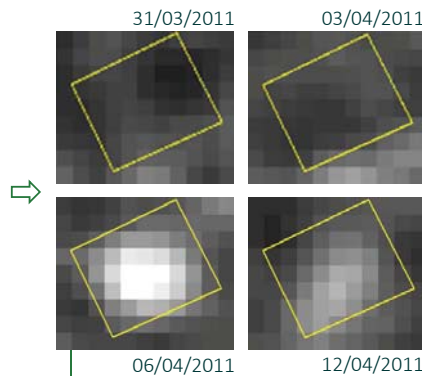
~
Regional wheat yield

2 Irrigation monitoring

- using SAR data -



- irrigated perimeter of Tadla (center of Morocco);
- 100,000 ha of wheat;
- flood irrigation, 2 to 5 times;
- irrigation water invoices database.



- ERS-2;
- C-band;
- dual polarizations (VV);
- 25 m.

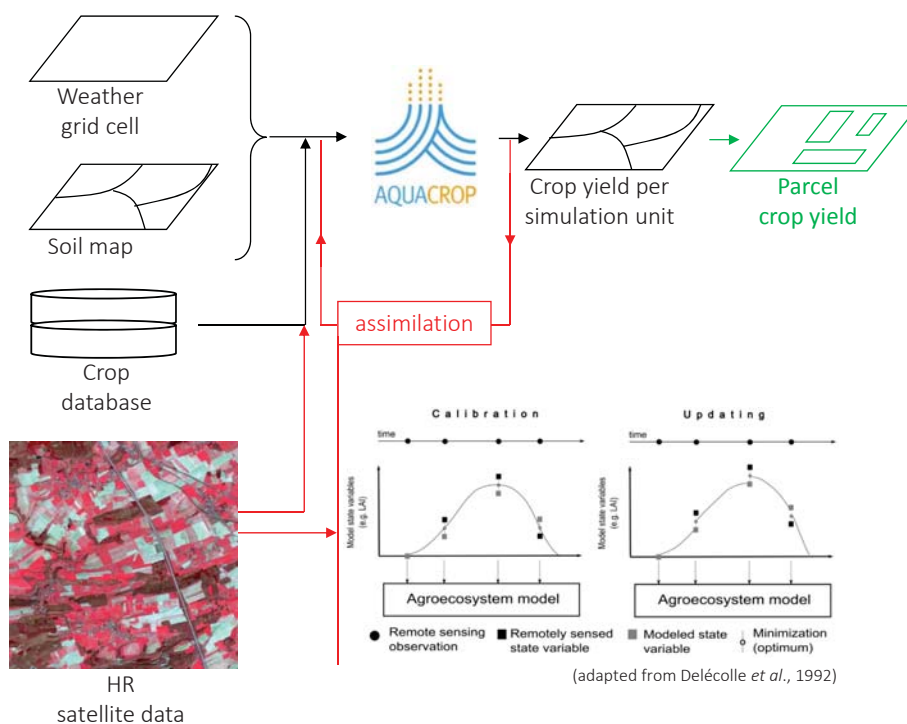
backscatter
~
soil water content
~
irrigation

- + atmospheric conditions;
- + cost;
- + commercial potential.



3.i Regional (detailed) crop monitoring

- work-flow -



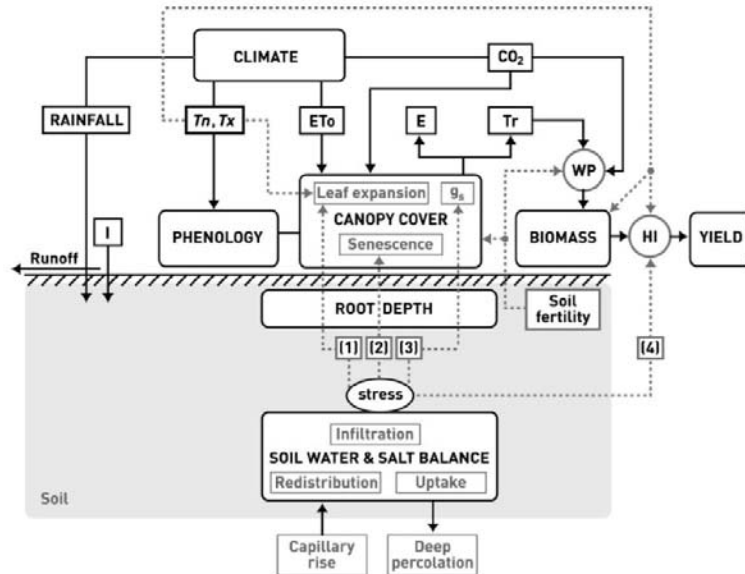
3.ii AquaCrop (FAO)

- how does it work? -

simple & solid

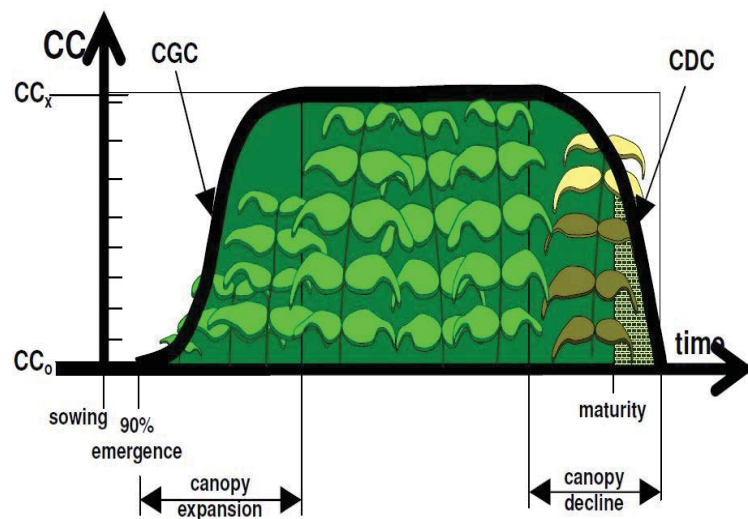
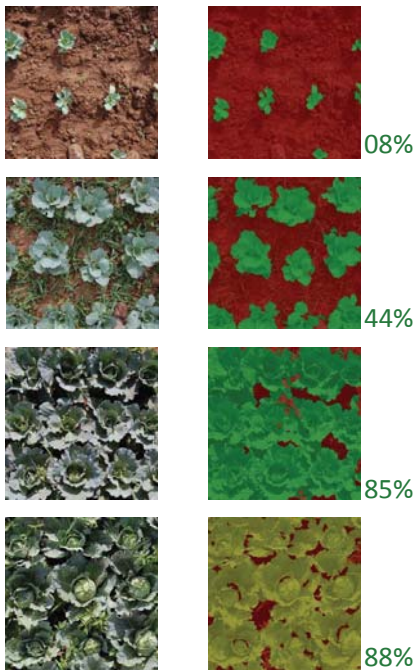
$$B = WP \cdot \sum Tr \text{ or } \text{Biomass} = \text{Water productivity} \cdot \text{Sum of transpiration}$$

$$Y = HI \cdot B \text{ or } \text{Yield} = \text{Harvest index} \cdot \text{Biomass}$$



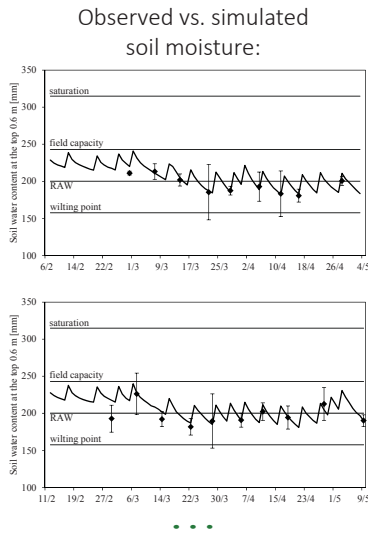
3.iii Crop input

- canopy cover -



3.iv Results

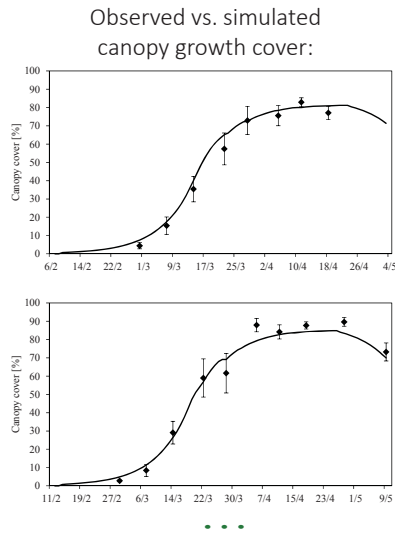
- soil moisture, canopy growth, yield: e.g. cabbage -



①

Soil moisture:

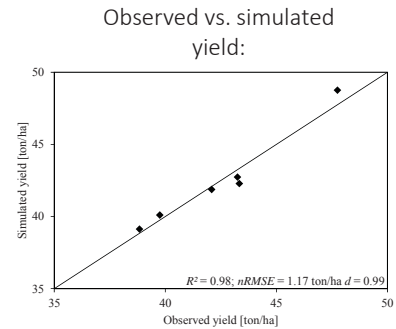
- soil type;
- irrigations;
- ...



②

Canopy cover:

- growth & decline coef.;
- plant densities;
- ...



③

Yield:

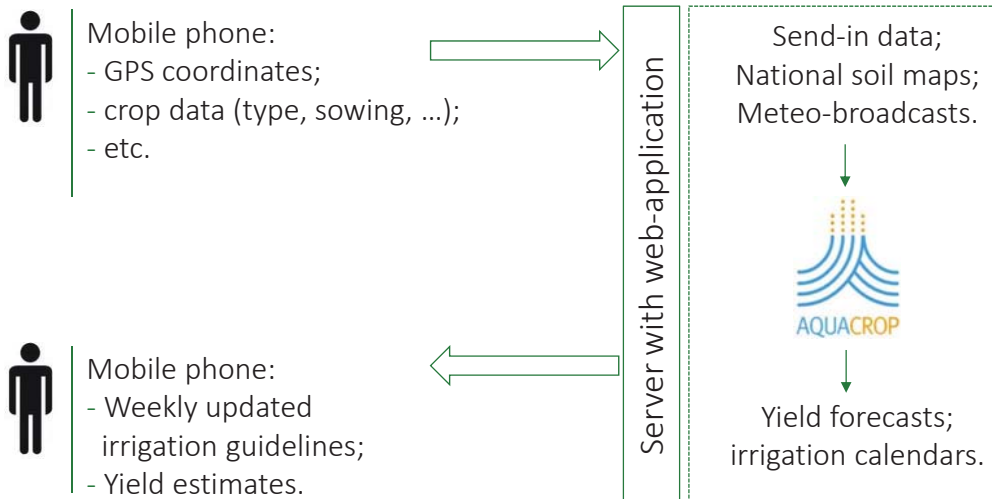
- water productivity;
- harvest index.



... Agricultural advice

- 'modelling for the masses' -

Based on the priorly presented knowledge & expertise:



Gracie!

www.eed.ulg.ac.be



Prof. B. Tychon &
M. Barke, T. Benabelouahab,
M. Bouezmarni, V. Debbaut, A. Denis,
A. Diouf, O. Durgun, M. El Jarroudi,
I. Garba, I. Jacquemin, M. Lang, J. Minet,
P. Ozer, H. Sallah, C. Simonis, K. Sossey,
J. Wellens.