

Regional crop modelling & yield forecasting: opportunities in coupling models and satellite data

Primer encuentro científico de innovación tecnológica

November 20-21, 2014 – La Paz, Bolivia

Joost WELLENS & Johan DEROUANE



... www.eed.ulg.ac.be



Department of sciences and environmental management

unit: Water - Environment - Development

- ① Integrated Water Management
- ② Agro-Meteorology & Crop modelling
- ↓
- ③ Climate change & Food security

-
- ① Different satellite approaches on crop modelling
 - ② AquaCrop: FAO yield response crop model
 - ③ Model coupling
 - ④ The far future ??

1 'New' approach

- from regional towards field -

Global Monitoring for Food Security



&

climate data:
rainfall
temperature
 ET_0

AgroMetShell
agro-meteorological data:
planting
crop cycle
crop coefficients
soil type

multiple
regression

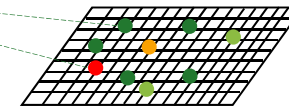
best variables
cotton in Burkina:
initial water content
NDVI max
 ET_R development phase

$R^2 = 0,75$
error = 73 kg/ha
(5,9% of 1.120 kg/ha yield)

Actual research ...



climate data
soil data



'point'
results



regional
yield,
water use,
...

2.i AquaCrop

- how does it work? -

simple
&
solid

$B = WP \cdot \sum Tr$ or Biomass = Water productivity · Sum of transpiration

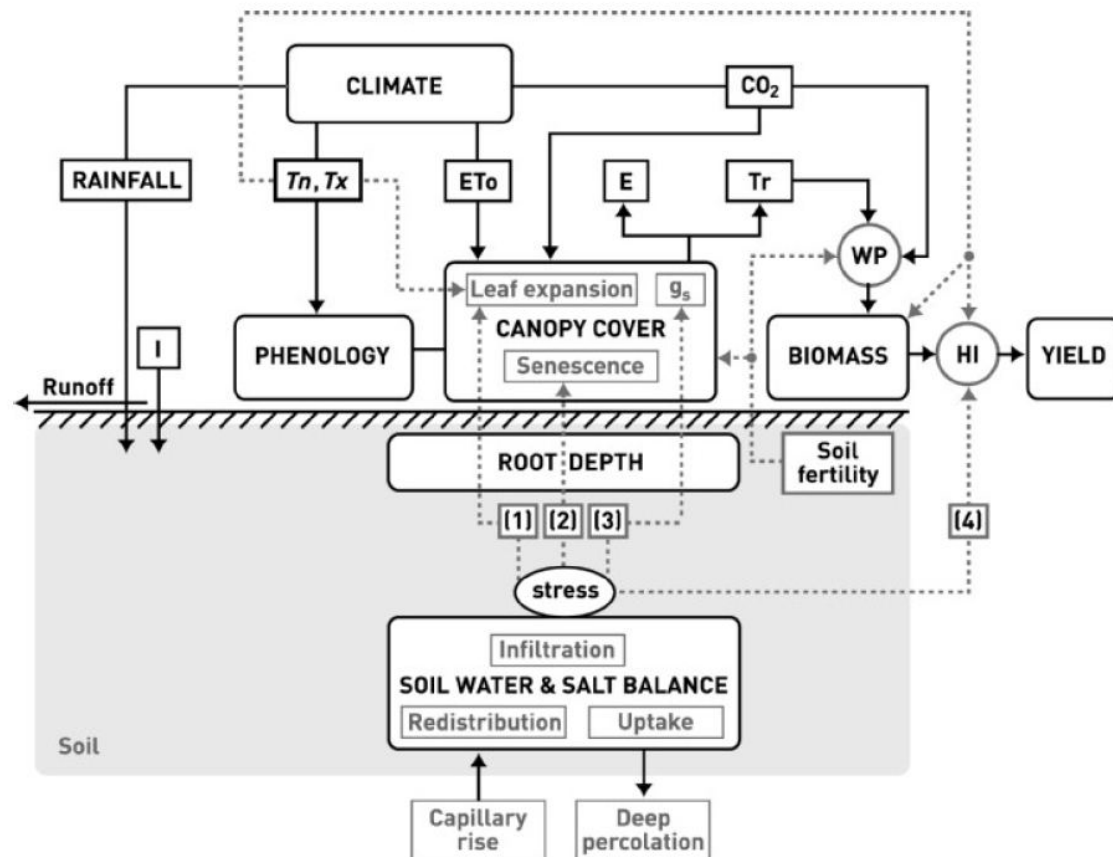
$Y = HI \cdot B$ or Yield = Harvest index · Biomass

Study effects of:

- climate;
- soil;
- crops;
- irrigation;
- ...

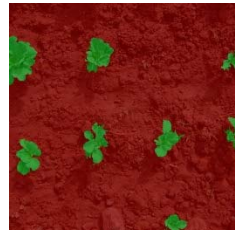
On:

- yield;
- water balance;
- ...

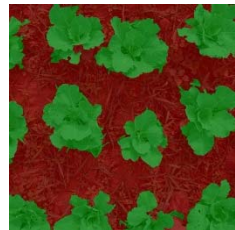


2.ii Crop input

- canopy cover -



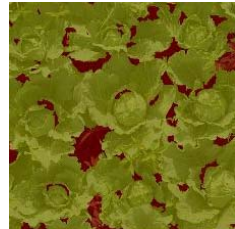
08%



44%



85%



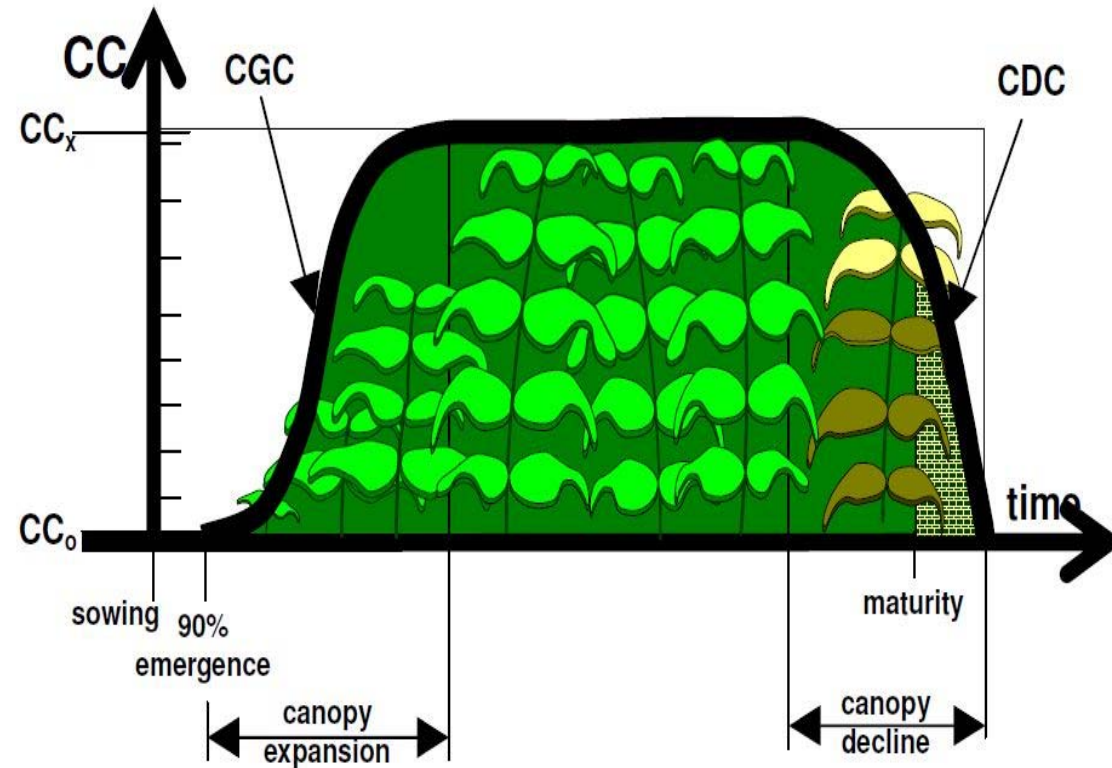
88%

1

Overhead pictures

2

Canopy cover (eCognition)



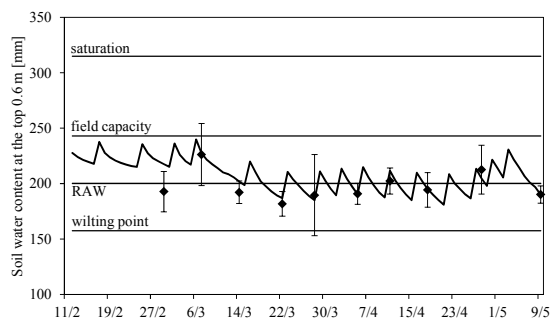
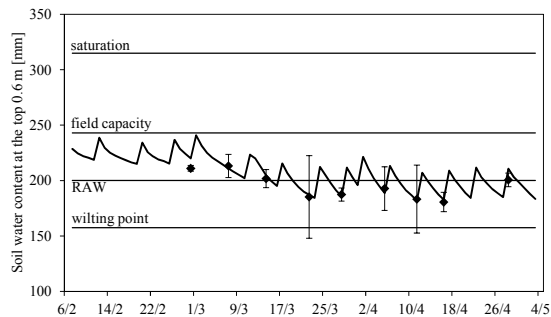
3

Graph: - crop characteristics;
- canopy growth & decline;
- phenological stages.

2.iii Results

- soil moisture, canopy growth, yield: e.g. cabbage -

Observed vs. simulated soil moisture:



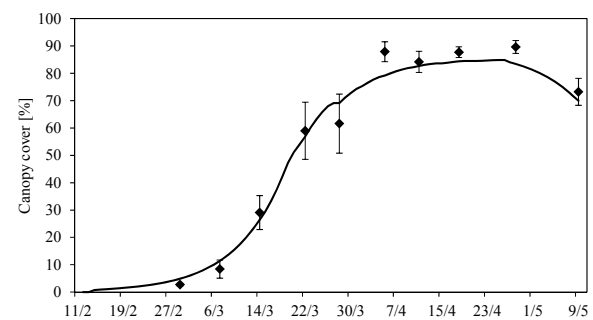
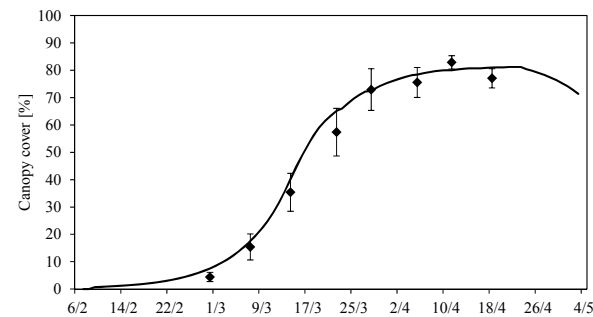
...

1

Soil moisture:

- soil type;
- irrigations;
- ...

Observed vs. simulated canopy growth cover:



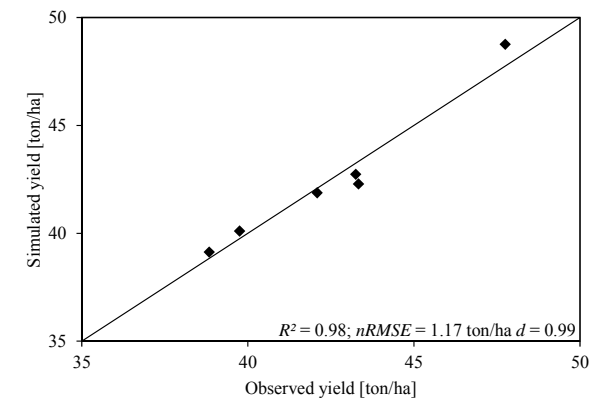
...

2

Canopy cover:

- growth & decline coef.;
- plant densities;
- ...

Observed vs. simulated yield:



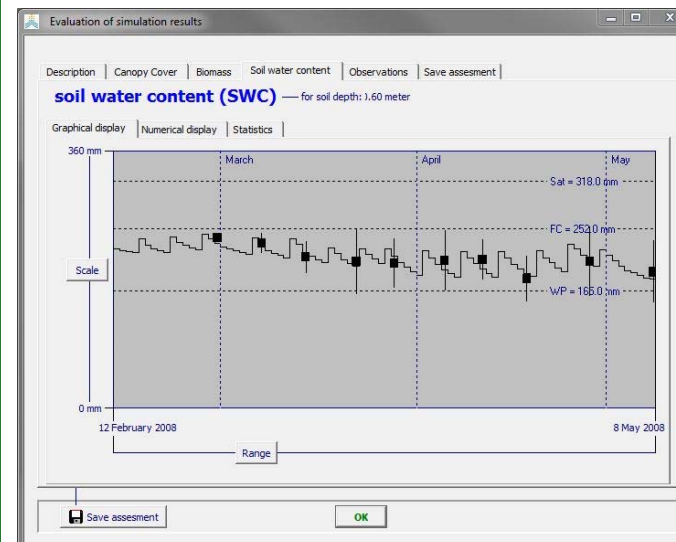
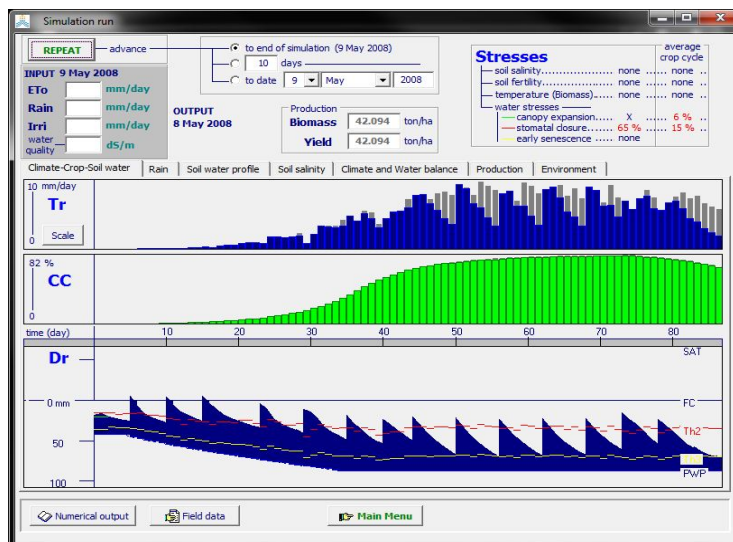
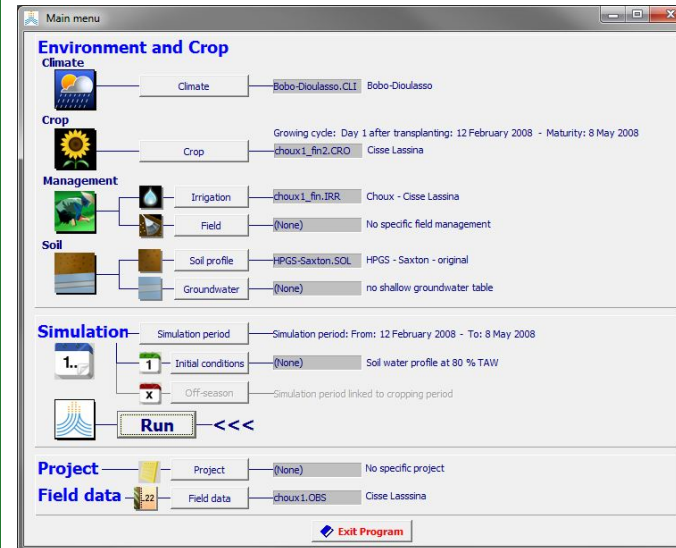
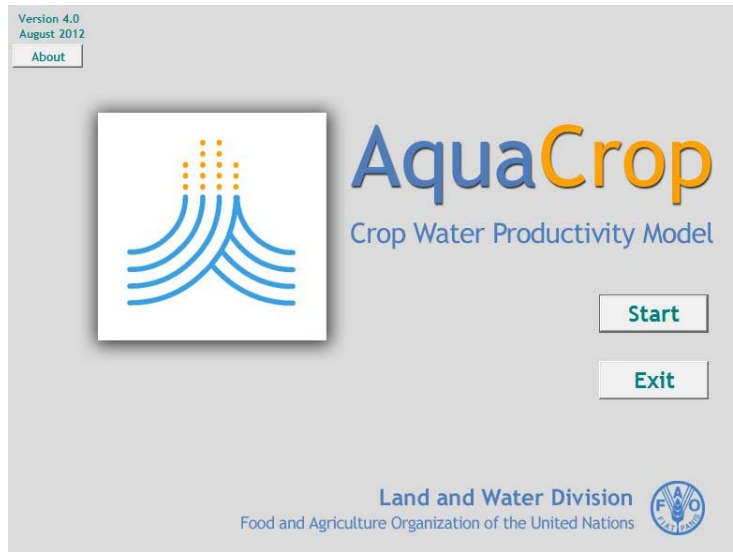
3

Yield:

- water productivity;
- harvest index.

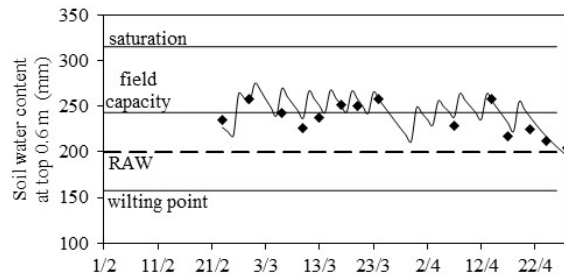
... AquaCrop

- user friendly -



2.iv Application

- irrigation guidelines -



①

Inefficient irrigation,
percolation losses.

Irrigation: 555 mm
Drained: 76 mm
Yield: 52 ton/ha

Irrigation guidelines for:

Cabbage:

Soil type: clayish alluvial soil

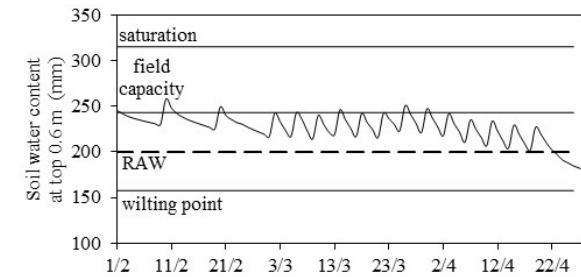
Irrigation application gross depth: 35 mm

month	February			March			April		
decade	1	2	3	1	2	3	1	2	3
interval	10 days			4 days					
crop stage	transplanting			canopy development			harvest		
	initial						mid		
							late		

irrigation dose for field preparation
0.6 field application efficiency (Bos and Nugteren, 1990)

②

Irrigation guidelines chart



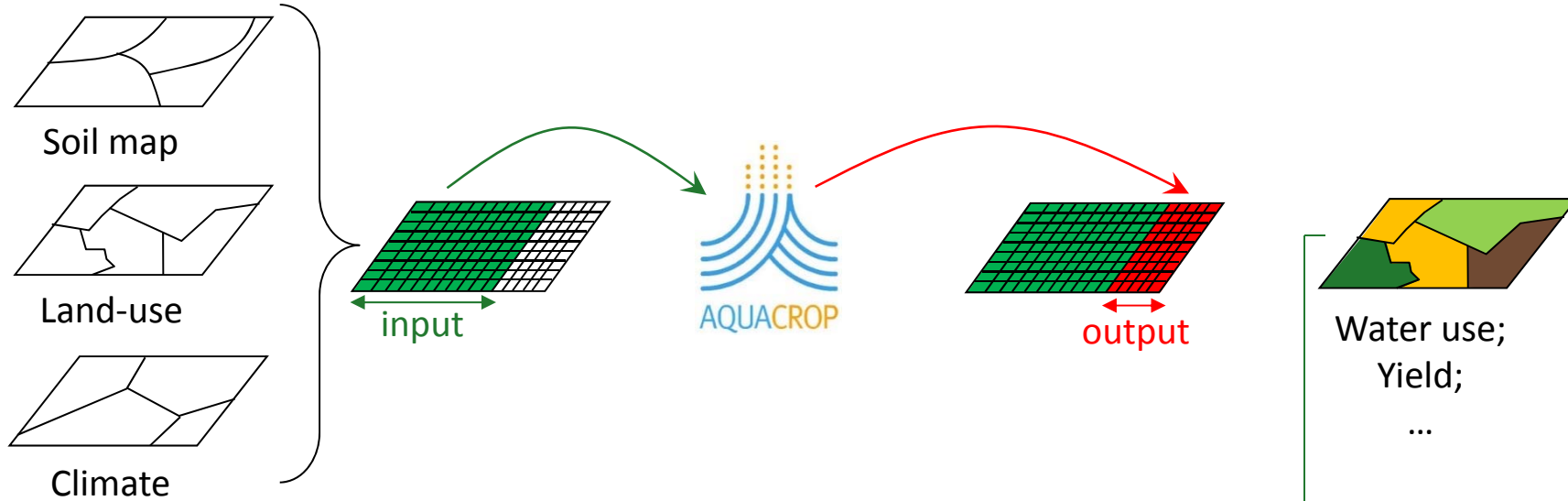
③

Efficient irrigation,
No losses,
Optimal yield.

Irrigation: 455 mm (-18%)
Drained: 1 mm
Yield: 53 ton/ha

3.i Model coupling

- 'accompanying' studies -



Climatology:

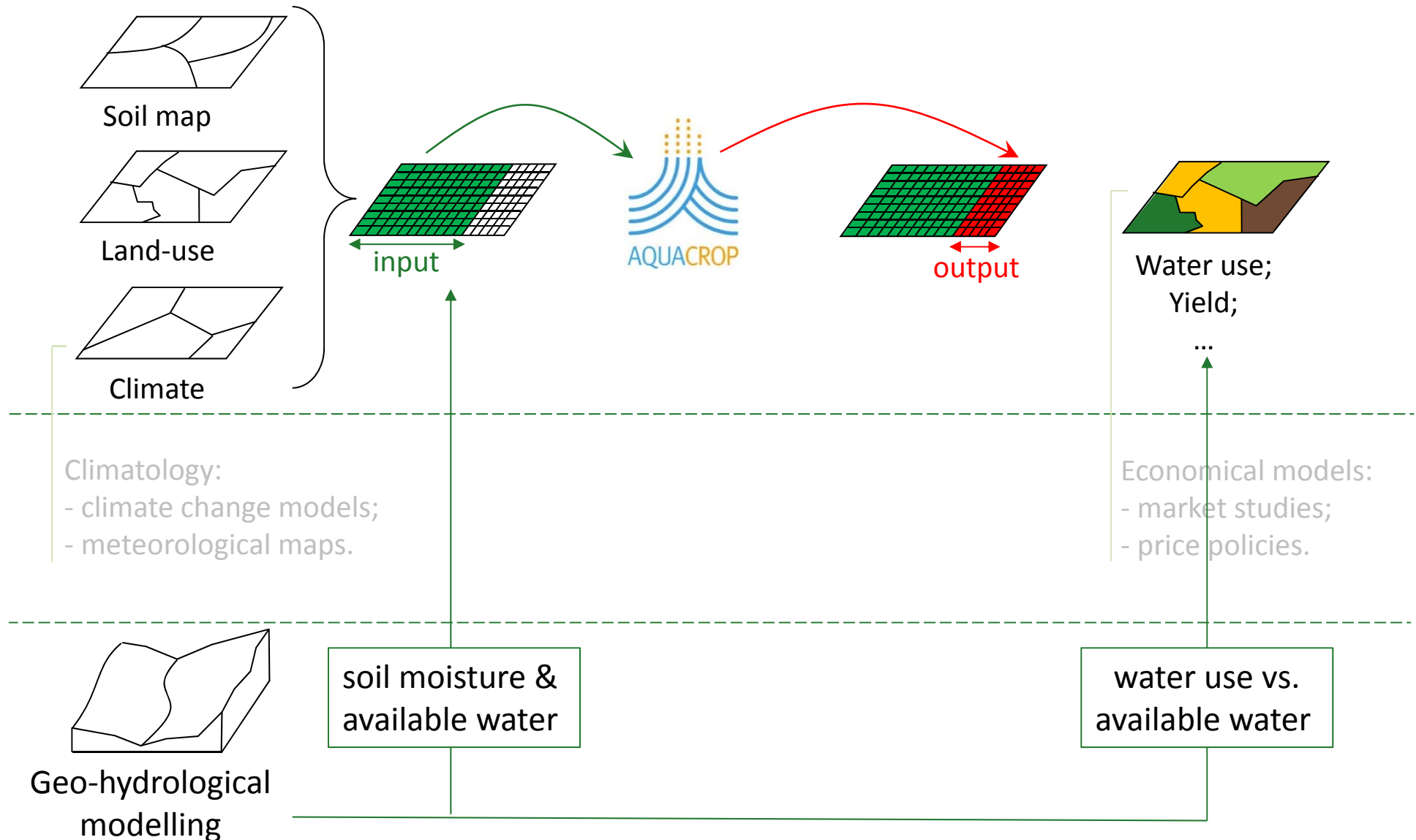
- climate change models;
- meteorological maps.

Economical models:

- market studies;
 - price policies.
-

3.ii Model coupling

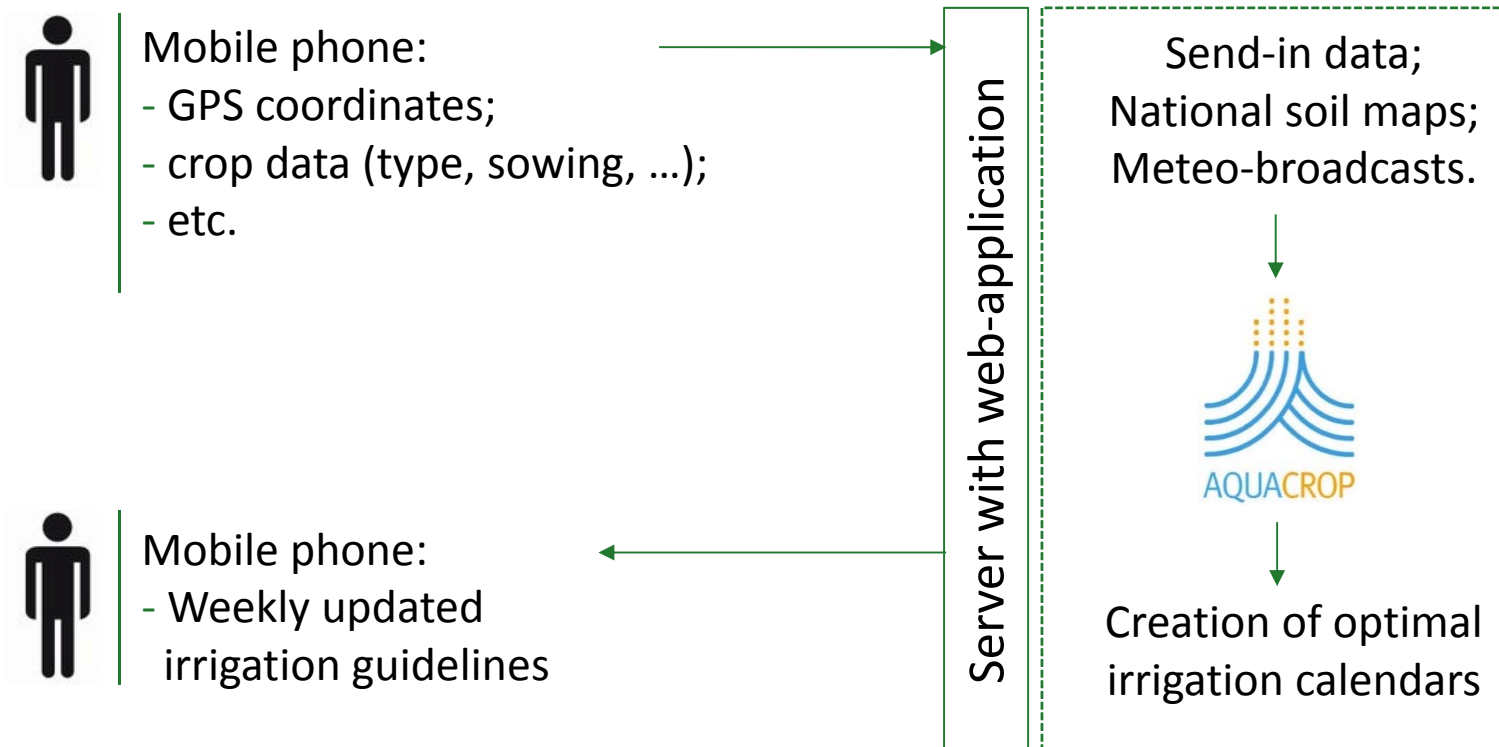
- 'accompanying' studies -



... Irrigation counselling

- 'modelling for the masses' -

Based on the priorly presented knowledge & expertise:



... Knowledge & Expertise

- partnership in international cooperation programs -



University of Liege

Department Sciences and Management of the Environment

Unit Water Environment Development

| www.eed.ulg.ac.be

| Joost.Wellens@ulg.ac.be

Hydrogeology ■ ■ ■
Environmental Geology

University of Liege

Faculty of Applied Sciences

Hydrogeology & Environmental Geology Dpt

| www.facsu.ulg.ac.be/cms/c_681446/fr/

| hydrogeologie-et-geologie-de-l-environnement

| Serge.Brouyere@ulg.ac.be



Public Service of Wallonia

Department of Environment & Water

| www.environnement.wallonie.be

| Johan.Derouane@spw.wallonie.be

Gracias!