

# Gravitational lensing search for dark matter halos



*D. Coss*

3rd CosPa Meeting  
Université de Liège  
November 19, 2014

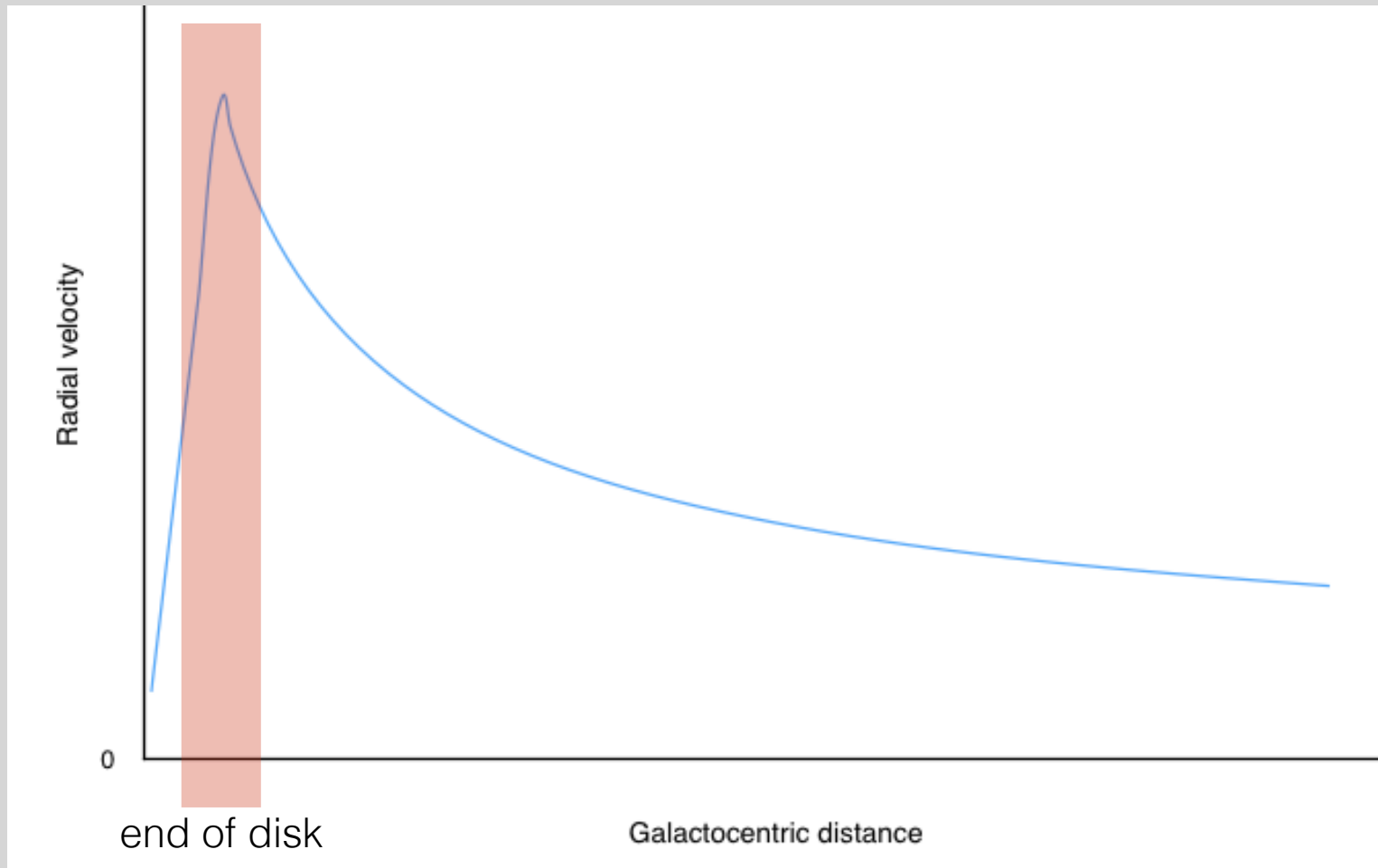
Judith Biernaux  
Groupe OrCA - AGO

# Spiral Galaxies

$$v(R) = \sqrt{\frac{GM(R)}{R}}$$

# Spiral Galaxies

$$v(R) = \sqrt{\frac{GM(R)}{R}}$$

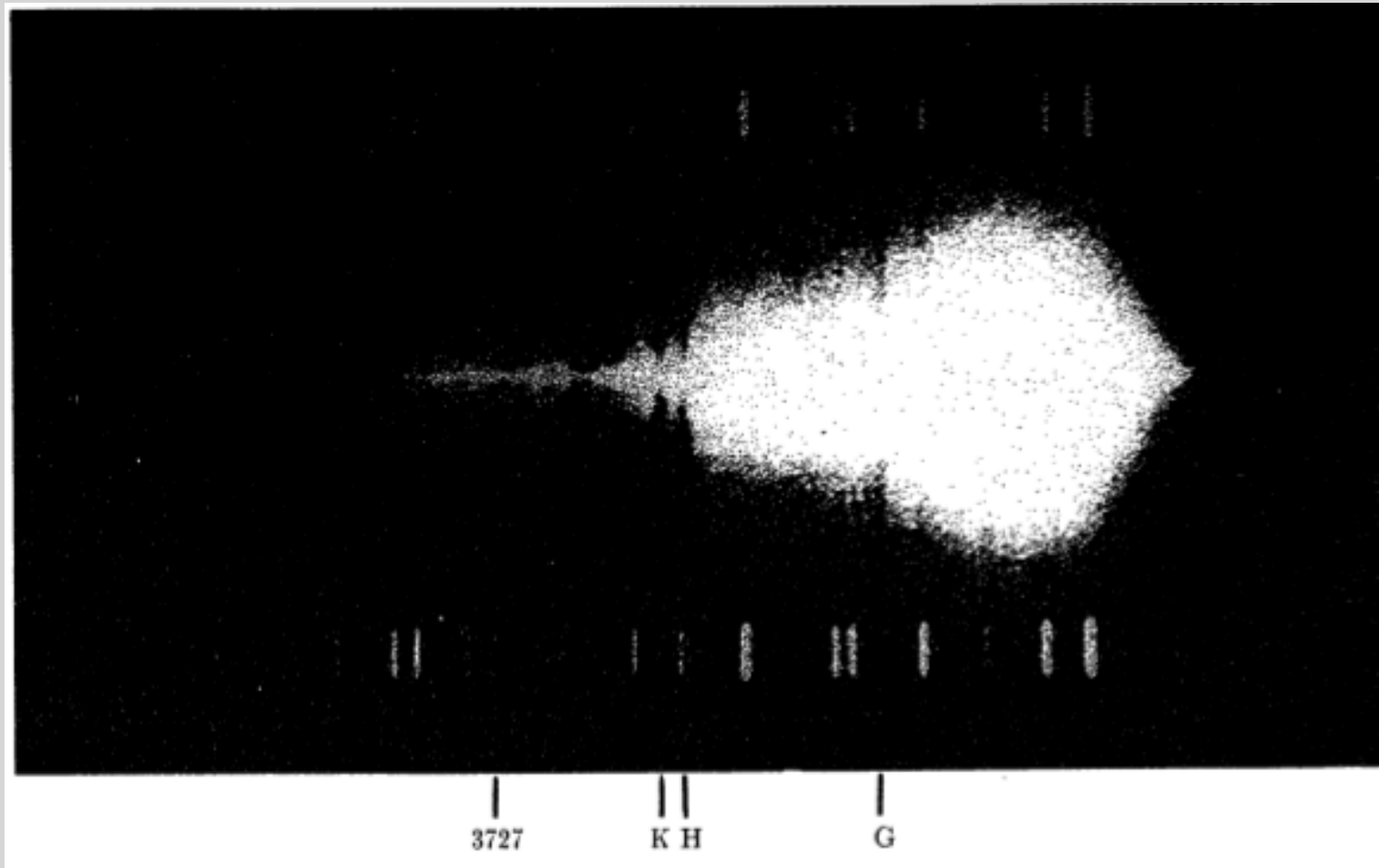


# Spiral Galaxies

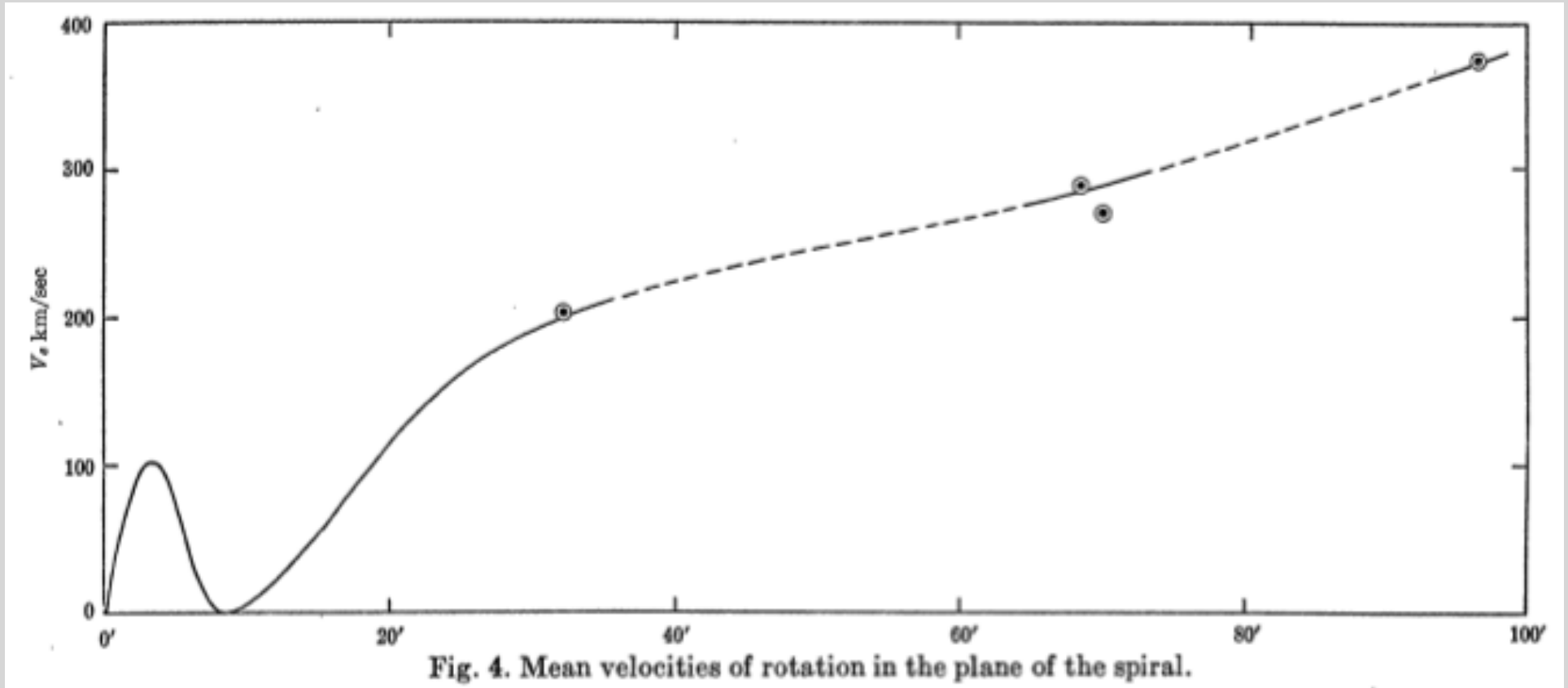


Horace Babcock (1912 - 2003)

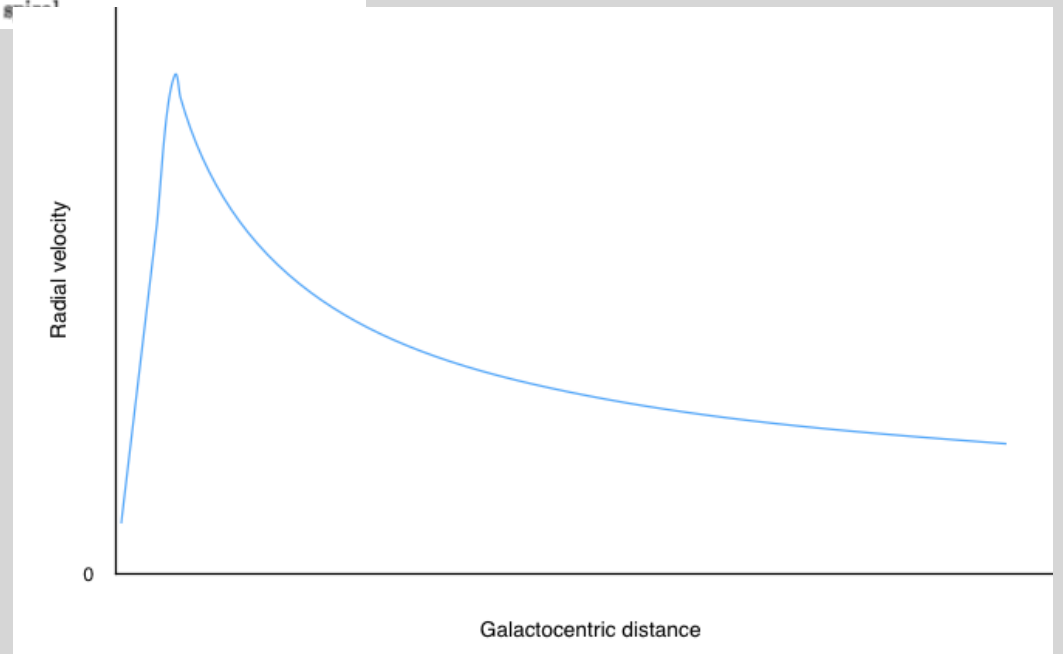
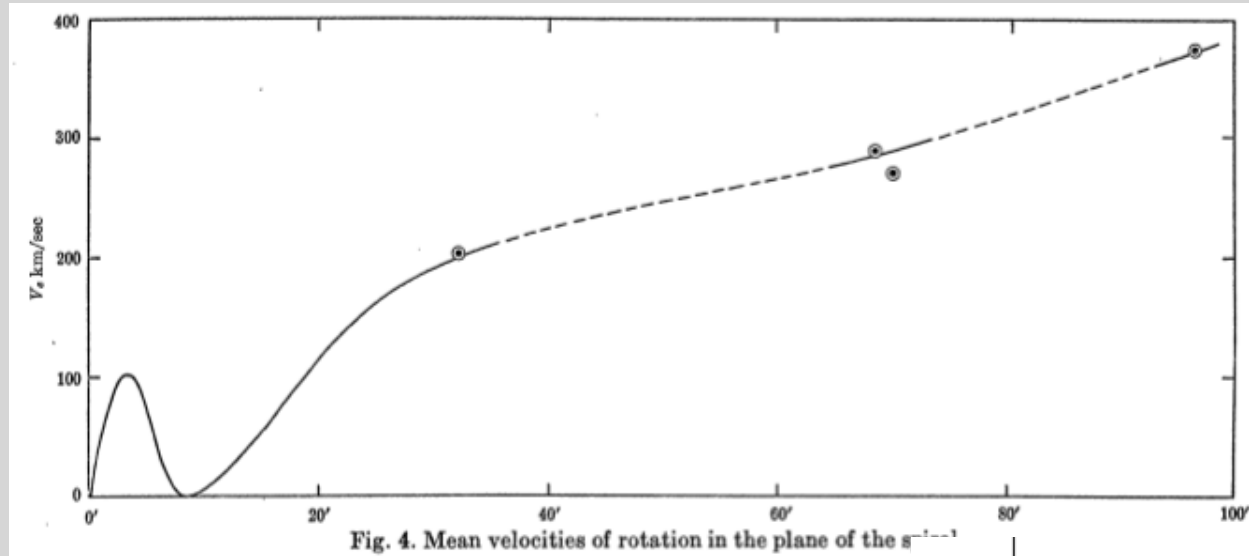
# Spiral Galaxies



# Spiral Galaxies



# Spiral Galaxies



# Spiral Galaxies

*The rotation of the Andromeda Nebula (Lick Obs. Bulletin, Vol. XIX, 1939)*

Lick Obs. and Mount Wilson Obs.

First recorded spiral galaxy rotation curve

*"The obvious interpretation of the nearly constant angular velocity from a radius of 20 minutes of arc outward is that a very great proportion of the mass of the nebula must lie in the outer regions."*



# Spiral Galaxies

*The rotation of the Andromeda Nebula* (Lick Obs. Bulletin, Vol. XIX, 1939)

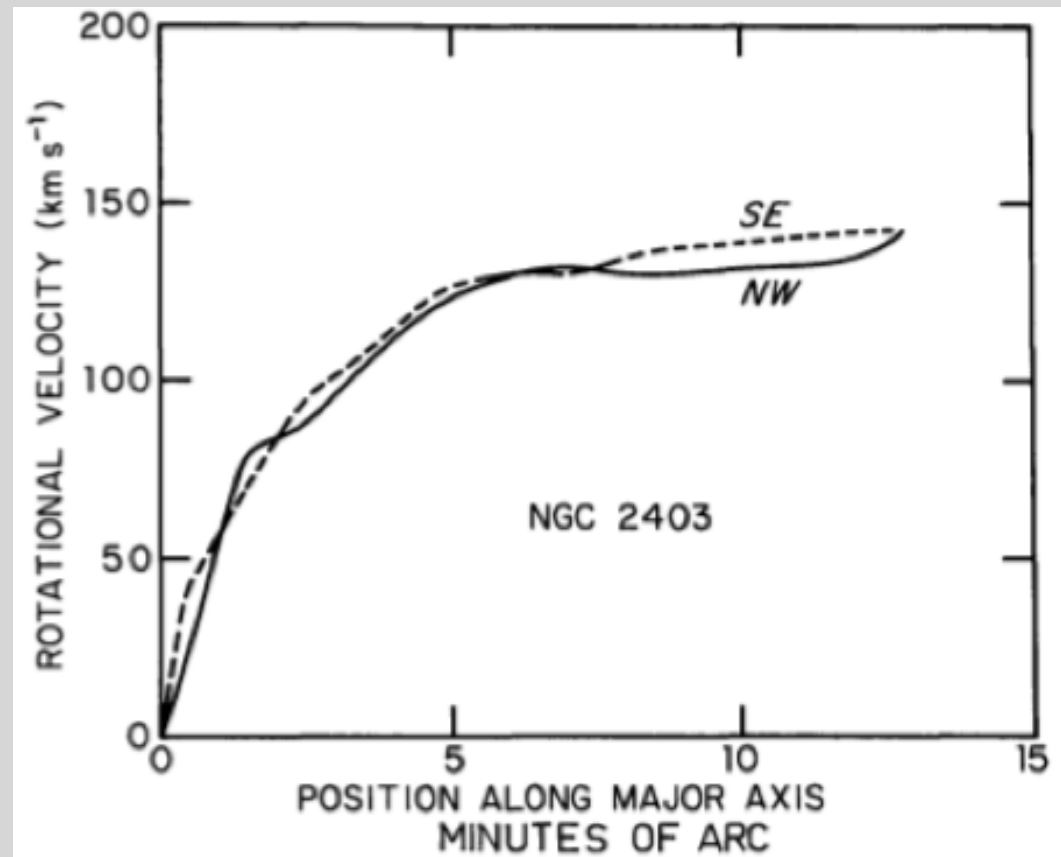
Lick Obs. and Mount Wilson Obs.

First recorded spiral galaxy rotation curve

*"The great range in the calculated ratio of mass to luminosity in proceeding outward from the nucleus suggests that absorption plays a very important role in the outer portions of the spiral, or perhaps, that new dynamical considerations are required."*

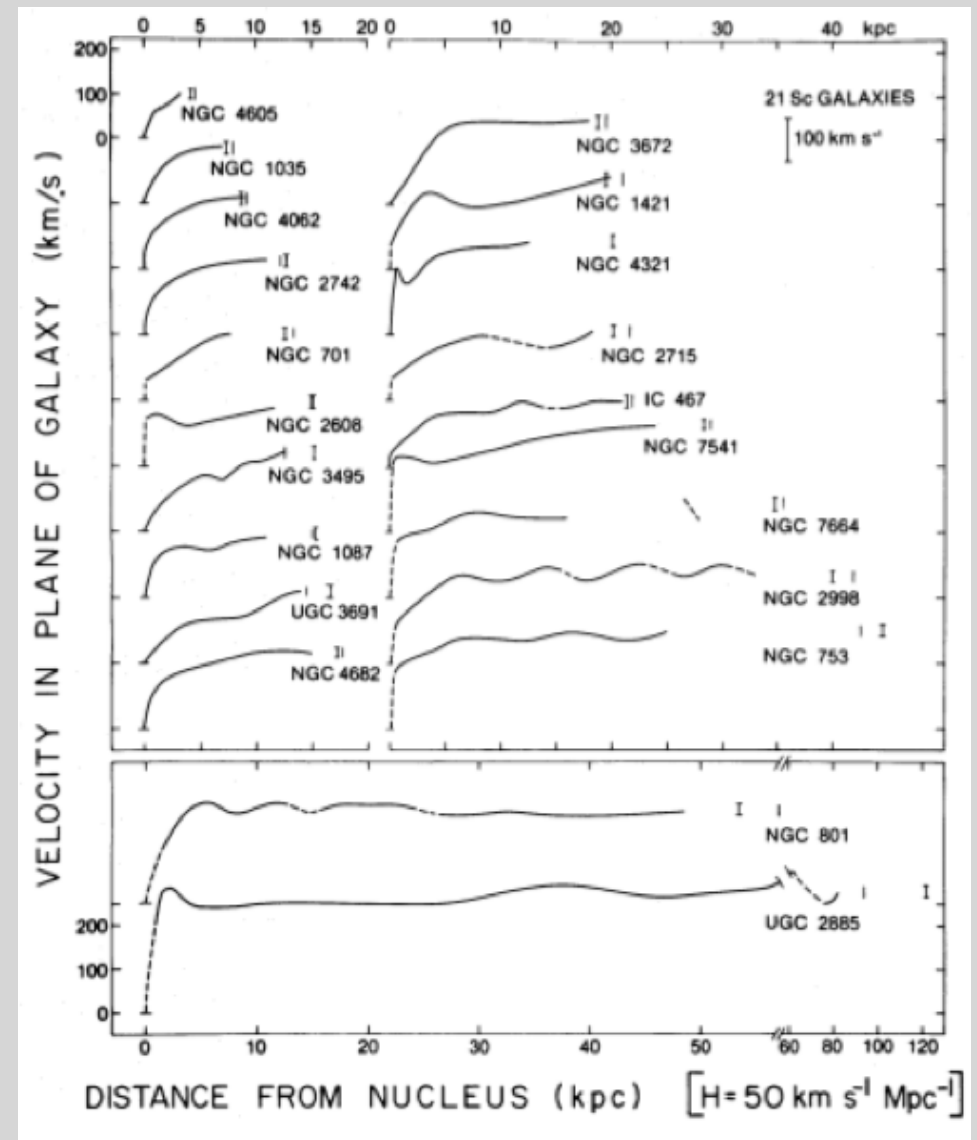
# Spiral Galaxies

- Shostak and Rogstad, 1973



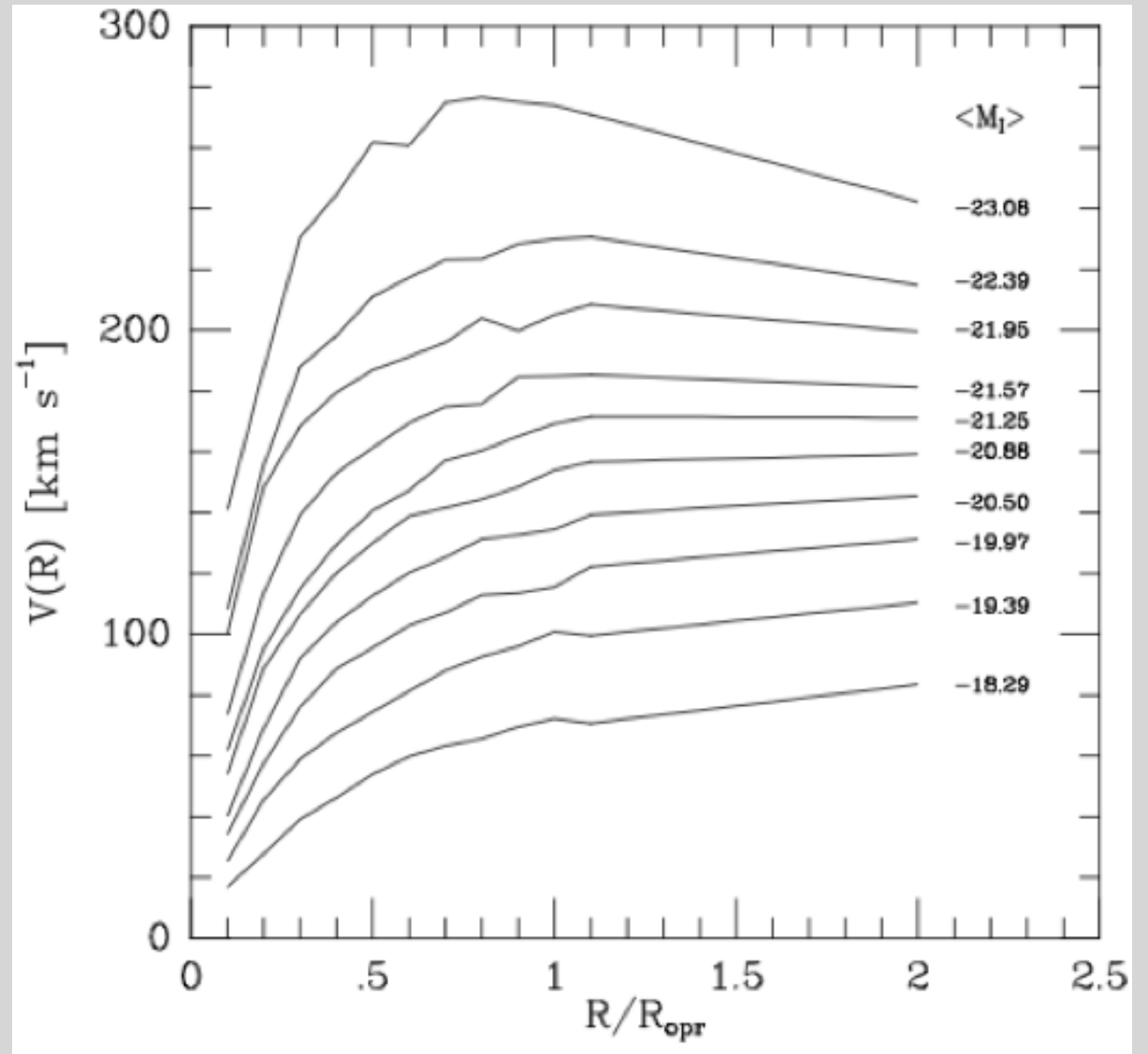
# Spiral Galaxies

- Shostak and Rogstad, 1973
- Rubin, Ford and Thonnard, 1980



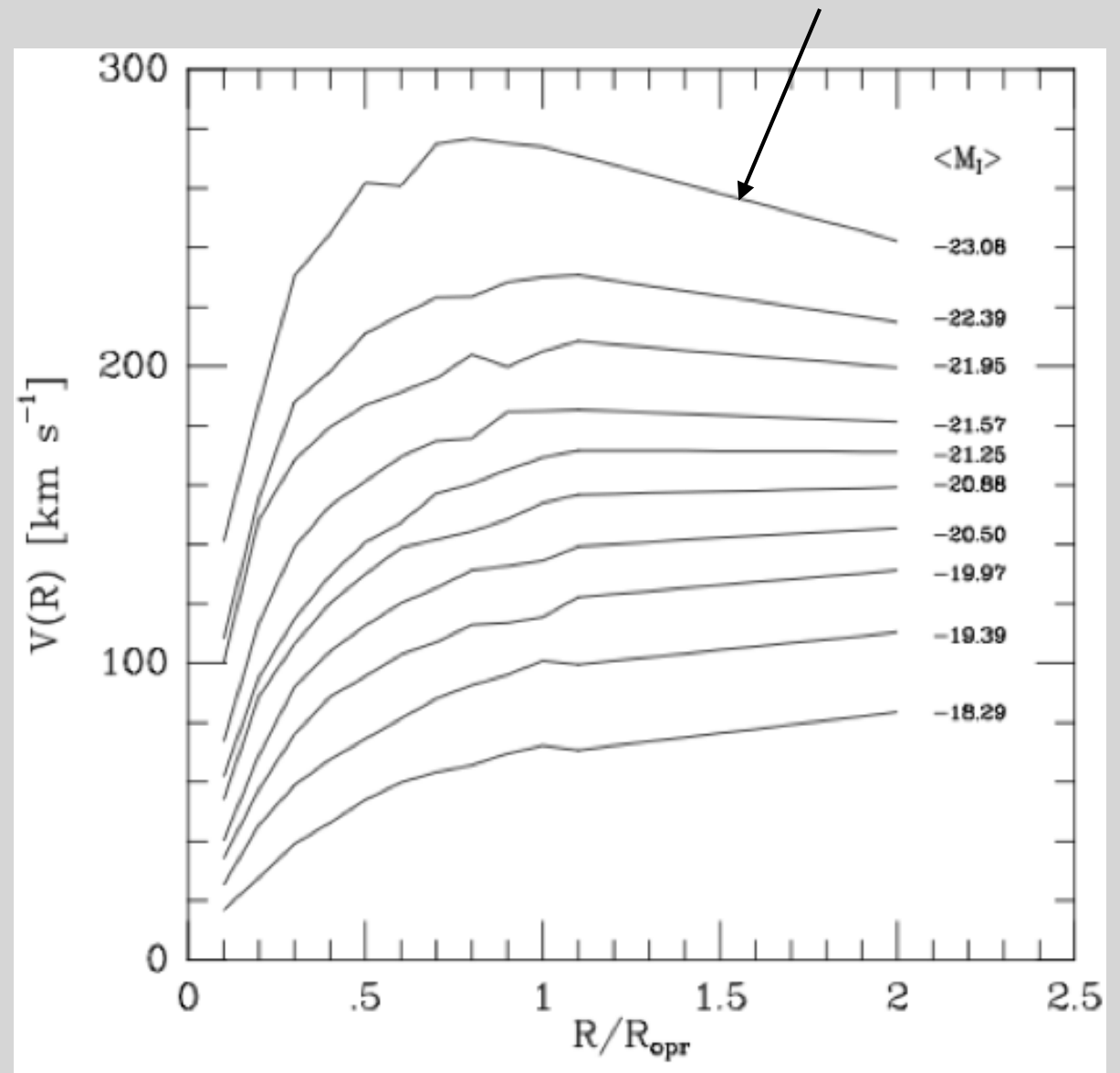
# Spiral Galaxies

- Shostak and Rogstad, 1973
- Rubin, Ford and Thonnard, 1980
- Persic, Salucci and Stel, 1995 (987 galaxies !)



# Spiral Galaxies

- Shostak and Rogstad, 1973
- Rubin, Ford and Thonnard, 1980
- Persic, Salucci and Stel, 1995 (987 galaxies !)

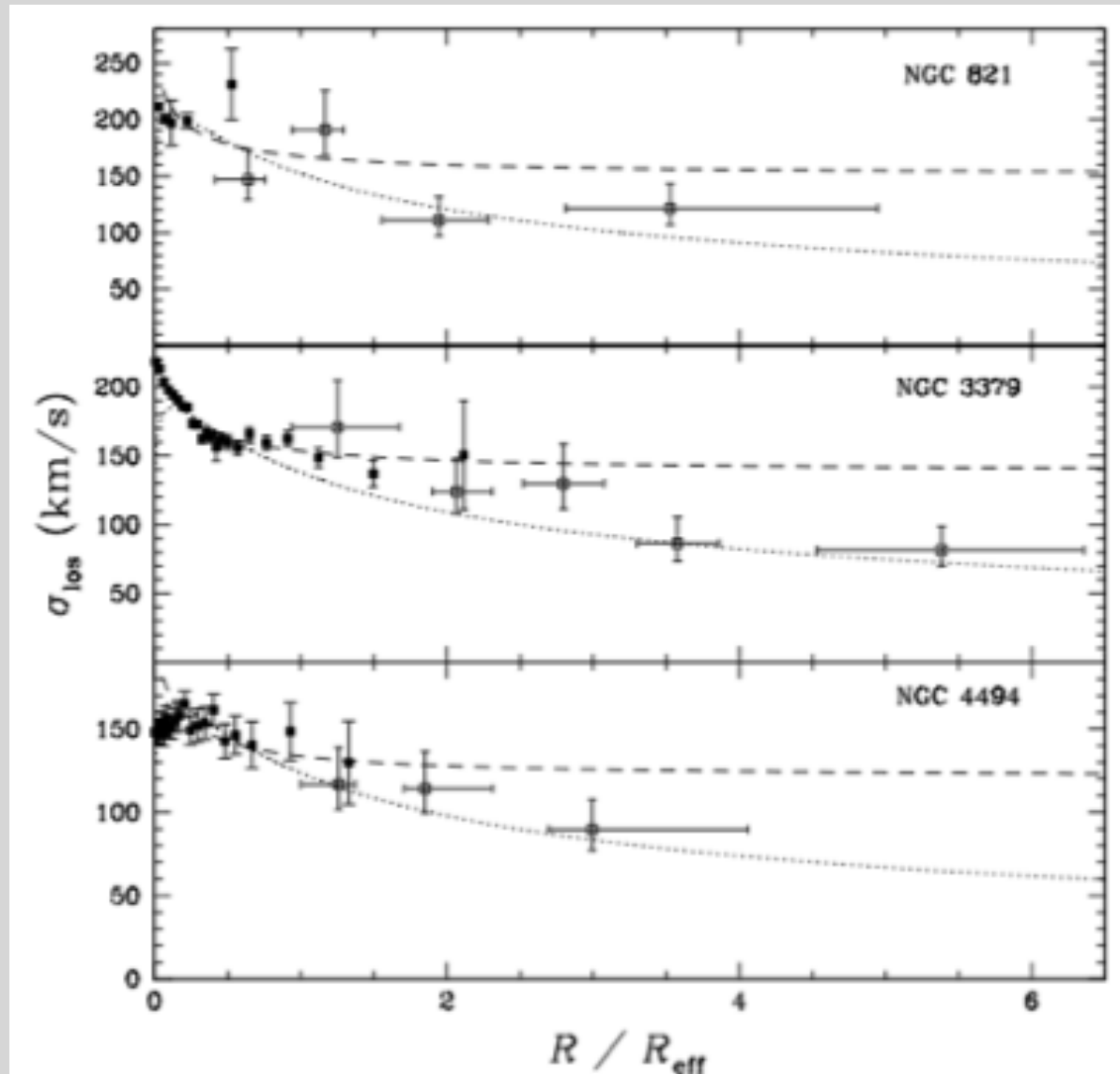


# Elliptical galaxies



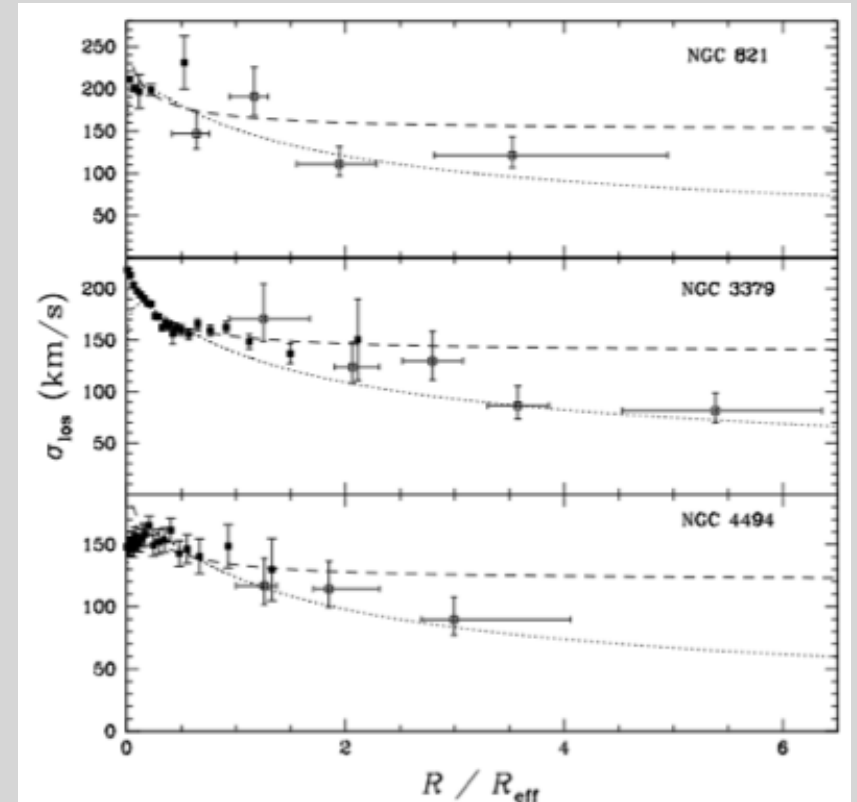
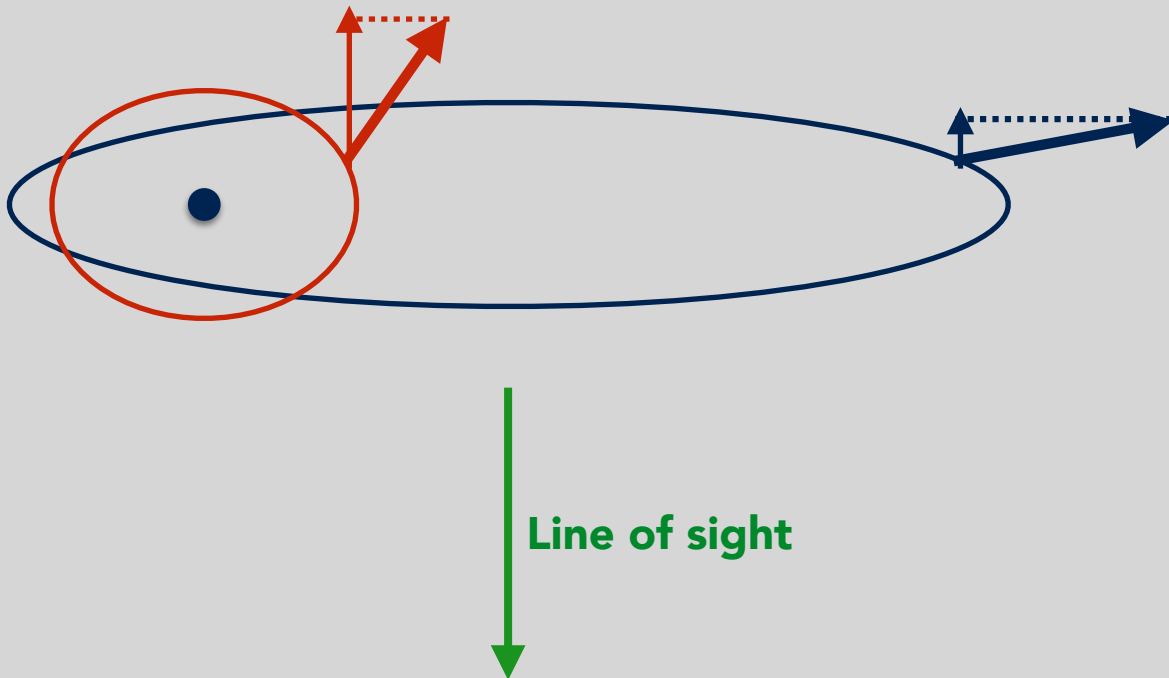
# Elliptical galaxies

- Romanowsky et al., 2003



# Elliptical galaxies

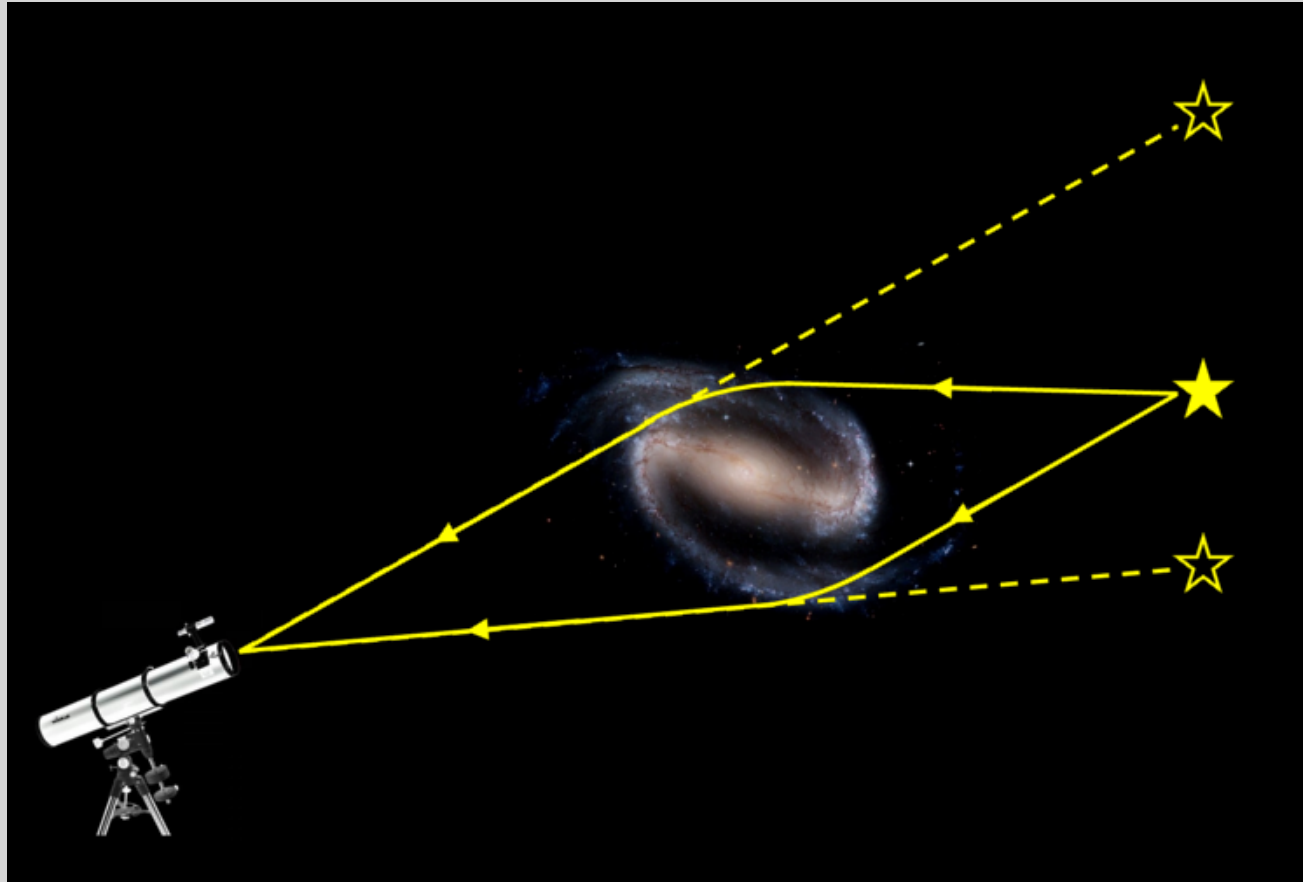
- Romanowsky et al., 2003
- Dekel et al., 2005





# Elliptical galaxies

Gravitational lensing

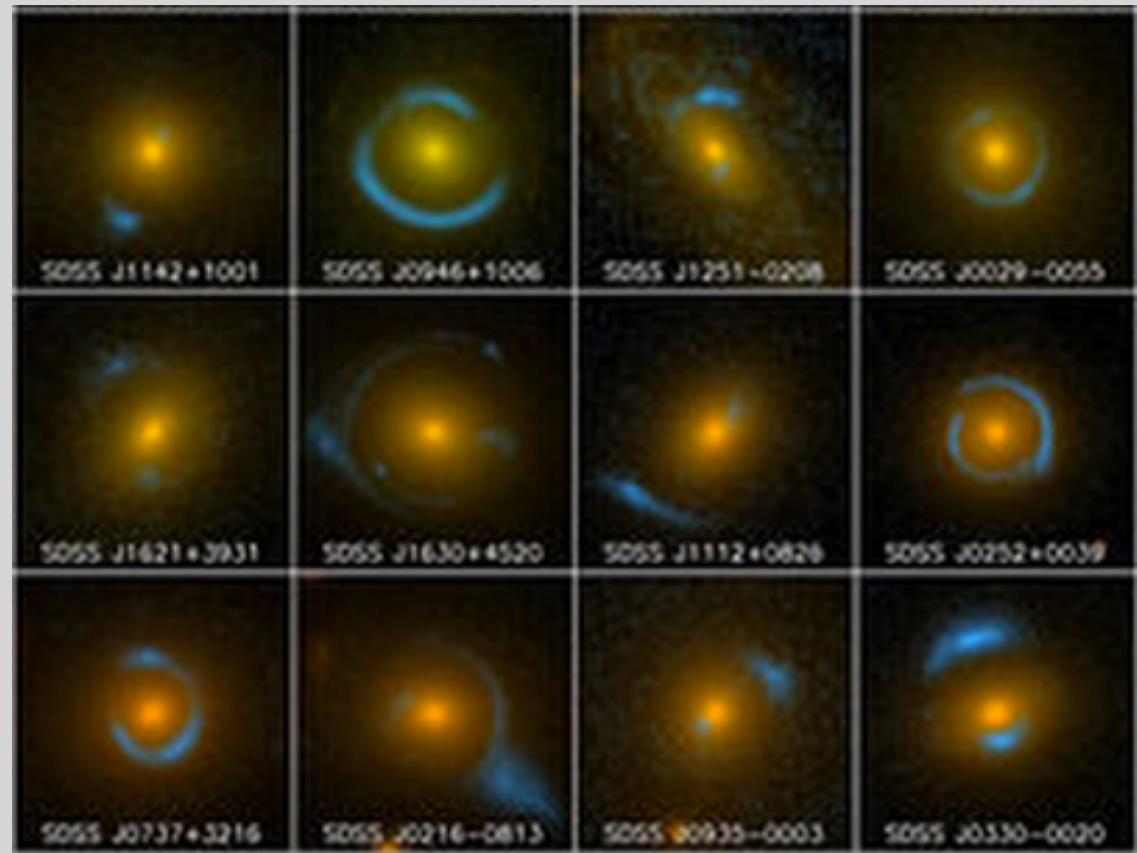


# Elliptical galaxies

Gravitational lensing

- SLACS (HST)

Galaxy - Galaxy



# Elliptical galaxies

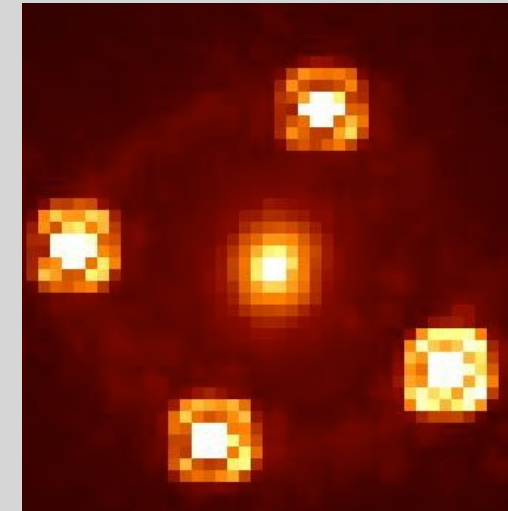
Gravitational lensing

- SLACS (HST)

Galaxy - Galaxy

- CASTLES (HST)

Quasar - Galaxy



**HE0435-1223**

# Elliptical galaxies

Gravitational lensing

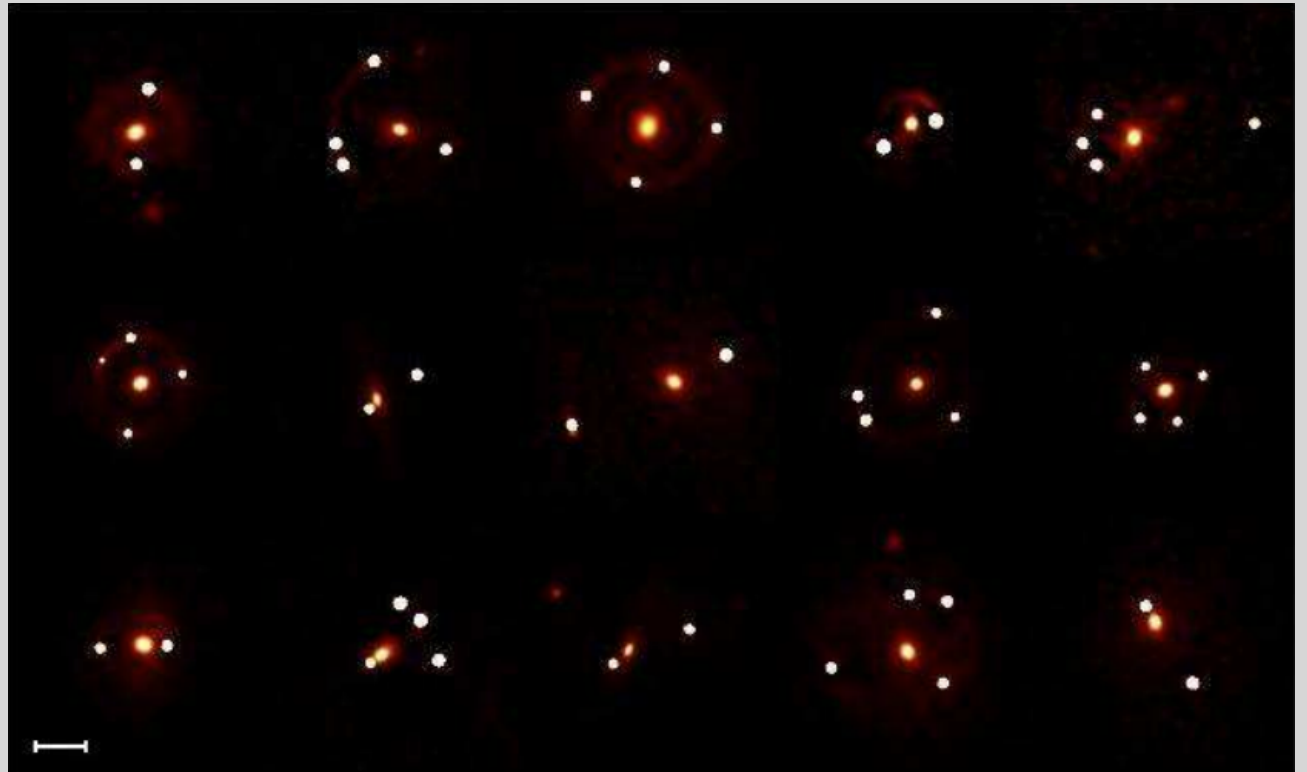
- SLACS (HST)

Galaxy - Galaxy

- CASTLES (HST)

Quasar - Galaxy

Magain and Chantry



# Elliptical galaxies

Gravitational lensing

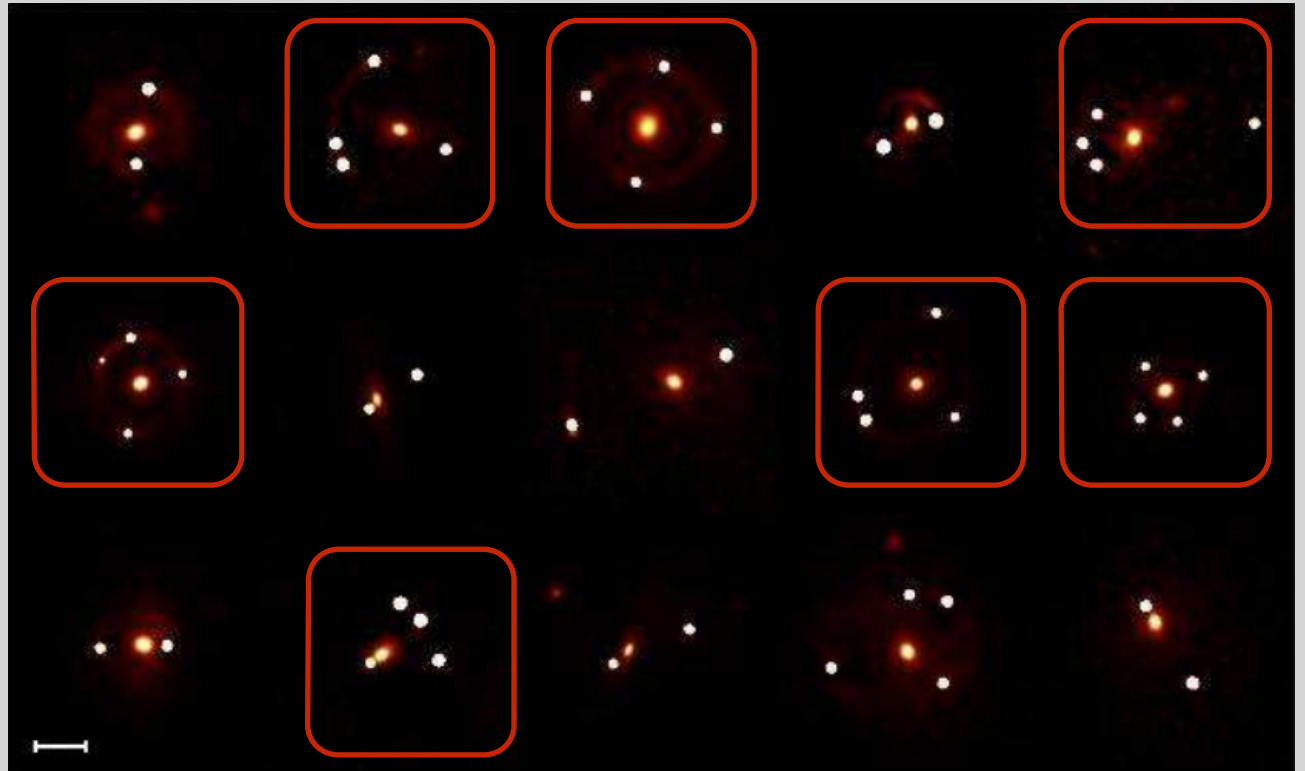
- SLACS (HST)

Galaxy - Galaxy

- CASTLES (HST)

Quasar - Galaxy

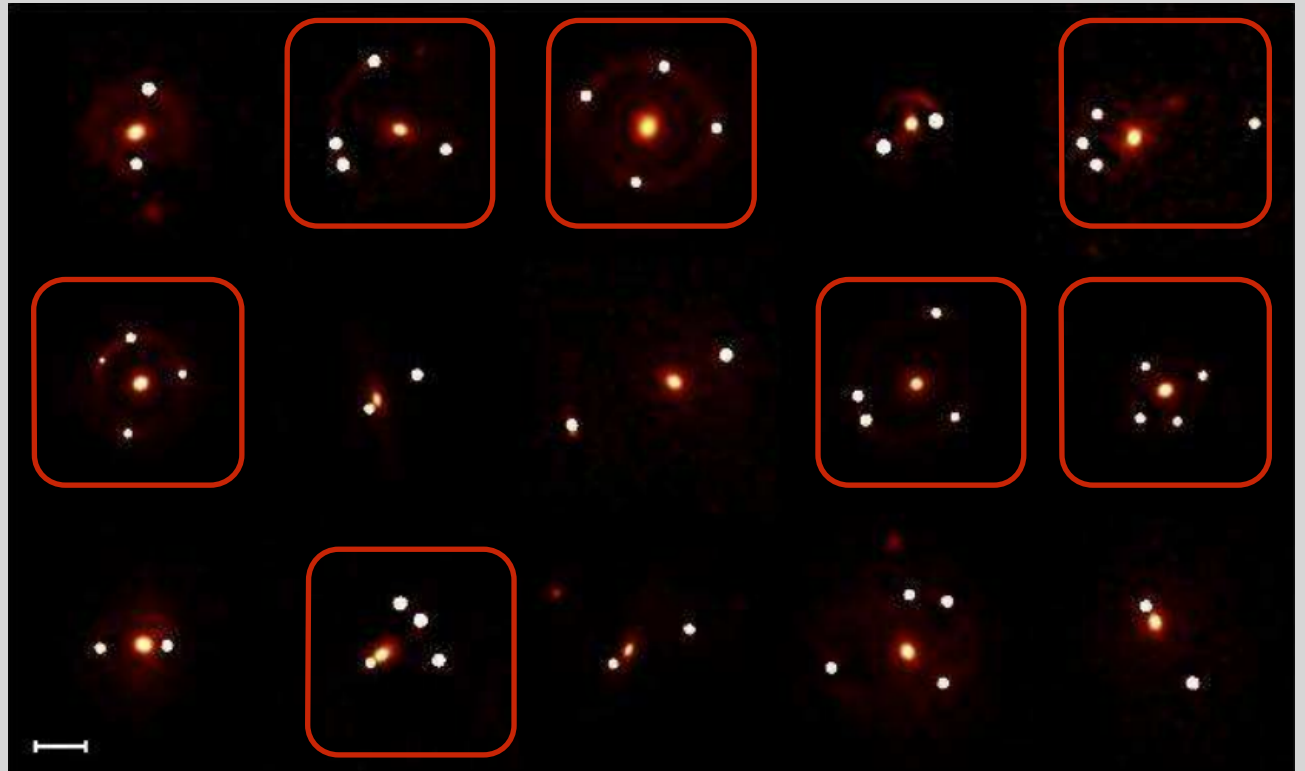
Magain and Chantry



# Elliptical galaxies

Gravitational lensing

- Luminosity profiles (MCS)  
Magain, Courbin &  
Sohy, 1998
- Mass profiles (LENSMODEL)  
Keeton, 2001



# Elliptical galaxies

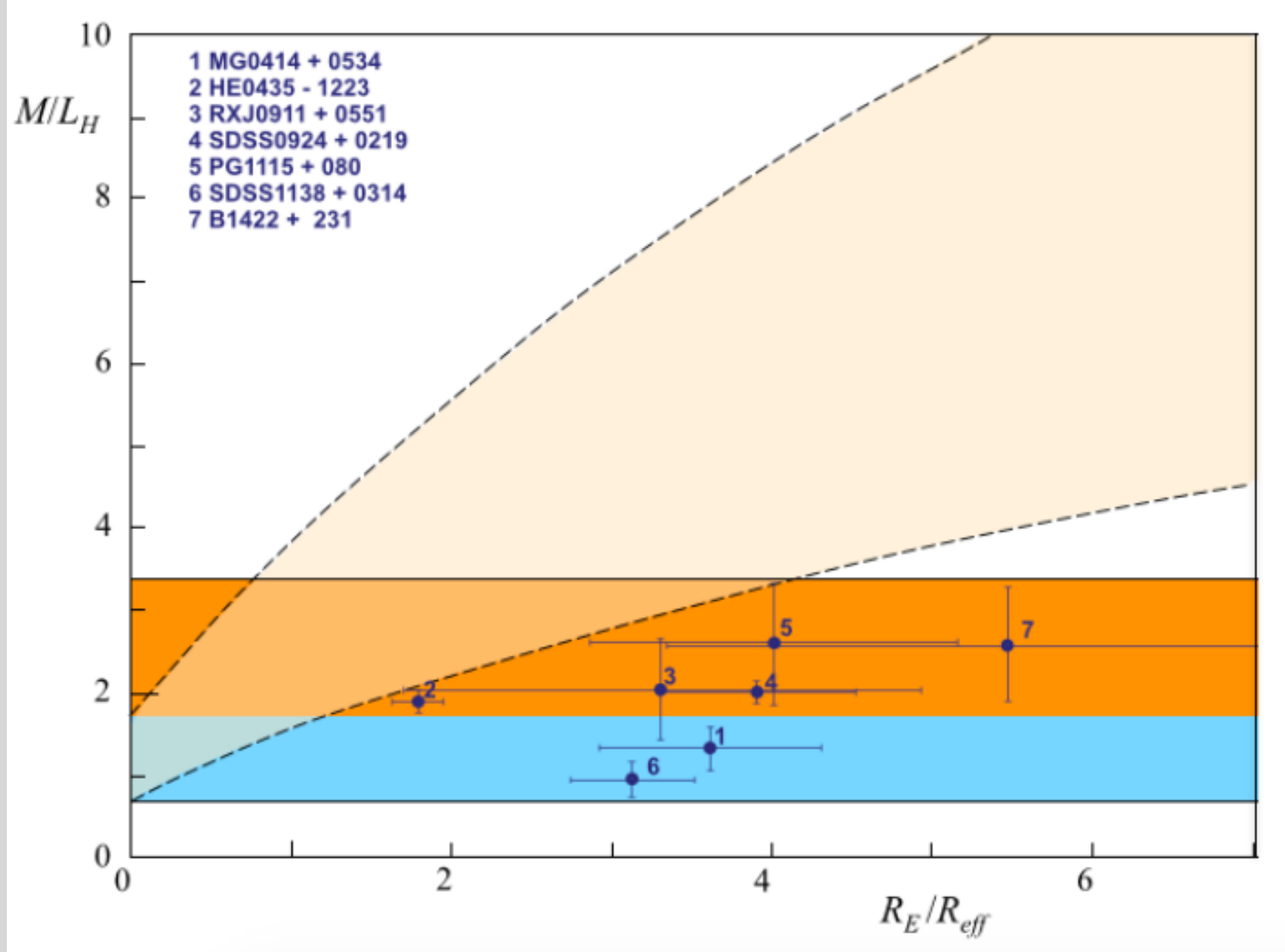
**RESULT #1 : constant M/L vs SIE mass model : the  $\chi^2$  test**

| System        | SIE | constant M/L |
|---------------|-----|--------------|
| MG0414+0534   | 33  | 30           |
| HE0435-1223   | 2.6 | 2.9          |
| RXJ0911+0551  | 200 | 186          |
| SDSS0924+0219 | 5   | 6            |
| PG1115+080    | 20  | 6            |
| SDSS1138+0314 | 1.2 | 0.7          |
| B1422+231     | 7   | 43           |

# Elliptical galaxies

RESULT #2

Biernaux et al. (in preparation)





# Dark matter halos ?



?



# Dark matter halos ?



?



Pfenniger et al., 1994

- Cold gas clouds (H + H<sub>2</sub> + He)

# Dark matter halos ?



?



Pfenniger et al., 1994

- Cold gas clouds ( $H + H_2 + He$ )
- Merging OK

# Further research



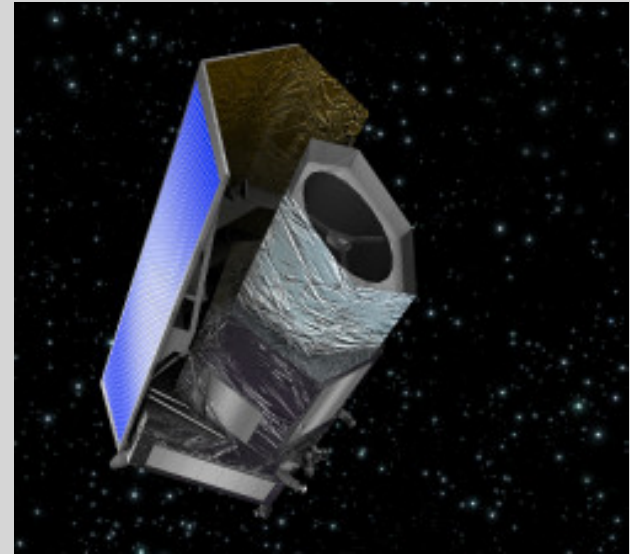
HST



# Further research



HST



Euclid

**Thank you !**