

# Le bol tibétain

D. Terwagne, J.W.M. Bush  
 GRASP, University of Liège, Belgium  
 Department of Mathematics, MIT, USA



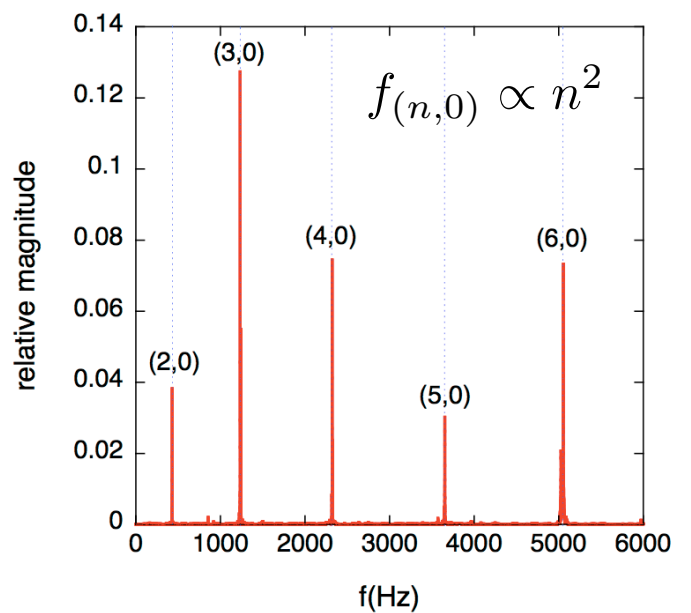
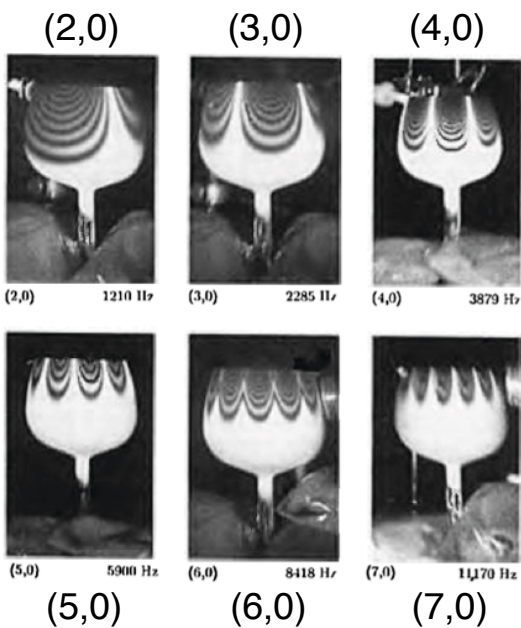
Le bol chinois  
 ou  
 Dragon Wash



Le bol tibétain

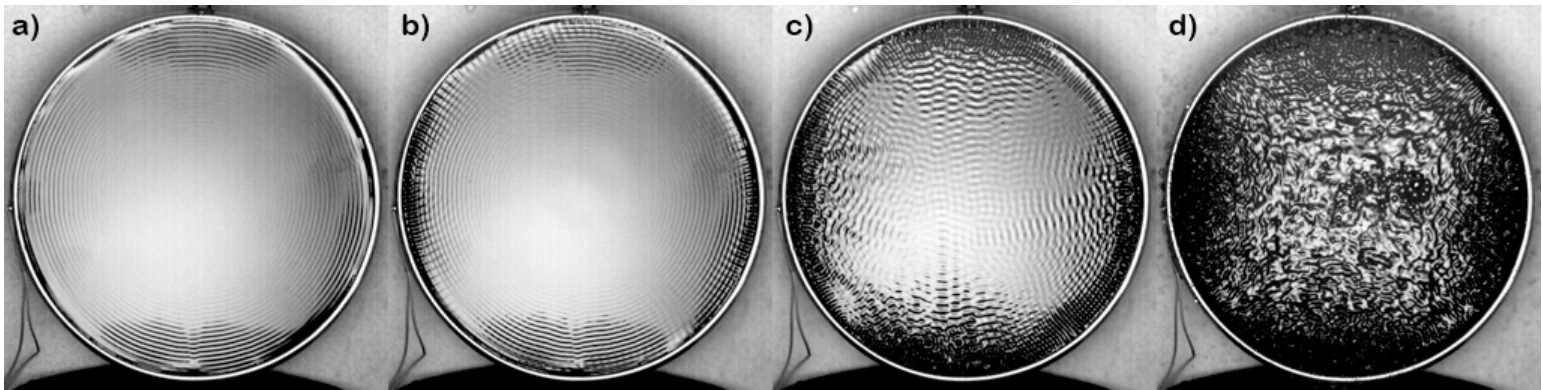


Le verre à vin

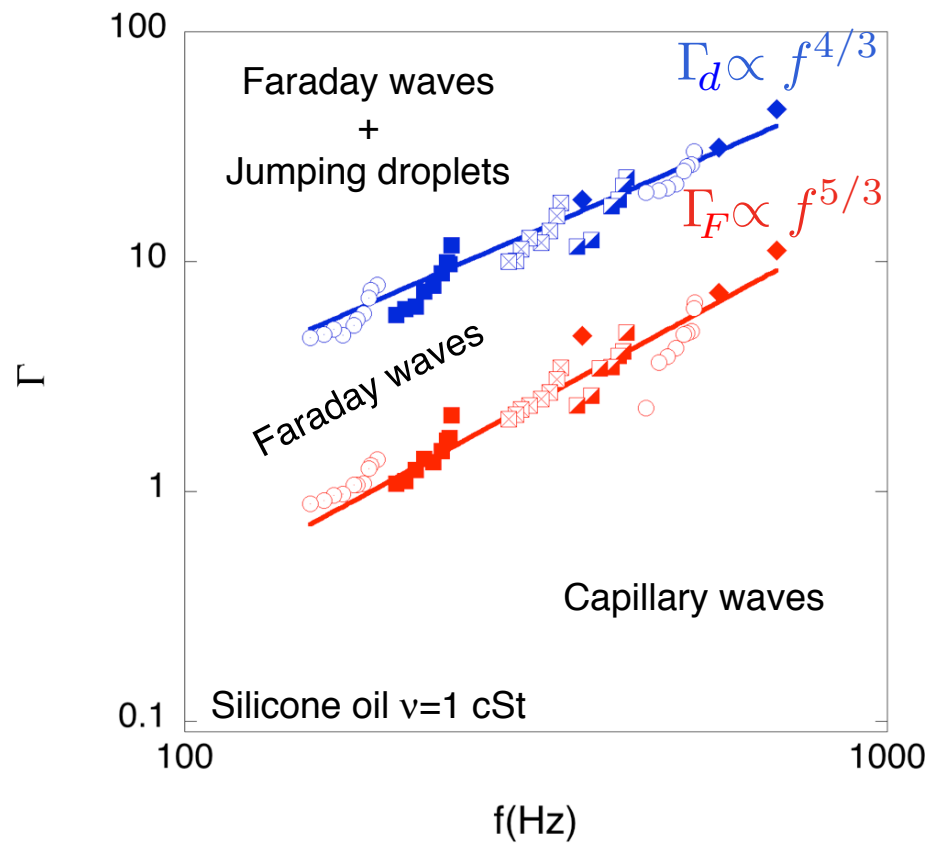
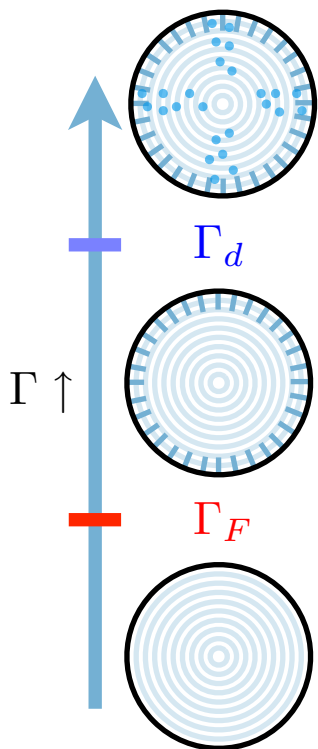
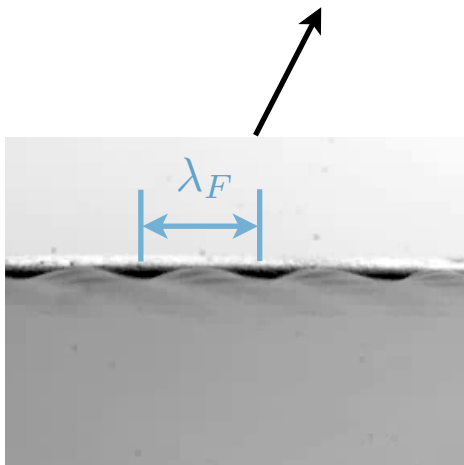


[Rossing, 1993]

# Le bol tibétain



$f = 188 \text{ Hz}$



# Le bol tibétain

