

Your article (# 7597), MS# AJP07-1004 to be published in American Journal of Pathology

=====

American Journal of Pathology

Dear Author,

The proofs for the above-referenced article are ready for your review. This email contains instructions on retrieving and returning your proofs and reprint order form. Please read the following information thoroughly before proceeding.

In order to retrieve your proofs, please refer to this URL address:

<http://rapidproof.cadmus.com/RapidProof/retrieval/index.jsp>

Login: your e-mail address (the account where this message was delivered)

Password: ----

The site contains 1 file, consisting of:

Page Proof instructions

Reprint Order form

A copy of your page proofs for your article (This proof contains 12 pages.)

Please note you will need to have Adobe Acrobat Reader software to read these files. This is free software and is available for user downloading at <http://www.adobe.com/products/acrobat/readstep.html>.

After printing the PDF file, please read the page proofs carefully and:

- 1) indicate changes or corrections in the margin of the page proofs;
- 2) answer all queries (footnotes A,B,C, etc.) on the last page of the PDF proof;
- 3) proofread any tables and equations carefully;
- 4) check that any Greek characters, such as gamma, delta, mu, etc., have translated correctly.

WITHIN 24 HOURS OF RECEIPT, please return the following to the address given below:

- 1) hardcopy original PDF set of page proofs,
- 2) for figures that require corrections, good quality hard copy figures (we CANNOT accept figures on disk at this stage),

Special Notes:

1. Author, please note which figures are NOT acceptable for publication (fill in figure numbers)_____. Please supply good quality hard copy (NOT electronic files) to be used for scanning when you return your page proofs.
2. For articles with color, please review your images as they appear on the PDF. If you have concerns about the quality of the figures, please contact me before returning your page proofs.
3. Per publisher policy, excessive delays by the authors in returning proofs may result in a publication delay of your article.

4. For questions concerning reprint and publication charges, please refer to the enclosed reprint order form or contact Jane Wolf at 800-407-9190, 410-819-3993, 410-820-9765(fax), or email at wolfj@cadmus.com.

If you have any problems or questions, please contact me. PLEASE ALWAYS INCLUDE YOUR ARTICLE NO. (7597) WITH ALL CORRESPONDENCE.

Sincerely
Jacquelyn Oldham
Journal Production Manager
Cadmus Professional Communications
8621 Robert Fulton Drive
Columbia, MD 21046
Tel: 410-691-6449
Fax: 410-684-2794
E-mail: oldhamj@cadmus.com

THE AMERICAN JOURNAL OF PATHOLOGY

About Your Manuscript or Disk

Attached please find the copyedited page proofs for your article, including author queries (requests for clarification or additional information). Please print out the attached pages and hand-mark any corrections, being sure to fully address any queries (either in the margins of the proof or on the query list).

How to Make Corrections to Proof

Please check proof for proper translation of Greek characters, math terms, and equations. **Please read and, if necessary, answer all queries. Write corrections directly on the page proof, in the margins.** Please do not make any other mark in the text except for a small caret or deletion mark. Do not draw lines from the correction in the margin to the text. Make all marks and notations directly on the page proof. Please use standard proofreading marks.

Corrections to Figures (Color and Black and White)

Check all figures for correct numbering, positioning, and cropping. Note questions about figure quality in the margin of the relevant page. Mark correction on proof and return new, corrected figures with page proofs. **Please return all black and white and color figures**, including new (corrected) figures, if necessary.

Whom to Contact

Copy editing: Jacquelyn Oldham, Phone: 410 691-6449; E-mail: oldhamj@cadmus.com.

Reprints and page charges: Reprint Department, Phone: 410 819 3993; Fax: 410 820 9765.

Returning Your Material

Please return printed and corrected page proofs and all figures within 48 hours (by overnight express mail, if possible) to Jacquelyn Oldham, Journal Production Manager, Cadmus Professional Communications, 8621 Robert Fulton Dr., Suite 100, Columbia, MD 21046. After marking all corrections to page proof, please copy and keep one set of proof for your records.

Please return the reprint/publication charge form whether or not you order reprints. Mail the form to: Cadmus Professional Communications Reprints, P.O. Box 751903, Charlotte, NC 28275-1903. The form must be returned by the 10th day of month preceding the month of issue.

Proofreader's Marks

To do this	Mark in text	Mark in margin
Take out character in middle of word	Your pr o of	⤴
Take out character at start or end of word	Your p roof	↵
Insert character in middle of word	Y r proof	⊂ u ⊂
Insert character at beginning of word	p roof	Y ⊂
Insert character at end of word	Your proo x	⊂ f #
Insert word	Your x proof	# new #
Insert space	Your x proof	#
Close up; no space	Your pro o f	⊂
Transpose words and letters	A[proof/gddol]	(tr)
Make lowercase	Your P roof	(lc)
Make capital	y our proof	(caps)
Make italic	Your <u>proof</u>	(ital)
Make bold	Your proof	(bf)
Make roman (not italic or bold)	Your <u>proof</u>	(rom)
Let it stand; OK as is	Your <u>proof</u>	(stet)
Start paragraph	read. Your	¶
No paragraph	Marked.) c Your	no ¶
Align	Three of the dogs	
Insert period	Your proof x	⊙
Insert comma	Your proof x	↵
Insert colon	Your proof x	:
Insert semicolon	Your proof x	;
Insert apostrophe	The man s shoe	↵
Insert quotation marks	Your p roof"	⊂ ⊂
Insert hyphen	A proof x marked page	/=/
Insert bracket	Your [proof x	⊂]
Insert parenthesis	Smith et al. p roof)	(⊂
Insert em-dash (—)	Your proof x	—
Insert en-dash (–)	Your proof x	–
Insert 1-em space	□ Your proof	□
Insert 2-em space	□□ Your proof	□□
Make >1 correction to a single line	Your x proof is c o mplete x	# / (tr) / o

American Journal of Pathology 2007

This is your reprint order form or pro forma invoice

(Please keep a copy of this document for your records.)

This reprint and publication charge order form must be returned to Cadmus Reprints with payment or a signed institutional purchase order by the 10th day of the month preceding the month of issue. For reprint questions, please contact Jane Wolf at 800-407-9190, 410-819-3993, 410-820-9765 (fax), or email at wolf.j@cadmus.com. It is the policy of Cadmus Reprints to issue one invoice per order. Please print clearly.

Author Name _____
Title of Article _____
Issue of Journal _____ Reprint # 3332111
Number of Pages _____ Manuscript # AJP07-1004
Color in Article? Yes / No (Please Circle)

Please include the journal name and reprint number or manuscript number on your purchase order or other correspondence.

Reprint Costs (Please see page 2 of 2 for reprint costs.)

Number of reprints ordered _____ \$ _____
Taxes _____ \$ _____

(Add appropriate sales tax for Virginia, Maryland, Pennsylvania, and the District of Columbia or Canadian GST to the reprints if your order is to be shipped to these locations.)

Add \$32 for each additional ship location \$ _____

Publication Fees (Please see page 2 of 2 for publication fees.)

Page charges: \$65 per page \$ _____
Color in journal* (enter amount quoted previously): \$ _____
Supplemental Data* (minimum \$50): \$ _____

*For exact cost, please refer to the Publication Charge Approval form sent to you previously by the Editorial Office.

Total Amount Due \$ _____

Ordering Details

Invoice Address

Name _____
Institution _____
Department _____
Street _____
City _____ State _____ Zip _____
Country _____
Phone _____ Fax _____
E-mail Address _____
Purchase Order No. _____

Enclosed:

Personal Check _____
Institutional Purchase Order _____
Credit Card Payment Details _____
Checks must be paid in U.S. dollars and drawn on a U.S. Bank.

Signature _____ Date _____

Signature is required. By signing this form, the author agrees to accept the responsibility for the payment of reprints and/or all charges described in this document.

Shipping Address (cannot ship to a P.O. Box.)

Name _____
Institution _____
Street _____
City _____ State _____ Zip _____
Country _____
Quantity _____ Fax _____
Phone: Day _____ Evening _____

Additional Shipping Address* (cannot ship to a P.O. Box)

Name _____
Institution _____
Street _____
City _____ State _____ Zip _____
Country _____
Quantity _____ Fax _____
Phone: Day _____ Evening _____

* Add \$32 for each additional shipping address

Credit Card Payment Details

Credit Card: ___ VISA ___ Am. Exp. ___ MasterCard
Card Number _____
Expiration Date _____

Please complete Invoice address as it appears on credit card statement

Name: _____
Address: _____

Signature _____

Cadmus will process credit cards and Cadmus Journal Services will appear on the credit card statement.

Please send your order form and purchase order or prepayment made payable to:

Cadmus Reprints
P.O. Box 751903
Charlotte, NC 28275-1903

Note: Do not send express packages to this location.

FEIN #: 541274108

2007 Black and White Reprint Prices

Domestic (USA only)					
# of Pages	100	200	300	400	500
1-8	\$383	\$458	\$533	\$608	\$683
9-16	\$458	\$533	\$608	\$683	\$758
17-32	\$558	\$633	\$708	\$783	\$858

International (includes Canada and Mexico)					
# of Pages	100	200	300	400	500
1-8	\$418	\$517	\$615	\$714	\$813
9-16	\$517	\$639	\$761	\$885	\$1,007
17-32	\$630	\$763	\$900	\$1,032	\$1,165

Minimum order is 100 copies.

Color in Reprints

There is no extra charge for color in reprints.

Publication Fees

Page Charges

Every unsolicited article will be charged a rate of \$65 per page for all pages in the article. Corresponding authors of published manuscripts who are current, due-paying members of ASIP at the time of acceptance will receive a full rebate of page charges, which will be applied to the invoice at the time of billing.

Articles arising from research in developing countries are eligible for waiver of publication charges if all authors are located in a qualifying country; however this waiver must have been applied for and approved at time of submission (for details, see <http://ajp.amjpathol.org/misc/waivernations.pdf>).

Otherwise, no page charges will be waived.

Articles Published with Color

If your article contains color illustrations, you were informed of the cost for this service by the Editorial Office of The American Journal of Pathology. Please state exact color charge on the reverse side and add to your payment or purchase order accordingly.

Supplemental Data Fee

If your article contains supplemental material to be published on the Journal website, you were informed of the cost for this service by the Editorial Office (minimum is \$50).

Shipping

Shipping costs are included in the reprint prices. Domestic orders are shipped via UPS Ground service. Foreign orders are shipped via an expedited air service. The shipping address printed on an institutional purchase order always supercedes.

This reprint and publication charge order form must be returned to Cadmus Reprints with payment or a signed institutional purchase order by the 10th day of the month preceding the month of issue.

Please return this form even if no reprints are ordered.

Multiple Shipments

Orders can be shipped to more than one location. Please be aware that it will cost \$32 for each additional location.

Delivery

Your order will be shipped within 2 weeks of the journal print date. Allow extra time for delivery.

Tax Due

Residents of Virginia, Maryland, Pennsylvania, and the District of Columbia are required to add the appropriate sales tax to each reprint order. For orders shipped to Canada, please add 6% Canadian GST unless exemption is claimed.

Ordering

Prepayment or a signed institutional purchase order is required to process your order. Please reference journal name and reprint number or manuscript number on your purchase order or other correspondence. You may use the reverse side of this form as a proforma invoice. Please return your order form and purchase order or prepayment to:

Cadmus Reprints
P.O. Box 751903
Charlotte, NC 28275-1903

*Note: Do not send express packages to this location.
FEIN #:541274108*

Please direct all inquiries to:

Jane Wolf
800-407-9190 (toll free number)
410-819-3993 (direct number)
410-820-9765 (FAX number)
WolfJ@cadmus.com

Transforming Growth Factor- β 1-Mediated Slug and Snail Transcription Factor Up-Regulation Reduces the Density of Langerhans Cells in Epithelial Metaplasia by Affecting E-Cadherin Expression

Michael Herfs,* Pascale Hubert,* Natalia Kholod,* Jean Hubert Caberg,* Christine Gilles,[†] Geert Berx,[‡] Pierre Savagner,[§] Jacques Boniver,* and Philippe Delvenne*

From the Department of Pathology* and the Laboratory of Tumour and Development Biology,[†] CRCE, University of Liege, Liege, Belgium; the Department for Molecular Biomedical Research,[‡] Unit of Molecular and Cellular Oncology, Ghent University, Ghent, Belgium; and the Centre de Recherche en Cancerologie,[§] CRLC Val d'Aurelle-Paul Lamarque, Montpellier, France

nodeficiency responsible for EpM tumorigenesis. (Am J Pathol 2008, 172:000-000; DOI: 10.2353/ajpath.2008.071004)

Epithelial metaplasia (EpM) is initially an adaptative process that can occur in various organs in response to persistent injury. This epithelial tissue remodeling can be incomplete (immature) or complete (mature) depending on the persistence or not of the native epithelium. Although EpM is frequently observed in many organs such as the uterine cervix, bronchial tract, lower esophagus, and stomach, the phenomenon remains poorly understood. The process is usually associated with inflammation or proliferation of cells, such as that observed during tissue regeneration, and is likely connected to a modified expression of one or several genes at the level of multipotent stem cell cells.^{1,2}

Epithelial metaplasia (EpM) is an acquired tissue abnormality resulting from the transformation of epithelium into another tissue with a different structure and function. This adaptative process is associated with an increased frequency of (pre)cancerous lesions. We propose that EpM is involved in cancer development by altering the expression of adhesion molecules important for cell-mediated antitumor immunity. Langerhans cells (LCs) are intraepithelial dendritic cells that initiate immune responses against viral or tumor antigens on both skin and mucosal surfaces. In the present study, we showed by immunohistology that the density of CD1a⁺ LCs is reduced in EpM of the uterine cervix compared with native squamous epithelium and that the low number of LCs observed in EpM correlates with the down-regulation of cell-surface E-cadherin. We also demonstrated that transforming growth factor- β 1 is not only overexpressed in metaplastic tissues but also reduces E-cadherin expression in keratinocytes *in vitro* by inducing the promoter activity of Slug and Snail transcription factors. Finally, we showed that *in vitro*-generated LCs adhere poorly to keratinocytes transfected with either Slug or Snail DNA. These data suggest that transforming growth factor- β 1 indirectly reduces antigen-presenting cell density in EpM by affecting E-cadherin expression, which might explain the increased susceptibility of abnormal tissue differentiation to the development of cancer by the establishment of local immu-

The metaplasia to dysplasia to cancer progression is frequently encountered,^{3,4} particularly in the uterine cervix where the substantial majority (87%) of (pre)cancerous lesions develop within a specific microenvironment, the transformation zone where a metaplastic process is observed.⁵ This implies that exogenous or endogenous factors specific to the anatomical milieu of the transformation zone may be conducive to oncogenic human papillomavirus (HPV) infection and cancer development. In a previous report, we proposed that a side effect of EpM is a deregulated production of immune factors important for the antitumor/antiviral immune response.⁶ Accordingly, epithelial cells can influence immune reactions in mucosal surfaces through the production of cytokines and/or chemokines or via cell-cell contact.⁷ For example,

Supported by the Marshall Program of the Walloon Region (Neoangio no. 616476), the Belgian Fund for Medical Scientific Research, and the Centre Anti-Cancereux près l'Université de Liège.

M.H. and P.H. contributed equally to this study.

Accepted for publication January 28, 2008.

P.D. is a senior research associate and M.H. is a research fellow of the Belgian National Fund for Scientific Research.

Address reprint requests to Michael Herfs, Department of Pathology B35, CHU Sart Tilman, 4000 Liege, Belgium. E-mail: m.herfs@student.ulg.ac.be.

the intraepithelial expression of adhesion molecules, necessary to maintain a balanced turnover of immunocompetent cells, is probably influenced by the epithelial differentiation, which is altered in metaplastic areas.

The squamous epithelium is composed not only of keratinocytes but also of a type of immature dendritic cells (DCs), the Langerhans cells (LCs), which are important for the immunosurveillance of cutaneous or mucosal surfaces. Indeed, within the last several years, the importance of DC/LC intratumor infiltration has been emphasized. In particular, in the uterine cervix, the regression of HPV-related lesions has been shown to be associated with an increased intraepithelial infiltration of DCs/LCs.⁸ Several studies indicate that alterations in antigen presentation might occur in metaplasia. For example, previous works have demonstrated that metaplastic areas are associated with a lower density of LCs.^{9,10} Besides the communication of epithelial and immune cells by soluble factors, there also exist important cell-cell interactions. For example, the protein E-cadherin, which is critical for intercellular adhesiveness and maintenance of normal epithelial tissue architecture, is also involved in the homophilic and heterotypic interactions between epithelial cells and diverse cell types of the immune response, including LCs¹¹ and intraepithelial T lymphocytes (via $\alpha E\beta 7$ integrin).¹² Furthermore, it is well known that the loss of E-cadherin expression is associated with the malignant transformation of metaplastic areas,¹³⁻¹⁵ metastatic dissemination, and unfavorable tumor prognosis. The mechanisms involved in the regulation of E-cadherin expression are either the hypermethylation of the CDH1 (E-cadherin) gene^{16,17} or the activity of transcription factors, such as Snail or Slug, previously described as strong repressors of E-cadherin expression.¹⁸⁻²¹ These zinc-finger transcription factors bind to E-boxes in the CDH1 promoter and their expression has been correlated to invasiveness of several human tumors derived from epithelial tissues.²²⁻²⁵ The expression of Snail and Slug factors can be particularly induced by transforming growth factor- $\beta 1$ (TGF- $\beta 1$),²⁶⁻²⁸ which is highly expressed in several human pathogenic processes such as fibrosis, inflammation, and cancer development.^{29,30}

In this study, we postulated that inflammatory or immunomodulatory mediators, such as TGF- $\beta 1$, could contribute to the malignant transformation of EpM by negatively interfering with E-cadherin expression and intraepithelial adhesion of antigen-presenting cells. We showed that the reduced density of intraepithelial LCs in areas of mature and immature EpM is correlated with a lower expression of E-cadherin and that TGF- $\beta 1$ inhibits E-cadherin expression in keratinocytes by inducing the activity of Slug and Snail promoters.

Materials and Methods

Cervical Biopsy Specimens

Fifty-one paraffin-embedded cervical specimens from women who underwent total hysterectomy for noncervical benign uterine disease were retrieved from the Tumor

Bank of the University of Liege. The mean age was 41.2 years (range, 35 to 47 years) and only four patients were menopausal. These tissue samples included both normal exocervical epithelium and areas of EpM (mature and/or immature). Forty frozen cervical biopsies taken from nonmenopausal women were also selected and contained either exocervical tissues,¹² mature metaplasia,¹⁴ or immature metaplasia.¹⁴ DNA was prepared from all cervical specimens with the QIAamp DNA mini kit (Qiagen, Valencia, CA) and tested, by PCR, for the presence of HPV DNA sequences using previously described protocols³¹ and consensus primers (GP5⁺/GP6).^{32,33} The protocol was approved by the Ethics Committee of the University Hospital of Liege.

Cell Culture

Human skin keratinocytes (HaCaTs) were grown in a 3:1 mixture of Dulbecco's modified Eagle's medium and Ham's F12 medium containing 10% fetal calf serum (Gibco, Invitrogen Corp., Carlsbad, CA) and supplied with 1% nonessential amino acid (Gibco) and 1% sodium pyruvate (Gibco). The cells were incubated at 37°C in a humidified CO₂ atmosphere until a 50 to 60% confluence was reached. For some experiments, HaCaTs were cultivated in a serum deprivation medium (0.2% fetal calf serum) for 24 hours before stimulation with 10 ng/ml of TGF- $\beta 1$ (Prepro Tech, Rocky Hill, NJ).³⁴

Immunostaining

Serial sections of cervical biopsy specimens underwent immunostaining using antibodies directed against E-cadherin (clone HECD-1; Zymed, San Francisco, CA), CD1a (clone MTB1; Novocastra, Newcastle, UK), involucrin (clone SY5; Novocastra), TGF- $\beta 1$ (clone TB21; Santa Cruz Biotechnology, Santa Cruz, CA), Snail (clone E-18; Santa Cruz Biotechnology), and Slug (clone D-19; Santa Cruz Biotechnology). Anti-E-cadherin, CD1a, involucrin, and TGF- $\beta 1$ immunostaining was performed on paraffin sections whereas anti-Snail and Slug antibodies were used on frozen tissues. Sections were incubated with the primary antibodies for 1 hour at room temperature (E-cadherin, CD1a, involucrin, TGF- $\beta 1$) or overnight at 4°C (Snail, Slug). The revelation was performed with the Envision kit (DAKO, Glostrup, Denmark) (TGF- $\beta 1$), with the peroxidase LSAB2 system (DAKO) (E-cadherin, CD1a, involucrin) or with a conjugated anti-goat secondary antibody (Alexa Fluor 488, Invitrogen) (Slug, Snail), according to the supplier's recommendations.

For the immunostaining of cell monolayers, the cells were grown on glass slides and treated as previously indicated. The slides were quickly washed with phosphate-buffered saline (PBS) followed by a fixation in 4% paraformaldehyde for 20 minutes. After incubation in 100% cold methanol for 5 minutes, the slides were incubated with a fluorescein isothiocyanate-conjugated anti-E-cadherin primary antibody (clone 36; BD Transduction Laboratories, Franklin Lakes, NJ). The nuclei were stained with 4,6-diamidino-2-phenylindole (DAPI). Cells were ob-

served at timely intervals for 72 hours and pictures were obtained using an epifluorescence microscope (Carl Zeiss Inc., Oberkochen, Germany).

Immunostaining Assessment

The E-cadherin immunostaining was evaluated, in hysterectomy specimens, by using a semiquantitative score of the intensity and extent of the staining according to an arbitrary scale. For staining intensity, 0 represented samples in which membrane E-cadherin expression was undetectable, whereas 1, 2, and 3 denoted samples with, respectively, a low, moderate, and strong staining. For staining extent, 0, 1, 2, and 3 represented samples in which E-cadherin expression was detectable, respectively, in <5%, 6 to 25%, 26 to 75%, and >75% of the epithelium. The same staining extent evaluation was used to assess Slug and Snail immunoreactivity. To provide a global score for each case, the results obtained with the two scales were multiplied, yielding a single scale with steps of 0 to 9.^{35,36} This scoring system was also used to evaluate the TGF- β 1 immunostaining. A similar scoring system was used for CD1a evaluation, with the modification that the staining intensity was replaced by the density of CD1a⁺ LCs [low (1), moderate (2), and high (3)]. This method was validated using a computerized image analysis system (CAS; Becton Dickinson, Erembodegen, Belgium) following a method described previously.³⁷

Western Blotting Analysis

Cells were lysed in a buffer containing 50 mmol/L Tris, pH 7.5, 300 mmol/L NaCl, 1 mmol/L ethylenediaminetetraacetic acid, 1% Igepal CA-630 (Sigma, St. Louis, MO), 1 mmol/L phenylmethyl sulfonyl fluoride (Sigma), and protease inhibitors (Roche, Bale, Switzerland). After quantification (BCA protein assay; Pierce, Rockford, IL), 25 μ g of proteins were separated by electrophoresis on 4 to 12% NuPAGE polyacrylamide gels (Invitrogen) and transferred onto polyvinylidene difluoride membranes. The membranes were subsequently blocked with 5% skim milk for 30 minutes and incubated overnight at 4°C with anti- β -actin (Sigma-Aldrich, St. Louis, MO), anti-E-cadherin (BD Transduction Laboratories), anti-Snail (Santa Cruz Biotechnology), and anti-Slug (Santa Cruz Biotechnology) antibodies. The membranes were then washed with TBS-T and incubated with appropriated secondary antibodies. After washings, the protein bands were detected using an enhanced chemiluminescence system (ECL Plus; Amersham Biosciences, Piscataway, NJ).

Semiquantitative Reverse Transcriptase (RT)-PCR Analysis

One μ g of total RNA extracted from cell cultures (RNeasy mini kit, Qiagen) and quantified with a ND-1000 spectrophotometer (NanoDrop, Wilmington, DE) was reverse-transcribed using Superscript II reverse transcriptase (Invitrogen) according to the manufacturer's instructions.

The reactions were performed at 42°C for 50 minutes, followed by inactivation of the enzyme at 75°C for 15 minutes. The cDNA was stored at -20°C. RT-PCR reactions were performed using the following primer sequences: E-cadherin: forward: 5'-TATTCCTCCCATCAGCTGCC-3'; reverse: 5'-CAATGCGTTCTCTATCCAGAGG-3'; Snail: forward: 5'-AATCGGAAGCCTAACTACAGCGAG-3'; reverse: 5'-CCTTCCCCTGTCCTCATCTGACA-3'; Slug: forward: 5'-CCTTCTGGTCAAGAAGCATTTC-3'; reverse: 5'-AGGCTCACATATTCCTTGTCACAG-3'; HPRT: forward: 5'-TTGGATATAAGCCAGACTTTGTTG-3'; reverse: 5'-AGATGT-TCCAACTCAACTTGAA-3'. Samples were run on 1.8% agarose gels containing ethidium bromide and visualized with an UV transilluminator. mRNA levels were determined by densitometric analysis (Quantity One Software; Bio-Rad, Hercules, CA). HPRT was used as an internal control and the mRNA levels were normalized to this housekeeping gene.

Methylation-Specific PCR

DNA methylation status of CpG island at the 5' end of CDH1 (E-cadherin) gene was determined by methylation-specific PCR. This method is based on cleavage by the methylation-sensitive endonuclease *HpaII* and subsequently amplification of a gene fragment by PCR using primers specific to sequences flanking the restrictive enzyme cut sites. One hundred ng of DNA extracted from frozen tissues sections were cleaved overnight at 37°C using the restriction enzyme *HpaII* (10 U) (Fermentas, Burlington, Canada). After a thermal treatment to distort the enzyme, PCR was then performed using the following primer pairs: forward: 5'-GGGGGGCGGTGCTCCGG-3'; reverse: 5'-ATGGCTGGCCGGGACGC-3'. These primers allowed amplification of a part of CDH1 promoter containing six potentially methylated CpG islands. Positive and negative controls were performed using genomic DNA lacking enzymatic digestion and DNA treated with methylation-insensitive endonuclease *MspI*, respectively.

siRNA Transfection and Gene Silencing

The day before transfection, 1.5×10^5 HaCaT cells per well of a six-well plate were seeded in 3 ml of appropriate growth medium. For each transfection, 50 ng of small interfering RNA (siRNA) and 3 μ l of Transfectin (Bio-Rad) were diluted in 1 ml of OptiMem (Invitrogen). The mixture was then incubated at room temperature for 20 minutes to allow the formation of siRNA-liposome complexes. Growth medium was aspirated from the cells and the transfecting solution was added drop by drop. The cells were incubated with the complexes for 4 hours at 37°C in a CO₂ incubator. After incubation, 1 ml of growth medium (containing 20% of serum) was added without removing the transfection mixture. Twenty-four hours after transfection, the medium was replaced with normal growth medium. High-efficiency siRNA transfections were obtained in growing HaCaT cells using this protocol (>90% cells). The efficiency of transfection in RNA interfering experiments was monitored by using labeled 3'ATTO 647N-

negative control siRNA (Eurogentec, Seraing, Belgium). The anti-human Snail and Slug siRNAs used were, respectively, designed by Jorda and colleagues³⁸ and by Tripathi and colleagues.³⁹

Plasmid Transfection and Heterotypic Cell Adhesion Assay

pcDNA3.1 Zeo expression vector (Invitrogen) containing full-length human Slug sequence and pEF6/Myc-His version A expression vector (Invitrogen) containing human Snail sequence were transfected into HaCaT cells plated in two-well Lab-Tek chamber slide (Nunc, Roskilde, Denmark) with 1.5 μ l of Transfectin (Bio-Rad). The transfection protocol used was similar to that previously described for siRNA. Forty-eight hours after the start of transfection, 10×10^5 LCs generated as previously described⁴⁰ and stained with the lipophilic fluorescent marker CM-DIL (Molecular Probes, Invitrogen) were plated in each well. After 1 day of co-culture, the slides were washed with PBS and fixed in 4% paraformaldehyde for 20 minutes. The nuclei were revealed with DAPI and finally, the number of LCs observed by field (magnification, $\times 200$) was determined by using a epifluorescence microscope (Carl Zeiss Inc.) and by counting cells in 10 microscopic fields.

Statistical Analysis

Statistical analysis was performed with the Instat 3 software (Graph-Pad Software, San Diego, CA). The Spearman correlation test was used to establish the correlation between E-cadherin expression and LC density in the different histological tissues. The Kruskal-Wallis test was used to assess the difference between E-cadherin expression and LC density in the cervical specimens and to estimate the difference of LC number by microscopical field in the heterotypic cell adhesion assay. Correlations and differences were considered as statistically significant when *P* values were less than 0.05.

Results

The Density of CD1a-Positive LCs Is Correlated in Vivo with the Expression of Cell-Surface E-Cadherin

E-cadherin expression and CD1a⁺ cells were studied in 51 hysterectomy specimens. The exocervical squamous epithelium was tested as controls. Twenty-three samples show mature EpM and 39 immature EpM. Among the 23 mature EpM cases, 11 were adjacent to immature EpM. All these tissue specimens were negative for HPV. The immunostaining results are shown in Figure 1. Squamous exocervical epithelium (Figure 1A) as well as mature EpM (Figure 1B) showed strongly positive involucrin immunoreactivity whereas no or a low expression of this protein was found in immature EpM (Figure 1C). This marker for epithelial differentiation was therefore used to easily distinguish between mature and immature EpM. In the nor-

mal exocervical epithelium, CD1a⁺ cells were intermingled with keratinocytes in the (para)basal and intermediate cell layers (Figure 1D). In contrast, the density of these cells was significantly lower in areas of mature (Figure 1E) and immature (Figure 1F) EpM than in the squamous exocervical epithelium. This latter one was strongly positive for E-cadherin (Figure 1G). Positive cells were observed mostly in (para)basal and intermediate cell layers. In contrast to exocervical epithelium, all of the mature (Figure 1H) and immature (Figure 1I) EpM showed a lower anti-E-cadherin cell-surface immunoreactivity. However, in immature EpM, the glandular epithelium that persists at the surface of metaplastic keratinocytes showed a positive E-cadherin staining as the normal epithelium of the endocervix (data not shown). The density of CD1a⁺ cells and the E-cadherin immunoreactivity were statistically higher in the normal exocervical epithelium than in mature and immature EpM (*P* < 0.0001), as demonstrated by the semiquantitative evaluation of E-cadherin (Figure 1J) and CD1a (Figure 1K) intraepithelial expression. Moreover, a Spearman correlation between CD1a and E-cadherin scores was also observed in normal exocervical epithelium (Spearman, *r* = 0.3973; *P* value = 0.005), in mature (Spearman, *r* = 0.4538; *P* value = 0.0296), and in immature (Spearman, *r* = 0.4448; *P* value = 0.0046) EpM.

The Majority of Metaplastic and Exocervical Biopsies Are Unmethylated for CDH1 Gene

To determine the mechanism(s) responsible for the decreased expression of E-cadherin in the EpM, we first analyzed the methylation status of a panel of CpG islands associated with the promoter of E-cadherin (CDH1) gene by a restriction enzyme PCR. After a treatment with the methylation-sensitive endonuclease *Hpa*II, the methylation level of CDH1 gene was established by PCR. DNA is not cleaved when enzymatic recognition sites are methylated and can be amplified by PCR. In contrast, when the target DNA sequence is unmethylated, its cleavage by *Hpa*II prevents the DNA amplification by PCR. Untreated DNA and DNA treated with methylation-insensitive endonuclease *Msp*I were the positive and negative controls, respectively (Figure 2A). With this technique, methylated CDH1 gene was found in 0% (0 of 12) of exocervical biopsies and in 14.3% (2 of 14) of specimens containing mature or immature EpM (Figure 2B). No statistical difference in the methylation level of CDH1 gene was observed between exocervical and metaplastic specimens.

TGF- β 1, Slug, and Snail Transcription Factors Are Overexpressed in Areas of Mature and Immature EpM

Next, we investigated the possible role of TGF- β 1 and Slug/Snail transcription factors in the down-regulation of E-cadherin in EpM. By using immunohistochemistry in cervical biopsies, we showed that, compared to the exocervical epithelium (Figure 3A), EpM expressed signifi-

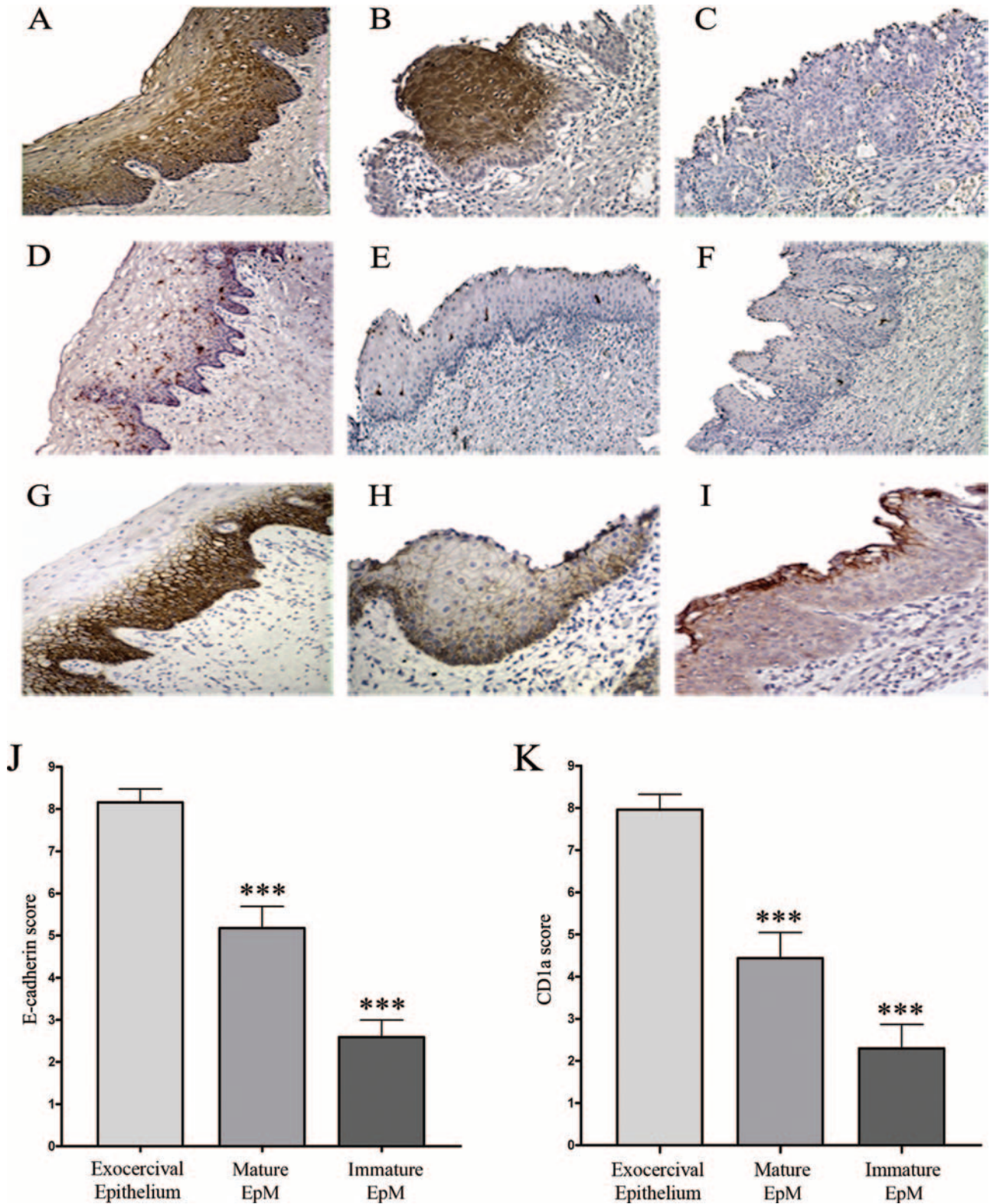


Figure 1. Correlation between the density of CD1a⁺ LCs and the E-cadherin expression in squamous exocervical epithelium and in EpM (mature and immature). **A–C:** Invulcrin expression in normal squamous epithelium and in areas of mature and immature EpM. Compared with exocervical epithelium (**A**) and mature EpM (**B**), the involucrin immunoreactivity is strongly decreased in immature EpM (**C**). **D–F:** Density of CD1a⁺ cells in normal squamous epithelium and in EpM. **D:** The normal squamous epithelium shows a high density of CD1a⁺ cells in the basal and suprabasal cell layers. Mature (**E**) and immature (**F**) EpM are infiltrated by a low density of CD1a⁺ cells. **G–I:** E-cadherin expression in normal squamous epithelium and in EpM. **G:** The normal squamous epithelium shows typical cell-surface E-cadherin staining of basal and intermediate keratinocytes. The E-cadherin immunoreactivity was intermediate and low in mature (**H**) and immature (**I**) EpM, respectively. **J and K:** Semiquantitative evaluation of E-cadherin and CD1a expression, respectively, in normal exocervix ($n = 51$), mature ($n = 23$), and immature ($n = 39$) areas of EpM. **Asterisks** indicate statistically significant differences ($***P < 0.001$). Original magnifications: $\times 100$ (**A, D–G**); $\times 200$ (**B, C, H, I**).

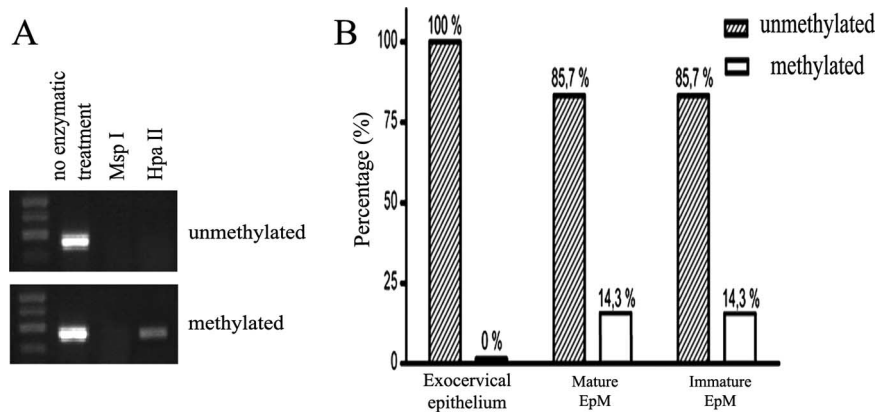


Figure 2. The methylation status of *CDH1* (E-cadherin) gene in exocervical and metaplastic tissues. **A:** Representative examples of PCR results for methylated and unmethylated *CDH1* gene. After a treatment with the restriction enzyme *HpaII*, a PCR product is visualized under UV illumination for methylated tissue samples. Genomic DNA without enzyme digestion and DNA treated with methylation-insensitive endonuclease *MspI* represent positive and negative control, respectively. **B:** Methylation analysis of *CDH1* gene in cervical tissues with exocervical epithelium ($n = 12$), mature ($n = 14$), or immature EpM ($n = 14$).

cantly more TGF- β 1 ($P < 0.001$; Figure 3, B and C). Furthermore, TGF- β 1 staining was higher in immature (Figure 3C) than in mature (Figure 3B) EpM. Slug (Figure 3, E and F) and Snail (Figure 3, H and I) transcription factors were found to be highly expressed in mature and immature EpM. The staining was observed both in the cytoplasm and the nucleus of (para)basal and apical metaplastic cells. In contrast, the immunoreactivity was only detected in the upper epithelial cell layers (Figure 3, D and G), and the expression of these proteins was significantly lower in the exocervical epithelium than in EpM ($P < 0.001$; Figure 3, J–L).

TGF- β 1 Induces Slug and Snail Expression and Represses E-Cadherin in Keratinocytes

To determine *in vitro* the potential implication of TGF- β 1 in the E-cadherin down-regulation in metaplastic keratinocytes, HaCaTs were treated with TGF- β 1 (10 ng/ml) for 24, 48, and 72 hours. Immunostaining demonstrated that E-cadherin was weakly detected in the cell junctions after 48 and 72 hours of incubation with TGF- β 1 (Figure 4A). This decreased expression of E-cadherin in the presence of TGF- β 1 was confirmed by Western blot (Figure 4B) and RT-PCR (Figure 4C). In addition, we found that TGF- β 1 strongly increased the Slug transcription factor expression (Figure 4C). The maximum RNA level was obtained 12 hours after exposure to TGF- β 1 and was followed by a steady decline in expression. However, the expression of Slug remained greater than the basal level at least up to 72 hours of TGF- β 1 treatment. In contrast, the expression of Snail transcription factor was weakly induced by TGF- β 1. Similar results were obtained at the protein level (Figure 4B).

Slug and Snail Silencing Attenuates the Down-Regulation of E-Cadherin Caused by TGF- β 1 in Keratinocytes

We next determined whether Slug and/or Snail transcription factors are required for the decreased expression of E-cadherin induced by TGF- β 1 by examining the effects of Slug and Snail silencing on TGF- β 1-induced down-regulation of E-cadherin in keratinocytes. Gene silencing

efficiency was analyzed by Western blot (Figure 5A) and RT-PCR (Figure 5C). Immunocytology (Figure 5B) and RT-PCR (Figure 5D) showed that the down-regulation of E-cadherin induced by TGF- β 1 was partially suppressed in Slug- and Snail-silenced HaCaTs. RT-PCR analysis showed that after 72 hours of TGF- β 1 treatment, E-cadherin mRNA was present in HaCaT-control siRNA at a level corresponding to 49% of that detected in untreated cells, compared to 77% ($P < 0.001$) and 56% ($P < 0.05$) in HaCaTs transfected, respectively, with Slug and Snail siRNA. No synergistic effect was observed when keratinocytes were transfected with siRNAs against both Slug and Snail (data not shown). These data suggest that Slug and, at a lower extent, Snail transcription factors are, at least in part, necessary for the down-regulation of E-cadherin induced by TGF- β 1 in keratinocytes.

The Interactions between LCs and Keratinocytes Are Affected by the Down-Regulation of E-Cadherin Caused by Slug and Snail Transcription Factors

We finally investigated whether the reduction of E-cadherin expression caused by Slug and Snail transcription factors affects the adhesion of LCs to keratinocytes. We transiently transfected keratinocytes with Snail and Slug expression vectors and showed that Slug and Snail proteins levels were higher in transfected cells (Figure 6A). RT-PCR analysis showed similar results (data not shown). In addition, we confirmed by immunofluorescence (Figure 6B) and Western blot (Figure 6A) the down-regulation of E-cadherin induced by these two transcription factors. Forty-eight hours after transfection, a heterotypic cell adhesion assay was performed by using fluorescent labeled LCs that were incubated with keratinocytes transfected with the different vectors and we demonstrated that LCs poorly adhere to Slug- and Snail-transfected keratinocytes compared to cells transfected with empty vectors (Figure 6C). Similar results were obtained when the expression of E-cadherin in keratinocytes was reduced by a pretreatment with TGF- β 1 for 72 hours (data not shown).

Discussion

Although the precise mechanisms underlying induction of EpM are still obscure, it has been known for many

years that specific metaplastic sites are at higher risk of developing cancer compared with the adjacent native epithelium.^{5,41,42} The increased risk of malignant trans-

formation within the metaplastic epithelium could result from the accumulation of somatic gene mutations directly caused by factors responsible for EpM.^{4,43} However,

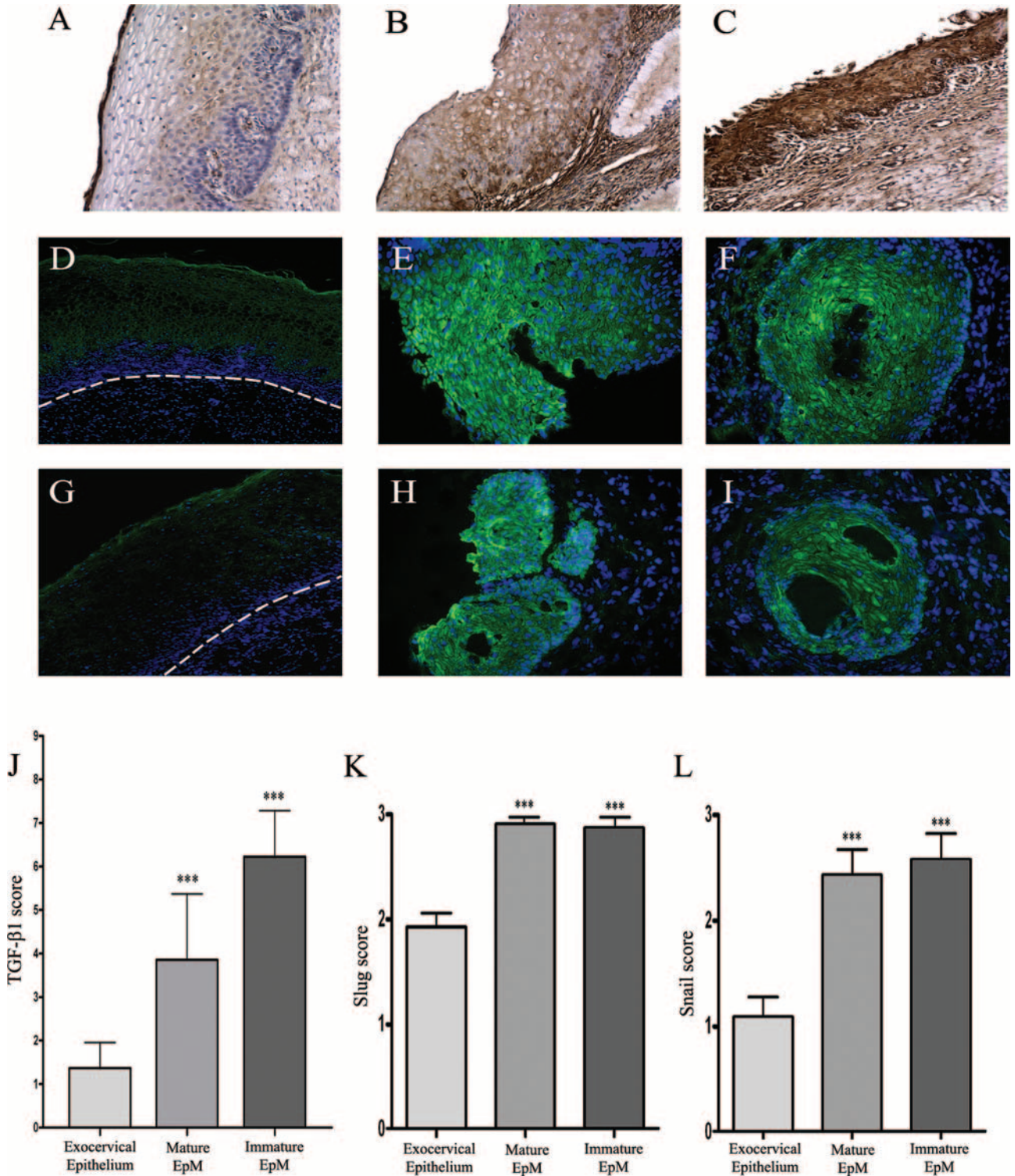


Figure 3. TGF-β1 (A–C), Slug (D–F), and Snail (G–I) immunostaining in cervical biopsy specimens. The exocervical epithelium shows a low TGF-β1 staining (A) whereas mature (B) and immature (C) EpM demonstrate, respectively, an intermediate and high expression of TGF-β1. The normal squamous exocervical epithelium shows a medium expression of Slug (D) and a low expression of Snail (G) transcription factors only in upper cell layers. The dashed line delineates the epithelium from the stroma. In contrast, mature (E and H) and immature (F and I) EpM demonstrates a strong Slug (E and F) and Snail (H and I) immunoreactivity. **J:** Semiquantitative evaluation of TGF-β1 expression, respectively, in normal exocervix ($n = 51$), mature ($n = 23$), and immature ($n = 39$) areas of EpM. Semiquantitative evaluation of Slug (**K**) and Snail (**L**) expression, respectively, in normal exocervix ($n = 12$), mature ($n = 14$), and immature ($n = 14$) areas of EpM. **Asterisks** indicate statistically significant differences ($***P < 0.001$). Original magnifications: $\times 100$ (A–C, D, G); $\times 200$ (E, F, H, I).

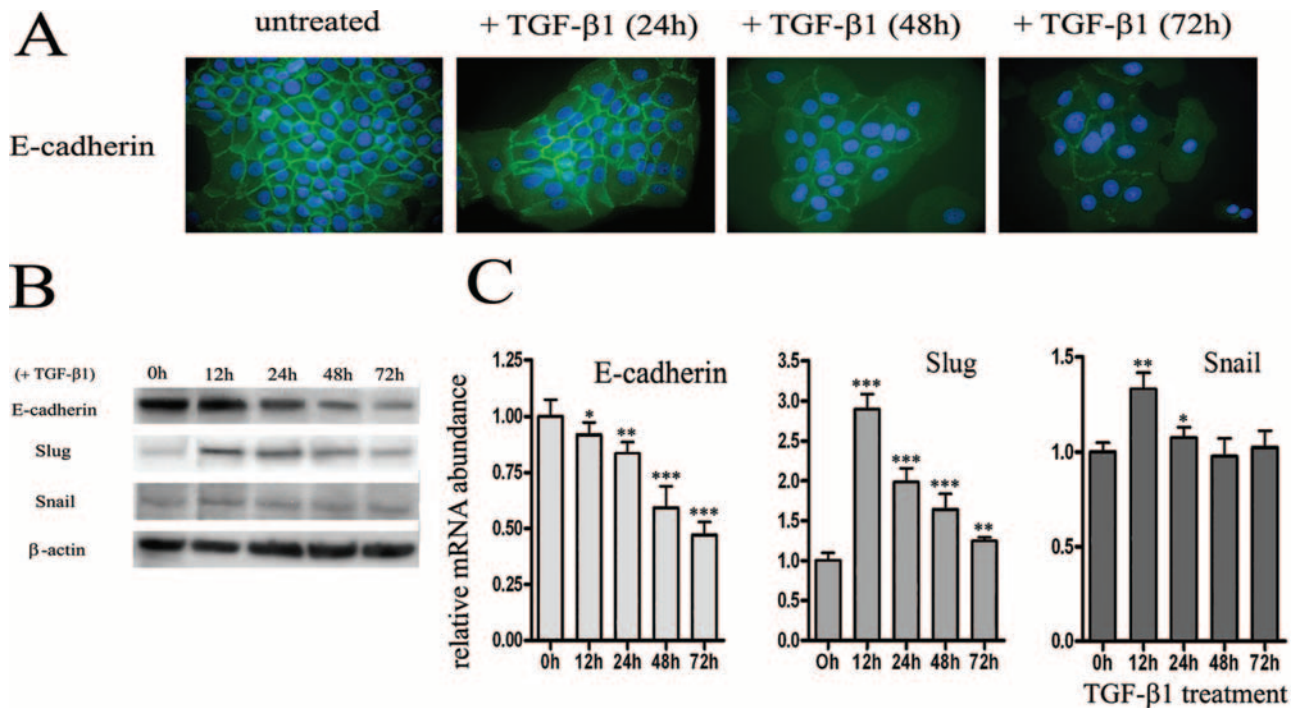


Figure 4. TGF- β 1 inhibits E-cadherin and induces Slug and Snail expression in keratinocytes. **A:** The immunofluorescence demonstrates a diminished expression of E-cadherin (green) at the cell membrane after incubation with TGF- β 1 during 48 hours. The nuclei were stained with DAPI (blue). Western blot (**B**) and RT-PCR (**C**) confirm the down-regulation of E-cadherin and show the increased expression of Slug and, at a lower level, of Snail transcription factors after TGF- β 1 treatment. Results are representative of three independent experiments performed in duplicates. The mean \pm SD is shown. **Asterisks** indicate statistically significant differences (* P < 0.05; ** P < 0.01; *** P < 0.001). Original magnifications, $\times 630$.

intrinsic immune features altered in the metaplastic epithelium could also contribute to cancer development by preventing an efficient antitumor immune response.⁶ This effect could be mediated by a differential expression of soluble and/or membrane-associated factors. Consistent with this hypothesis, an altered expression of several soluble factors such as TGF- β , tumor necrosis factor (TNF)- α , and interleukin (IL)-10 has been observed in esophageal and cervical EpM.^{10,44,45} Similarly, the expression of E-cadherin, which is necessary for the retention of antigen-presenting cells in epithelial tissues,³⁶ is decreased in gastric and esophageal areas of intestinal metaplasia compared to normal epithelium.^{14,46}

LCs are antigen-presenting cells that play a key role in the immunosurveillance of epidermis and mucosal surfaces. LCs are required for the initiation of cellular immune responses to pathogens and the infiltration of tumors by antigen-presenting cells has been correlated with a better prognosis.⁴⁷⁻⁴⁹ In the present study, we demonstrated that the immunosurveillance represented by the density of CD1a⁺ LCs is decreased both in mature and immature cervical EpM compared with the normal squamous epithelium and is correlated with a lower intraepithelial expression of E-cadherin. These findings are in agreement with previous works reporting a reduced LC density in the cervical transformation zone.^{9,10} The observed correlation between E-cadherin expression on keratinocytes and LC density in normal and metaplastic epithelium suggests an important role of the heterotypic E-cadherin-mediated interaction between keratinocytes and LCs for the LC retention in the squamous epithelium. A similar correlation has

been previously performed in HPV16-infected skin in which E6 viral oncoprotein inhibits E-cadherin expression.⁵⁰ However, in contrast to cervical (pre)neoplastic lesions that are associated with HPV infection,⁵¹⁻⁵³ the biopsies selected in this study were HPV-negative, suggesting that E6 viral oncoprotein is not involved in the down-regulation of E-cadherin in HPV-negative EpM.

To determine the mechanism by which E-cadherin expression is modulated in EpM, the methylation level of CDH1 (E-cadherin) promoter was studied by using a methylation-specific PCR. We found that the majority of analyzed cervical metaplastic samples are unmethylated. As already shown in intestinal metaplasia areas in the lower esophagus⁵⁴ and the stomach,⁵⁵ the frequency of hypermethylation was less than 40%, suggesting that other mechanisms are responsible for the down-regulation of E-cadherin observed in every EpM.

Slug and Snail are transcription factors that negatively regulate the expression of E-cadherin.¹⁸⁻²¹ In the present study, we found, by immunostaining, that these proteins are strongly expressed in the entire thickness of EpM. In contrast, these two proteins were only weakly detected in the upper epithelial cell layers of the normal exocervical epithelium and their expression was inversely correlated with that of E-cadherin that was mainly present in the (para)basal and intermediate cells of the squamous epithelium. As previously observed in pancreatic and esophageal cancer cells,^{56,57} Slug and Snail were observed in the cytoplasm as well as in the nucleus of keratinocytes. Interestingly, TGF- β 1 was also expressed, at higher levels, in EpM compared with the adjacent native epithelium. TGF- β 1

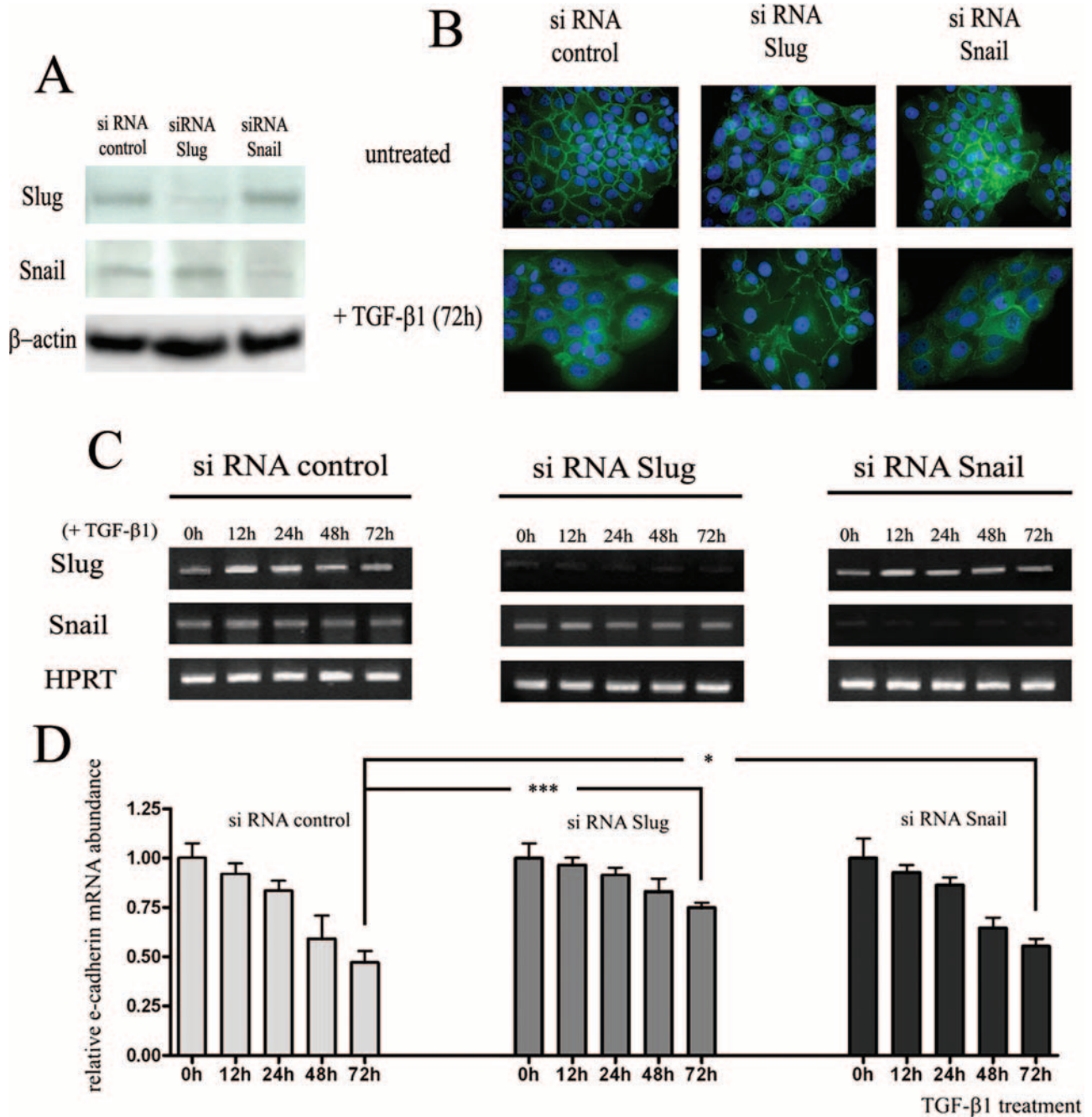


Figure 5. The decrease in E-cadherin expression caused by TGF- β 1 is partially attenuated by Slug and Snail silencing. **A:** Efficiency of Slug and Snail silencing was demonstrated by Western blot 48 hours after siRNA transfection. **B:** Immunofluorescence analysis and subcellular localization of E-cadherin (green) in HaCaT-siRNA control, in HaCaT-siRNA Slug and in HaCaT-siRNA Snail stimulated or not with TGF- β 1 for 72 hours. The nuclei are stained with DAPI (blue). The images are representative of results obtained in three different experiments. **C:** Expression of Slug and Snail in TGF- β 1-treated cells was controlled by RT-PCR for the indicated times after siRNA transfection. **D:** Quantification of RT-PCR data demonstrated that the decrease in E-cadherin expression is greater in HaCaT transfected with siRNA control than in HaCaT transfected with siRNA Slug or siRNA Snail. Results are representative of three independent transfection experiments performed in duplicates. The mean \pm SD is shown. **Asterisks** indicate statistically significant differences (* P < 0.05; *** P < 0.001). Original magnifications, \times 630.

has been shown to induce Snail and/or Slug transcription factors and to down-regulate E-cadherin in several cell lines.^{26-28,58,59}

To determine whether TGF- β 1 is responsible for the induction of Slug and Snail transcription factors and for the reduction of E-cadherin expression observed in EpM, we treated HaCaTs with TGF- β 1 and observed a down-regulation of E-cadherin expression with a high and low

induction of Slug and Snail transcription factors, respectively. Because similar results were obtained by RT-PCR and Western blot techniques, we concluded that TGF- β 1 induces an increased expression of Slug and Snail transcription factor and not an inhibition of protein degradation. However, compared with previous data obtained with other cell lines,^{26-28,58,59} TGF- β 1 differentially modified Slug and Snail expression in HaCaT keratinocytes.

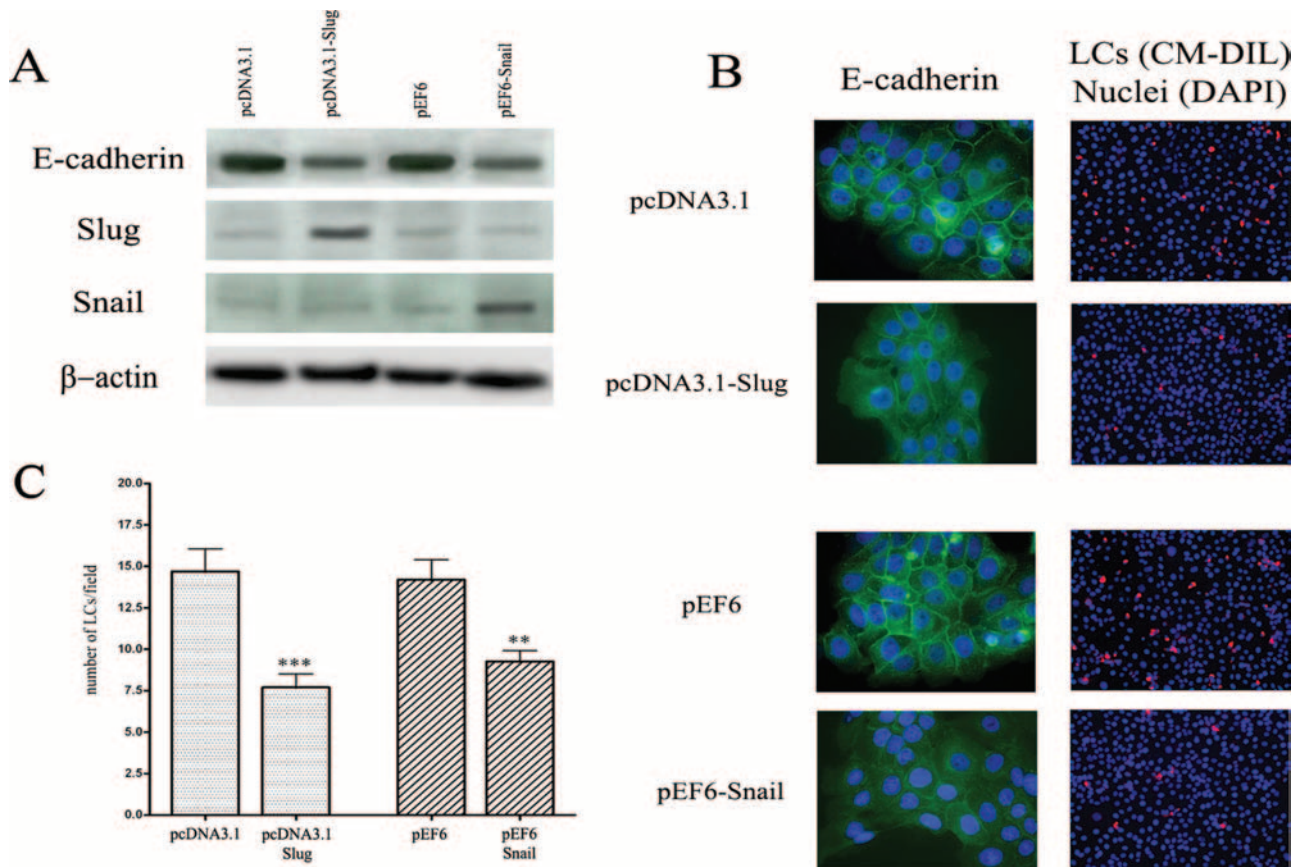


Figure 6. The decrease in E-cadherin expression induced by Slug and Snail transcription factors affects the interactions between LCs and keratinocytes. **A:** Seventy-two hours after transfection with Slug and Snail transcription factors, the expression of E-cadherin, Slug and Snail was assessed by Western blot. **B:** Immunofluorescence analysis and subcellular localization of E-cadherin (green) in human Slug or Snail transfected keratinocytes. Transfections with corresponding empty expression vectors were used as controls. For each condition of transfection, a representative example of LC (red) density observed by field in the heterotypic cell adhesion assay is shown. The nuclei are stained with DAPI (blue). **C:** Graphic representation of the mean number \pm SD of LCs observed by field in the co-culture experiments. For each condition, three independent experiments were performed. The adhesion of LCs to human Slug- or Snail-transfected keratinocytes was significantly lower compared to cells transfected with empty vectors. **Asterisks** indicate statistically significant differences (** $P < 0.01$; *** $P < 0.001$). Original magnifications: $\times 630$ (**B, left**); $\times 200$ (**B, right**), **C**.

Zavadil and colleagues³⁴ have previously shown that the patterns of activation of Slug and Snail by TGF- β 1 were mutually exclusive and cell-type-dependent. Moreover, the difference in Snail expression observed *in vivo* (strong) and *in vitro* (low) is probably related to the fact that TGF- β 1 is not the only soluble factor that can induce Snail expression. For example, the prostaglandin E₂ (PGE₂) can also up-regulate Snail⁶⁰ and then could explain the high expression of Snail observed *in vivo*. Accordingly, PGE₂ synthase was found to be highly expressed in mature and immature EpM compared to exocervical epithelium and a significantly increased Snail expression was observed *in vitro* in keratinocytes treated with PGE₂ (data not shown).

In addition, we showed that Slug or Snail silencing partially abrogated the down-regulation of E-cadherin induced by TGF- β 1 in keratinocytes. These results are in agreement with those reported by Takano and colleagues⁵⁸ and demonstrate that these transcription factors are implicated in the reduction of E-cadherin expression caused by TGF- β 1. However, the restitution of E-cadherin expression was stronger for Slug as compared to Snail silencing, suggesting that TGF- β 1 reduces

the E-cadherin expression in keratinocytes, mainly via the Slug transcription factor.

Finally, to determine the significance of this down-regulation of E-cadherin expression observed in EpM in terms of LC adhesion to keratinocytes, the impact of E-cadherin under-expression was studied by using a relevant heterotypic cell adhesion assay. We showed that the adhesion between LCs and epithelial cells is altered when E-cadherin expression by keratinocytes is inhibited. The importance of homophilic E-cadherin-mediated interactions between LCs and epithelial cells has been previously reported by several studies.^{11,36} However, the reduction of E-cadherin was unable to completely abrogate the LCs/keratinocytes interactions. Although there is evidence that E-cadherin stimulates the adhesion of LCs/DCs directly, we cannot exclude, in our study, the role of other adhesion molecules such as α 6 integrins, CD44, or CD47.⁶¹⁻⁶³

In conclusion, we demonstrated that TGF- β 1 can indirectly induce decreased antigen presentation functions in EpM by affecting E-cadherin expression. The inability of the local immune system to mount a cell-mediated immune response against pathogens or cells in transfor-

mation, because of a deficit of adhesion molecules necessary for cell-to-cell interactions, might play an important role in the susceptibility of EpM for developing cancer. The progressive alteration of E-cadherin expression that has been demonstrated in bronchial,¹⁵ esophageal,¹³ and gastric¹⁴ metaplasia-dysplasia-carcinoma sequences could not only be an early indication signaling the malignant transformation of metaplastic cells but might also constitute one of the major determinants for establishing local immunodeficiency responsible for EpM tumorigenesis.

References

- Slack JM: Metaplasia and transdifferentiation: from pure biology to the clinic. *Nat Rev Mol Cell Biol* 2007, 8:369–378
- Tosh D, Slack JM: How cells change their phenotype. *Nat Rev Mol Cell Biol* 2002, 3:187–194
- Elson DA, Riley RR, Lacey A, Thordarson G, Talamantes FJ, Arbeit JM: Sensitivity of the cervical transformation zone to estrogen-induced squamous carcinogenesis. *Cancer Res* 2000, 60:1267–1275
- Quinlan JM, Colleypriest BJ, Farrant M, Tosh D: Epithelial metaplasia and the development of cancer. *Biochim Biophys Acta* 2007, 1776:10–21
- Burghardt E, Ostor AG: Site and origin of squamous cervical cancer: a histomorphologic study. *Obstet Gynecol* 1983, 62:117–127
- Delvenne P, Hubert P, Jacobs N: Epithelial metaplasia: an inadequate environment for antitumour immunity? *Trends Immunol* 2004, 25:169–173
- Uchi H, Terao H, Koga T, Furue M: Cytokines and chemokines in the epidermis. *J Dermatol Sci* 2000, 24(Suppl 1):S29–S38
- Sikorski M, Bieda T, Bobek M, Zrubek H: Dynamics of cervical Langerhans cell counts in the course of HPV-positive CIN treatment with the use of human recombinant interferon gamma. *Eur J Gynaecol Oncol* 2005, 26:294–298
- Al-Saleh W, Giannini SL, Jacobs N, Moutschen M, Doyen J, Boniver J, Delvenne P: Correlation of T-helper secretory differentiation and types of antigen-presenting cells in squamous intraepithelial lesions of the uterine cervix. *J Pathol* 1998, 184:283–290
- Giannini SL, Hubert P, Doyen J, Boniver J, Delvenne P: Influence of the mucosal epithelium microenvironment on Langerhans cells: implications for the development of squamous intraepithelial lesions of the cervix. *Int J Cancer* 2002, 97:654–659
- Tang A, Amagai M, Granger LG, Stanley JR, Udey MC: Adhesion of epidermal Langerhans cells to keratinocytes mediated by E-cadherin. *Nature* 1993, 361:82–85
- Cepek KL, Shaw SK, Parker CM, Russell GJ, Morrow JS, Rimm DL, Brenner MB: Adhesion between epithelial cells and T lymphocytes mediated by E-cadherin and the alpha E beta 7 integrin. *Nature* 1994, 372:190–193
- Bailey T, Biddlestone L, Shepherd N, Barr H, Warner P, Jankowski J: Altered cadherin and catenin complexes in the Barrett's esophagus-dysplasia-adenocarcinoma sequence: correlation with disease progression and dedifferentiation. *Am J Pathol* 1998, 152:135–144
- Chan AO, Wong BC, Lan HY, Loke SL, Chan WK, Hui WM, Yuen YH, Ng I, Hou L, Wong WM, Yuen MF, Luk JM, Lam SK: Dereglulation of E-cadherin-catenin complex in precancerous lesions of gastric adenocarcinoma. *J Gastroenterol Hepatol* 2003, 18:534–539
- Kato Y, Hirano T, Yoshida K, Yashima K, Akimoto S, Tsuji K, Ohira T, Tsuboi M, Ikeda N, Ebihara Y, Kato H: Frequent loss of E-cadherin and/or catenins in intrabronchial lesions during carcinogenesis of the bronchial epithelium. *Lung Cancer* 2005, 48:323–330
- Graff JR, Herman JG, Lapidus RG, Chopra H, Xu R, Jarrard DF, Isaacs WB, Pitha PM, Davidson NE, Baylin SB: E-cadherin expression is silenced by DNA hypermethylation in human breast and prostate carcinomas. *Cancer Res* 1995, 55:5195–5199
- Yoshiura K, Kanai Y, Ochiai A, Shimoyama Y, Sugimura T, Hirohashi S: Silencing of the E-cadherin invasion-suppressor gene by CpG methylation in human carcinomas. *Proc Natl Acad Sci USA* 1995, 92:7416–7419
- Battle E, Sancho E, Franci C, Dominguez D, Monfar M, Baulida J, Garcia De HA: The transcription factor snail is a repressor of E-cadherin gene expression in epithelial tumour cells. *Nat Cell Biol* 2000, 2:84–89
- Bolós V, Peinado H, Perez-Moreno MA, Fraga MF, Esteller M, Cano A: The transcription factor Slug represses E-cadherin expression and induces epithelial to mesenchymal transitions: a comparison with Snail and E47 repressors. *J Cell Sci* 2003, 116:499–511
- Cano A, Perez-Moreno MA, Rodrigo I, Locascio A, Blanco MJ, del Barrio MG, Portillo F, Nieto MA: The transcription factor snail controls epithelial-mesenchymal transitions by repressing E-cadherin expression. *Nat Cell Biol* 2000, 2:76–83
- Hajra KM, Chen DY, Fearon ER: The SLUG zinc-finger protein represses E-cadherin in breast cancer. *Cancer Res* 2002, 62:1613–1618
- Miyoshi A, Kitajima Y, Sumi K, Sato K, Hagiwara A, Koga Y, Miyazaki K: Snail and SIP1 increase cancer invasion by upregulating MMP family in hepatocellular carcinoma cells. *Br J Cancer* 2004, 90:1265–1273
- Miyoshi A, Kitajima Y, Kido S, Shimonishi T, Matsuyama S, Kitahara K, Miyazaki K: Snail accelerates cancer invasion by upregulating MMP expression and is associated with poor prognosis of hepatocellular carcinoma. *Br J Cancer* 2005, 92:252–258
- Sugimachi K, Tanaka S, Kameyama T, Taguchi K, Aishima S, Shimada M, Sugimachi K, Tsuneyoshi M: Transcriptional repressor snail and progression of human hepatocellular carcinoma. *Clin Cancer Res* 2003, 9:2657–2664
- Hardy RG, Vicente-Duenas C, Gonzalez-Herrero I, Anderson C, Flores T, Hughes S, Tselepis C, Ross JA, Sanchez-Garcia I: Snail family transcription factors are implicated in thyroid carcinogenesis. *Am J Pathol* 2007, 171:1037–1046
- Choi J, Park SY, Joo CK: Transforming growth factor-beta1 represses E-cadherin production via slug expression in lens epithelial cells. *Invest Ophthalmol Vis Sci* 2007, 48:2708–2718
- Medici D, Hay ED, Goodenough DA: Cooperation between snail and LEF-1 transcription factors is essential for TGF-beta1-induced epithelial-mesenchymal transition. *Mol Biol Cell* 2006, 17:1871–1879
- Peinado H, Quintanilla M, Cano A: Transforming growth factor beta-1 induces snail transcription factor in epithelial cell lines: mechanisms for epithelial mesenchymal transitions. *J Biol Chem* 2003, 278:21113–21123
- Monteleone G, Pallone F, MacDonald TT: Smad7 in TGF-beta-mediated negative regulation of gut inflammation. *Trends Immunol* 2004, 25:513–517
- Siegel PM, Massague J: Cytostatic and apoptotic actions of TGF-beta in homeostasis and cancer. *Nat Rev Cancer* 2003, 3:807–821
- Delvenne P, Fontaine MA, Delvenne C, Nikkels A, Boniver J: Detection of human papillomaviruses in paraffin-embedded biopsies of cervical intraepithelial lesions: analysis by immunohistochemistry, in situ hybridization, and the polymerase chain reaction. *Mod Pathol* 1994, 7:113–119
- Qu W, Jiang G, Cruz Y, Chang CJ, Ho GY, Klein RS, Burk RD: PCR detection of human papillomavirus: comparison between MY09/MY11 and GP5+/GP6+ primer systems. *J Clin Microbiol* 1997, 35:1304–1310
- Snijders PJ, van den Brule AJ, Schrijnemakers HF, Snow G, Meijer CJ, Walboomers JM: The use of general primers in the polymerase chain reaction permits the detection of a broad spectrum of human papillomavirus genotypes. *J Gen Virol* 1990, 71:173–181
- Zavadil J, Cermak L, Soto-Nieves N, Bottlinger EP: Integration of TGF-beta/Smad and Jagged1/Notch signalling in epithelial-to-mesenchymal transition. *EMBO J* 2004, 23:1155–1165
- Detry C, Waltregny D, Quatresooz P, Chaplet M, Kedzia W, Castronovo V, Delvenne P, Bellahcene A: Detection of bone sialoprotein in human (pre)neoplastic lesions of the uterine cervix. *Calcif Tissue Int* 2003, 73:9–14
- Hubert P, Caberg JH, Gilles C, Bousarghin L, Franzen-Detrooz E, Boniver J, Delvenne P: E-cadherin-dependent adhesion of dendritic and Langerhans cells to keratinocytes is defective in cervical human papillomavirus-associated (pre)neoplastic lesions. *J Pathol* 2005, 206:346–355
- Delvenne P, Al-Saleh W, Gilles C, Thiry A, Boniver J: Inhibition of growth of normal and human papillomavirus-transformed keratino-

- cytes in monolayer and organotypic cultures by interferon-gamma and tumor necrosis factor-alpha. *Am J Pathol* 1995, 146:589-598
38. Jordà M, Olmeda D, Vinyals A, Valero E, Cubillo E, Llorens A, Cano A, Fabra A: Upregulation of MMP-9 in MDCK epithelial cell line in response to expression of the Snail transcription factor. *J Cell Sci* 2005, 118:3371-3385
 39. Tripathi MK, Misra S, Khedkar SV, Hamilton N, Irvin-Wilson C, Sharan C, Sealy L, Chaudhuri G: Regulation of BRCA2 gene expression by the SLUG repressor protein in human breast cells. *J Biol Chem* 2005, 280:17163-17171
 40. Hubert P, Bousarghin L, Greimers R, Franzen-Detrooz E, Boniver J, Delvenne P: Production of large numbers of Langerhans' cells with intraepithelial migration ability in vitro. *Exp Dermatol* 2005, 14:469-477
 41. Cossentino MJ, Wong RK: Barrett's esophagus and risk of esophageal adenocarcinoma. *Semin Gastrointest Dis* 2003, 14:128-135
 42. Whiting JL, Sigurdsson A, Rowlands DC, Hallissey MT, Fielding JW: The long term results of endoscopic surveillance of premalignant gastric lesions. *Gut* 2002, 50:378-381
 43. Wild CP, Hardie LJ: Reflux. Barrett's oesophagus and adenocarcinoma: burning questions. *Nat Rev Cancer* 2003, 3:676-684
 44. Giannini SL, Al-Saleh W, Piron H, Jacobs N, Doyen J, Boniver J, Delvenne P: Cytokine expression in squamous intraepithelial lesions of the uterine cervix: implications for the generation of local immunosuppression. *Clin Exp Immunol* 1998, 113:183-189
 45. Tselepis C, Perry I, Dawson C, Hardy R, Darnton SJ, McConkey C, Stuart RC, Wright N, Harrison R, Jankowski JA: Tumour necrosis factor-alpha in Barrett's oesophagus: a potential novel mechanism of action. *Oncogene* 2002, 21:6071-6081
 46. Swami S, Kumble S, Triadafilopoulos G: E-cadherin expression in gastroesophageal reflux disease. Barrett's esophagus, and esophageal adenocarcinoma: an immunohistochemical and immunoblot study. *Am J Gastroenterol* 1995, 90:1808-1813
 47. Barnetson RS, Satchell A, Zhuang L, Slade HB, Halliday GM: Imiquimod induced regression of clinically diagnosed superficial basal cell carcinoma is associated with early infiltration by CD4 T cells and dendritic cells. *Clin Exp Dermatol* 2004, 29:639-643
 48. Inoshima N, Nakanishi Y, Mihami T, Izumi M, Takayama K, Yoshino I, Hara N: The influence of dendritic cell infiltration and vascular endothelial growth factor expression on the prognosis of non-small cell lung cancer. *Clin Cancer Res* 2002, 8:3480-3486
 49. Reichert TE, Scheuer C, Day R, Wagner W, Whiteside TL: The number of intratumoral dendritic cells and zeta-chain expression in T cells as prognostic and survival biomarkers in patients with oral carcinoma. *Cancer* 2001, 91:2136-2147
 50. Matthews K, Leong CM, Baxter L, Inglis E, Yun K, Backstrom BT, Doorbar J, Hibma M: Depletion of Langerhans cells in human papillomavirus type 16-infected skin is associated with E6-mediated down regulation of E-cadherin. *J Virol* 2003, 77:8378-8385
 51. Böhmer G, van den Brule AJ, Brummer O, Meijer CL, Petry KU: No confirmed case of human papillomavirus DNA-negative cervical intraepithelial neoplasia grade 3 or invasive primary cancer of the uterine cervix among 511 patients. *Am J Obstet Gynecol* 2003, 189:118-120
 52. Bosch FX, Munoz N: The viral etiology of cervical cancer. *Virus Res* 2002, 89:183-190
 53. Walboomers JM, Jacobs MV, Manos MM, Bosch FX, Kummer JA, Shah KV, Snijders PJ, Peto J, Meijer CJ, Munoz N: Human papillomavirus is a necessary cause of invasive cervical cancer worldwide. *J Pathol* 1999, 189:12-19
 54. Eads CA, Lord RV, Wickramasinghe K, Long TI, Kurumboor SK, Bernstein L, Peters JH, DeMeester SR, Demeester TR, Skinner KA, Laird PW: Epigenetic patterns in the progression of esophageal adenocarcinoma. *Cancer Res* 2001, 61:3410-3418
 55. To KF, Leung WK, Lee TL, Yu J, Tong JH, Chan MW, Ng EK, Chung SC, Sung JJ: Promoter hypermethylation of tumor-related genes in gastric intestinal metaplasia of patients with and without gastric cancer. *Int J Cancer* 2002, 102:623-628
 56. Hotz B, Arndt M, Dullat S, Bhargava S, Buhr HJ, Hotz HG: Epithelial to mesenchymal transition: expression of the regulators snail, slug, and twist in pancreatic cancer. *Clin Cancer Res* 2007, 13:4769-4776
 57. Uchikado Y, Natsugoe S, Okumura H, Setoyama T, Matsumoto M, Ishigami S, Aikou T: Slug expression in the E-cadherin preserved tumors is related to prognosis in patients with esophageal squamous cell carcinoma. *Clin Cancer Res* 2005, 11:1174-1180
 58. Takano S, Kanai F, Jazag A, Ijichi H, Yao J, Ogawa H, Enomoto N, Omata M, Nakao A: Smad4 is essential for down-regulation of E-cadherin induced by TGF-beta in pancreatic cancer cell line PANC-1. *J Biochem (Tokyo)* 2007, 141:345-351
 59. Thiault S, Valcourt U, Petersen M, Manfioletti G, Heldin CH, Moustakas A: Transforming growth factor-beta employs HMG2 to elicit epithelial-mesenchymal transition. *J Cell Biol* 2006, 174:175-183
 60. Dohadwala M, Yang SC, Luo J, Sharma S, Batra RK, Huang M, Lin Y, Goodlick L, Krysan K, Fishbein MC, Hong L, Lai C, Cameron RB, Gemmill RM, Drabkin HA, Dubinett SM: Cyclooxygenase-2-dependent regulation of E-cadherin: prostaglandin E(2) induces transcriptional repressors ZEB1 and snail in non-small cell lung cancer. *Cancer Res* 2006, 66:5338-5345
 61. Fukunaga A, Nagai H, Noguchi T, Okazawa H, Matozaki T, Yu X, Lagenaur CF, Honma N, Ichihashi M, Kasuga M, Nishigori C, Horikawa T: Src homology 2 domain-containing protein tyrosine phosphatase substrate 1 regulates the migration of Langerhans cells from the epidermis to draining lymph nodes. *J Immunol* 2004, 172:4091-4099
 62. Price AA, Cumberbatch M, Kimber I, Ager A: Alpha 6 integrins are required for Langerhans cell migration from the epidermis. *J Exp Med* 1997, 186:1725-1735
 63. Staquet MJ: Adhesion and migration of epidermal dendritic cells. *Pathol Biol (Paris)* 1995, 43:858-862

AUTHOR QUERIES

AUTHOR PLEASE ANSWER ALL QUERIES

1

A—Short running head okay? If not, please provide a new one of 40 characters or less.

B—Au/ Genus, loci, alleles, and genotypes are styled as italic; proteins, gene products, phenotypes, mRNAs, and cDNAs are not. Please confirm or correct throughout. Please make sure that all products/supplies have their manufacturers, cities, and states or countries cited at the first mention. Per journal style, most nonstandard abbreviations must be used at least three times in the abstract and five times in the text to be retained; nonstandard abbreviations used fewer times have thus been written out.

C—Please write out CRCE and CRLC in the affiliation line. Also, is the line okay as set?
